

Cisco C1200-48T-4X

Cisco Catalyst 1200-48T-4X Smart Switch User Manual

Model: C1200-48T-4X

PRODUCT OVERVIEW

The Cisco Catalyst 1200-48T-4X Smart Switch is designed to provide robust network performance, security, and reliability for small to medium-sized businesses. This switch features 48 Gigabit Ethernet ports and 4x10GE SFP+ uplinks, offering flexible connectivity options.

Key features include:

- 48 ports 10/100/1000 + 4x 10GE SFP+ for high-speed connectivity.
- Intuitive management via the Cisco Business mobile app and local web interface.
- Integrated IEEE 802.1X port security, Denial-of-Service (DoS) attack prevention, and Access Control Lists (ACLs).
- Energy-efficient design compliant with IEEE 802.3az.
- Limited lifetime hardware warranty with complimentary 1-year technical support.



Image: Various models of the Cisco Catalyst 1200 Series Smart Switches, showcasing different port configurations.

Cisco Catalyst Series Introduction

Your browser does not support the video tag.

Video: An introductory overview of the Cisco Catalyst 1200 and 1300 Series Switches, highlighting seamless connectivity and simple management across different business environments.

SETUP AND INSTALLATION

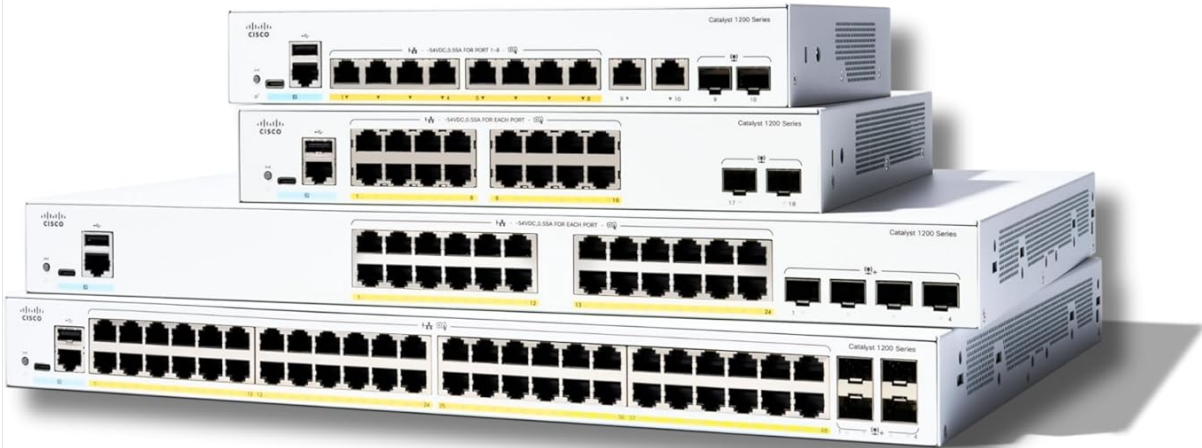
Unboxing the Switch

Before beginning installation, ensure all components are present. The package typically includes:

- Cisco Catalyst 1200-48T-4X Smart Switch
- Power cord or adapter
- USB Type C cable

- Mounting hardware

Cisco Catalyst 1200 Series Smart Switches



- 8, 16, 24 and 48 Gigabit network ports, 1G or 10G fiber uplinks
- PoE+ support upto 375W
- Mobile App and Cisco Business Dashboard support
- Built-in security
- No subscription or licenses



Image: Front view of the Cisco Catalyst 1200-48T-4X Smart Switch, showing the 48 Gigabit Ethernet ports and 4 SFP+ uplink ports.

Cisco Catalyst 1200 Series Switches Unboxing Video

Your browser does not support the video tag.

Video: A detailed unboxing and initial setup guide for the Cisco Catalyst 1200 Series Switches, demonstrating how to connect the switch to power and a router, and how to use the mobile app for configuration.

Initial Connections

1. **Power Connection:** Connect the provided power cord or adapter to the switch and a power outlet.
2. **Router Connection:** Connect an Ethernet cable from your router's LAN port to any of the Gigabit Ethernet ports on the switch.
3. **Device Connections:** Connect your network devices (computers, servers, access points) to the remaining Gigabit Ethernet ports on the switch.

Mobile App Setup

The Cisco Business mobile app simplifies setup and management:

1. **Download the App:** Download the Cisco Business mobile app from your device's app store (available for Android and iOS).
2. **Create a Site:** Launch the app and create a new site, providing your site's name and address.

3. **Configure Credentials:** Answer a few questions to configure site credentials (username and password).
4. **Add Devices:** Follow the in-app instructions to add your wired and wireless devices to the network.



Image: A person interacting with the Cisco Business mobile app on a smartphone, demonstrating the ease of network management.

OPERATING THE SWITCH

The Cisco Catalyst 1200-48T-4X Smart Switch offers flexible management options to monitor and configure your network.

Cisco Business Mobile App

The mobile app allows you to monitor your network from anywhere. It provides real-time device status, allows you to perform actions like rebooting devices or upgrading firmware, and gives insights into connected clients and network usage.

Web User Interface (UI) and Cisco Business Dashboard

For advanced configuration and comprehensive network management, utilize the local web UI or the Cisco Business Dashboard. These tools provide detailed settings for VLANs, QoS, security, and other network parameters.



Image: Two individuals reviewing network data on a computer screen, illustrating collaborative use of the Cisco Business Dashboard for network management.

MAINTENANCE AND SECURITY

Maintaining your switch ensures optimal performance and network security.

Energy Efficiency

The switch is designed with energy-efficient features, compliant with IEEE 802.3az Energy Efficient Ethernet, to help reduce operational costs. Ensure proper ventilation to maintain efficient cooling.

Network Security

The Cisco Catalyst 1200-48T-4X includes robust security features:

- **IEEE 802.1X Port Security:** Controls access to your network by authenticating devices connected to switch ports.
- **Denial-of-Service (DoS) Attack Prevention:** Increases network uptime by protecting against common DoS

attacks.

- **Access Control Lists (ACLs):** Protects the network from unauthorized users and traffic by filtering packets based on defined rules.

Regularly review and update your security configurations to protect your network from evolving threats.

TROUBLESHOOTING

If you encounter issues with your Cisco Catalyst 1200-48T-4X Smart Switch, consider the following basic troubleshooting steps:

- **Check Physical Connections:** Ensure all power and Ethernet cables are securely connected.
- **Power Cycle:** Disconnect the power, wait 10 seconds, and then reconnect the power to restart the switch.
- **Verify LED Indicators:** Consult the Quick Start Guide or the Documentation Portal (accessible via QR code on the product packaging) to understand the meaning of LED indicators, which can help diagnose connection or operational issues.
- **Review Configuration:** Use the Cisco Business mobile app or the web UI to check your network configuration settings.
- **Consult Documentation:** Refer to the comprehensive documentation available on the Cisco website for detailed troubleshooting guides.

SPECIFICATIONS

| Attribute | Value |
|----------------------------|--|
| Model Number | C1200-48T-4X |
| Number of Ports | 48 |
| Interface Type | SFP+ |
| Data Transfer Rate | 1000 Megabits Per Second |
| Voltage | 13.6 Volts (AC) |
| Item Weight | 9.83 pounds (4.47 Kilograms) |
| Product Dimensions (LxWxH) | 17.5 x 11.34 x 1.73 inches |
| Included Components | Switch, power cord or adapter, USB Type C cable, and mounting hardware |
| Manufacturer | Cisco |
| UPC | 889728521772 |

WARRANTY AND SUPPORT

Cisco provides comprehensive support for the Catalyst 1200-48T-4X Smart Switch.

- **Limited Lifetime Hardware Warranty:** The product is covered by a limited lifetime hardware warranty.
- **Complimentary Technical Support:** Enjoy one year of complimentary technical support to assist with any operational queries or issues.

For further assistance, please refer to the official Cisco support channels or the Cisco Business mobile app.

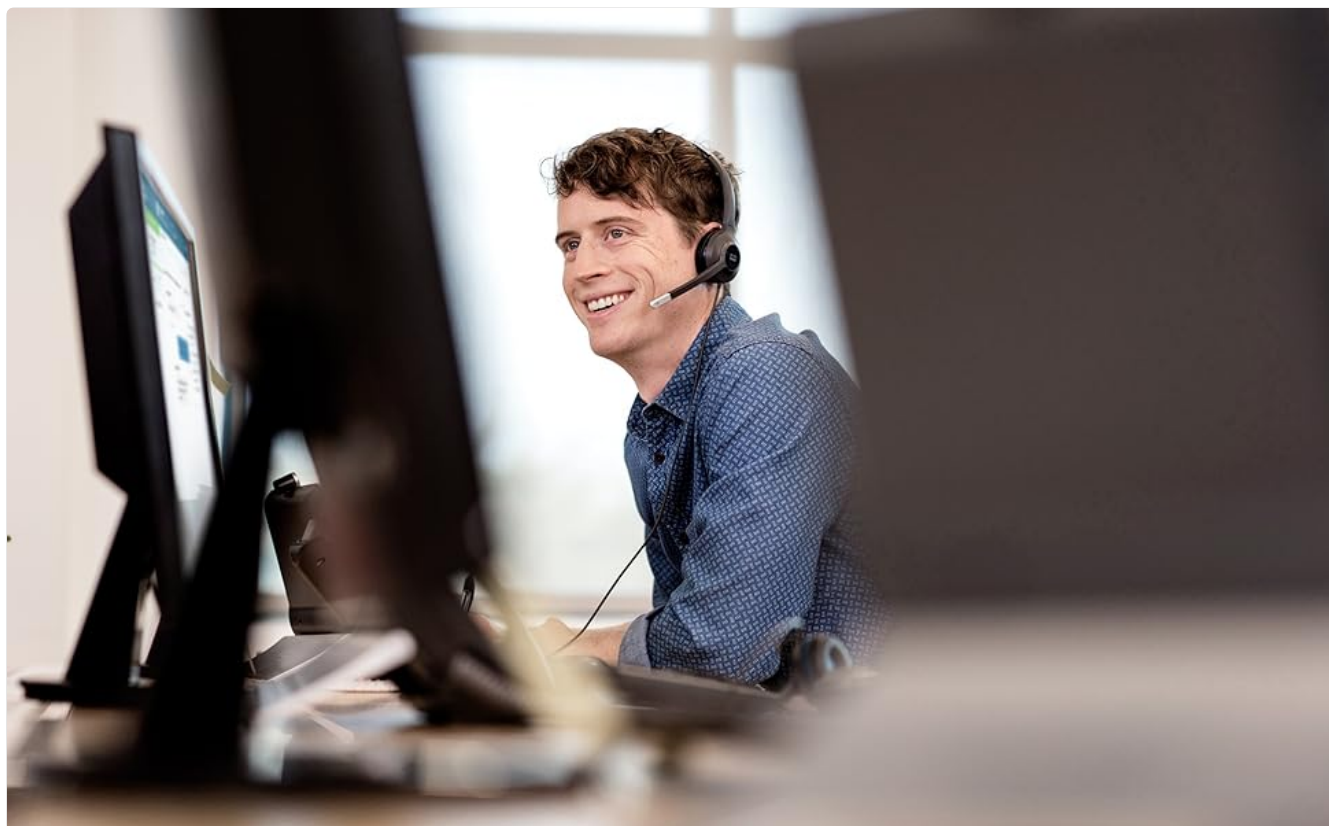


Image: A Cisco support professional wearing a headset, smiling while working at a computer, symbolizing available technical assistance.