

Cisco C1300-48P-4X

Cisco Catalyst 1300-48P-4X Managed Switch User Manual

Model: C1300-48P-4X

1. INTRODUCTION AND OVERVIEW

The Cisco Catalyst 1300-48P-4X Managed Switch is engineered to provide reliable and secure network connectivity for small to medium-sized businesses. This switch offers full Layer 2/3 capabilities, an intuitive web dashboard, advanced networking features, and Power over Ethernet Plus (PoE+) support, facilitating digital transformation within your network infrastructure.

Key features of the Cisco Catalyst 1300-48P-4X include:

- **Switch Ports:** 48 ports 10/100/1000 Gigabit Ethernet with PoE+, plus 4x 10GE SFP+ uplinks. Total PoE power budget: 375W.
- **Simplified Management:** Intuitive Cisco Business mobile app, local web interface, and Cisco Business Dashboard for easy setup, management, and monitoring.
- **Enhanced Security:** Features like IP-MAC port binding to detect and block network attacks, and IPv6 First Hop Security for protection against address spoofing and man-in-the-middle attacks.
- **Energy Efficiency:** Optimizes power usage in compliance with IEEE 802.3az Energy Efficient Ethernet to reduce operational costs.
- **Business Ready:** No subscription or licenses required, includes a limited lifetime hardware warranty and complimentary 1-year technical support.



Image: A stack of Cisco Catalyst 1300 Series Managed Switches, illustrating various port configurations available in the series.

Video: An introductory overview of the Cisco Catalyst series, highlighting its benefits for business connectivity and management. This video provides a general introduction to the product line.

2. WHAT'S IN THE BOX

Upon opening the packaging for your Cisco Catalyst 1300-48P-4X Managed Switch, you should find the following components:

- Cisco Catalyst 1300-48P-4X Managed Switch unit
- Power cord or adapter
- USB Type-C cable
- Mounting hardware (for rack or wall mounting)

Video: An unboxing demonstration of the Cisco Catalyst 1300 series switch, showing the contents of the product package and initial setup steps.

3. SETUP AND INSTALLATION

Follow these steps to set up your Cisco Catalyst 1300-48P-4X Managed Switch:

1. **Unpack the Switch:** Carefully remove the switch and all accessories from the packaging. Inspect for any damage.
2. **Choose a Location:** Select a suitable location for the switch, ensuring adequate ventilation and access to power and network cables. The switch can be placed on a desktop, mounted on a wall, or installed in a rack using the provided hardware.
3. **Connect Power:** Connect the power cord or adapter to the switch's power input and then to a power outlet.
4. **Connect to Network:** Connect an Ethernet cable from your router or existing network to one of the

Gigabit Ethernet ports on the switch.

5. **Connect Devices:** Connect your network devices (computers, access points, IP cameras, etc.) to the remaining Gigabit Ethernet ports. For devices requiring power, utilize the PoE+ enabled ports.
6. **Initial Configuration (Mobile App):**
 - Download the Cisco Business mobile app from your device's app store.
 - Launch the app and follow the on-screen instructions to discover and configure your switch. This typically involves creating a site and setting up basic network parameters.
7. **Initial Configuration (Web Interface):** Alternatively, you can access the switch's web-based management interface by connecting a computer directly to the switch and navigating to its default IP address in a web browser. Refer to the Quick Start Guide for the default IP address and login credentials.

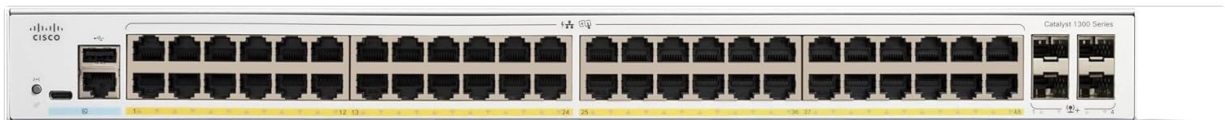
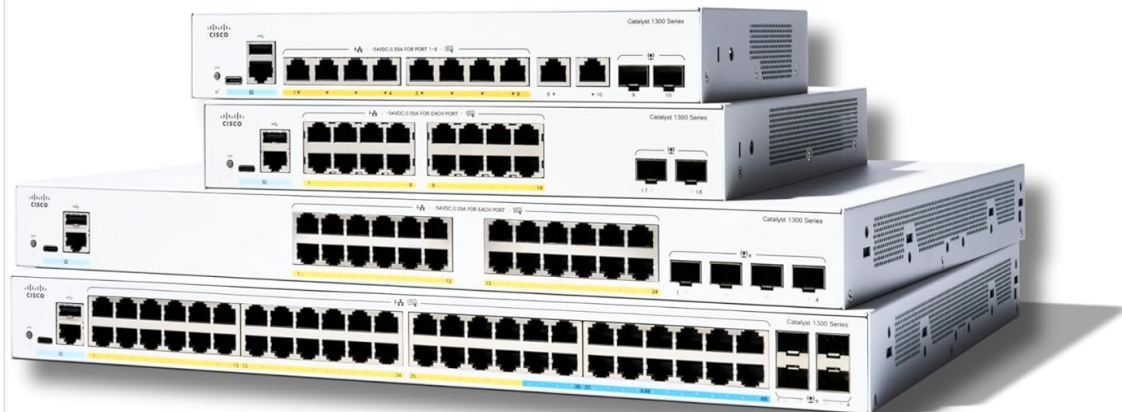


Image: Front view of the Cisco Catalyst 1300-48P-4X Managed Switch, showing the 48 Gigabit Ethernet ports and status indicators.

Cisco Catalyst 1300 Series Managed Switches



- 8, 16, 24 and 48 Gigabit/ Multi-Gigabit port options, 1G or 10G fiber uplinks
- PoE+ support upto 740W
- Mobile App and Cisco Business Dashboard support
- Advanced threat protection with IPv6 first hop security
- No subscription or licenses



Image: Rear view of the Cisco Catalyst 1300-48P-4X Managed Switch, highlighting the power input and 4x 10GE SFP+ uplink ports.

4. OPERATING INSTRUCTIONS

Once your Cisco Catalyst 1300-48P-4X switch is set up, you can manage and monitor your network using the following methods:

4.1. Cisco Business Mobile App

The mobile app provides a convenient way to monitor your network status, connected clients, and device performance from your smartphone or tablet. It allows for quick adjustments and troubleshooting without needing to access a computer.

4.2. Web-Based User Interface (UI)

For more advanced configuration and detailed network management, access the switch's web UI. This interface offers comprehensive control over Layer 2/3 features, VLANs, QoS settings, security policies, and more. Refer to the product documentation for detailed instructions on using the web UI.

4.3. Cisco Business Dashboard

The Cisco Business Dashboard is a centralized management platform for multiple Cisco Business devices. It provides a unified view of your network, simplifying management across various switches, routers, and access points. This tool is ideal for managing larger or distributed small business networks.

Video: This video highlights the value proposition of Cisco Catalyst 1200 and 1300 Series Switches, focusing on their ease of use, management capabilities, and performance benefits for small businesses.

5. MAINTENANCE

Regular maintenance ensures optimal performance and longevity of your Cisco Catalyst 1300-48P-4X switch:

- **Firmware Updates:** Periodically check for and install the latest firmware updates from the Cisco website. Firmware updates often include security patches, bug fixes, and new features.
- **Physical Inspection:** Regularly inspect the switch for dust accumulation, especially around ventilation openings. Ensure all cable connections are secure.
- **Cleaning:** Use a soft, dry cloth to clean the exterior of the switch. Avoid using liquid cleaners or solvents. Ensure ventilation openings are clear of obstructions.
- **Environmental Conditions:** Ensure the switch operates within its specified temperature and humidity ranges to prevent overheating and component failure.

6. TROUBLESHOOTING

If you encounter issues with your Cisco Catalyst 1300-48P-4X switch, consider the following troubleshooting steps:

- **No Power:** Verify the power cord is securely connected to both the switch and the power outlet. Check if the power outlet is functional.
- **No Connectivity:**
 - Check the Ethernet cables for secure connections and damage.
 - Verify the status indicator lights on the switch ports. A solid green light typically indicates a good connection.
 - Ensure your connected devices are properly configured and functioning.
- **Slow Network Performance:**
 - Check for excessive network traffic or bandwidth-intensive applications.
 - Ensure your network cables are of appropriate quality (e.g., Cat5e or Cat6 for Gigabit speeds).
 - Review QoS settings in the switch's management interface to prioritize critical traffic.

- **Accessing Web UI/Mobile App:** Ensure your device is on the same network segment as the switch. Verify the switch's IP address and your login credentials.
- **Factory Reset:** As a last resort, if configuration issues persist, you can perform a factory reset. Refer to the Quick Start Guide or product documentation for instructions on how to perform a factory reset. Note that this will erase all custom configurations.

7. SPECIFICATIONS

Attribute	Value
Model Number	C1300-48P-4X
Number of Ports	48 Gigabit Ethernet + 4x 10GE SFP+
Interface Type	PoE, SFP+
Maximum Power (PoE Budget)	375 Watts
Data Transfer Rate	88 Gigabits Per Second
Voltage	44 Volts (DC)
Item Weight	12.56 pounds (5.71 Kilograms)
Product Dimensions	17.5 x 13.78 x 1.73 inches
Color	White
UPC	889728521994
Manufacturer	Cisco



Image: A comparison table detailing features of Cisco Catalyst 1200 Series Smart Switches and 1300 Series Managed Switches.

8. WARRANTY AND SUPPORT

The Cisco Catalyst 1300-48P-4X Managed Switch comes with a comprehensive warranty and support package:

- **Limited Lifetime Hardware Warranty:** This warranty covers defects in materials and workmanship for the lifetime of the product.
- **Complimentary 1-Year Technical Support:** Enjoy one year of technical support to assist with any setup, configuration, or troubleshooting needs.

For detailed warranty information, technical support, and additional resources, please visit the official Cisco support website or refer to the documentation included with your product.

Cisco Support Website: cisco.com/go/c1300