

Manuals.plus /

› Yolansin /

› Yolansin 4K30FPS Dual Screen Action Camera, Model 26-C User Manual

Yolansin 26-C

Yolansin 4K30FPS Dual Screen Action Camera User Manual

Model: 26-C

1. INTRODUCTION

This manual provides detailed instructions for the proper use and maintenance of your Yolansin 4K30FPS Dual Screen Action Camera, Model 26-C. Please read this manual thoroughly before operating the camera to ensure optimal performance and longevity.



Image: The Yolansin 4K30FPS Dual Screen Action Camera, showcasing its dual screens and various accessories.

2. PACKAGE CONTENTS

Verify that all items listed below are included in your package:

- Yolansin 4K30FPS Dual Screen Action Camera
- Waterproof Case
- 2 x 1050mAh Lithium Ion Batteries
- Battery Charger
- 32GB Micro SD Card

- 2.4G Remote Control
- External Microphone
- USB Cable
- Various Mounting Accessories and Tethers
- User Manual
- Warranty Card



Image: A comprehensive display of all accessories included with the camera, such as batteries, charger, waterproof case, remote control, and various mounts.

3. CAMERA OVERVIEW

The Yolansin 4K30FPS Dual Screen Action Camera features a 1.4-inch front display and a 2-inch rear touchscreen. It is designed for capturing high-quality video and photos in various environments, including underwater with the provided waterproof case.

Dual Color Screen Waterproof Action Camera



Image: The Yolansin Action Camera displaying its dual screens and icons representing features like 2.0-inch EIS, Dual Screen, 170° Wide-Angle, 131FT Waterproof, 2.4G WiFi, External Mic, and Remote Control.

4. SETUP

4.1 Battery Installation

1. Locate the battery compartment on the bottom of the camera.
2. Open the battery compartment cover.
3. Insert a fully charged battery, ensuring correct polarity.
4. Close the battery compartment cover securely.

4.2 Micro SD Card Installation

A 32GB Micro SD card is included. Ensure the card is Class 10 or U1 for optimal performance.

1. Locate the Micro SD card slot on the side of the camera.
2. Insert the Micro SD card with the gold contacts facing the front of the camera until it clicks into place.
3. To remove, gently push the card until it springs out.

4.3 Waterproof Case Usage

The camera itself is not waterproof. Use the included waterproof case for underwater activities up to 131

feet (40 meters).

1. Ensure the camera is dry before placing it into the waterproof case.
2. Close the case securely, ensuring the rubber seal is clean and properly seated.
3. Before first use, test the waterproof case without the camera inside by submerging it in water to check for leaks.



Image: The Yolansin Action Camera securely enclosed within its transparent waterproof housing.

4.4 Mounting Accessories

Utilize the various included mounts to attach your camera to helmets, bicycles, or other surfaces. Refer to the 'Accessories Installation Guide' for specific mounting instructions.

5. OPERATING INSTRUCTIONS

5.1 Power On/Off

- To power on: Press and hold the Power button until the screen illuminates.
- To power off: Press and hold the Power button until the screen turns off.

5.2 Mode Switching

Press the Mode button to cycle through different modes such as Video, Photo, Playback, and Settings.

5.3 Recording Video

1. Select Video mode.
2. Press the Shutter/OK button to start recording. A red indicator light will flash.
3. Press the Shutter/OK button again to stop recording. The indicator light will stop flashing.

5.4 Taking Photos

1. Select Photo mode.
2. Press the Shutter/OK button to take a photo.

5.5 Pre-recording Function

The pre-recording function captures video before you press the record button, ensuring you don't miss critical moments. Activate this feature in the camera's settings menu.

NEW Supports the Pre-recording

Missing the highlight? Didn't get the shot you wanted?
Pre-recording allows you to travel back in time



Image: A sequence demonstrating the pre-recording feature, showing frames captured before and during a watersports activity.

5.6 Electronic Image Stabilization (EIS)

Enable EIS in the settings to reduce camera shake and produce smoother footage, especially during active sports. The camera features a built-in 3-axis stabilization gyro.

Enhanced Image Stabilization

EIS ON



EIS ON



Image: A visual comparison showing the difference in stability between footage captured with Electronic Image Stabilization (EIS) enabled and disabled.

5.7 Screen Switching (Front/Rear)

To switch between the front (1.4-inch) and rear (2-inch touchscreen) displays, press and hold the 'Up' button on the side of the camera.

COLOR FRONT SCREEN + 2" TOUCH SCREEN



Image: The Yolansin Action Camera highlighting its color front screen and 2-inch touchscreen, demonstrating their use in different scenarios.

5.8 Wide Angle Adjustment

The camera supports wide, medium, and narrow angle adjustments. This setting can be changed in the camera's menu to suit your shooting preference. The maximum wide angle is 170 degrees.

5.9 Connecting to Wi-Fi (FUN DV App)

Control your camera remotely and share content using the FUN DV app.

1. **Download App:** Download the 'FUN DV' app from the Google Play Store or Apple App Store, or scan the QR code on the product packaging. You can also visit yolansin.com/download/fundv.
2. **Activate Wi-Fi:** Turn on the camera. In video mode, press the 'Up' button briefly to activate Wi-Fi. The Wi-Fi SSID and password will display on the screen. Press the 'Up' button again to turn off Wi-Fi.
3. **Connect Phone:** On your smartphone, go to Wi-Fi settings and connect to the camera's Wi-Fi network using the displayed SSID and password.
4. **Launch App:** Open the FUN DV app and tap 'Connect the camera' to establish the connection.



Image: A person holding a smartphone displaying images and videos captured by the action camera, illustrating the Wi-Fi and app control feature for sharing adventures.



Image: A QR code on the product packaging, which can be scanned to download the FUN DV application for smartphone connectivity.

5.10 Using the Remote Control

The 2.4G remote control allows you to operate the camera from up to 10 meters away. It is not waterproof.



Image: The Yolansin Action Camera positioned next to its compact 2.4G remote control, used for wireless operation.

5.11 External Microphone Usage

Connect the included external microphone to improve audio quality. Note that the external microphone cannot be used simultaneously with the waterproof case due to the case's sealed design.



Image: The Yolansin Action Camera with an external microphone plugged into its port, indicating enhanced audio recording capability.

5.12 Other Functions

The camera offers various other functions accessible through the settings menu:

- **Loop Recording:** Records video continuously, overwriting the oldest files when the memory card is full.
- **Time-lapse:** Captures a series of photos at set intervals to create a time-lapse video.
- **Driving Mode:** Functions as a dashcam, automatically starting recording when power is supplied.

- **Image Flipping:** Rotates the image 180 degrees, useful for inverted mounting.
- **Exposure Adjustment:** Manually adjust exposure compensation.
- **White Balance Adjustment:** Adjust white balance settings for accurate color reproduction in different lighting conditions.
- **Slow Motion:** Records video at a higher frame rate for slow-motion playback.
- **Timer:** Sets a delay before taking a photo.
- **Burst Shooting:** Takes multiple photos in quick succession.

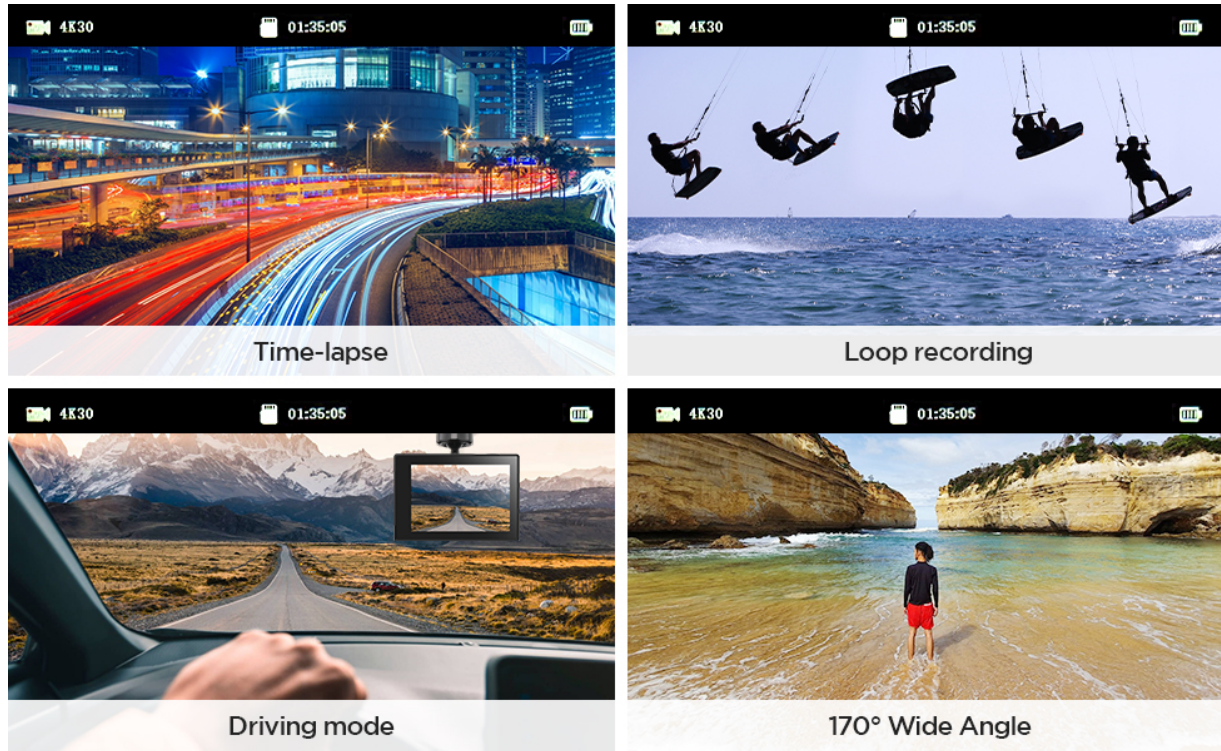


Image: A collage illustrating different operational modes of the camera, such as Time-lapse, Loop recording, Driving mode, and 170° Wide Angle.

5.13 Landscape & Portrait Switch

The camera supports switching between landscape and portrait shooting orientations, allowing for versatile content creation.

Landscape & Portrait Switch

9:16 ▾



16:9 ▲



Image: The Yolansin Action Camera shown capturing scenes in both landscape (16:9) and portrait (9:16) orientations.

6. MAINTENANCE

6.1 Cleaning

- Use a soft, lint-free cloth to clean the camera body and screens.
- For lenses, use a specialized lens cleaning cloth and solution.
- Ensure the waterproof case's seal is free of debris before and after use.

6.2 Storage

- Store the camera in a cool, dry place away from direct sunlight.
- Remove batteries if storing for extended periods.

7. TROUBLESHOOTING

- **Camera not turning on:** Ensure batteries are fully charged and correctly inserted.
- **Recording stops unexpectedly:** Check if the Micro SD card is full or corrupted. Format the card if necessary. Ensure the card is Class 10 or U1.
- **Wi-Fi connection issues:** Verify Wi-Fi is enabled on the camera and your smartphone. Ensure you are within the 2.4G Wi-Fi range. Restart both devices if necessary.

- **Poor audio quality:** Ensure the external microphone is properly connected. If using the internal microphone, ensure it is not obstructed.
- **Water leakage in waterproof case:** Immediately remove the camera. Inspect the rubber seal for damage or debris. Ensure the case is properly closed.

8. SPECIFICATIONS

Feature	Specification
Video Resolution	4K/30fps, 2.7K/30fps, 1080P/60fps
Image Resolution	20MP
Display	1.4" Front Screen, 2" Rear Touch Screen
Waterproof Depth	131ft / 40m (with waterproof case)
Wi-Fi	2.4G
Wide Angle	170°
Image Stabilization	EIS (Electronic Image Stabilization) with 3-axis gyro
External Microphone	Supported (included)
Storage	Micro SD Class10 / U1 (32GB card included)
Batteries	2 x 1050mAh Lithium Ion
Remote Control Range	Up to 10 meters (not waterproof)
Connectivity	Micro USB, HDMI, DC2.5
Special Features	Pre-recording, Time-lapse, Slow Motion, Timer, Burst Shooting, White Balance, Loop Recording, Driving Mode, Image Flipping, Exposure Adjustment

9. WARRANTY AND SUPPORT

Yolansin provides lifetime after-sales service for this product. If you have any questions, require assistance, or need to make a warranty claim, please contact our customer support team via the after-sales email address provided with your purchase or on the official Yolansin website.