

[Manuals.plus](#) /

› [KODAK](#) /

› KODAK Mini 2 ERA 4PASS Portable Photo Printer User Manual

KODAK Mini 2 ERA

KODAK Mini 2 ERA 4PASS Portable Photo Printer User Manual

Model: Mini 2 ERA (PM00-152A)

1. INTRODUCTION

This user manual provides essential information for the safe and effective operation of your KODAK Mini 2 ERA 4PASS Portable Photo Printer. Please read this manual thoroughly before using the device and retain it for future reference.



Image: KODAK Mini 2 ERA Portable Photo Printer, yellow model.

2. PACKAGE CONTENTS

Verify that all items are present in your product package:

- KODAK Mini 2 ERA Portable Photo Printer
- Initial Cartridge (8 Sheets)
- Strap
- Quick Start Manual
- Additional 60 Sheets (depending on bundle)

Note: A USB-C charging cable is not always included and may need to be purchased separately.



Image: Visual representation of the KODAK Mini 2 ERA printer and its included accessories, such as the initial cartridge, strap, quick start manual, and additional photo paper.

3. SETUP

3.1 Charging the Printer

Before initial use, fully charge the printer. Connect a USB-C cable (not included) to the printer's charging port and a power source.

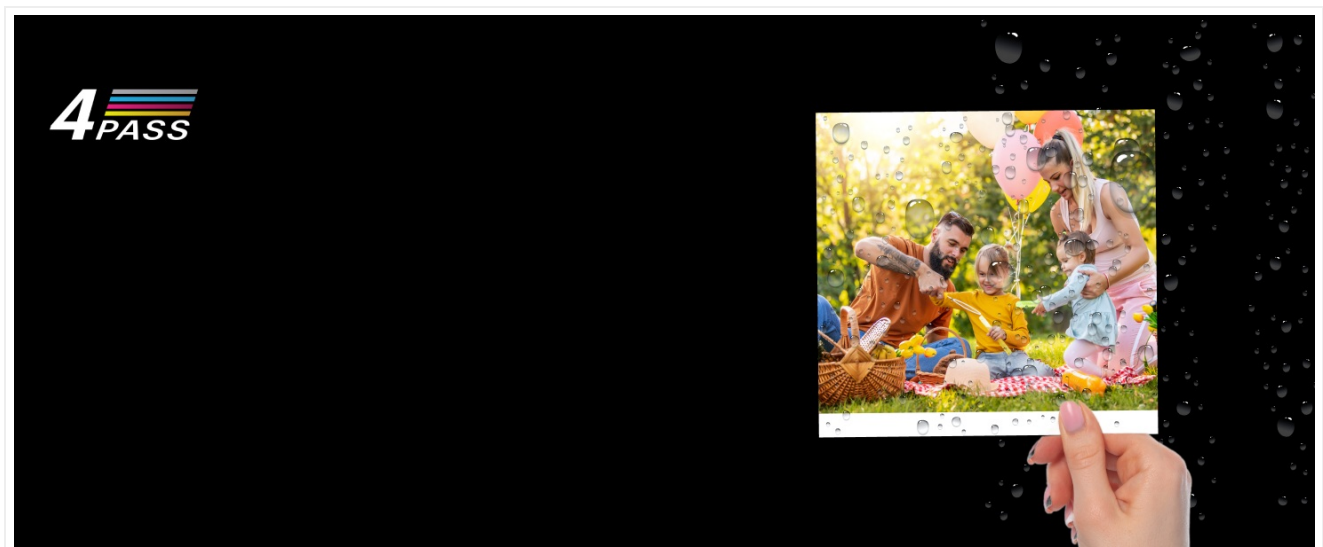


Image: Close-up of the KODAK Mini 2 ERA printer highlighting the USB-C charging port, indicating its location for power connection.

3.2 Installing the Photo Cartridge

1. Open the cartridge cover on the printer.
2. Insert the photo cartridge into the designated slot.
3. Push the cartridge firmly until you hear a "click" sound, indicating it is securely in place.
4. Close the cartridge cover.



Image: Three-step visual guide demonstrating how to insert a photo cartridge into the KODAK Mini 2 ERA printer, showing the open cover, cartridge insertion, and the final secure position.

3.3 Connecting via Bluetooth and App Installation

1. Download the KODAK Photo Printer app from the App Store (iOS) or Google Play Store (Android).
2. Turn on your KODAK Mini 2 ERA printer.
3. Enable Bluetooth on your mobile device.
4. Open the KODAK Photo Printer app and follow the on-screen instructions to pair your device with the printer.



Image: QR codes for downloading the KODAK Photo Printer app from Google Play Store and Apple App Store, facilitating easy access for users.

4. OPERATING THE PRINTER

4.1 Printing Photos

1. Ensure your printer is charged and connected via Bluetooth to the KODAK Photo Printer app.
2. Select a photo from your device's gallery within the app.
3. Utilize the app's editing features, such as adding frames or stickers, if desired.
4. Select your preferred print type: **Borderless** for a full-bleed image or **Bordered** to add a white frame for notes.
5. Initiate the print command from the app. The printer uses 4PASS technology, layering yellow, magenta, cyan, and a protective laminate. The paper will pass through the printer multiple times during this process.

6. Wait for the print to fully emerge from the printer. Do not pull the paper during printing.

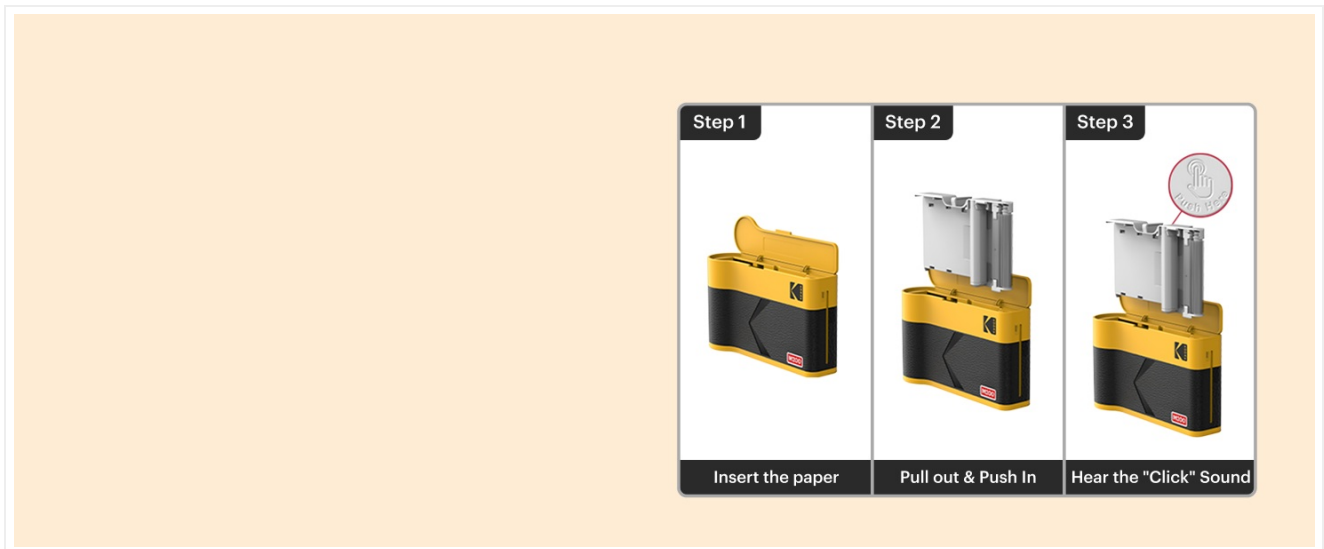


Image: A KODAK Mini 2 ERA printer actively printing a photo, with a smartphone displaying the KODAK app interface and a Bluetooth icon, illustrating the wireless printing process.

4.2 Understanding 4PASS Technology

The KODAK Mini 2 ERA printer employs 4PASS (Dye Sublimation) technology to produce high-quality, durable prints. This process involves four passes:

- **Pass 1: Yellow** - The yellow dye layer is applied.
- **Pass 2: Magenta** - The magenta dye layer is applied.
- **Pass 3: Cyan** - The cyan dye layer is applied.
- **Pass 4: Overcoat** - A protective clear laminate layer is applied, making the prints fingerprint and water-resistant.

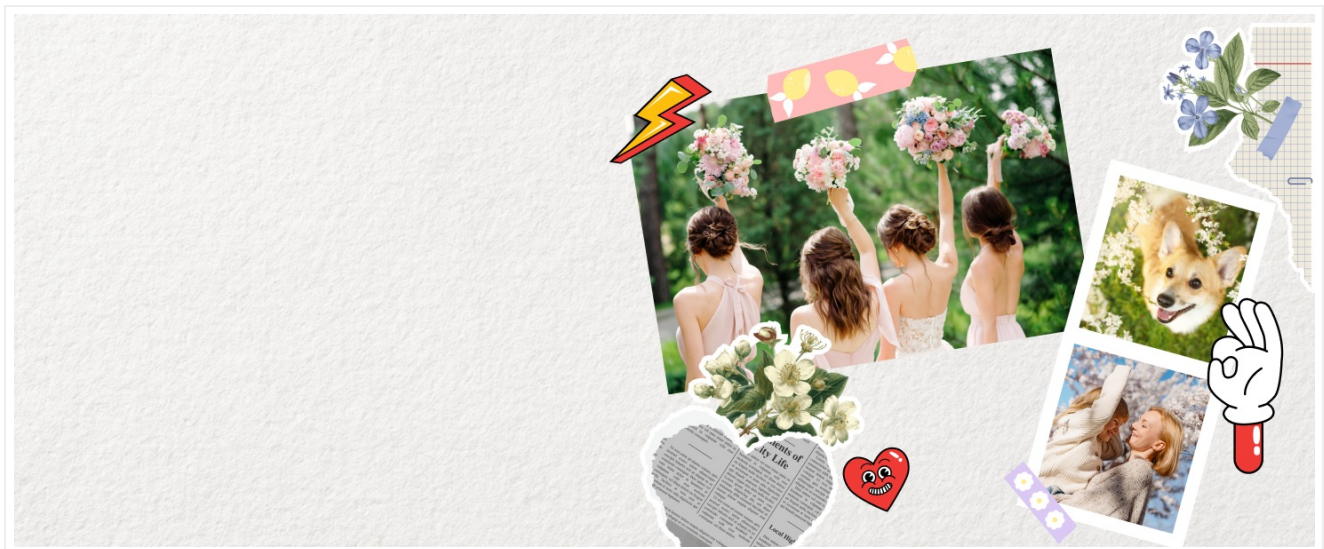


Image: A visual representation of the 4PASS printing process, showing separate layers of yellow, magenta, and cyan dyes, followed by a full-color image, illustrating how colors are built up.

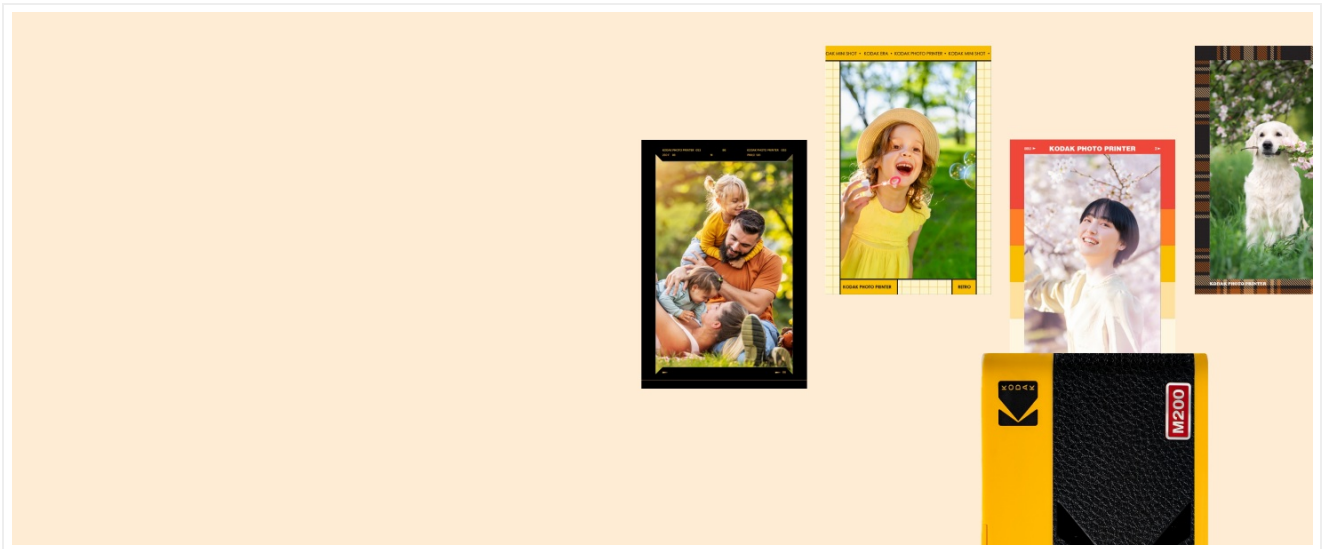


Image: A side-by-side comparison of print quality, showing a grainy image labeled "Others" next to a clear, vibrant image labeled "KODAK," demonstrating the superior output of the 4PASS technology.

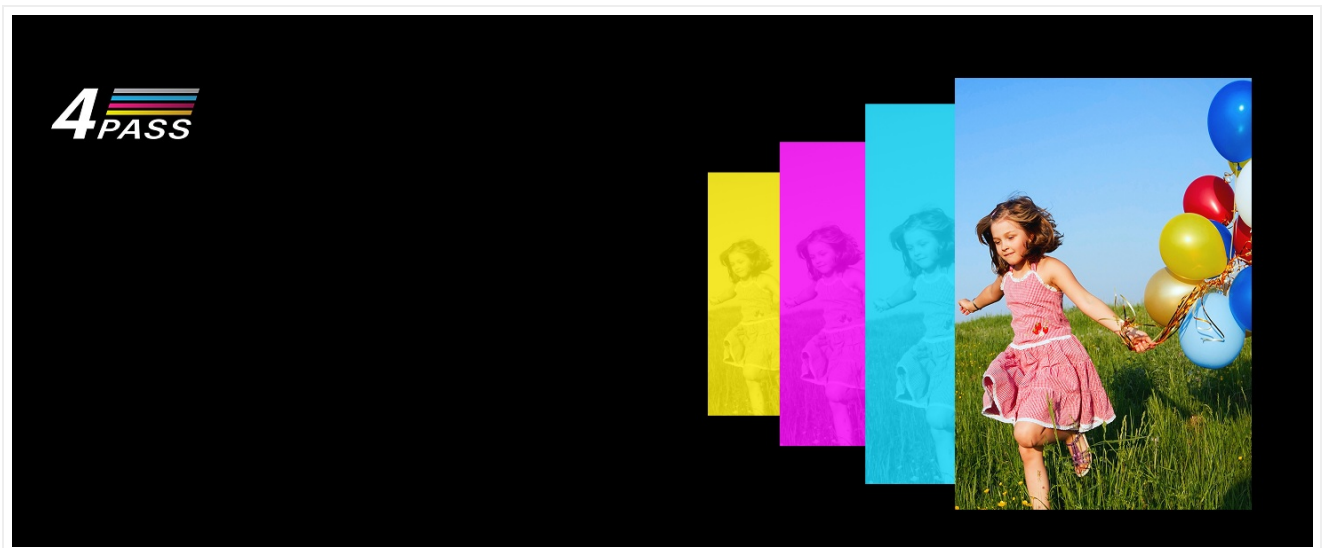


Image: A printed photo from the KODAK Mini 2 ERA being held, with water droplets on its surface, illustrating the water-resistant feature of the 4PASS prints.

4.3 Photo Sizes and Styles

The printer supports 2x3 inch photos. You can choose between two styles:

- **Borderless:** The image fills the entire 2.1 x 3.4 inch print area.
- **Bordered:** A white border is added around the image, allowing space for writing or decoration.



Image: A side-by-side comparison of two printed photos, one labeled "Borderless" showing a full image, and the other labeled "Border" showing the same image with a white frame, demonstrating the two available print styles.

5. MAINTENANCE

5.1 Replacing the Photo Cartridge

When the photo paper runs out or the print quality degrades, replace the cartridge. Follow the same steps as initial installation (Section 3.2).

Note: Ensure you use genuine KODAK 4PASS cartridges for optimal performance and print quality.

5.2 Cleaning the Printer

- Use a soft, dry, lint-free cloth to gently wipe the exterior of the printer.
- Do not use liquid cleaners or solvents, as these can damage the device.
- Avoid touching the print head or internal components.

5.3 Storage

Store the printer in a cool, dry place away from direct sunlight and extreme temperatures. Remove the cartridge if storing for an extended period.

6. TROUBLESHOOTING

Problem	Possible Cause	Solution
Printer not turning on	Low battery	Charge the printer using a USB-C cable.
Cannot connect via Bluetooth	Bluetooth disabled on device; printer not in pairing mode; interference.	Ensure Bluetooth is enabled. Restart printer and app. Move closer to the printer.
Poor print quality (streaks, incorrect colors)	Cartridge issues; low ink; old/grainy source photo.	Replace the photo cartridge. Use high-resolution source images.
Paper jam or printer stops mid-print	Cartridge not properly installed; foreign object; film tearing (as per reviews).	Ensure cartridge is securely installed. Power cycle the printer. If issues persist, contact customer support.

Problem	Possible Cause	Solution
App not responding	App error; device compatibility.	Close and restart the app. Check for app updates. Ensure your device meets app requirements.

7. SPECIFICATIONS

Feature	Detail
Brand	KODAK
Model Name	Mini 2 ERA
Item Model Number	PM00-152A
Printing Technology	4PASS (Dye Sublimation)
Connectivity Technology	Bluetooth
Compatible Devices	Smartphones (via KODAK Photo Printer App)
Print Media	Glossy photo paper
Sheet Size	2x3 inches (5.3 x 8.6 cm)
Max Input Sheet Capacity	68 sheets (with specific cartridges)
Printer Output	Color
Max Print Speed (Color)	1 ppm
Hardware Interface	USB Type C (for charging)
Product Dimensions	3.15 x 1.18 x 3.15 inches (approx.)
Item Weight	1.72 pounds (approx.)
Batteries	1 D battery required (included)
UPC	192143003953

8. WARRANTY AND SUPPORT

8.1 Warranty Information

For detailed warranty information, please refer to the warranty card included with your product or visit the official KODAK Photo Printer website. Warranty terms and conditions may vary by region.

8.2 Customer Support

If you encounter any issues not covered in this manual or require further assistance, please contact KODAK customer support. Contact details can typically be found on the official KODAK Photo Printer website or within the KODAK Photo Printer application.



