

mijob DC92-01470F, DC92-01470L, DC92-01747, DC92-01450

MiJob Washing Machine Computer Board Instruction Manual

COMPATIBLE WITH SAMSUNG MODELS DC92-01470F, DC92-01470L, DC92-01747, DC92-01450

1. Introduction

This manual provides essential information for the installation, operation, maintenance, and troubleshooting of the MiJob Washing Machine Computer Board. This replacement control board is designed to be compatible with specific Samsung washing machine models. Please read these instructions carefully before proceeding with installation or any service to ensure proper function and safety.

2. Product Overview

The MiJob Washing Machine Computer Board serves as a direct replacement for the original control board in compatible Samsung washing machines. It is engineered for durability and reliable performance, ensuring your appliance functions correctly.

Compatible Samsung Models:

- DC92-01470F
- DC92-01470L
- DC92-01747
- DC92-01450

Key Features:

- **Durable Construction:** Designed for a long service life.
- **Easy Installation:** Facilitates straightforward disassembly and replacement during daily maintenance.
- **High Compatibility:** Exquisitely designed to be highly compatible with the specified equipment.

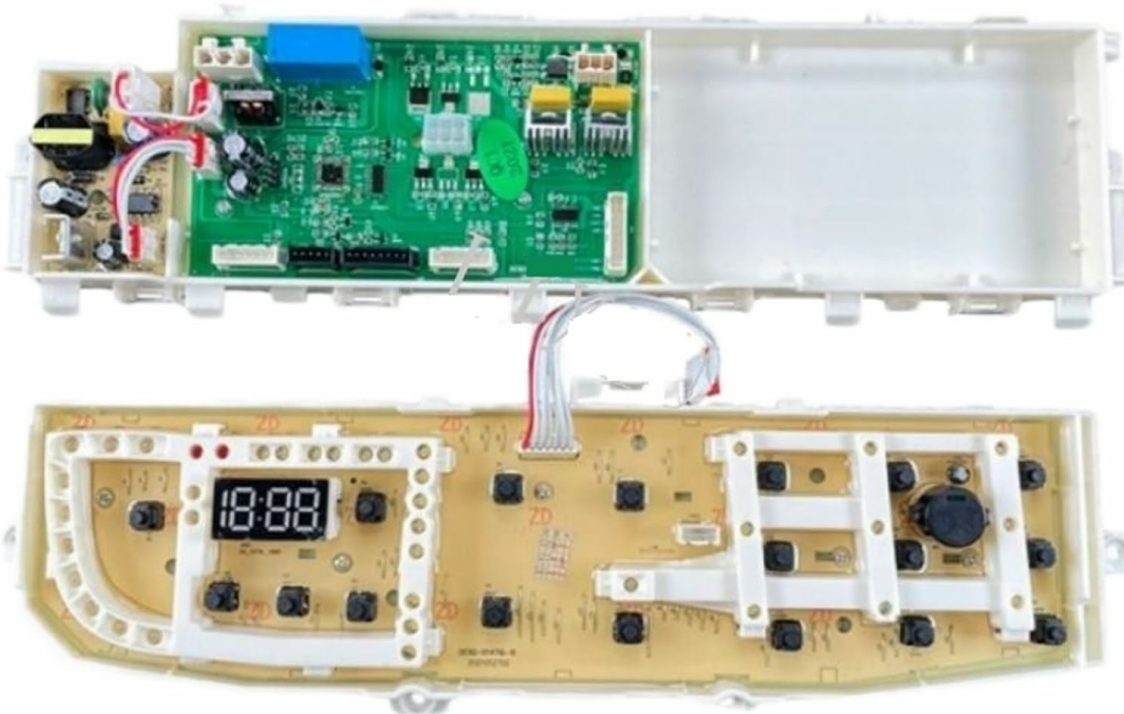


Figure 1: MiJob Washing Machine Computer Board. The top section shows the main circuit board with various electronic components and connectors. The bottom section reveals the user interface side, featuring a digital display (18:88) and several control buttons, indicating the front panel of the washing machine.

3. Safety Information

WARNING: Always disconnect the washing machine from the power supply before attempting any installation, repair, or maintenance. Failure to do so can result in electric shock, injury, or death.

- Ensure the work area is dry and well-lit.
- Wear appropriate personal protective equipment, such as gloves and safety glasses.
- If you are not confident in performing the installation, seek assistance from a qualified appliance technician.
- Handle the circuit board by its edges to avoid damaging electronic components or introducing static discharge.

4. Setup and Installation

This section outlines the general steps for replacing a washing machine computer board. Specific procedures may vary depending on your washing machine model. Always refer to your washing machine's

service manual for detailed instructions.

1. **Disconnect Power:** Unplug the washing machine from the electrical outlet. Turn off the water supply valves.
2. **Access Control Panel:** Carefully open or remove the washing machine's control panel to gain access to the existing computer board. This often involves removing screws or clips.
3. **Document Connections:** Before disconnecting any wires, take clear photos or make detailed diagrams of all wire connections to the old board. Note the color and position of each wire.
4. **Disconnect Wires:** Carefully disconnect all wire harnesses and connectors from the old computer board.
5. **Remove Old Board:** Unscrew or unclip the old computer board from its housing.
6. **Install New Board:** Position the MiJob replacement board into the housing. Ensure it fits securely.
7. **Reconnect Wires:** Using your photos or diagrams, carefully reconnect all wire harnesses and connectors to the new board. Double-check each connection for accuracy and security.
8. **Reassemble Control Panel:** Secure the control panel back into its original position.
9. **Restore Power:** Plug the washing machine back into the electrical outlet and turn on the water supply.
10. **Test Functionality:** Run a test cycle to ensure the washing machine operates correctly with the new board.

Note: Improper installation can lead to damage to the washing machine or the new control board. If you are unsure, consult a professional technician.

5. Operating Instructions

The MiJob Washing Machine Computer Board is a component that enables the washing machine's functions. Once installed, the operation of your washing machine will revert to its standard functionality as designed by Samsung. Refer to your washing machine's original user manual for specific instructions on selecting wash cycles, water temperature, spin speed, and other operational settings.

The digital display and buttons on the board (as shown in Figure 1) are part of the user interface, allowing you to interact with the washing machine's programs. Ensure all connections are secure for proper response to user inputs.

6. Maintenance

The computer board itself requires minimal maintenance. To ensure its longevity and proper function:

- **Keep Dry:** Prevent any liquid from coming into contact with the control board. Moisture can cause short circuits and damage.
- **Cleanliness:** If the control panel area becomes dusty, gently wipe it with a dry, soft cloth. Avoid using harsh chemicals or abrasive cleaners.
- **Regular Checks:** Periodically inspect the wiring connections to the board to ensure they remain secure and free from corrosion. (*Ensure power is disconnected before inspection.*)

7. Troubleshooting

If your washing machine experiences issues after installing the new computer board, consider the following troubleshooting steps:

Problem	Possible Cause	Solution
---------	----------------	----------

Problem	Possible Cause	Solution
Washing machine does not power on.	Loose power connection, faulty outlet, or incorrect board installation.	Check power cord, test outlet, re-verify all board connections.
Machine starts but cycles incorrectly or displays error codes.	Incorrect wiring, incompatible board, or sensor issue.	Review wiring diagrams, ensure board compatibility, consult washing machine's service manual for error codes.
Buttons or display not responding.	Loose ribbon cable connection to the display/button panel, or damaged panel.	Check the ribbon cable connection between the main board and the user interface panel.
Machine leaks water.	Unrelated to control board, but possibly damaged hoses or seals during installation.	Inspect water inlet hoses, drain hose, and door seal for damage or improper connection.

If troubleshooting steps do not resolve the issue, it is recommended to contact a qualified service technician.

8. Specifications

Attribute	Detail
Brand	MiJob
Compatible Models	Samsung DC92-01470F, DC92-01470L, DC92-01747, DC92-01450
Manufacturer	xiaojinxiu
Item Weight	50 Grams
Unit Count	1.0 Count
ASIN	B0CHXWZRVM

9. Warranty and Support

For warranty information regarding your MiJob Washing Machine Computer Board, please refer to the documentation provided at the time of purchase or contact the seller directly. Support for installation or troubleshooting beyond this manual's scope should be directed to a qualified appliance repair technician or the product's vendor.