

## ShiftCam LensUltra 1.33x Anamorphic

# Shiftcam LensUltra 1.33x Anamorphic Lens User Manual

**Brand:** ShiftCam | **Model:** LensUltra 1.33x Anamorphic Lens

## 1. INTRODUCTION

Welcome to the user manual for your Shiftcam LensUltra 1.33x Anamorphic Lens. This lens is designed to transform your mobile footage into cinematic masterpieces, offering a true widescreen ratio and unique visual effects. By following these instructions, you will learn how to properly set up, operate, and maintain your lens to achieve professional-grade results.

The LensUltra 1.33x Anamorphic Lens provides a 1.33x magnification and a 113° angle of view, delivering captivating widescreen visuals and signature cinematic lens flares.

## 2. PRODUCT OVERVIEW

The Shiftcam LensUltra 1.33x Anamorphic Lens is engineered for mobile filmmakers seeking to elevate their content. Key features include:

- **Cinematic Widescreen Experience:** Achieves a true 21:9 cinematic widescreen ratio.
- **Dreamy Focus and Moody Flares:** Creates surreal perspectives with dreamy focus and signature blue lens flares.
- **Advanced Fluorite Optics:** Utilizes fluorite to reduce color fringing and enhance color accuracy, resulting in sharper images.
- **Universal Compatibility:** Compatible with all smartphones when used with a ShiftCam camera case or universal mount (sold separately).
- **Innovative Dual-Purpose Lens Pouch:** Protects the lens and provides quick access, eliminating the need for separate lens caps.
- **Filter Compatibility:** Designed to be used with Variable Neutral Density (VND) and Circular Polarizer (CPL) filters (sold separately) for enhanced motion blur and reduced reflections.



Figure 2.1: The Shiftcam LensUltra 1.33x Anamorphic Lens attached to a smartphone, showcasing its compact design and integration.



Figure 2.2: A detailed view of the LensUltra 1.33x Anamorphic Lens, highlighting its optical elements and mounting ring.

## 3. SETUP

### 3.1 Attaching the Lens

1. **Prepare your Smartphone:** Ensure your smartphone is clean and free of debris around the camera module.
2. **Install Mounting Solution:** The LensUltra requires a ShiftCam camera case or a universal mount (sold separately) for attachment.
  - For iPhone users, use a compatible ShiftCam camera case with a built-in lens mount.
  - For other smartphone models, use the ShiftCam universal mount.
3. **Align and Mount the Lens:** Carefully align the LensUltra 1.33x Anamorphic Lens with the camera opening on your ShiftCam case or universal mount. Gently twist or slide the lens into place until it is securely fastened. Ensure the lens is centered over your phone's primary camera.

Transform Your Shots With

# Award Winning Products



red**dot** winner 2018



red**dot** winner 2021



red**dot** winner 2023



Figure 3.1: Illustration of the Shiftcam mounting solutions, including a dedicated iPhone case and a universal mount for other

devices.

### 3.2 Software Setup (De-Squeezing)

To fully utilize the 1.33x Anamorphic Lens and achieve the correct widescreen aspect ratio, the captured footage must be "de-squeezed" using compatible video editing applications.

Recommended applications for de-squeezing include:

- Filmic Pro (mobile app)
- Adobe Premiere Pro (desktop software)
- Final Cut Pro (desktop software)

Refer to the specific application's documentation for detailed instructions on de-squeezing anamorphic footage.

## 4. OPERATING INSTRUCTIONS

---

### 4.1 Capturing Cinematic Footage

Once the lens is mounted and your de-squeezing software is ready, you can begin capturing unique cinematic content:

- **Widescreen Composition:** Frame your shots with the 21:9 widescreen ratio in mind. This lens naturally expands the horizontal field of view, allowing for more expansive landscapes and immersive scenes.
- **Utilizing Lens Flares:** The LensUltra 1.33x Anamorphic Lens is designed to produce signature blue horizontal lens flares when a strong light source is present in or near the frame. Experiment with light sources (e.g., streetlights, car headlights, sun) to achieve desired flare effects.
- **Dreamy Focus and Bokeh:** The anamorphic design contributes to a unique oval bokeh and a dreamy, soft focus, especially noticeable in the background. This effect is ideal for adding artistic depth to your subjects.





Figure 4.1: A visual comparison demonstrating the expanded widescreen view and cinematic lens flare achieved with the LensUltra 1.33x Anamorphic Lens compared to standard smartphone footage.

# LensUltra Mounting Solution



Case with in built lens  
mount for iPhone Users

Universal Lens Mount  
for all other devices

Figure 4.2: A close-up example showcasing the distinctive horizontal blue lens flare, a hallmark of anamorphic lenses.

## 4.2 Using with Filters

The LensUltra 1.33x Anamorphic Lens is compatible with ShiftCam Variable Neutral Density (VND) and Circular Polarizer (CPL) filters (sold separately). These filters can be attached to the front of the anamorphic lens to:

- **VND Filters:** Control exposure in bright conditions, allowing for slower shutter speeds to achieve motion blur effects.
- **CPL Filters:** Reduce unwanted reflections from non-metallic surfaces (water, glass) and enhance color saturation in skies and foliage.

## 5. MAINTENANCE

Proper care will ensure the longevity and optimal performance of your LensUltra 1.33x Anamorphic Lens.

- **Cleaning the Lens:** Use a soft, lint-free microfiber cloth specifically designed for optical lenses. For stubborn smudges, a small amount of lens cleaning solution can be applied to the cloth (not directly to

the lens). Avoid using abrasive materials or harsh chemicals.

- **Protecting the Lens:** Always store the lens in its innovative dual-purpose lens pouch when not in use. This pouch is designed to protect the lens from dust, scratches, and minor impacts.
- **Handling:** Avoid touching the glass elements of the lens directly with your fingers. Hold the lens by its barrel.
- **Storage:** Store the lens in a cool, dry place away from direct sunlight and extreme temperatures.

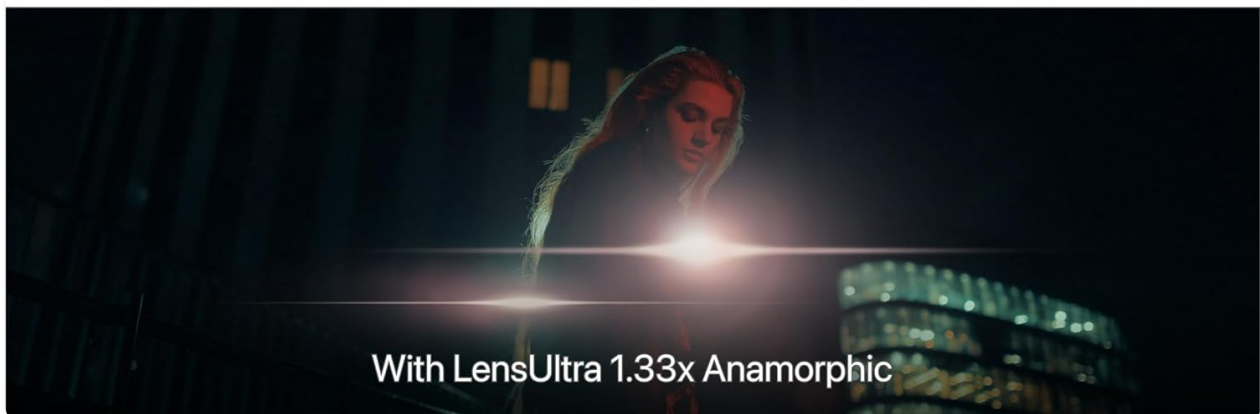
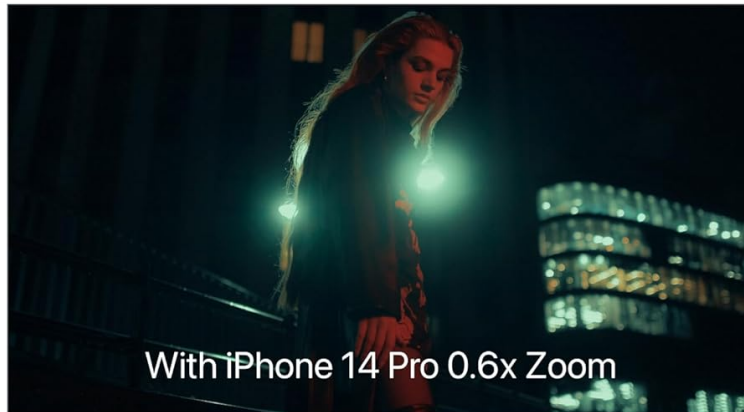


Figure 5.1: The innovative dual-purpose lens pouch, designed for convenient and protective storage of your LensUltra lens.

## 6. TROUBLESHOOTING

If you encounter issues with your LensUltra 1.33x Anamorphic Lens, consider the following common solutions:

- **Image Appears Squeezed/Distorted:** Ensure you are using a compatible video editing application (e.g., Filmic Pro, Adobe Premiere Pro, Final Cut Pro) to de-squeeze the footage. The raw footage from an anamorphic lens will naturally appear horizontally compressed.
- **Lens Not Centered/Vignetting:** Double-check that the lens is securely and correctly aligned over your smartphone's primary camera. Adjust the mounting solution if necessary.
- **Blurry Images:**
  - Ensure the lens and your phone's camera are clean.
  - Verify that the lens is properly attached and not loose.
  - Check your phone's focus settings.
- **Unwanted Flares/Glares:** While cinematic flares are a feature, excessive glare can occur in very bright,



direct light. Try adjusting your shooting angle or using a lens hood (if available and compatible) to minimize unwanted light.

For persistent issues, please refer to the ShiftCam official website for further support or contact their customer service.

## 7. SPECIFICATIONS

Feature	Detail
Magnification	1.33x
Angle	MAX 113°
AR Coating	Multilayer
Deformation	-18%
Minimum Focus Distance	70-90cm
Mount	M12 x P0.75
Length	21.3mm
Net Weight	34g
Material	Fluorite Glass & Aluminium
Product Dimensions	3.93 x 8.11 x 8.11 inches (packaging/overall)
Item Weight	12 ounces (packaging/overall)
Compatible Mountings	Universal Mount (requires ShiftCam case or universal mount)

## 8. WARRANTY & SUPPORT

For information regarding the product warranty, please refer to the warranty card included with your purchase or visit the official ShiftCam website.

For technical support, product registration, or frequently asked questions, please visit the ShiftCam support page or contact their customer service directly. Contact details are typically available on the manufacturer's website.



[\[pdf\]](#)

CyberPort QR Codes indd Tipy pro použití jednotlivých objektivů ShiftCam LensUltra Deluxe Kit Tutorial Videos easystore.cz manualy |||

LENSULTRA TUTORIAL VIDEOS LENSULTRA 16mm WIDE ANGLE LENSULTRA 200 FISHEYE LENSULTRA 1.33x ANAMORPHIC LENSULTRA 1.55x ANAMORPHIC LENSULTRA 75mm LONG RANGE MACRO LENSULTRA 10x TRADITIONAL MACRO LENSULTRA 60mm TELEPHOTO ...

lang: **score:33** filesize: 2.07 M page\_count: 1 document date: 2024-03-13