



Manuals.plus /

› KTC /

› KTC 27-inch 2K 170Hz Fast IPS Gaming Monitor (Model H27T22) Instruction Manual

KTC H27T22

KTC 27-inch 2K 170Hz Fast IPS Gaming Monitor (Model H27T22) Instruction Manual

Model: H27T22

1. INTRODUCTION

This instruction manual provides essential information for the proper setup, operation, and maintenance of your KTC 27-inch 2K 170Hz Fast IPS Gaming Monitor, Model H27T22. Please read this manual thoroughly before using the product to ensure optimal performance and to prevent damage.



Image: Front and back view of the KTC 27-inch 2K 170Hz Fast IPS Gaming Monitor, showcasing its design and a vibrant gaming display.

2. PACKAGE CONTENTS

Verify that all items listed below are present in your product packaging:

- 1 x KTC 27-inch Gaming Monitor
- 1 x Monitor Base
- 1 x Monitor Bracket
- 1 x 59" (1.5M) DisplayPort (DP) Cable
- 1 x 59" (1.5M) Power Cord

3. SETUP INSTRUCTIONS

3.1 Assembling the Stand

1. Carefully remove the monitor and stand components from the packaging.
2. Attach the monitor bracket to the back of the monitor. Ensure it clicks securely into place or is fastened with screws if provided.
3. Connect the monitor base to the bracket. Tighten any screws to secure the assembly.

4. Place the assembled monitor on a stable, flat surface.

3.2 Connecting Cables

The monitor offers various connectivity options. Refer to the image below for port locations.



Image: Rear panel of the KTC monitor detailing the available input and output ports.

- **Power Connection:** Connect the provided power cord to the DC port on the monitor and then to a power outlet.
- **Video Input:** Connect the DisplayPort (DP) cable from your computer's graphics card to one of the DP 1.2 ports on the monitor. Alternatively, use an HDMI 2.0 cable for HDMI connections.
- **USB Connection:** Connect a USB cable from your computer to the monitor's USB port for USB hub functionality.
- **Audio Output:** Connect headphones or external speakers to the earphone jack if desired.

Note: For optimal performance, especially for gaming, it is recommended to use the DisplayPort connection to achieve the full 170Hz refresh rate. HDMI 2.0 supports up to 144Hz at 2K resolution.

4. OPERATING INSTRUCTIONS

4.1 Power On/Off

Locate the 5-way OSD navigation joystick, typically found on the back or bottom of the monitor. Press the joystick inwards to power on or power off the monitor.

4.2 On-Screen Display (OSD) Menu Navigation

The 5-way joystick is used to navigate the OSD menu:

- **Press In:** Select an option or confirm a setting.
- **Move Up/Down:** Navigate through menu options.
- **Move Left/Right:** Adjust values or move between sub-menus.

4.3 Adjusting Display Settings

Access the OSD menu to configure various display settings:

- **Brightness/Contrast:** Adjust these settings to suit your viewing environment.
- **Color Settings:** Fine-tune color temperature, gamma, and color space (sRGB, DCI-P3) for accurate color reproduction. The monitor supports 131% sRGB and 97% DCI-P3 color gamut with 16.7 million 8-bit colors.
- **Refresh Rate:** Ensure your graphics card settings are configured to utilize the monitor's 170Hz refresh rate for the smoothest experience. The monitor supports 144Hz and 170Hz.
- **Response Time:** The monitor features a 1ms GTG response time for minimal motion blur.

170Hz 1ms(GTG) 1440P

True Fast & Extremely Smooth



170Hz
1ms 1440p

60Hz
5ms 1080p

Image: Visual comparison illustrating the difference in smoothness between 170Hz 1ms GTG and 60Hz 5ms displays.

Enhanced Display Color and Wider Color Gamut



Image: Display quality features including 131% sRGB, 16.7 million colors, 8-bit color depth, and HDR10 support.

4.4 Ergonomic Adjustments

The monitor stand allows for various adjustments to optimize your viewing comfort and productivity:

- **Height Adjustment:** Adjust the monitor height by up to 5.11 inches (130mm).
- **Tilt:** Tilt the screen from -5° to 20° to find your preferred vertical angle.
- **Swivel:** Rotate the monitor horizontally up to 45° left or right.
- **Pivot:** Rotate the screen 90° to switch between landscape and portrait modes.

Ergonomic Design Find Your Perfect Angle



Image: Illustrations of the monitor's ergonomic capabilities, including tilt, swivel, height adjustment, and pivot functionality.



Image: The KTC monitor rotated into portrait orientation, highlighting its pivot feature for vertical display.

4.5 Gaming Features (GamePlus)

The monitor includes several GamePlus features designed to enhance your gaming experience:

- **Crosshairs:** Provides an on-screen crosshair for improved aiming accuracy in first-person shooter (FPS) games.
- **Black eQualizer:** Adjusts the gamma curve to brighten dark areas without overexposing bright ones, revealing hidden details in shadows.
- **Timer:** An on-screen timer for tracking in-game events.

Superior Game Assists · HDR10



Timer



Crosshair



FPS Counter

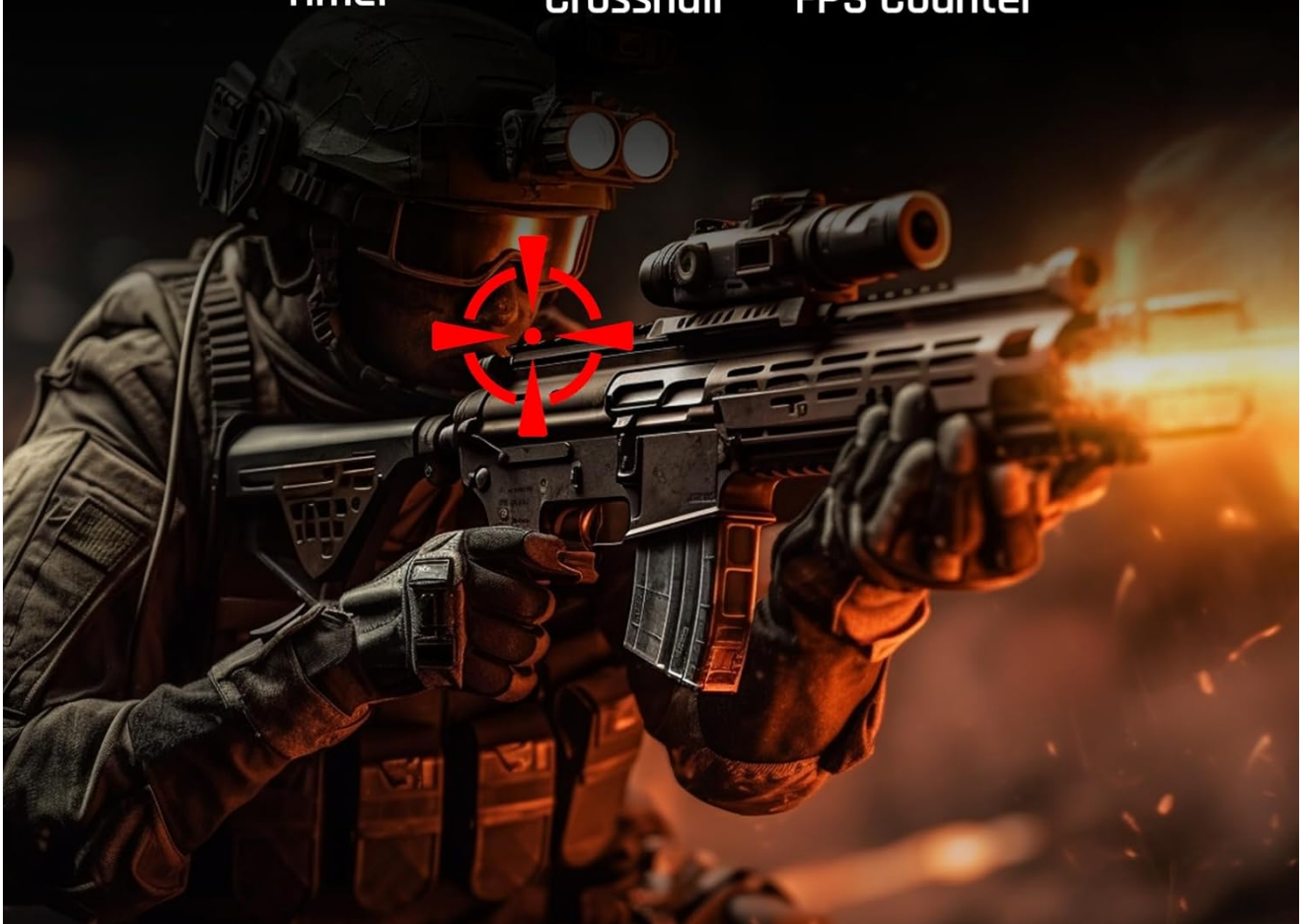


Image: A gaming scenario demonstrating the use of GamePlus features such as crosshairs, timer, and FPS counter.

4.6 Adaptive Sync Technology

The monitor is compatible with FreeSync Premium and G-Sync, providing tear-free and stutter-free gaming by synchronizing the monitor's refresh rate with your graphics card's frame rate.

5. KEY FEATURES

- **Fast IPS Panel:** Equipped with an AUO 8.2 Fast IPS panel, offering rapid response times and wide viewing angles (178°).
- **2K WQHD Resolution:** 2560x1440p resolution delivers sharp and detailed visuals.
- **High Refresh Rate & Low Response Time:** 170Hz refresh rate and 1ms GTG (Gray-to-Gray) response time for smooth, fluid motion.
- **Vibrant Color Reproduction:** Features 131% sRGB and 97% DCI-P3 color gamut, displaying 16.7 million 8-bit colors for rich and accurate visuals.
- **Eye Care Technology:** Includes Low Blue Light and Flicker-Free technologies to reduce eye strain during extended use.

Immersive Visual Experience



AUO8.2 Fast IPS



178° Viewing Angle



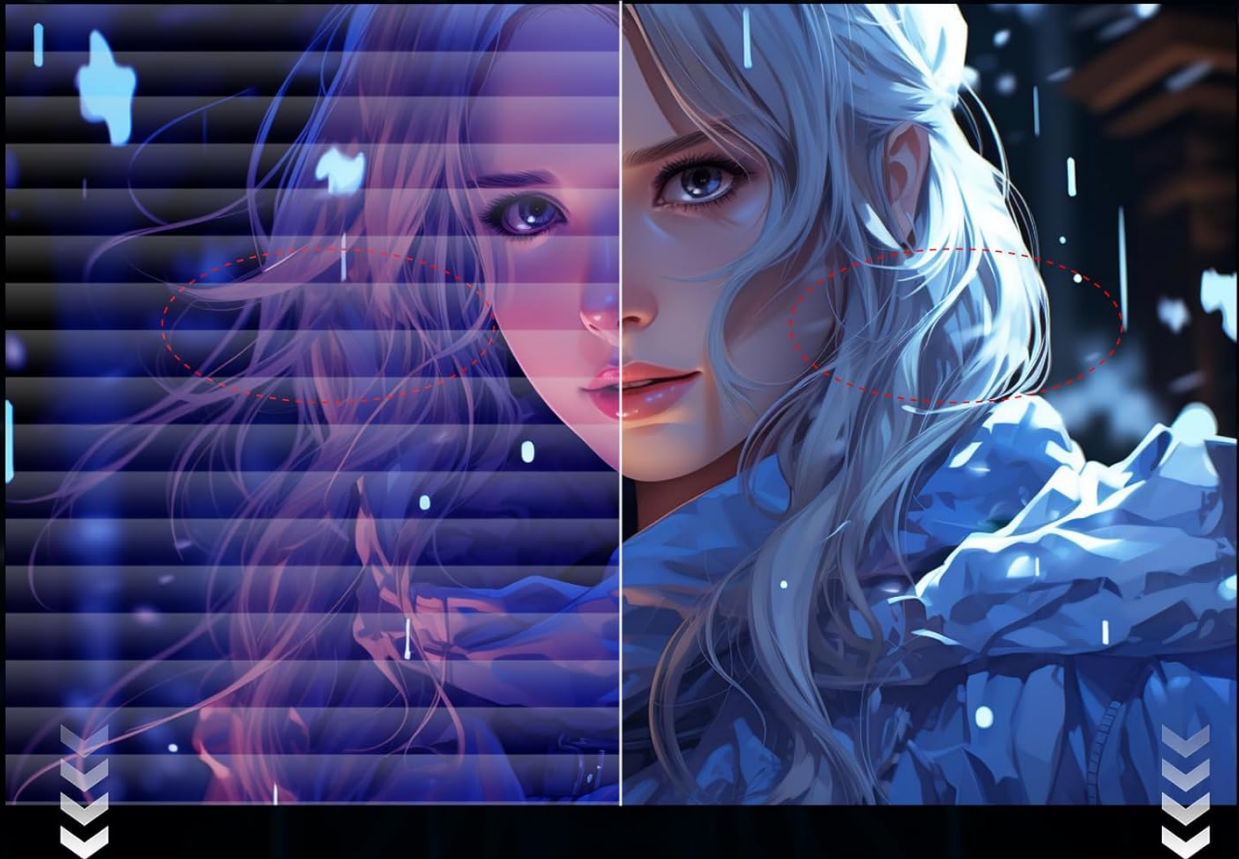
Eye Saver Mode



Image: A user enjoying an immersive visual experience, emphasizing the monitor's Fast IPS panel, wide viewing angles, and eye protection features.

Protect Your Eyes

Low Blue Light & Flicker Free



Conventional

Low Blue Light

Image: Comparison demonstrating the benefits of Low Blue Light and Flicker-Free technologies for eye protection.

6. MAINTENANCE

6.1 Cleaning the Monitor

- Always power off the monitor and unplug the power cord before cleaning.
- Use a soft, lint-free cloth lightly dampened with water or a specialized screen cleaner.
- Do not spray cleaning solutions directly onto the screen.
- Avoid using abrasive cleaners, alcohol, or ammonia-based solutions, as these can damage the screen surface.

6.2 General Care

- Keep the monitor away from direct sunlight, excessive heat, and humidity.
- Ensure proper ventilation around the monitor to prevent overheating.
- Avoid placing heavy objects on the monitor or its cables.

7. TROUBLESHOOTING

Problem	Possible Cause	Solution
No image on screen	Power cable disconnected; Video cable disconnected; Incorrect input source.	Check power connections; Ensure video cable is securely connected to both monitor and computer; Select correct input source via OSD menu.
Image is blurry or distorted	Incorrect resolution; Graphics driver issues.	Set display resolution to 2560x1440; Update graphics drivers.
No sound from headphones/speakers	Audio cable disconnected; Volume too low; Incorrect audio output selected on computer.	Ensure audio device is connected to the earphone jack; Adjust volume; Select monitor as audio output device in computer settings.
Monitor flickers or displays lines	Faulty cable; Graphics card issue; Interference.	Try a different video cable; Test with another computer/graphics card; Ensure no strong electromagnetic interference sources are nearby.

8. SPECIFICATIONS

Feature	Detail
Brand	KTC
Model Number	H27T22
Screen Size	27 Inches
Panel Type	Fast IPS
Resolution	2560 x 1440 (WQHD)
Refresh Rate	170Hz (Max via DisplayPort), 144Hz (Max via HDMI)
Response Time	1ms GTG
Aspect Ratio	16:9
Color Gamut	131% sRGB, 97% DCI-P3
Display Colors	16.7 Million (8-bit)
Image Brightness	350 Candela
Connectivity	2x DisplayPort 1.2, 1x HDMI 2.0, 1x USB 2.0, 1x Earphone Jack, 1x DC Power Input
Ergonomics	Height, Tilt, Swivel, Pivot Adjustments
VESA Compatibility	100x100mm
Product Dimensions (with stand)	30.7 x 19.09 x 7.08 inches
Item Weight	12.1 pounds
Voltage	12 Volts (DC)

9. WARRANTY AND SUPPORT

9.1 Warranty Information

KTC products are covered by a manufacturer's warranty. Please refer to the warranty card included in your product packaging or visit the official KTC website for detailed warranty terms and conditions. Keep your purchase receipt as proof of purchase for warranty claims.

9.2 Customer Support

For technical assistance, troubleshooting, or any inquiries regarding your KTC monitor, please contact KTC customer support. Contact information can typically be found on the official KTC website or on the warranty card. You can also visit the KTC Store on Amazon for additional product information and support resources.