

Manuals+

[Q & A](#) | [Deep Search](#) | [Upload](#)

manuals.plus /

- › [PHILIPS](#) /
- › [Philips Electric Shaver Series 3000 - Model S3342/13 User Manual](#)

PHILIPS S3342/13

Philips Electric Shaver Series 3000 User Manual

Model: S3342/13

INTRODUCTION

This manual provides essential instructions for the safe and effective use of your Philips Electric Shaver Series 3000, model S3342/13. This shaver is designed for a comfortable wet or dry shave, featuring SkinProtect technology and PowerCut blades. Please read this manual thoroughly before first use and retain it for future reference.



Image: Philips Electric Shaver Series 3000 (S3342/13) with included accessories.

IMPORTANT SAFETY INFORMATION

Always follow basic safety precautions when using electrical appliances. This appliance is not intended for use by persons with reduced physical, sensory or mental capabilities, or lack of experience and knowledge, unless they have been given supervision or instruction concerning use of the appliance by a person responsible for their safety. Children should be supervised to ensure that they do not play with the appliance.

- Do not use the appliance if it is damaged.
- Keep the appliance dry, except when using it for wet shaving.
- Do not immerse the appliance in water.
- Only use the charging cable provided.
- Do not use the shaver while it is charging.
- For hygiene reasons, the shaver should only be used by one person.

PRODUCT COMPONENTS

Your Philips Shaver Series 3000 (S3342/13) package includes the following items:

- Philips Electric Shaver Series 3000
- Protective Cap
- Travel Pouch

- Charging Stand
- USB-A Charging Cable (Power adapter not included)



Image: Shaver with USB charging cable.

SETUP AND CHARGING

1. **Initial Charge:** Before first use, fully charge the shaver. Connect the USB-A charging cable to the charging stand and then

to a compatible USB power adapter (not included). Place the shaver in the charging stand.

2. **Charging Indicator:** The battery indicator lights on the shaver will show the charging progress. A full charge takes approximately 1 hour and provides up to 60 minutes of shaving time.
3. **Quick Charge:** If the battery is low and you need a quick shave, a 5-minute quick charge provides enough power for one shave.
4. **Power Adapter:** Use a certified USB power adapter (e.g., a smartphone charger) with a voltage output suitable for USB devices.

OPERATING INSTRUCTIONS

Shaving

The Philips Shaver Series 3000 is designed for both wet and dry shaving. Choose the method that suits your preference.

Dry Shaving

- Ensure your face is clean and dry.
- Press the on/off button to start the shaver.
- Move the shaver in small, circular motions over your skin.
- Apply gentle pressure.



Image: Man dry shaving with the Philips Shaver Series 3000.

Wet Shaving

- You can use shaving foam or gel, or even shave in the shower.
- Apply foam or gel to your face.
- Press the on/off button to start the shaver.
- Move the shaver in small, circular motions over your skin.
- Rinse the shaving heads under running water during shaving to prevent clogging.

Shave wet or dry, with foam, gel or even in the shower



Image: Demonstrating wet and dry shaving with the Philips Shaver Series 3000.

SkinProtect Technology and 5D Pivot & Flex Heads

The shaver's 5D Pivot & Flex heads are designed to follow the contours of your face, ensuring close contact and a comfortable shave while protecting your skin from nicks and cuts. The PowerCut blades are self-sharpening and cut hair just above skin level for a smooth finish.

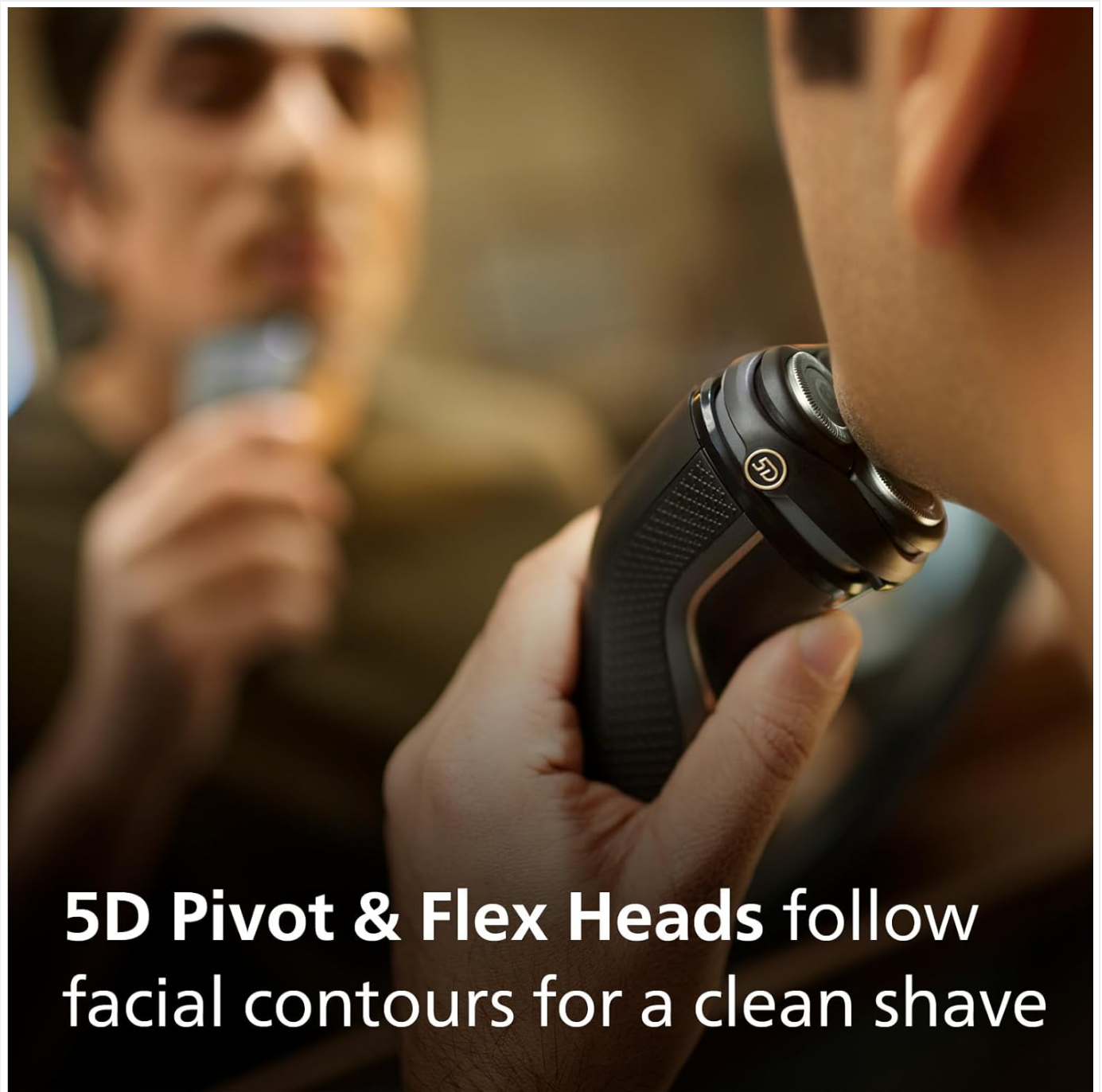


Image: 5D Pivot & Flex heads adapting to facial contours for a close shave.



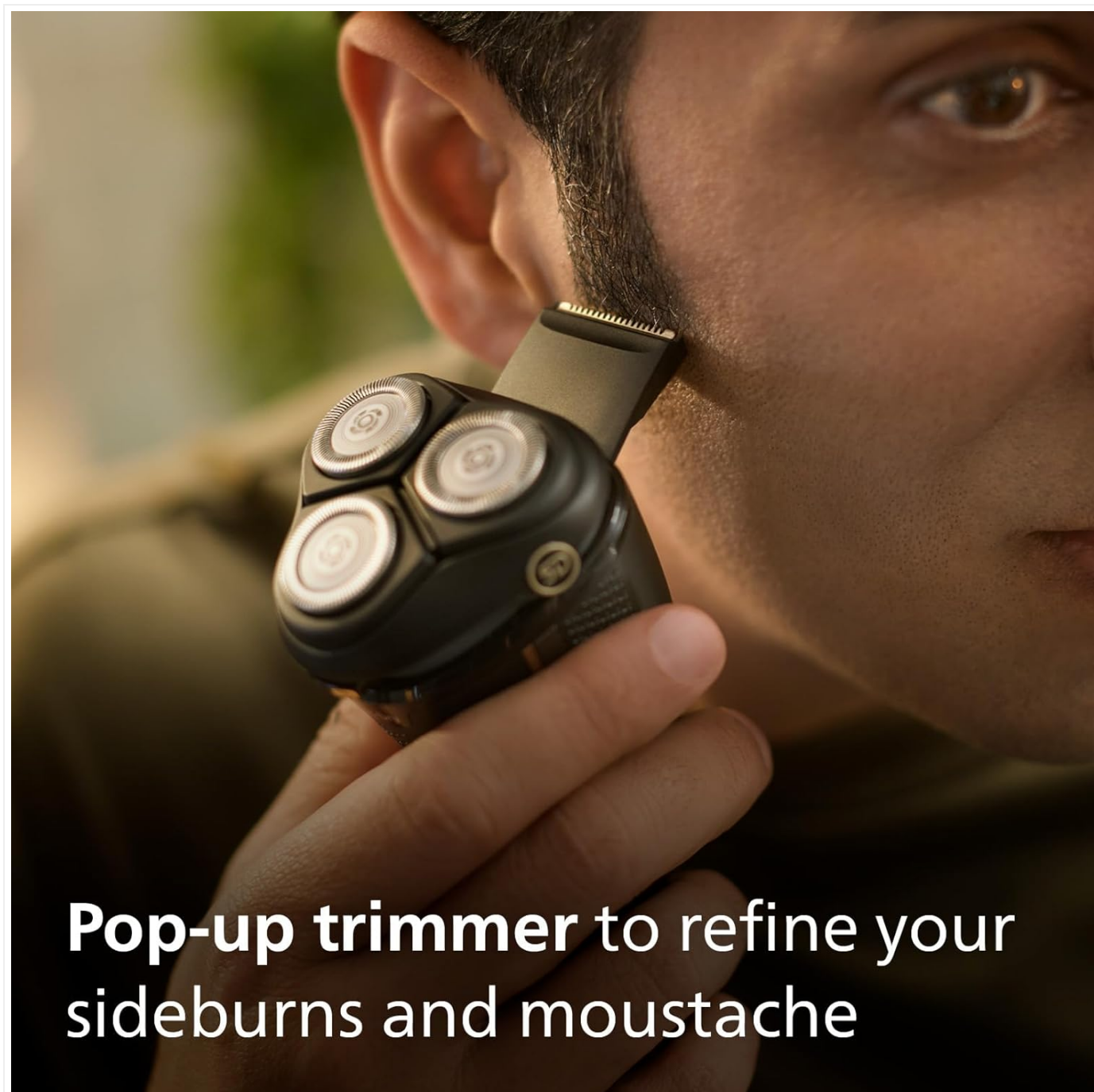
PowerCut Blades for a comfortable, clean shave

Image: Close-up of PowerCut blades.

Using the Pop-up Trimmer

The integrated pop-up trimmer is ideal for maintaining your mustache and sideburns.

1. Slide the trimmer release button upwards to activate the trimmer.
2. Use the trimmer to shape and define your facial hair.
3. Slide the button downwards to retract the trimmer when finished.



Pop-up trimmer to refine your sideburns and moustache

Image: Using the pop-up trimmer for sideburns.

MAINTENANCE AND CLEANING

Regular cleaning ensures optimal performance and extends the lifespan of your shaver.

1. **Daily Cleaning:** After each use, especially after wet shaving, rinse the shaver head under warm running water.
2. **Deep Cleaning:** Once a week, or as needed, open the shaver head by pressing the release button. Rinse the inside of the shaving unit and the hair chamber thoroughly under running water.
3. **Drying:** Shake off excess water and allow the shaver to air dry completely before attaching the protective cap or storing it.
4. **Blade Replacement:** The self-sharpening PowerCut blades are designed to last up to 2 years. For continued optimal performance, replace the shaving heads every two years. Replacement heads can be purchased from authorized Philips retailers.

TROUBLESHOOTING

If you encounter issues with your shaver, refer to the following common solutions:

Problem	Possible Cause / Solution
Shaver does not turn on.	Battery may be depleted. Charge the shaver for at least 5 minutes for a quick shave, or 1 hour for a full charge. Ensure the charging cable is properly connected.
Poor shaving performance / pulling hairs.	<ul style="list-style-type: none">• Shaving heads may be dirty. Clean the shaver thoroughly.• Shaving heads may be worn out. Replace shaving heads every 2 years.• Battery may be low. Charge the shaver.
Shaver does not charge.	<ul style="list-style-type: none">• Check if the USB-A charging cable and charging stand are correctly connected to a working power adapter and outlet.• Ensure the shaver is properly seated in the charging stand.• The charging cable or stand might be damaged.

SPECIFICATIONS

Feature	Detail
Model Number	S3342/13
Shaving System	PowerCut Blades, 5D Pivot & Flex Heads
Shaving Type	Wet & Dry
Power Source	Rechargeable Battery (Li-ion)
Battery Life	Up to 60 minutes cordless shaving
Charging Time	1 hour for full charge, 5-minute quick charge
Blade Material	Stainless Steel
Special Feature	SkinProtect Technology, Pop-up Trimmer
Color	Black
Dimensions (Package)	19.3 x 14.1 x 8.4 cm
Weight (Package)	490 grams
Country of Origin	Netherlands

WARRANTY AND SUPPORT

Philips products are manufactured to the highest quality standards. This product is covered by a standard manufacturer's warranty. For detailed warranty information, product registration, or technical support, please visit the official Philips website or contact their customer service in your region.

Official Philips Support: www.philips.com/support



