

usogood TC80

usogood 4K 48MP WiFi Trail Camera User Manual

Model: TC80

1. INTRODUCTION

Thank you for choosing the usogood 4K 48MP WiFi Trail Camera. This device is designed for outdoor wildlife monitoring, offering high-resolution images and videos with advanced features like night vision and motion detection. Its robust, waterproof design ensures reliable performance in various environmental conditions. This manual provides detailed instructions for setting up, operating, and maintaining your trail camera to ensure optimal performance and longevity.

2. WHAT'S IN THE BOX

Please check the package contents to ensure all items are present:

- Trail Camera (1 unit)
- Instruction Manual (1 unit)
- Mounting Belt (1 unit)
- USB Cable (1 unit)
- Threaded Tripod and Screw Accessories (1 set)

3. SETUP

3.1 Power Source Installation

The usogood TC80 trail camera requires 8x 1.5V AA batteries (not included) or an external 6V/2A DC power supply (not included). For battery installation:

- Open the camera casing.
- Locate the battery compartment.
- Insert 8x AA batteries, ensuring correct polarity (+/-).
- Close the battery compartment securely.



Image: Proper battery installation in the camera's compartment.

3.2 Memory Card Insertion

The camera supports a maximum of 64GB SD card (not included). Ensure the SD card is formatted before first use.

1. With the camera powered off, open the casing.
2. Insert the SD card into the designated slot until it clicks into place.
3. Close the camera casing.

3.3 Mounting the Camera

The camera can be mounted using the included mounting belt or threaded tripod accessories. It is designed for tree mounting.

- **Tree Mount:** Use the provided mounting belt to secure the camera to a tree trunk. Adjust the angle for optimal coverage.
- **Tripod Mount:** Attach the camera to a standard tripod using the threaded tripod accessory for more precise positioning.

3.4 Wi-Fi Connection and App Control

The camera features Wi-Fi connectivity for easy viewing and downloading of media via a smartphone app. Note that this Wi-Fi is a direct peer-to-peer connection between the camera and your smartphone, not a connection to your home Wi-Fi network. The effective Wi-Fi distance is approximately 20 meters (65 feet).

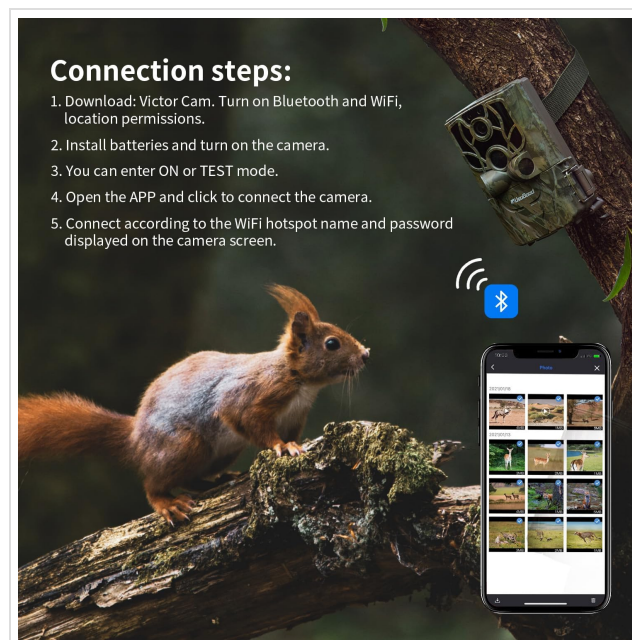


Image: Steps for connecting the camera to the smartphone app.

1. **Download App:** Download the "Victor Cam" app from your smartphone's app store (Google Play for Android, App Store for iOS).
2. **Enable Permissions:** Ensure Bluetooth, Wi-Fi, and location permissions are enabled on your phone for the app.
3. **Power On Camera:** Install batteries and turn the camera on. You can enter ON or TEST mode.
4. **Connect via App:** Open the "Victor Cam" app and click to connect to the camera.
5. **Wi-Fi Hotspot:** Connect your smartphone to the camera's Wi-Fi hotspot. The Wi-Fi hotspot name (e.g., CAMERA-XXXXX) and default password (12345678) will be displayed on the camera screen.

4. OPERATION

4.1 Capture Modes

The camera offers three capture modes: Photo, Video, and Photo + Video. These settings can be configured via the camera's internal menu or the smartphone app.

4.2 Image and Video Resolution

The camera records 48MP high-definition pictures and clear 4K video footage. During the day, recordings are in full color, while night recordings are in black and white.

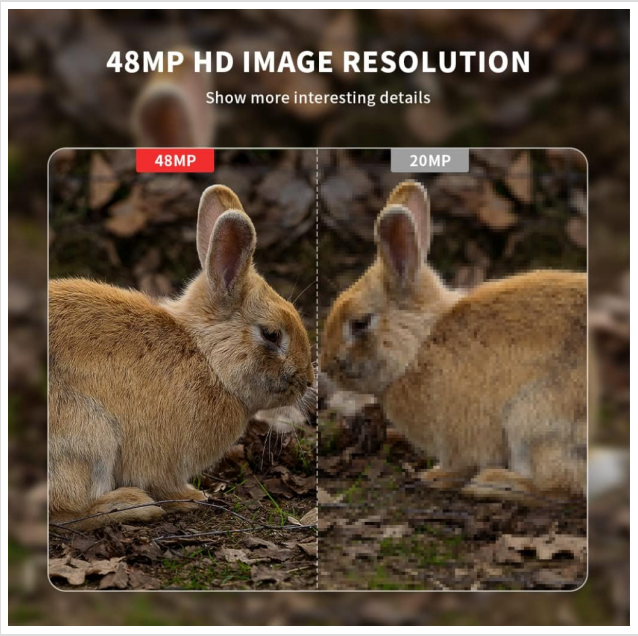


Image: Detail comparison of 48MP image resolution.

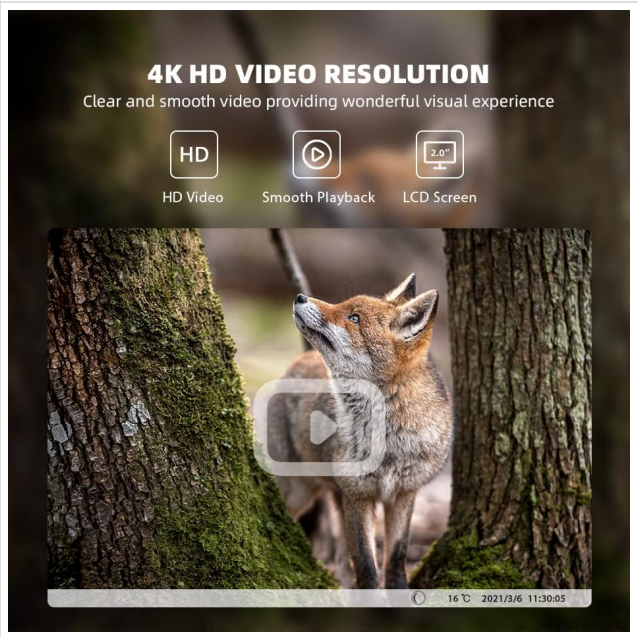


Image: Representation of 4K HD video resolution.

4.3 Super Night Vision

Equipped with 36pcs 850nm low-glow IR LEDs, the camera provides clear night vision without overexposing or startling wildlife. This ensures discreet monitoring in dark environments.



Image: Comparison of night vision capabilities.

4.4 Motion Detection and Trigger Speed

The camera features 3 independent PIR motion detectors with a 0.3-second trigger speed and a 120° wide detection angle. The effective detection range is up to 20 meters (65 feet). For specific monitoring areas, you can turn off the side PIR sensors to narrow the shooting area and conserve power.



Image: Demonstration of fast trigger speed.

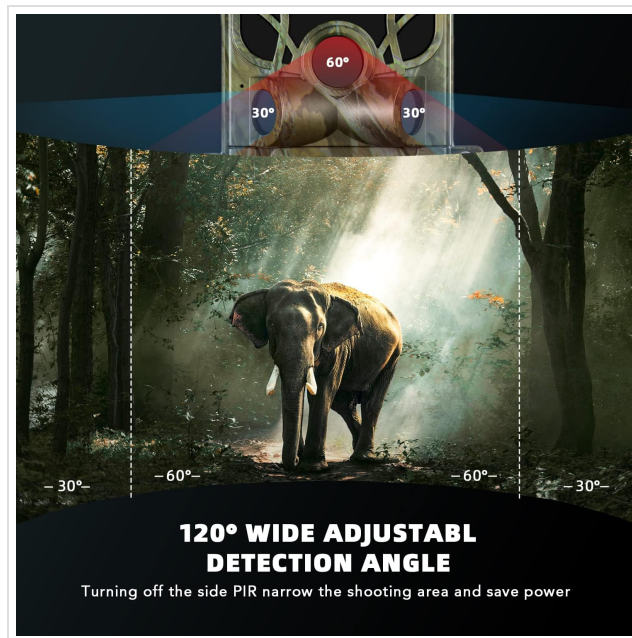


Image: Illustration of the 120° wide detection angle.

4.5 Data Management

When the memory card is full, the camera will automatically overwrite the oldest files to continue recording, ensuring continuous monitoring without manual intervention.

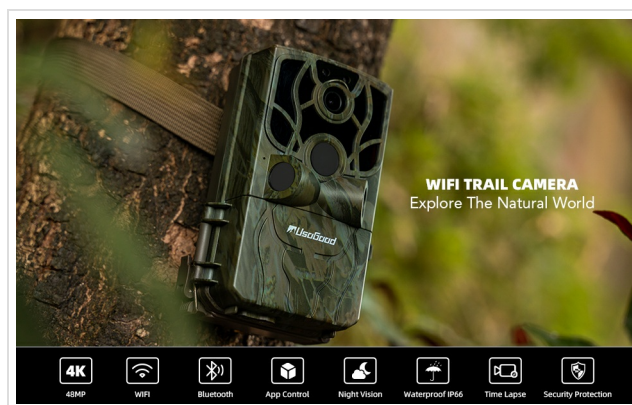


Image: Overview of additional camera features, including automatic overwriting.

5. MAINTENANCE

5.1 Waterproof Design

The usogood TC80 camera has an IP66 waterproof rating, featuring good sealing material. This allows it to operate normally in rainy or snowy conditions, and within a temperature range of -20°C to 60°C (-4°F to 140°F).

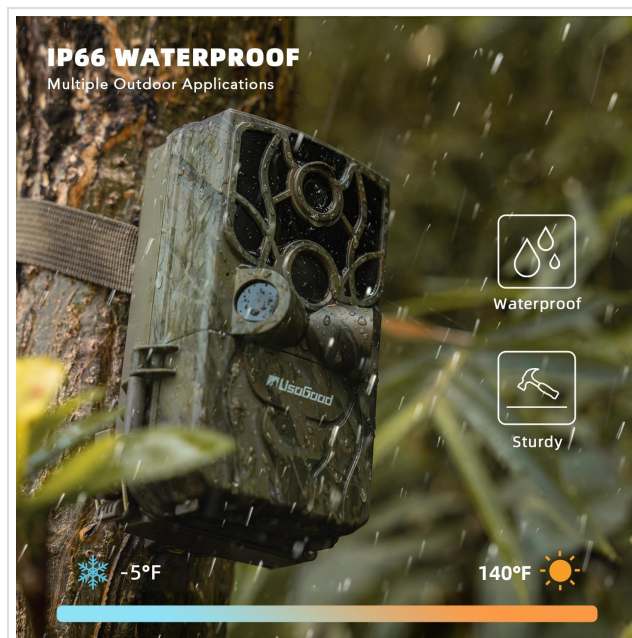


Image: The camera's IP66 waterproof capability.

5.2 Cleaning and Storage

- Wipe the camera exterior with a soft, damp cloth. Avoid abrasive cleaners.
- Ensure the lens and PIR sensors are clean for optimal performance.
- When storing for extended periods, remove batteries to prevent leakage.

6. TROUBLESHOOTING

6.1 Common Issues and Solutions

Problem	Possible Cause	Solution
Camera not powering on	Low or dead batteries; incorrect battery polarity; external power issue.	Replace batteries; check battery orientation; verify external power supply (6V/2A).
No images/videos captured	PIR sensitivity too low; detection angle obstructed; memory card full or faulty.	Increase PIR sensitivity; clear obstructions; format or replace SD card.
Poor night vision quality	IR LEDs obstructed; object too far or too close.	Ensure IR LEDs are clear; adjust camera distance to subject.
Wi-Fi connection issues	Out of range; incorrect Wi-Fi password; app permissions.	Move closer to camera (within 20m); re-enter password; check app permissions (Bluetooth, Wi-Fi, Location). Remember, it's a direct connection, not to home Wi-Fi.
SD card error/looping	Incompatible SD card adapter (if using microSD); faulty SD card.	Try a different SD card adapter or a full-size SD card; format the SD card.

6.2 Customer Support

If you encounter any issues not covered in this manual or require further assistance, please contact our customer service team. We are committed to resolving your problems within 48 hours.

7. SPECIFICATIONS

Feature	Specification
Model Name	TC80
Effective Still Resolution	48 MP
Video Capture Resolution	4K
Frame Rate	30 frames_per_second
Detection Angle	120°
Trigger Speed	0.3 seconds
Detection Range	Up to 20m (65ft)
Night Vision	36pcs 850nm low glow IR LEDs
Display	2.0-inch color LCD screen
Connectivity	Supports hotspot WiFi (peer-to-peer, not home network)
Power Source	8x 1.5V AA batteries or external 6V/2A DC power supply
Memory Card Support	Up to 64 GB Flash Memory
Water Resistance	IP66
Operating Temperature	-20°C to 60°C (-4°F to 140°F)
Dimensions (L x W x H)	3.38 x 3.38 x 3.98 inches
Weight	1.46 pounds
Material	Acrylonitrile Butadiene Styrene (ABS)
Manufacturer	usogood
Country of Origin	China

8. WARRANTY AND SUPPORT

8.1 Product Protection

Your usogood trail camera is covered by a 2-year protection plan, providing repair services within this period. Additionally, a 3-month return policy is in place to ensure your satisfaction with the product quality.

8.2 Customer Service

For any inquiries, technical support, or warranty claims, please contact our dedicated customer service team. We aim to respond and resolve your concerns within 48 hours.

Documents - usogood – TC80



[\[pdf\]](#) User Manual

UsoGood TC80 20230829 OL User Manual usogood 4K 48MP Wildlife Camera WiFi Bluetooth with Night Vision Motion Activated IP66 Waterproof Trail 60° 120° Sensor for Monitoring Amazon.co.uk Sports Outdoors D1rS83R4bSL m media amazon images I |||

...

lang: score:18 filesize: 8.5 M page_count: 28 document date: 2023-09-18

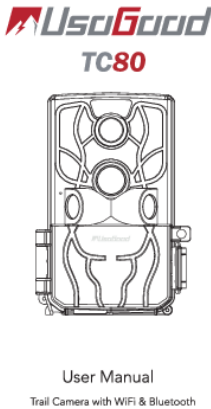


[\[pdf\]](#)

UsoGood TC80 20230829 OL Manuale utenteusogood 4K 48MP Fototrappola WiFi per Caccia e Videosorveglianza Notturna con Infrarossi Invisibili 850nm Impermeabile IP66 8 Batterie AA 32GB Scheda di Memoria Amazon.it Sport tempo liberoD1rS83R4bSLm media amazon images I D1rS83R4bSL ref dp product quick view |||

...

lang: score:14 filesize: 8.5 M page_count: 28 document date: 2023-09-18



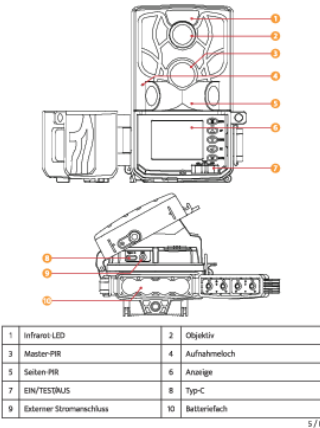
[\[pdf\]](#) User Manual

DOWNLOAD Wifi Trail Camera TC80 usogood TC80Manual v 1688379855 cdn.shopify.s/files/1/0721/5520/1820 |||

...

lang: score:14 filesize: 4.51 M page_count: 26 document date: 2023-07-03

1. Camera icon



[pdf] User Manual

Type c OTTO Scannen Sie den QR Code unten um die „ TrailCam Go App für usogood TC80 Kamera herunterzuladen Klicken auf der Popup Seite „Herunterladen 64872ee4 0178 4244 b8df dd08a0608101 d otto de files |||

...

lang: score:10 filesize: 17.38 M page_count: 4 document date: 0000-00-00

[pdf]

1 Icône de caméra Scannez le code QR ci dessous pour télécharger l application «TrailCam Go» la usogood TC80 Cliquez sur page contextuelle et A1YV99xY1AL ref dp product quick view m media amazon images l |||

...

lang: score:10 filesize: 1.04 M page_count: 4 document date: 0000-00-00

[pdf] User Manual

1 Camera icon Scannen Sie den QR Code unten um die „ TrailCam Go App für usogood TC80 Kamera herunterzuladen Klicken auf der Popup Seite „Herunterladen A1AFICtCaWL ref dp product quick view m media amazon images l |||

...

lang: score:10 filesize: 1.09 M page_count: 4 document date: 0000-00-00