

Nelko P21

Nelko P21 Bluetooth Label Maker User Manual

Model: P21

Brand: Nelko

INTRODUCTION

The Nelko P21 Bluetooth Label Maker is a compact, wireless, and inkless thermal printer designed for efficient labeling in various environments, including home, office, and school. Its portable design allows for convenient use anywhere, providing clear and high-definition labels without the need for ink or toner. This manual provides detailed instructions for setup, operation, maintenance, and troubleshooting to ensure optimal performance of your device.

PRODUCT FEATURES

- **Compact and Portable:** Half the weight and size of traditional label makers, designed for easy portability.
- **Inkless Thermal Printing:** Utilizes BPA-Free Direct Thermal Technology, eliminating the need for ink or toner.
- **High-Quality Output:** Equipped with high-speed chips and 203 DPI resolution for clear, high-definition monochrome printouts.
- **Wireless Connectivity:** Compatible with iOS and Android smartphones via Bluetooth connection through the dedicated "Nelko" APP.
- **Rechargeable Battery:** Built-in durable rechargeable battery for long-lasting operation.
- **Extensive Customization:** The Nelko APP offers over 90 fonts, 10+ languages, and 450+ materials/templates for diverse label designs.
- **Fixed Label Sizes:** Supports fixed label lengths including 12x40mm, 14x40mm, 14x50mm, and 14x75mm. (Note: Continuous label tapes are not supported).
- **Built-in Cutter:** For easy and precise label cutting after printing.

WHAT'S IN THE BOX

- 1 x NELKO P21 Label Maker
- 1 x User Manual
- 1 x USB Type-C Cable
- 1 x Roll label tape/15x40mm (pre-installed inside the label maker)
- 1 x Guide Card

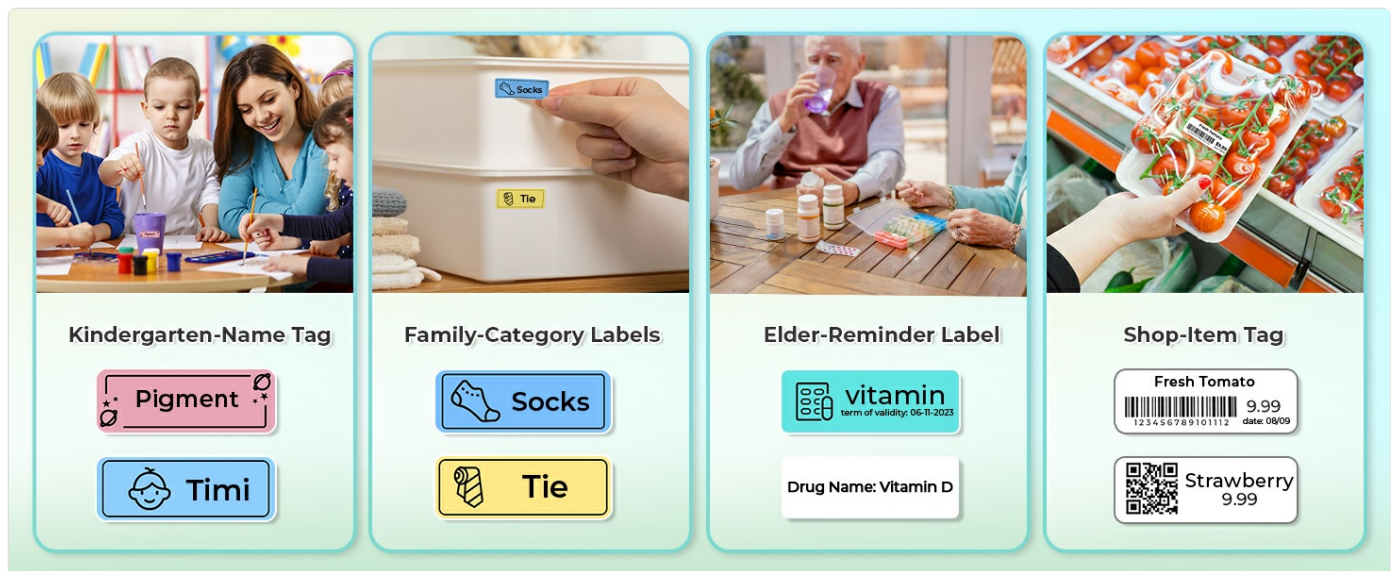
1. Charging the Device

Before first use, fully charge the Nelko P21 label maker using the provided USB Type-C cable. Connect the cable to the device and a standard USB power adapter (not included). The indicator light will flash green during charging and turn steady green when fully charged. Avoid using fast charging adapters.

2. Installing the Label Roll

The label maker comes with one roll of label tape pre-installed. To install or replace a label roll:

1. Slide the cover button to the other side to open the cover of the label maker.
2. Load the new paper roll into the paper bin, ensuring it is correctly oriented as indicated by the arrow on the roll.
3. Unroll the paper enough so that approximately 2-3 cm of paper extends outside the printer.
4. Close the cover securely. Double-click the power button to calibrate the paper, or press the power button once to print a test page.



Visual guide for installing the label tape. Ensure the paper is fed correctly and the cover is closed.

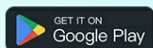
3. App Download and Bluetooth Connection

The Nelko P21 operates via a dedicated mobile application. Follow these steps to connect your device:

1. Download the "Nelko" APP from Google Play Store (for Android) or Apple App Store (for iOS).
2. Ensure Bluetooth is enabled on your smartphone.
3. Open the "Nelko" APP. The app will automatically search for nearby devices. Click on the "Unconnected" status in the upper left corner to initiate the connection.
4. Select "P21" from the list of available devices to connect. Once connected, the indicator light on the label maker will turn steady blue.



Wireless Bluetooth Connection



Warm Tips:

1. IOS Cmpatibility: The IOS operating system version of Nelko APP must be IOS 13.0 or later.
2. Android Cmpatibility: The Android operating system version of Nelko APP must be Android 7.0 or later.

Connecting your Nelko P21 to the mobile app for wireless printing.

Your browser does not support the video tag.

Watch this official tutorial video for a step-by-step guide on operating the Nelko P21 Label Maker, including app usage and printing.

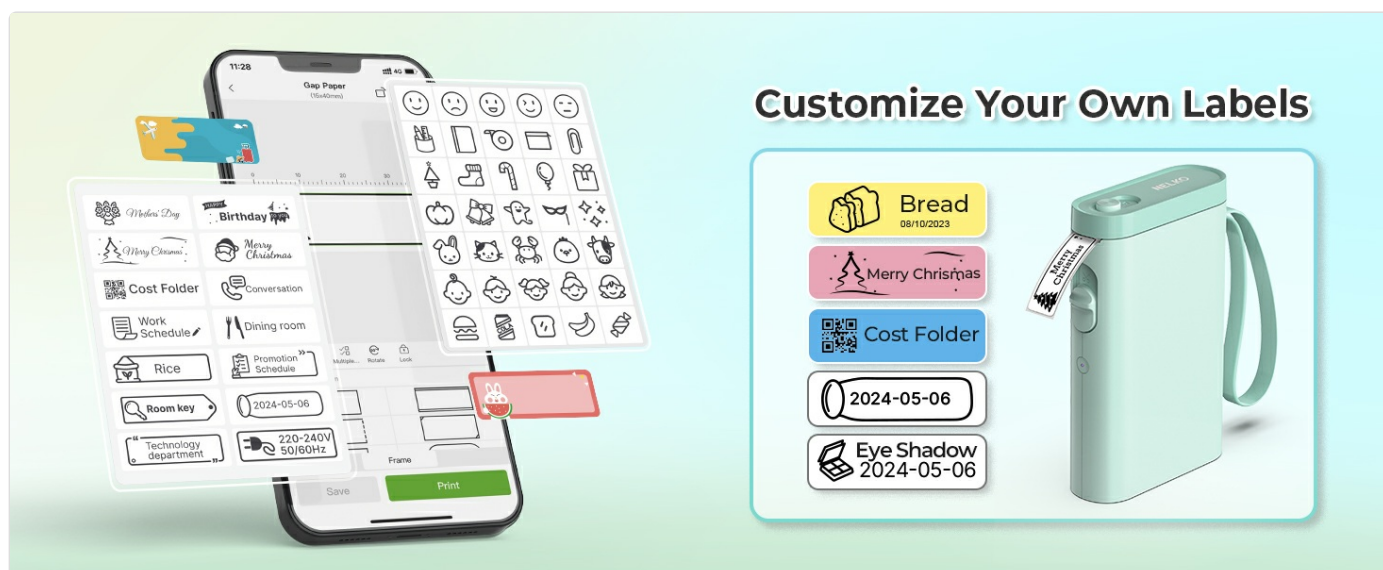
OPERATING INSTRUCTIONS

1. Creating and Editing Labels

The Nelko APP provides a wide range of options for creating customized labels:

- **Templates:** Choose from over 450 pre-designed templates for various purposes.
- **Text:** Input custom text with over 90 font styles and adjustable sizes.
- **Icons & Materials:** Add icons, images, QR codes, barcodes, and decorative materials to your labels.
- **Borders & Frames:** Select from various borders and frames to enhance your label design.
- **Languages:** Supports over 10 languages for text input.

To edit content, double-click on the desired area within the template. You can also tap the "+" icon to create a blank label and start from scratch.



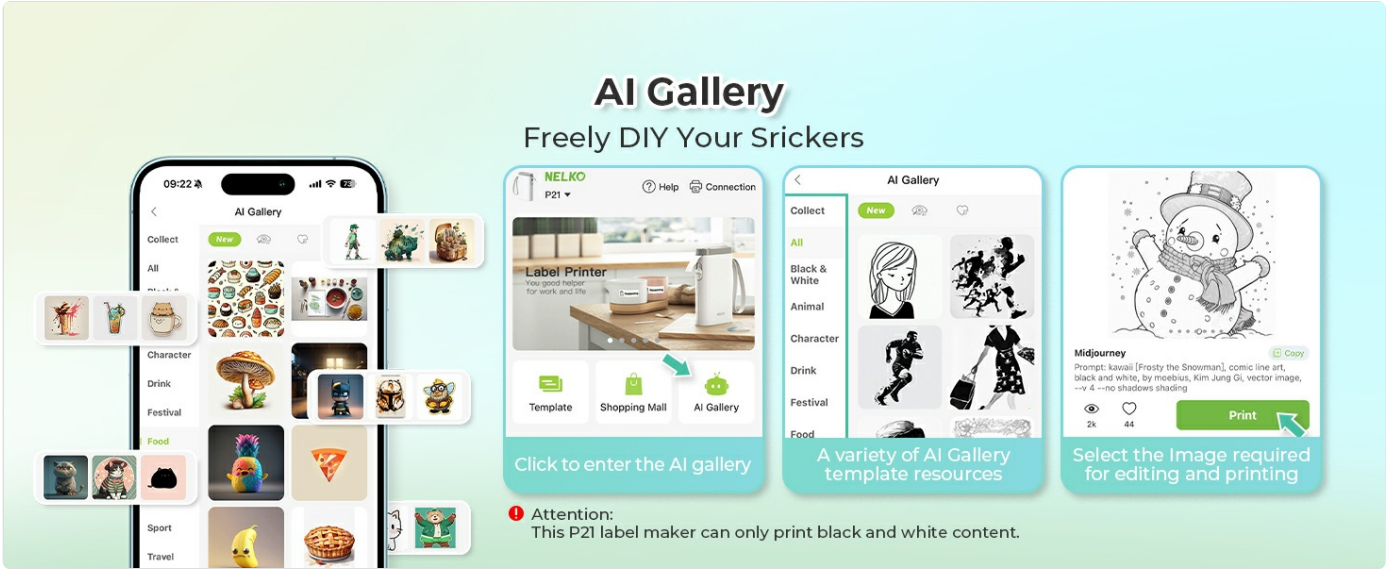
Customize Your Own Labels

Explore a variety of templates and customization options within the Nelko app.

2. Printing Labels

Once your label design is complete:

- 1. Review your label design in the app's preview.
- 2. Select the desired number of copies.
- 3. Click the "Print" button in the app. The label maker will print your labels at a high speed of 30mm/s with 203 DPI clarity.
- 4. Use the built-in cutter on the side of the device to cleanly separate the printed label from the roll.



The Nelko P21 uses thermal printing for fast and clear label output.

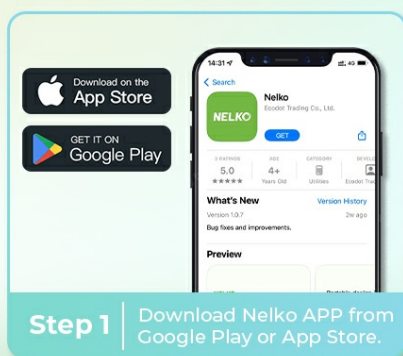
3. Indicator Light Meanings

The LED indicator light on your Nelko P21 provides important status information:

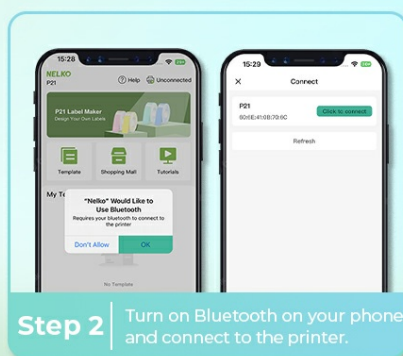
Light Status	Meaning
Flash Green	Charging
Steady Green	Fully Charged
Flash Red	Print head overheat or low battery
Steady Red	Cover is open or out of paper
Steady Blue	Successfully connected to Bluetooth

How to connect Label Printer

Note: Refer to the manual for detailed operation steps.



Step 1 | Download Nelko APP from Google Play or App Store.



Step 2 | Turn on Bluetooth on your phone and connect to the printer.



Step 3 | Edit the labels you need and print.

Understand your device's status at a glance with the indicator light.

MAINTENANCE AND CARE

- **Cleaning:** Regularly wipe the exterior of the device with a soft, dry cloth. Do not use harsh chemicals or abrasive materials.
- **Print Head Care:** Avoid touching the print head directly. If print quality degrades, gently clean the print head with an alcohol swab.
- **Label Roll Handling:** Do not tear or damage the green sticker on the back of the label strip, as this can affect printing performance.
- **Storage:** Store the label maker in a cool, dry place away from direct sunlight and extreme temperatures.
- **Battery:** To prolong battery life, avoid fully discharging the device frequently. Charge it when the low battery indicator (Flash Red) appears.

TROUBLESHOOTING

If you encounter issues with your Nelko P21, refer to the table below for common problems and solutions:

Problem	Possible Cause	Solution
Device does not turn on	Low battery	Charge the device fully.
Cannot connect via Bluetooth	Bluetooth off, app not updated, device not discoverable	Ensure Bluetooth is on. Update Nelko APP to the latest version (V3.1.0 for iOS users, iOS 13.0+ required). Restart device and app. Note: Not compatible with Google phones on Android 14.
Poor print quality (faint/blurry)	Print head dirty, incorrect label type, low battery	Clean the print head. Ensure you are using Nelko thermal label paper. Charge the device.
No paper feeding/printing	Cover open, out of paper, paper jammed	Check if the cover is closed properly. Replace label roll. Clear any paper jams.
Labels are not fixed length	Attempting to use continuous label tapes	This label maker only supports fixed-length labels. Continuous label tapes are not supported.

PRODUCT SPECIFICATIONS

Specification	Detail
Model Name	P21
Brand	Nelko
Product Dimensions	6.65"D x 1.9"W x 4.5"H (16.9 x 4.8 x 11.4 cm)
Item Weight	10.8 ounces (306 grams)
Printing Technology	Thermal
Max Print Resolution	203 DPI
Max Print Speed (Monochrome)	30 mm/s
Connectivity Technology	Bluetooth
Compatible Devices	Smartphones (iOS & Android)
Control Method	App
Power Source	Rechargeable Battery (1 A battery included)
Maximum Media Size	14x75mm

WARRANTY AND SUPPORT

- Nelko is committed to providing high-quality products and a positive user experience. For any questions, technical assistance, or support regarding your Nelko P21 Label Maker, please refer to the following resources:
- **User Manual (PDF):** A detailed PDF user manual is available for download at <https://manuals.plus/m/1d5cce7120c461b270cbea9d7076d6592d7867250c5a010fc214cef14536c405>.
 - **User Guide (PDF):** An additional user guide is available at <https://manuals.plus/m/d682304aca80644399e29f77ad2617d4da3b89e6e9087f5f228053009336a584>.
 - **Return Policy:** This product is eligible for a refund or replacement within 30 days of purchase, as per Amazon's return policy.
 - **Manufacturer Support:** For further assistance, please contact Nelko customer support through the contact information provided in your product packaging or on the official Nelko website.

© 2025 Nelko. All rights reserved.

Related Documents - P21

	<p>Nelko P21 Bluetooth Label Maker: Quick Start Guide for Printing Labels</p> <p>Learn how to use the Nelko P21 portable Bluetooth label maker. This guide covers app installation, device connection, label design, and printing via your smartphone.</p>
	<p>Nelko P21 Label Maker: Common Questions and Troubleshooting Guide</p> <p>A comprehensive FAQ and troubleshooting guide for the Nelko P21 label maker, covering common issues such as printer connectivity, print quality, app usage, and network settings.</p>
	<p>Nelko P21 Portable Label Maker User Manual</p> <p>User manual for the Nelko P21 portable label maker, providing instructions on setup, operation, specifications, troubleshooting, and warranty information.</p>
 <p>Portable Label Maker Read thoroughly before using</p> <p>Thanks for choosing P21 printer</p>	<p>NELKO P21 Portable Label Maker User Guide</p> <p>Comprehensive user manual for the NELKO P21 portable label maker, covering setup, app connection, label creation, printing, troubleshooting, and warranty information.</p>
 <p>Portable Label Maker Read thoroughly before using</p> <p>Thanks for choosing P21 printer</p>	<p>NELKO P21 Portable Label Maker User Guide</p> <p>A comprehensive guide to using the NELKO P21 portable label maker, covering setup, app connection, label creation, and printing. Learn how to design and print custom labels for various organizational needs.</p>
	<p>NELKO P21 Portable Label Maker User Manual and Specifications</p> <p>Comprehensive guide for the NELKO P21 Portable Label Maker, covering setup, operation, troubleshooting, technical specifications, and safety guidelines.</p>