



Manuals.plus /

- › Eurotech Showers /
- › Monaco 56.5-60" W x 78" H 3/8" Twinglide Frameless Shower Door User Manual

## Eurotech Showers MONA5978-RTB-MB

# Monaco 56.5-60" W x 78" H 3/8" Twinglide Frameless Shower Door User Manual

Brand: Eurotech Showers | Model: MONA5978-RTB-MB

## PRODUCT OVERVIEW

---

The Eurotech Showers Monaco Twinglide Frameless Shower Door is designed to elevate your bathroom with its innovative design and superior quality. Featuring heavy-duty 3/8" (10mm) Rain tempered safety glass and full 304 stainless hardware, this shower door ensures durability and a sleek appearance. Its adjustable width allows it to fit spaces between 56.5" to 60" wide, offering versatility for various shower areas. The double sliding bypass configuration provides convenient entry from either the left or right side.

Key features include:

- **Adjustable Width:** Fits spaces from 56.5" to 60" wide, with a walk-in width of 24.875" to 26.625".
- **Tall Door Height:** Industry-leading 78" height, providing a spacious walk-in height of 73.25" (6' 1").
- **Superior Strength and Durability:** Anodized aluminum top track and full 304 stainless hardware for long-lasting performance.
- **Smooth and Silent Operation:** Equipped with dual-sided 45mm rollers.
- **Adjustable Out of Plumb:** Up to 3/8" (10mm) adjustability for non-level curbs or non-vertical wall conditions.
- **Efficient Water Management:** Dual water diverter sets (aluminum and polycarbonate) to minimize spills.
- **Safety Glass:** Heavy-duty 3/8" (10mm) Rain tempered safety glass for privacy and protection.
- **Easy to Clean:** Anti-spot nano coating on the smooth shower side reduces water spots by up to 90%.

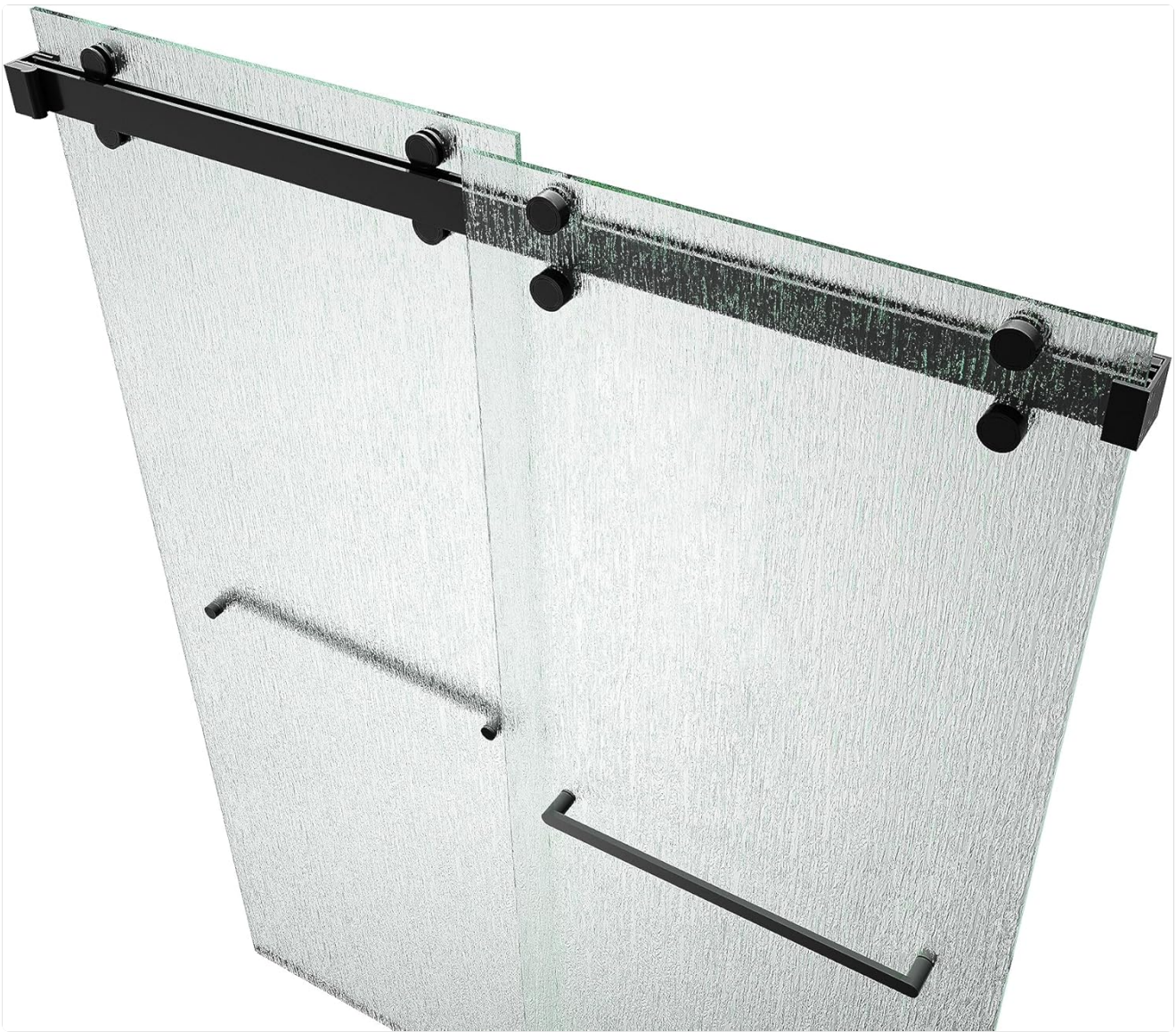


Figure 1: The Monaco Twinglide Frameless Shower Door with Tempered Rain Glass in Matte Black.

## IMPORTANT SAFETY INFORMATION

---

Please read all instructions carefully before beginning installation. Failure to follow these instructions may result in personal injury or product damage. Professional installation is recommended if you are not confident in your ability to complete the installation safely and correctly.

- Always wear safety glasses during installation.
- Tempered glass is extremely heavy and fragile at the edges. Handle with extreme care.
- Ensure the shower curb and walls are structurally sound and capable of supporting the weight of the shower door.
- Use appropriate tools and hardware for your wall type.
- Do not overtighten screws, as this may crack the glass or strip the hardware.
- Ensure proper ventilation when using sealants.

## INSTALLATION GUIDE

---

This section provides detailed instructions for the installation of your Monaco Twinglide Frameless Shower Door. For a visual guide, please refer to the official installation video below.

Your browser does not support the video tag.

Video 1: Official Monaco Shower Door Installation Guide. This video provides a comprehensive step-by-step visual walkthrough of the installation process, from initial measurements to final adjustments and sealing.

## Step-by-Step Installation Instructions:

### 1. Step 1: Site Preparation and Marking

Place marks over blue painter's tape. Find the center of the curb from the left wall to the right wall and mark it. Then, find the center of the curb depth and mark. Once marked, measure the distance from the outside of the curb to the center of the curb and transfer that measurement to the far left side/right side of the curb and mark. Draw a plumb line up the left/right wall from the marks on the curb.



Figure 2: Detailed dimensions and configurations for the Monaco shower door, illustrating the adjustable width and height.

### 2. Step 2: Confirm Curb Level

Confirm that the curb is level. If the curb is out of level, determine the high side of the curb. This is crucial for proper water drainage and door alignment.



Figure 3: Checking the shower curb for levelness. An unlevel curb may require adjustments during installation to ensure proper door function and sealing.

### 3. Step 3: Measure and Cut Track and Water Guard

Measure the required length for the top track and the aluminum water guard. Cut them according to the provided formulas: Bar Cut Formula: overall width minus  $3/4$ "; Aluminum Water Guard Cut Formula: overall width minus  $1/16$ ". Use appropriate cutting tools and wear safety gear.

## THICK $3/8$ " TEMPERED GLASS

Offers a noticeable increase in thickness and weight, providing a sense of quality that is evident when operating the door.

Added thickness provides better protection against accidental impacts and everyday wear and tear.



$5/16$ "



$3/8$ "

Figure 4: The shower door features heavy-duty  $3/8$ " (10mm) tempered glass, offering increased durability and a sense of quality compared to thinner alternatives.

### 4. Step 4: Mark and Install Wall Brackets

Mark and install the wall bracket on the high side of the curb. Level the track to mark the opposite wall. Mark and install the second wall bracket. Ensure brackets are securely fastened to wall studs or appropriate anchors.



Figure 5: Detail of the robust roller and track system, highlighting the smooth operation and secure fitting of the door panels.

#### 5. **Step 5: Install Top Rollers and Handles**

Install the top rollers and handles onto both the interior and exterior door panels. Place the interior door inside the shower on a padded surface, and the exterior door outside the shower on a padded surface to prevent damage.



Figure 6: The sleek matte black handle provides a comfortable grip and complements the modern design of the shower door.

#### 6. **Step 6: Install Track, Tighten Set Screws, and Install Wall Bracket Caps**

Install the main track onto the wall brackets. Tighten the set screws to secure the track. Finally, install the decorative wall bracket caps for a finished look.

#### 7. **Step 7: Center Bottom Guide and Install**

Center the bottom guide on the cross marks made in Step 1. Mark the holes for drilling. Drill the holes and then install the bottom guide securely to the curb.

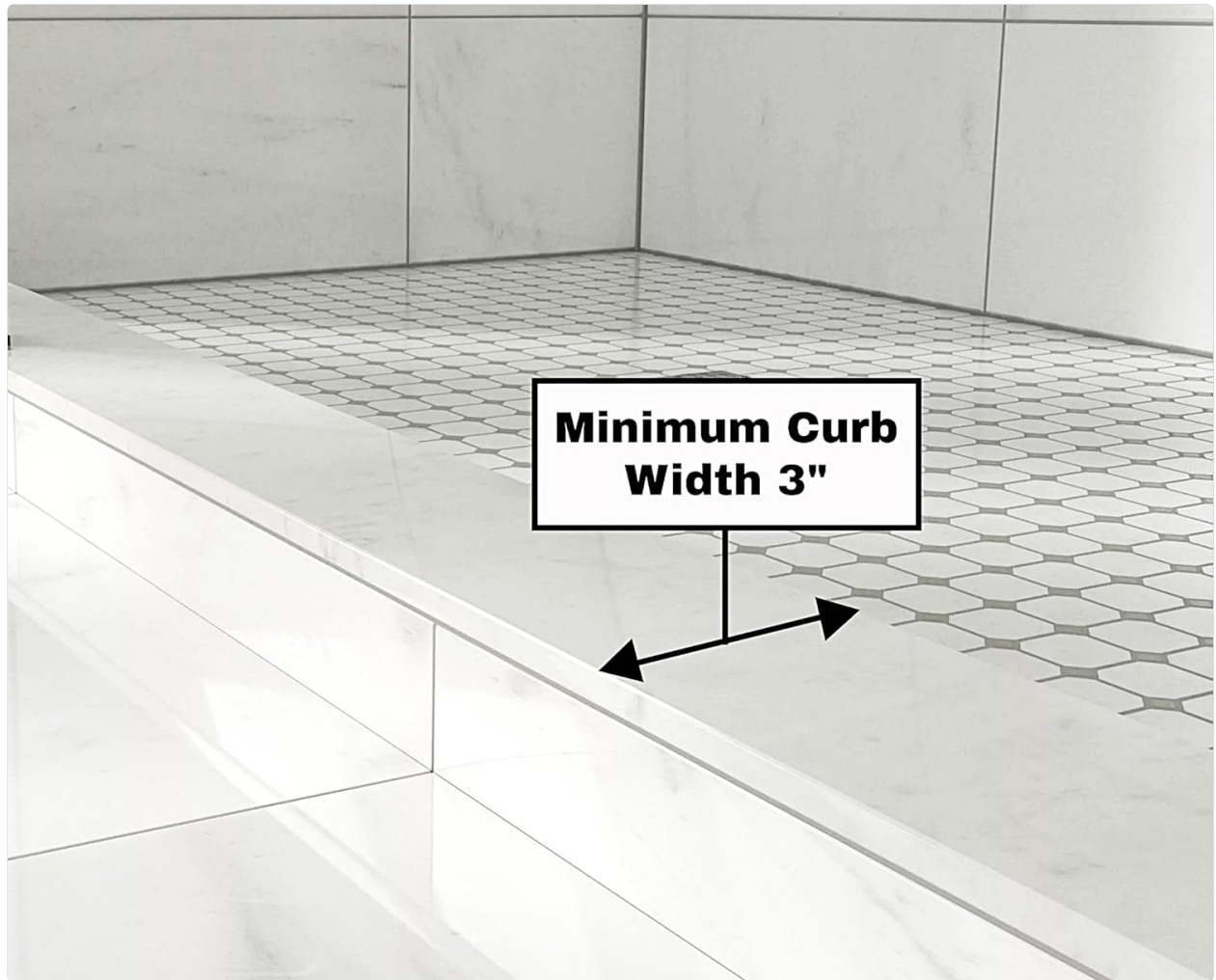


Figure 7: A minimum curb width of 3 inches is required for proper installation and stability of the shower door system.

#### 8. **Step 8: Hang Doors and Install Bottom Rollers**

Carefully hang both doors, ensuring they are hanging in the center of the opening. Install the bottom rollers onto the door panels, aligning them with the bottom guide.

#### 9. **Step 9: Install Safety Bumpers and Remaining Seals**

Install the safety bumpers on the door edges to prevent direct glass-to-glass contact. Install any remaining seals (e.g., vertical seals between panels, bottom seals) to ensure water tightness.

#### 10. **Step 10: Adjust Doors and Rollers**

Adjust the doors to ensure they are properly aligned with the walls. Adjust the bottom rollers to touch the bottom of the track, allowing for smooth and stable sliding operation.

#### 11. **Step 11: Measure and Install Aluminum Water Guard (for curbs over 4")**

For curbs over 4 inches, measure and install the aluminum water guard. Butt the aluminum water guard against the bottom guide. This helps to contain water within the shower area.

#### 12. **Step 11A: Optional Polycarbonate L-Seal (for curbs less than 4")**

For curbs less than 4 inches, an optional polycarbonate L-seal can be used. Measure and cut the L-seal to fit the length of the curb. This provides an additional barrier against water leakage.

#### 13. **Step 12: Caulking**

Apply a bead of silicone caulk around the guide and the aluminum water guard (both interior and exterior

sides) to create a watertight seal. If using the optional L-seal, caulk around the guide and the L-seal. Allow sufficient time for the caulk to cure before using the shower.

## OPERATION

---

Your Monaco Twinglide shower door features a double sliding bypass configuration, allowing you to enter or exit the shower from either the left or right side. Simply grasp the handle on the desired door panel and slide it smoothly along the top track. The dual-sided rollers ensure effortless and quiet operation.

## CARE AND MAINTENANCE

---

To maintain the pristine appearance and functionality of your shower door, regular cleaning is recommended. The heavy-duty 3/8" (10mm) Rain tempered safety glass is treated with an anti-spot nano coating on the smooth shower side, significantly reducing water spots and simplifying cleaning.

- **Daily Cleaning:** After each use, squeegee the glass to remove excess water and prevent mineral buildup.
- **Weekly Cleaning:** Use a soft cloth and a mild, non-abrasive glass cleaner. Avoid cleaners containing harsh chemicals, abrasives, or ammonia, as these can damage the nano-coating and hardware finish.
- **Hardware Care:** Wipe down metal components with a soft, damp cloth. Dry thoroughly to prevent water spots and corrosion.
- **Seal Maintenance:** Periodically check the seals for any signs of wear or damage. Replace seals if they become brittle or discolored to maintain water tightness.



Figure 8: Illustrates the effectiveness of the anti-spot nano coating, showing how water beads and rolls off the treated glass, reducing the need for extensive cleaning.

## TROUBLESHOOTING

---

Here are some common issues and their potential solutions:

- **Leaking Shower Door:**

All frameless shower doors are designed to deflect water, not retain it. High water pressure, body sprays, incorrect placement of shower heads, and improperly pitched curbs or sills can cause leaking. Ensure proper sealing during installation (refer to Step 12). Check that the bottom guide and seals are correctly installed and free from debris. Adjust door alignment if necessary.

- **Difficulty Sliding Doors:**

Check the top and bottom rollers for any obstructions or debris. Clean the tracks and rollers. Ensure the rollers are properly adjusted (refer to Step 10) and lubricated if needed with a silicone-based lubricant.

- **Glass Damage or Missing Parts:**

If you experience any issues with your order such as damage or missing parts, please do NOT refuse shipment or return it. Shipping heavy items back and forth is extremely costly and often unnecessary. Simply get in touch with Eurotech Showers Inc. directly, and they will resolve the issue quickly and efficiently by sending replacement items from their warehouse.

## PRODUCT SPECIFICATIONS

---

Specification	Detail
Brand	Eurotech Showers
Model Number	MONA5978-RTB-MB
Color	Matte Black
Material	Glass, Stainless Steel
Style	Contemporary
Item Weight	220 Pounds
Product Dimensions	0.38 x 60 x 78 inches
Assembly Required	Yes
Glass Thickness	3/8" (10mm)
Glass Type	Rain Tempered Safety Glass
Adjustable Width Range	56.5" to 60"
Walk-in Width	24.875" to 26.625"
Door Height	78"
Adjustable Out of Plumb	Up to 3/8" (10mm)

## WARRANTY AND SUPPORT

---

Your Eurotech Showers Monaco Twinglide Frameless Shower Door comes with a 1-Year Warranty. Eurotech Showers is a USA-based shower door manufacturer with 30 years of experience, committed to crafting superior quality doors and providing exceptional customer support.

For any issues, concerns, or to request replacement parts, please contact Eurotech Showers Inc. directly. They are dedicated to resolving issues quickly and efficiently to ensure your satisfaction.

- **Return Policy:** 30-day easy returns.
- **Customer Support:** Dedicated support available for any product-related concerns.