

Coxlrrso Coxlrrso 0013

Musical Boxing Machine User Manual

Model: Coxlrrso 0013 | Brand: Coxlrrso

1. INTRODUCTION

This manual provides instructions for the safe and effective use of your new Musical Boxing Machine. This smart boxing machine features 5 circular sensors and integrates music to enhance your training, improving hand-eye coordination and reaction capabilities.

Please read this manual thoroughly before operating the device and retain it for future reference.

2. IMPORTANT SAFETY INFORMATION

WARNING: To reduce the risk of injury, please observe the following precautions:

- Do not use the machine within 30 minutes after a meal.
- This product is not recommended for use during pregnancy or menstruation.
- The electronic components of this product are not waterproof. Do not wash the machine directly with water. Clean by wiping with a damp cloth.
- To prevent battery degradation, avoid overcharging the device.
- Discontinue use immediately if you experience any discomfort or feel unwell during operation.
- It is highly recommended to wear appropriate boxing gloves while using this machine to protect your hands.
- Do not attempt to disassemble or modify the product without authorization. Unauthorized disassembly may void the warranty and pose safety risks.

3. PRODUCT OVERVIEW

The Musical Boxing Machine is a wall-mounted device designed for interactive boxing training. It features multiple target points with integrated LED lighting and Bluetooth connectivity for a dynamic workout experience.

Main Unit



Image Description: This image displays a top-down view of the red Musical Boxing Machine. It is circular in shape with five black circular target pads arranged symmetrically around a central control panel. The control panel features buttons for 'Speed', 'On/Off', and 'Mode', along with a small digital display. The outer edge of the machine has a textured surface.

Key Features

- **Smart Music Boxing Target:** Equipped with 5 light strips/6 hit points that flash and display with the rhythm of the music, enhancing engagement and reaction training.
- **Flash Hit Point:** Features a built-in hit counting function and random target provocation to exercise reaction ability.
- **Wireless Bluetooth Connection:** Connects to your phone via Bluetooth for self-controlled music rhythm and dynamic workout sessions. Provides hitting sound feedback for an immersive experience.
- **Space-Saving Wall-Mounted Design:** Compact and lightweight, designed for easy wall installation, suitable for various wall types and limited spaces.

4. SPECIFICATIONS

Feature	Detail
Product Name	Smart Music Boxing Target
Brand	Coxlrrso
Model Number	Coxlrrso 0013
Color	Red
Product Material	ABS + PU
Product Power	5W
Product Weight	2 kg (4.4 lbs)
Product Size	430 x 430 x 85 mm (16.9 x 16.9 x 3.3 inches)
Installation Method	Metal screws + Velcro (adhesive pads)
Applicable Users	Training, Children, Amateur Fitness Adults

5. SETUP AND INSTALLATION

The Musical Boxing Machine is designed for easy wall mounting. Follow these steps for proper installation:

1. Prepare the Mounting Surface

Ensure the wall surface is clean, dry, and suitable for mounting. The machine can be installed using either the provided metal screws or the nano adhesive pads (Velcro).

2. Attach Adhesive Pads (Optional, for non-permanent installation)

Installation steps



- 1 Matching boxing gloves, to be purchased separately



- 2 Tear off the protective film on the surface of the nano adhesive and stick it on the back of the boxing instrument.



- 3 Tear off the other side of the nano adhesive protective film, paste the boxing machine directly on the wall or plane, and install it.

Image Description: This image illustrates the installation process using adhesive pads. It shows a hand peeling off the protective film from a nano adhesive pad on the back of the boxing machine. Another part of the image shows the machine successfully mounted on a wall, demonstrating its compact, space-saving design compared to traditional boxing bags.

- Carefully tear off the protective film from one side of the nano adhesive pad.
- Stick this side firmly onto the back of the boxing machine.
- Next, tear off the protective film from the other side of the nano adhesive pad.
- Press the boxing machine directly onto your chosen wall or flat surface, ensuring it is level and secure. Apply firm pressure for a few seconds to ensure good adhesion.

3. Secure with Metal Screws (For permanent installation)

If using screws, mark the desired mounting points on the wall using the machine's mounting brackets as a template. Drill pilot holes, insert wall anchors (if necessary for your wall type), and then secure the machine using the provided metal screws.

4. Gloves (Included)

The package includes a pair of boxing gloves. Wearing these gloves is strongly recommended to protect your hands and enhance your training experience.

6. OPERATING INSTRUCTIONS

6.1 Powering On/Off

- Press the **On/Off** button located on the central control panel to power on the device.
- Press and hold the **On/Off** button to power off.

6.2 Bluetooth Connection

Good quality in one step

<p>Intelligent Music Boxing Target</p>  <p>soft and comfortable</p>	VS	<p>Other boxing machines</p>  <p>crudely made</p>
 <p>Mute without disturbing neighbors</p>	VS	 <p>interference neighbors</p>
 <p>Convenient installation</p>	VS	 <p>Difficult to install</p>

Image Description: This image focuses on the central control area of the boxing machine, showing the Bluetooth icon and indicating its wireless connectivity. This feature allows users to connect their phone and play music, which then dictates the rhythm of the target lights.

1. Ensure the boxing machine is powered on.
2. Activate Bluetooth on your smartphone or other compatible device.
3. Search for available Bluetooth devices and select the one corresponding to your boxing machine (e.g., "Smart Boxing Target").
4. Once connected, you can play music from your device, and the boxing machine's target lights will flash in

rhythm with the music, providing an interactive workout.

6.3 Training Modes and Speed Adjustment



01 Upgrade

Upgraded Smart Music Boxing Target

5 light strips/6 hit points, the light strips flash and display with the rhythm of the music.



02 Hit Points

Flash Hit Point

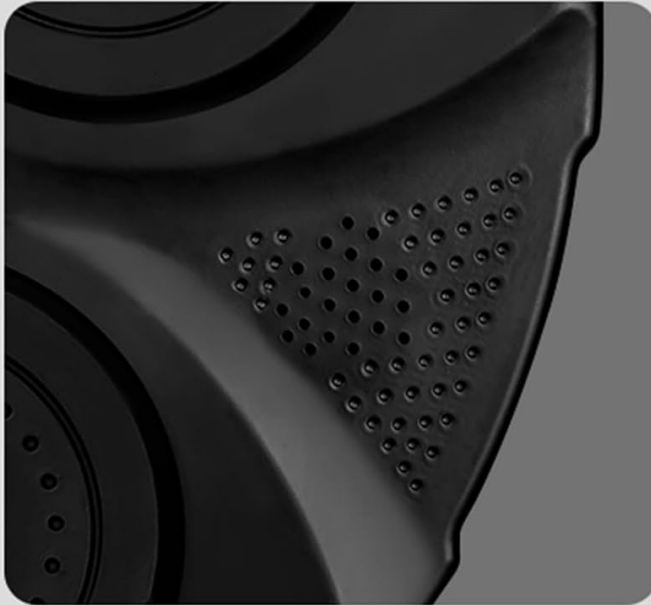
Built-in hit counting function, random provocation, exercise reaction ability.



Image Description: This image highlights the upgraded smart music boxing target, showing the five circular target pads with red LED light strips illuminating around them. This visual feedback is synchronized with music, indicating active hit points and enhancing the dynamic training experience.

- Use the **Mode** button to cycle through different training programs or patterns.
- Use the **Speed** button to adjust the speed or intensity of the target light patterns.
- The central display will show relevant information such as hit count or current mode/speed setting.

6.4 Engaging in Training



03 Bluetooth

Wireless Bluetooth Connection Self-Controlled Music Rhythm

Hitting sound feedback, bid farewell to monotonous hitting, boxing is more interesting.



Product Parameters

Product Name: Smart Music Boxing Target

Product Size: 430*430*85mm

Product Material: ABS+PU

Product Weight: 2kg

Applicable People: Home/amateur fitness adults/children

Product Power: 5w

Image Description: This image provides a close-up view of one of the boxing machine's target pads, showing its red LED light strip actively flashing. This illustrates the "Flash Hit Point" feature, which indicates where the user should strike, contributing to reaction training and hit counting.

- When a target light illuminates, strike the corresponding pad.
- The machine provides sound feedback upon a successful hit.
- Focus on accuracy and timing to improve your hand-eye coordination and reaction speed.

7. MAINTENANCE

- **Cleaning:** Wipe the surface of the boxing machine with a soft, damp cloth. Do not use abrasive cleaners or immerse the device in water.
- **Storage:** Store the machine in a cool, dry place away from direct sunlight and extreme temperatures when not in use for extended periods.
- **Battery Care:** Charge the battery regularly, even if the machine is not frequently used, to maintain battery health. Avoid leaving the battery completely discharged for long periods.

8. TROUBLESHOOTING

Problem	Possible Cause	Solution
Machine does not power on.	Battery is discharged.	Charge the machine using the provided USB cable.
Cannot connect via Bluetooth.	Bluetooth is off on your device or machine. Machine is not in pairing mode.	Ensure both devices have Bluetooth enabled. Restart the boxing machine and try pairing again. Make sure no other device is currently connected.
Lights are not flashing or responding to music.	Not connected via Bluetooth or music is not playing. Incorrect mode selected.	Verify Bluetooth connection and ensure music is playing on your connected device. Cycle through modes using the 'Mode' button.
Adhesive pads are not holding the machine securely.	Wall surface is not clean, smooth, or suitable. Insufficient pressure during installation.	Clean the wall surface thoroughly. Ensure the surface is smooth and non-porous. Apply firm and sustained pressure during installation. For a more secure mount, consider using the screw installation method.

9. WARRANTY AND SUPPORT

Specific warranty information is not provided in this manual. For details regarding warranty coverage, technical support, or replacement parts, please refer to the product packaging or contact the retailer/manufacturer directly.

Manufacturer: Coxlrso

Model: Coxlrso 0013