

MAF Queen 12 Inch

MAF 12 Inch Queen Metal Platform Bed Frame

Model: Queen 12 Inch

SAFETY INFORMATION

Please read all instructions carefully before assembly and use. Keep this manual for future reference.

- Do not exceed the maximum weight capacity of 3000 pounds.
- Ensure all bolts and screws are securely tightened before use. Periodically check and re-tighten as needed.
- Keep small parts away from children during assembly to prevent choking hazards.
- Assemble the bed frame on a soft, clean surface to prevent scratching.

PRODUCT OVERVIEW

The MAF 12 Inch Queen Metal Platform Bed Frame is designed for durability, stability, and convenience. Constructed from heavy-duty steel, it provides robust support for your mattress without the need for a box spring. Its thoughtful design includes features to prevent mattress slippage, protect your floors, and maximize under-bed storage.

Key Features:

- **Heavy Duty Construction:** Made of strong steel, capable of supporting up to 3000 pounds.
- **Noise-Free Design:** Engineered to prevent squeaking and rattling for a quiet sleep environment.
- **Anti-Slip Features:** Includes plastic anti-skid baffles and rubber foot cushions to keep the mattress and frame in place.
- **Rounded Corners:** Safety-conscious design to prevent accidental injuries.
- **Ample Under-Bed Storage:** 10.4 inches of clearance provides significant space for storage.
- **No Box Spring Needed:** Dependable metal slats offer optimal mattress support.



Image: The MAF Queen Metal Platform Bed Frame, highlighting its 3000 LBS weight capacity.



Image: The MAF Queen Metal Platform Bed Frame installed in a bedroom, showcasing the available under-bed storage space.

ASSEMBLY INSTRUCTIONS

The MAF Queen Metal Platform Bed Frame is designed for straightforward assembly. While one person can assemble it, having a second person may make the process easier. All necessary tools and hardware are included.

Step-by-Step Assembly:

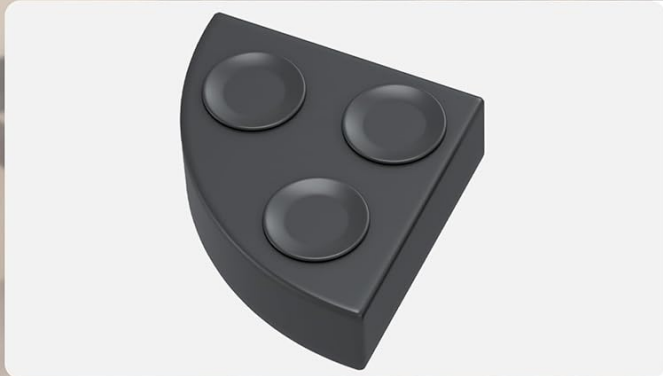
1. Unpack all components and verify against the parts list provided in your package.
2. Lay out the main frame sections on a clean, soft surface.
3. Connect the frame sections using the provided bolts and the included wrench. Ensure all connections are snug but do not overtighten initially.
4. Attach the support legs to the frame.
5. Insert the metal slats into their designated slots. Ensure they are properly seated for optimal support.

6. Install the plastic anti-skid baffles on all four sides of the frame, ensuring they are mounted outwards to prevent mattress slippage.
7. Place the rubber foot cushions on the bottom of each leg to protect your floor and reduce noise.
8. Once all components are in place, go back and securely tighten all bolts.



NO.1

ROUND CORNERS DESIGN
PREVENT INJURIES
CAUSED BY TOE BUMPS



NO.2

RUBBER MAT
NOISE FREE AND ANTI-SLIP
FLOOR PROTECTION



NO.3

ANTI-SLIP BAFFLES
FIXTURES STOP THE MATTRESS
FROM SLIPPING

Image: Detailed view of the bed frame's safety and stability features, including rounded corners, rubber foot mats, and anti-slip baffles.

Mattress Stopper mounted outwards

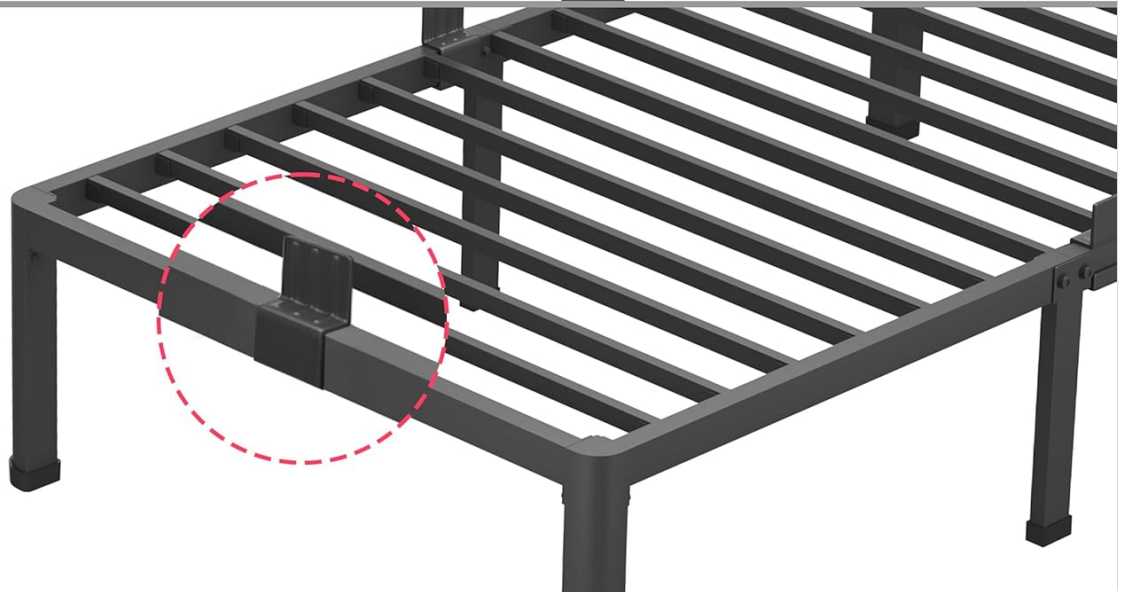
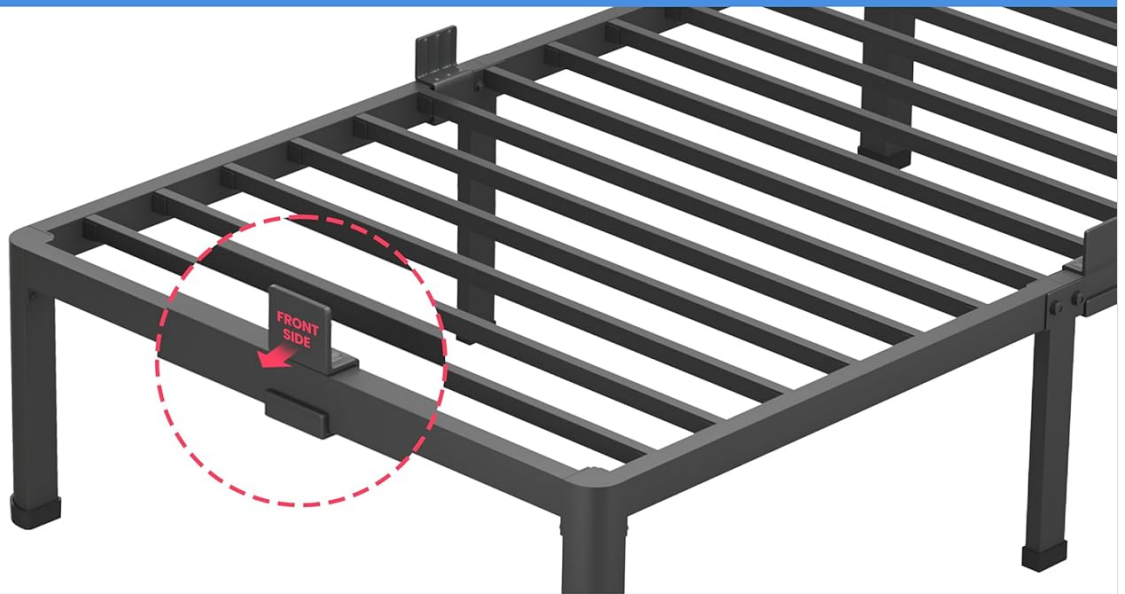


Image: An illustration demonstrating the correct outward mounting of the mattress stopper for effective mattress retention.

OPERATING INSTRUCTIONS

Once assembled, place your mattress directly onto the metal slats. No box spring is required. The frame is designed to provide stable support for various mattress types, including memory foam, latex, or innerspring mattresses. Ensure the mattress is centered on the frame for even weight distribution.



Image: The bed frame shown without a box spring, illustrating how the mattress rests directly on the supportive metal slats.

MAINTENANCE

To ensure the longevity and continued performance of your MAF bed frame, follow these simple maintenance guidelines:

- **Cleaning:** Wipe down the metal frame with a soft, damp cloth. Avoid using harsh chemicals or abrasive cleaners, as they may damage the finish.
- **Tightening:** Periodically (e.g., every 3-6 months) check all bolts and connections to ensure they remain tight. Re-tighten if any looseness is detected.
- **Inspection:** Inspect the frame for any signs of wear or damage. If any issues are found, contact customer support for assistance.

TROUBLESHOOTING

If you encounter any issues with your MAF bed frame, please refer to the following common solutions:

- **Squeaking Noises:** Squeaking is often caused by loose connections. Re-tighten all bolts on the frame, especially those connecting the main sections and legs. Ensure slats are properly seated.
- **Mattress Sliding:** Ensure the plastic anti-skid baffles are correctly installed and facing outwards. If sliding persists, consider using a non-slip mattress pad between the mattress and the frame.
- **Frame Wobbling:** Check that all legs are firmly on the ground and that all bolts are securely tightened. Ensure the frame is on a level surface.

If these steps do not resolve the issue, please contact MAF customer support for further assistance.

SPECIFICATIONS

Feature	Detail
Size	Queen
Product Dimensions	79.5"L x 59.5"W x 12"H
Weight Capacity	3000 LBS
Under-Bed Clearance	10.4 inches
Color	Black
Material	Heavy Duty Steel
Assembly Required	Yes
Compatible Mattress Size	80" x 60"

WARRANTY AND SUPPORT

MAF stands behind the quality of its products. For specific warranty details, please refer to the documentation included with your purchase or visit the official MAF website. If you require assistance with assembly, parts, or troubleshooting, please contact MAF customer support. Contact information can typically be found on the product packaging or the brand's official website.

For additional support and product information, you may visit the [MAF Store on Amazon](#).