

LG 86UQ7590PUD

LG 86UQ7590PUD 86 Inch HDR 4K UHD Smart TV User Manual

Model: 86UQ7590PUD

1. INTRODUCTION

This manual provides essential information for the safe and efficient use of your LG 86UQ7590PUD 86 Inch HDR 4K UHD Smart TV. Please read it thoroughly before operating the device and retain it for future reference.

2. SAFETY INFORMATION

Observe the following safety precautions to prevent electric shock, fire, or damage to the product:

- Do not block ventilation openings.
- Do not place the TV near heat sources.
- Protect the power cord from being walked on or pinched.
- Only use attachments/accessories specified by the manufacturer.
- Unplug the TV during lightning storms or when unused for long periods.
- Refer all servicing to qualified service personnel.

3. WHAT'S IN THE BOX

Verify that all components are present:

- LG 86UQ7590PUD 86 Inch HDR 4K UHD Smart TV
- Remote Control
- Stand (2 pieces)
- 2 AA batteries (for remote)



Figure 3.1: LG 86UQ7590PUD Smart TV with included stand and optional protection pack.

4. SETUP

4.1 Stand Installation

Carefully attach the two stand pieces to the bottom of the TV using the provided screws. Ensure the stand is securely fastened before placing the TV on a stable, flat surface.

4.2 Wall Mounting

If wall-mounting, use a VESA-compatible wall mount (sold separately) appropriate for the TV's size and weight. Follow the wall mount manufacturer's instructions for installation. Ensure proper wall reinforcement.



Figure 4.1: Side profile of the LG 86UQ7590PUD Smart TV, illustrating its slim design for stand or wall mounting.

4.3 Connecting Devices

Connect external devices such as cable boxes, gaming consoles, or Blu-ray players to the HDMI ports located on the rear of the TV. For internet connectivity, connect an Ethernet cable to the LAN port or connect wirelessly via Wi-Fi during the initial setup.



Figure 4.2: Rear view of the LG 86UQ7590PUD Smart TV, highlighting the various input ports for external device connections.

4.4 Initial Setup

After connecting the power cord and turning on the TV, follow the on-screen instructions to complete the initial setup. This includes selecting your language, connecting to a Wi-Fi network, and configuring basic settings.

5. OPERATING INSTRUCTIONS

5.1 Remote Control

The included remote control allows navigation through the TV's interface and functions. Insert the two AA batteries as indicated in the battery compartment.



Figure 5.1: The LG Smart TV remote control, featuring dedicated buttons for popular streaming services and navigation.

5.2 Basic Navigation

Use the directional pad and 'OK' button on the remote to navigate menus. Dedicated buttons for volume, channel, and smart features are also available.

5.3 Input Selection

Press the 'Input' button on the remote to switch between connected devices (e.g., HDMI 1, HDMI 2, Live TV).

6. SMART TV FEATURES

Your LG Smart TV runs on the webOS platform, offering a user-friendly interface and access to a wide range of applications.

6.1 WebOS and Applications

Access popular streaming services like Netflix, Prime Video, Disney+, Hulu, and YouTube directly from the TV's home screen. The TV also provides access to over 300 free LG Channels.

Video 6.1: Demonstration of LG's free app ecosystem and smart features.

Video 6.2: Overview of the LG 86-inch Smart TV's features and user experience.

6.2 AI ThinQ and Voice Control

Utilize LG's AI ThinQ technology for intelligent control and personalized recommendations. The TV supports built-in Google Assistant and Alexa, allowing voice commands for various functions.

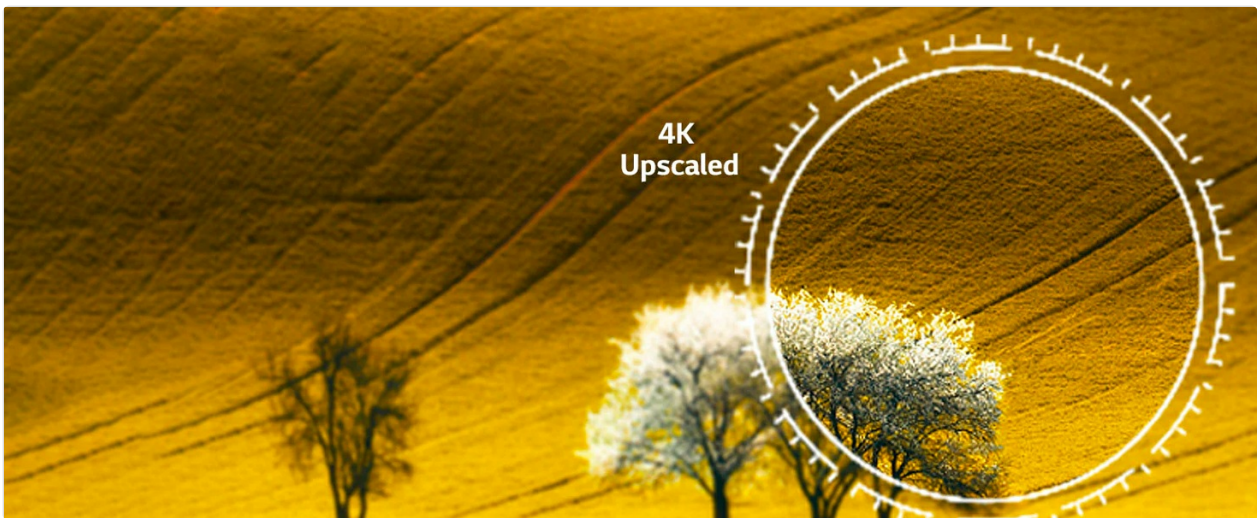


Figure 6.1: LG AI ThinQ integration with Google Assistant and Alexa for voice control.

6.3 Screen Sharing

The TV supports Apple AirPlay and Miracast for wirelessly sharing content from compatible devices.

7. PICTURE AND SOUND SETTINGS

Experience enhanced visuals and audio with the TV's advanced processing capabilities.

7.1 4K UHD and HDR

The 86-inch display offers 4K Ultra HD resolution and supports HDR (High Dynamic Range) for vibrant colors and improved contrast.



Figure 7.1: Visual comparison illustrating the enhanced detail and color of HDR 10 Pro versus conventional display.

7.2 AI Processor and Upscaling

The TV's AI Processor enhances picture and sound quality. It can upscale lower-resolution content to near 4K quality.

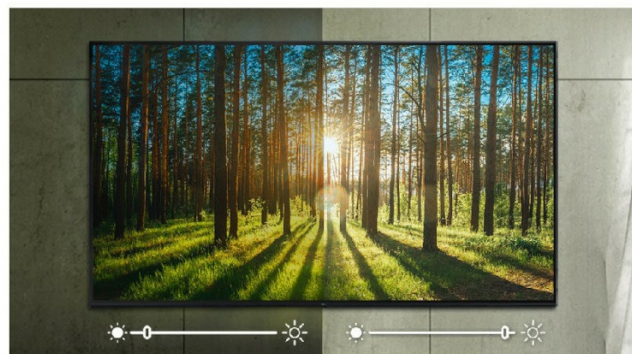


Figure 7.2: Diagram showing how 4K upscaling improves image clarity from lower resolutions.

7.3 AI Sound

The AI Sound feature optimizes audio based on content, providing a more immersive listening experience.



Figure 7.3: Visual representation of AI Sound adapting audio output for an enhanced experience.

7.4 Filmmaker Mode

Filmmaker Mode preserves the original aspect ratios, colors, and frame rates, delivering content as intended by the creators.

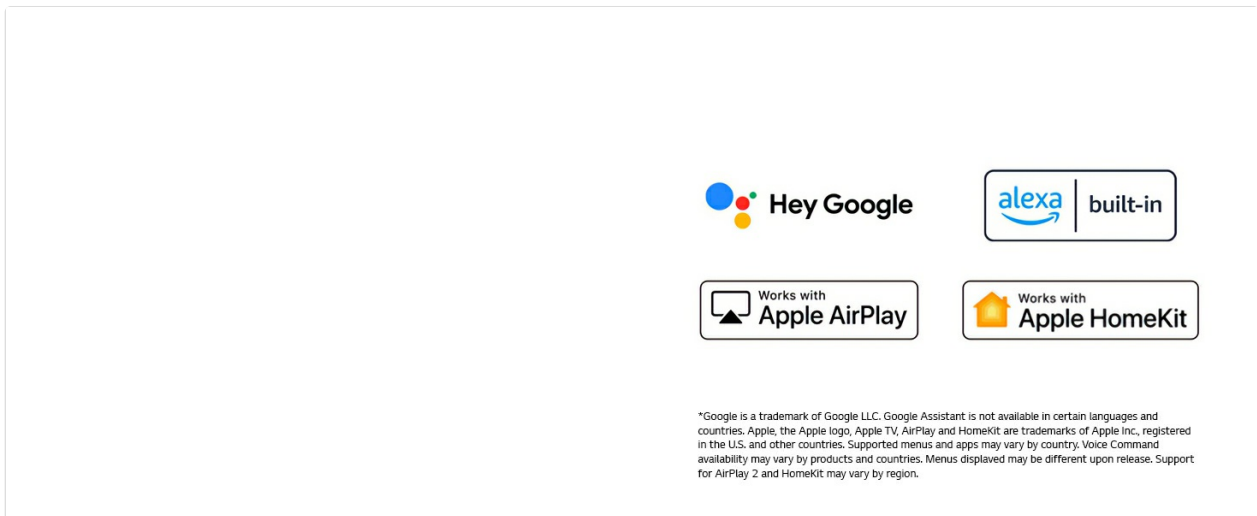


Figure 7.4: Filmmaker Mode icon, indicating a viewing setting that preserves original cinematic intent.

8. GAMING FEATURES

The LG 86UQ7590PUD is equipped with features to enhance your gaming experience.

8.1 Game Optimizer and FreeSync

Game Optimizer provides settings to fine-tune your gaming experience. AMD FreeSync Premium ensures smooth gameplay by reducing screen tearing and stuttering, especially with the 120Hz refresh rate.

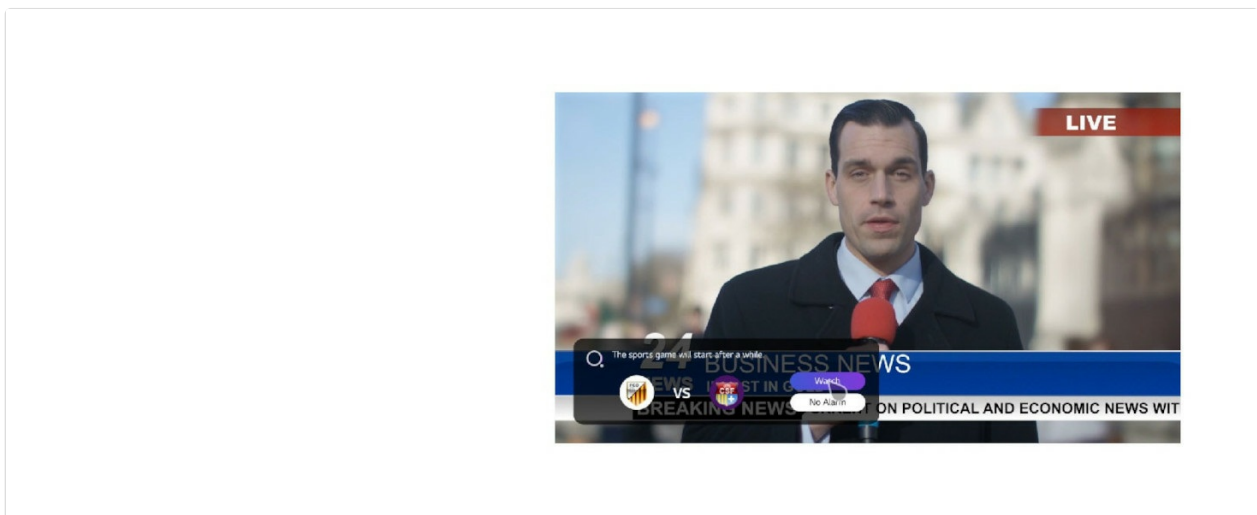


Figure 8.1: AMD FreeSync Premium logo, highlighting its role in providing smoother gaming visuals.

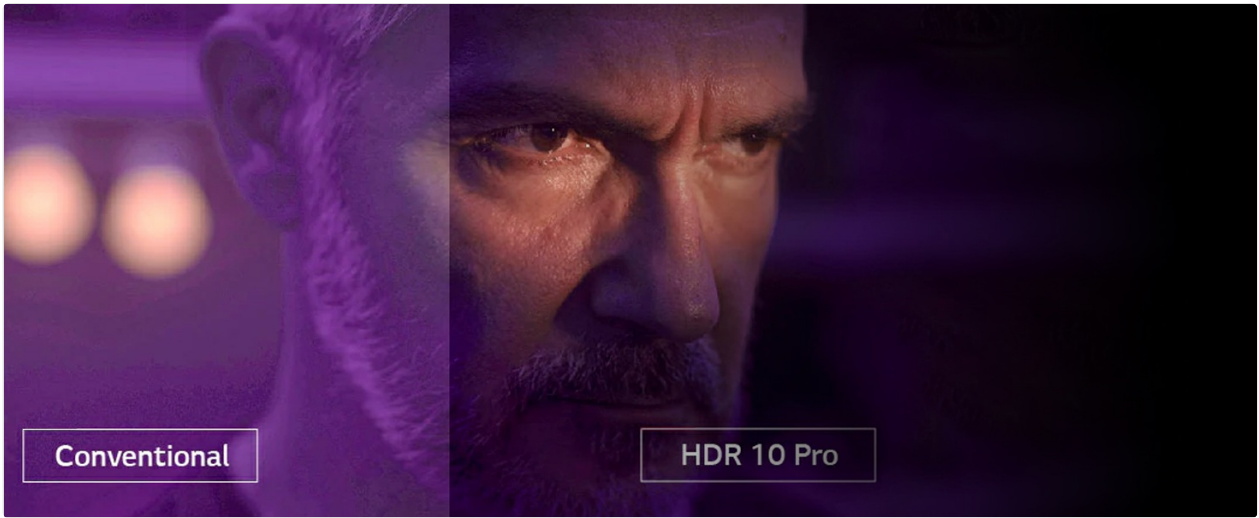


Figure 8.2: Game Optimizer interface, displaying options for optimizing game performance such as FPS and low latency.

9. MAINTENANCE

9.1 Cleaning

Gently wipe the screen and exterior with a soft, dry cloth. Do not use abrasive cleaners or solvents.

9.2 Software Updates

Ensure your TV's software is up to date for optimal performance and security. Updates can typically be found in the TV's settings menu under 'Support' or 'About This TV'.

10. TROUBLESHOOTING

If you encounter issues, try the following basic troubleshooting steps:

- **No Power:** Check if the power cord is securely plugged into both the TV and the wall outlet.
- **No Picture/Sound:** Verify that the correct input source is selected. Check all cable connections.
- **Remote Not Working:** Replace the batteries. Ensure there are no obstructions between the remote and the TV.
- **Network Connection Issues:** Restart your router and modem. Reconnect the TV to the Wi-Fi network.

Video 10.1: A user's experience with the LG 86-inch TV, highlighting its large display and smart features.

11. SPECIFICATIONS

Feature	Specification
Brand Name	LG
Item Weight	124.7 pounds
Product Dimensions	89 x 26 x 14 inches

Item Model Number	FBAAMZE99LG86UQ7590PUD
Batteries	2 AA batteries required. (included)
Special Features	Browser, Built-In Speaker, Closed Captioning, Game Mode, Miracast, Parental Controls, Sleep Timer, Spatial Scaling Engine, Wide Viewing Angle
Standing Screen Display Size	86 Inches
Aspect Ratio	1.77:1
Display Technology	LED
Resolution	4K
Refresh Rate	120
Connectivity Technology	Wi-Fi
Recommended Uses For Product	Home Viewing

12. WARRANTY AND SUPPORT

Your LG 86UQ7590PUD Smart TV comes with a manufacturer's warranty. For detailed warranty information, product registration, or technical support, please refer to the official LG website or contact LG customer service. Keep your purchase receipt for warranty claims.