

Shark HD331

Shark HD331 SpeedStyle Hair Dryer User Manual

Model: HD331

1. IMPORTANT SAFETY INFORMATION

Warning: To avoid risk of electric shock, do not use this hair dryer near water or in a damp environment. Unplug the hair dryer when not in use. Do not use the hair dryer with a damaged cord. To prevent overheating, allow the hair dryer to cool down before storing. Do not use the hair dryer to style wet hair for an extended period of time. Keep the hair dryer out of reach of children.

2. PRODUCT OVERVIEW

2.1. Key Features

- **High Speed Drying:** Designed for ultra-fast wet-to-dry styling without compromising hair health.
- **High Gloss Finish:** The RapidGloss Finisher helps achieve a high-shine finish on dry, straight hair by smoothing flyaways and reducing frizz.
- **No Heat Damage:** SpeedStyle regulates temperature 1,000 times per second, never exceeding 230°F (110°C), preventing heat damage.
- **IQ SpeedStyler Accessories:** Includes three intelligent accessories for customized styling: Turbo Concentrator, QuickSmooth Brush, and RapidGloss Finisher.
- **Dual Compatibility:** Compatible with both Shark FlexStyle and Shark SpeedStyle accessories.

2.2. Included Components

- Shark HD331 SpeedStyle Hair Dryer Unit
- XSKHD3SPA Storage Bag
- HD100SAHCA Non-Slip Hair Clips
- Turbo Concentrator Attachment
- QuickSmooth Brush Attachment
- RapidGloss Finisher Attachment



Figure 2.2.1: Shark SpeedStyle Hair Dryer with its three IQ SpeedStyler attachments.



Figure 2.2.2: Included neoprene storage bag for the SpeedStyle and its accessories.

3. SETUP

1. **Unpack:** Carefully remove all components from the packaging.
2. **Inspect:** Check the hair dryer and accessories for any signs of damage. Do not use if damaged.
3. **Connect to Power:** Plug the power cord into a standard electrical outlet. Ensure the voltage matches the requirements listed in the specifications.
4. **Attach Accessories:** To attach an IQ SpeedStyler accessory, align it with the nozzle of the hair dryer and push firmly until it clicks into place. To remove, pull the accessory straight off.

4. OPERATING INSTRUCTIONS

4.1. General Operation

- **Power On/Off:** Press the power button to turn the device on or off.
- **Temperature and Airflow Settings:** The SpeedStyle features intelligent attachments that automatically optimize heat and airflow settings for specific styling needs. Manual adjustments may also be available via dedicated buttons on the device. Refer to the indicator lights for current settings.

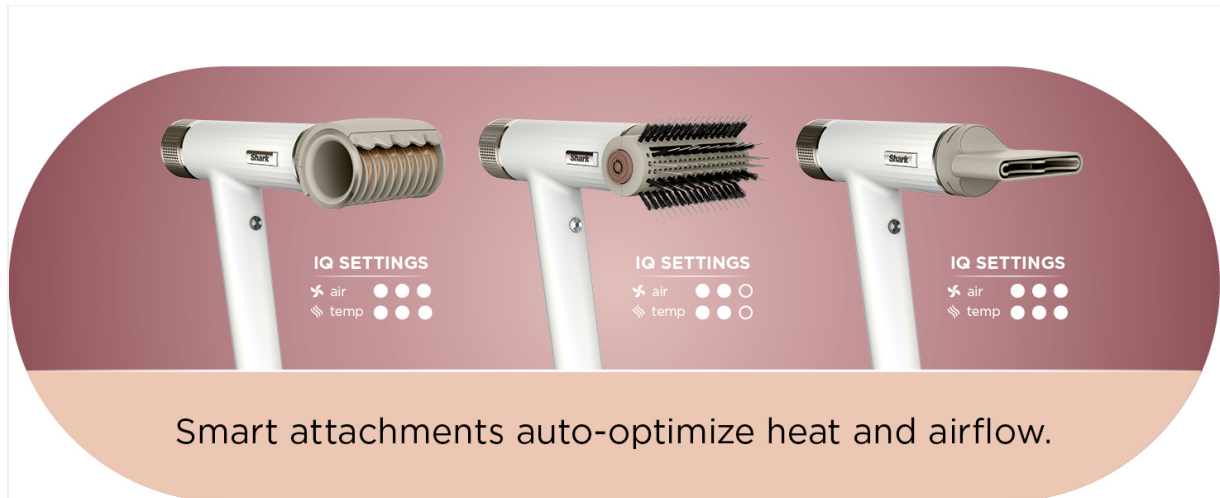


Figure 4.1.1: Smart attachments automatically adjust heat and airflow for optimal styling.

4.2. Using the IQ SpeedStyler Accessories

4.2.1. Turbo Concentrator

The Turbo Concentrator provides a slim, hyper-concentrated air path for precise, fast drying and traditional blowouts. It features a rotatable nozzle for easy styling.

- **Usage:** Attach the Turbo Concentrator. Direct the airflow downwards along the hair shaft while brushing to achieve smooth, straight styles.



Figure 4.2.1.1: Using the Turbo Concentrator for sleek, straight styles.

4.2.2. QuickSmooth Brush

The QuickSmooth Brush is designed to dry, volumize, and smooth hair in one step, ideal for straight and shiny hair with voluminous blowouts.

- **Usage:** Attach the QuickSmooth Brush. Work through sections of damp hair, brushing from roots to ends to dry, add volume, and smooth simultaneously.

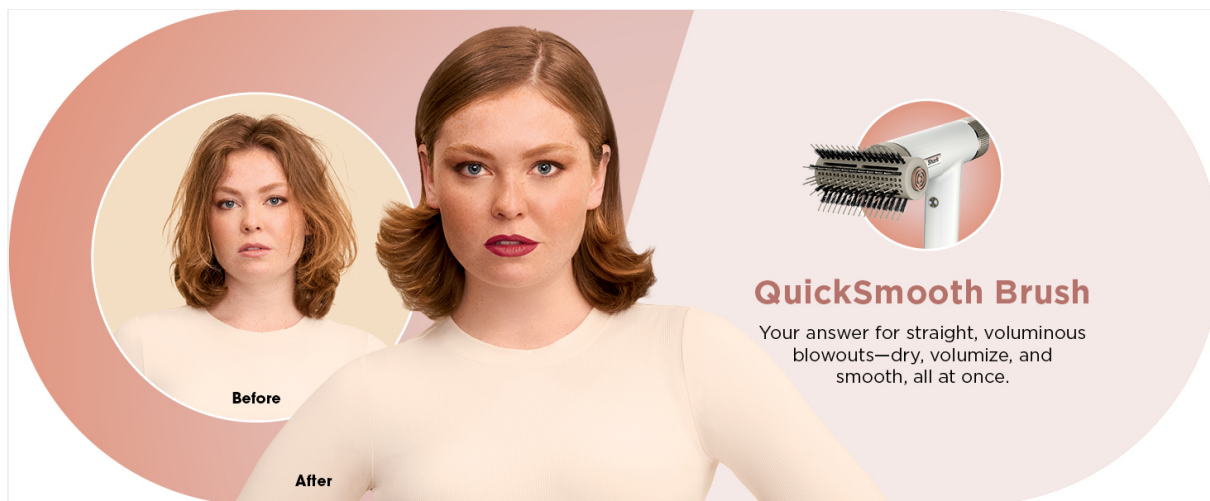


Figure 4.2.2.1: Using the QuickSmooth Brush for voluminous, straight blowouts.

4.2.3. RapidGloss Finisher

The RapidGloss Finisher utilizes the Coanda Effect to attract hair and lay down frizz and flyaways, providing a naturally shiny finish on dry hair.

- **Usage:** Attach the RapidGloss Finisher to dry hair. Use on the top layer of hair to smooth flyaways and enhance shine.

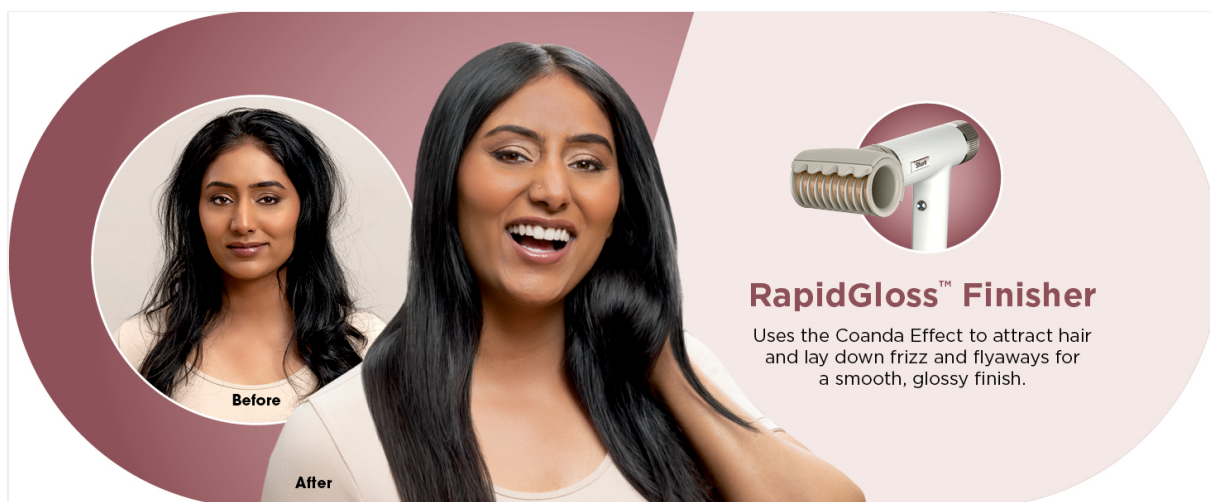


Figure 4.2.3.1: Using the RapidGloss Finisher for a smooth, glossy finish.

5. MAINTENANCE

- **Cleaning:** Ensure the device is unplugged and cool before cleaning. Wipe the exterior with a soft, damp cloth. Do not immerse the device in water. Regularly clean the air intake filter to maintain optimal performance.
- **Storage:** Store the Shark SpeedStyle hair dryer and its accessories in the provided XSKHD3SPA Storage Bag in a cool, dry place. Ensure the cord is not tightly wrapped around the device to prevent damage.

6. TROUBLESHOOTING

- **Device not turning on:** Ensure the power cord is securely plugged into a functional electrical outlet. Check for tripped circuit breakers.

- **No airflow or weak airflow:** Check if the air intake filter is blocked by dust or debris. Clean the filter as described in the Maintenance section.
- **Device overheating:** The SpeedStyle has built-in overheating protection. If it shuts off, unplug it and allow it to cool down for at least 30 minutes before attempting to use it again. Ensure the air intake and outlet are not obstructed.
- **Attachments not staying on:** Ensure the attachment is correctly aligned and pushed firmly onto the nozzle until it clicks into place.

7. SPECIFICATIONS

Feature	Detail
Model Number	HD331
Brand	Shark
Manufacturer	Shark
Power Source	Corded Electric
Material	Plastic
Special Feature	Fast Drying, Ionic Technology

8. WARRANTY AND SUPPORT

For warranty information, please refer to the warranty card included with your product or visit the official Shark website. For customer support, product registration, or to purchase replacement parts, please contact Shark customer service through their official channels.

Online Support: Visit www.sharkclean.com

Telephone Support: Refer to your product packaging or the official website for the most current contact numbers.