

PRFGKO B0CH7W9YDF

# PRFGKO WiFi Extender Instruction Manual

Model: B0CH7W9YDF

## INTRODUCTION

This manual provides detailed instructions for setting up, operating, and maintaining your PRFGKO WiFi Extender. Please read this manual thoroughly before using the device to ensure proper functionality and optimal performance.



Image: The PRFGKO WiFi Extender, a compact white device with a black side panel, featuring indicator lights, a WPS button, and an Ethernet port.

## SETUP INSTRUCTIONS

The PRFGKO WiFi Extender offers two primary methods for setup: WPS (Wi-Fi Protected Setup) and Web Interface/App Configuration.

### Method 1: WPS (Wi-Fi Protected Setup)

WPS provides a quick and easy way to connect your extender to your existing router without needing to enter

network passwords manually. Ensure your router supports WPS.

1. **Plug In the Extender:** Insert the WiFi Extender into a power outlet near your main router. Wait for the power indicator light to become stable.
2. **Press Extender's WPS Button:** Locate the WPS button on the PRFGKO WiFi Extender (often labeled "WPS" or with a WPS icon) and press it. The WPS indicator light on the extender should start blinking.
3. **Press Router's WPS Button:** Within two minutes, press the WPS button on your main WiFi router. Refer to your router's manual for the exact location of its WPS button.
4. **Wait for Connection:** The extender's WPS indicator light should become solid, indicating a successful connection. The signal strength indicator lights will illuminate to show the connection quality.
5. **Relocate the Extender:** Once connected, unplug the extender and move it to a location between your router and the area with weak WiFi signal. Plug it into a power outlet. Ensure the signal strength indicator lights show a good connection to the router.

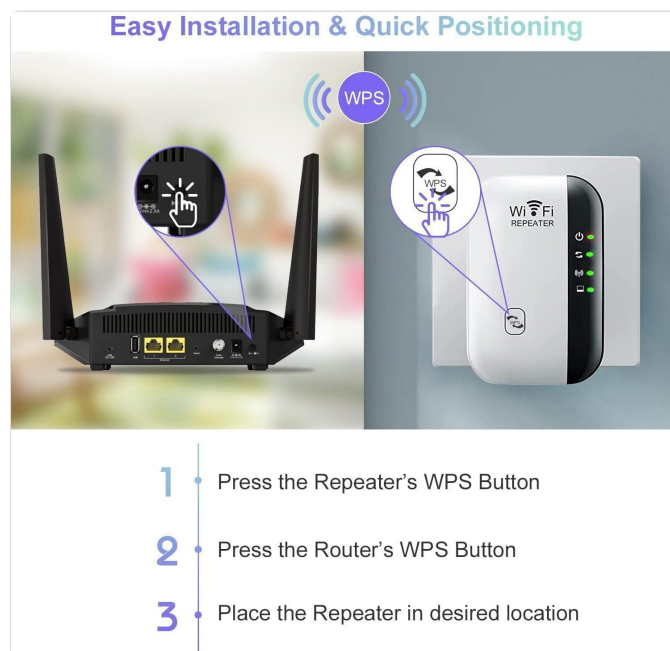


Image: Diagram illustrating the WPS setup process, showing the extender plugged into an outlet and a router, with arrows indicating pressing the WPS buttons on both devices.

## Method 2: Web Interface / App Configuration

This method provides more control over settings and is recommended if your router does not support WPS or for advanced configurations.

1. **Plug In the Extender:** Insert the WiFi Extender into a power outlet near your main router. Wait for the power indicator light to become stable.
2. **Connect to Extender's Network:** On your computer or mobile device, connect to the WiFi network broadcast by the extender. This network will typically have a name like "WiFi Repeater" or similar, without requiring a password initially.
3. **Access Setup Page:** Open a web browser and enter the default IP address or domain name provided in the quick start guide (e.g., <http://192.168.1.1> or a specific domain). You may be prompted to log in with default credentials (e.g., username: admin, password: admin).
4. **Select Repeater Mode:** Follow the on-screen instructions. Select "Repeater Mode" to extend your existing WiFi network.
5. **Select Your Network:** The extender will scan for available WiFi networks. Select your main router's WiFi network (SSID) from the list.

6. **Enter Password:** Enter the password for your main router's WiFi network. You may also have the option to set a new SSID and password for the extended network.
7. **Complete Installation:** Confirm your settings. The extender will restart. Once restarted, the signal strength indicator lights will show the connection quality.
8. **Relocate the Extender:** Unplug the extender and move it to a suitable location between your router and the area needing extended coverage. Plug it into a power outlet. Verify signal strength indicators.

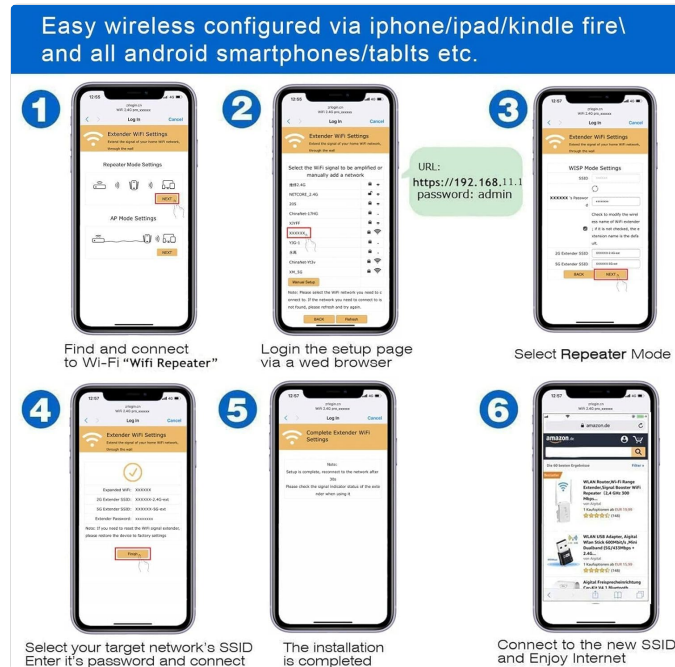


Image: A six-step diagram showing the process of setting up the WiFi extender via a web interface on a smartphone, including connecting to the extender's network, logging in, selecting repeater mode, choosing the target network, completing the setup, and connecting to the new extended network.

## OPERATING MODES AND USAGE

The PRFGKO WiFi Extender supports multiple operating modes to suit various networking needs.

### Repeater Mode

In Repeater Mode, the extender wirelessly connects to your existing router and amplifies its signal, extending coverage to areas with weak or no signal. This is the most common mode for home use.

- **Extended Coverage:** Ideal for eliminating WiFi dead zones in larger homes or offices.
- **Easy Setup:** Can be configured via WPS or web interface.

### Access Point (AP) Mode

In AP Mode, the extender connects to your router via an Ethernet cable and creates a new wireless network. This is useful for converting a wired network connection into a wireless one.

- **Wired to Wireless:** Converts a wired internet connection into a private WiFi hotspot.
- **Stable Connection:** Provides a more stable connection as it uses a wired backhaul to the main router.
- **Ethernet Port:** The device features an Ethernet port for this purpose.

### Optimal Placement

For best performance, place the extender in a location that receives a good signal from your main router and is also close to the area where you need extended coverage. Avoid placing it too close to the router (no

extension) or too far (no signal to extend).



Image: An overhead diagram of a house showing a router and two extenders, illustrating how extenders can eliminate WiFi dead zones by expanding signal coverage.



Image: A collage showing the WiFi extender being used in various environments such as a home, office, restaurant, and hotel, demonstrating its versatility.

## MAINTENANCE

Proper maintenance ensures the longevity and optimal performance of your WiFi Extender.

- **Firmware Updates:** Periodically check the manufacturer's website for firmware updates. Updating firmware can improve performance, add new features, and fix security vulnerabilities.
- **Cleaning:** Keep the device clean and free from dust. Use a soft, dry cloth to wipe the exterior. Do not use liquid cleaners or aerosols.
- **Ventilation:** Ensure the extender is placed in a well-ventilated area to prevent overheating. Do not cover ventilation openings.

- **Environmental Conditions:** Avoid exposing the device to extreme temperatures, humidity, or direct sunlight.
- **Power Cycle:** If you experience intermittent issues, try power cycling the device (unplug it from the power outlet, wait 10 seconds, then plug it back in).

## TROUBLESHOOTING

If you encounter issues with your PRFGKO WiFi Extender, refer to the following common problems and solutions.

- **No Power / Indicator Lights Off:**
  - Ensure the extender is securely plugged into a working power outlet.
  - Try a different power outlet.
- **Cannot Connect to Extender's WiFi Network:**
  - Ensure the extender is powered on.
  - If setting up via web interface, ensure you are connecting to the extender's default network (e.g., "WiFi Repeater") before configuration.
  - Try resetting the extender to factory defaults (see "Resetting the Extender" below).
- **Weak Signal or Frequent Disconnections:**
  - **Relocation:** The extender might be too far from your main router or too close to it. Relocate the extender to a position roughly halfway between your router and the WiFi dead zone. The signal indicator lights should show a strong connection to the router.
  - **Interference:** Avoid placing the extender near large metal objects, microwave ovens, cordless phones, or other devices that can cause interference.
  - **Obstacles:** Walls, floors, and ceilings can degrade signal. Try to minimize the number of obstacles between the router, extender, and your devices.
  - **Router Issues:** Ensure your main router is functioning correctly and providing a stable signal.
- **Internet Access Issues After Setup:**
  - Verify that your main router has an active internet connection.
  - Ensure you entered the correct WiFi password for your main router during setup.
  - Try restarting both your router and the extender.
  - If using AP Mode, ensure the Ethernet cable is securely connected to both the extender and the router.

- **Resetting the Extender:**

If you forget your login password or encounter persistent issues, you can reset the extender to its factory default settings. Locate the small reset button (often recessed) on the device. Use a paperclip or a thin object to press and hold the button for approximately 5-10 seconds until the indicator lights flash. The extender will restart with default settings, and you will need to reconfigure it.

## SPECIFICATIONS

Feature	Detail
Brand	PRFGKO
Model	B0CH7W9YDF

Wireless Communication Standard	802.11n
Frequency Band Class	Dual-Band
Special Features	1-Tap Setup, Ethernet Port, Alexa Compatible, Access Point Mode
Included Components	Power adapter, Instruction manual
Package Dimensions	4.41 x 3.98 x 2.72 inches
Item Weight	4.6 ounces
Date First Available	August 30, 2023

## WARRANTY AND SUPPORT

### Warranty Information

Specific warranty details for the PRFGKO WiFi Extender are typically provided with the product packaging or on the manufacturer's official website. Please refer to these resources for information regarding warranty duration and terms.

### Customer Support

For technical assistance, troubleshooting beyond this manual, or warranty claims, please contact PRFGKO customer support. Contact information can usually be found on the product packaging, the manufacturer's website, or through your point of purchase.