

Bogen (3f527918-c522-4382-ad79-67bc593c65a9)

# Livarno Home Stainless Steel Door Hook Rail (Arc) User Manual

Model: Bogen (3f527918-c522-4382-ad79-67bc593c65a9)

Brand: Generic

## 1. INTRODUCTION

This manual provides instructions for the proper installation, use, and maintenance of your Livarno Home Stainless Steel Door Hook Rail. This product is designed to provide convenient hanging space over standard doors without the need for drilling or permanent fixtures.

## 2. SAFETY INSTRUCTIONS

- Ensure the door hook rail is securely placed over the door before hanging items.
- Do not overload the hooks. Distribute weight evenly and do not exceed the rail's capacity.
- Keep out of reach of small children to prevent accidental injury.
- This product is intended for indoor use only.
- Avoid hanging sharp or fragile objects that could cause injury or damage if they fall.

## 3. PACKAGE CONTENTS

Please check the package to ensure all components are present and undamaged:

- 1 x Livarno Home Stainless Steel Door Hook Rail (Arc)
- 8 x Hooks (integrated into the rail)
- Soft pads (pre-attached or included for door protection)

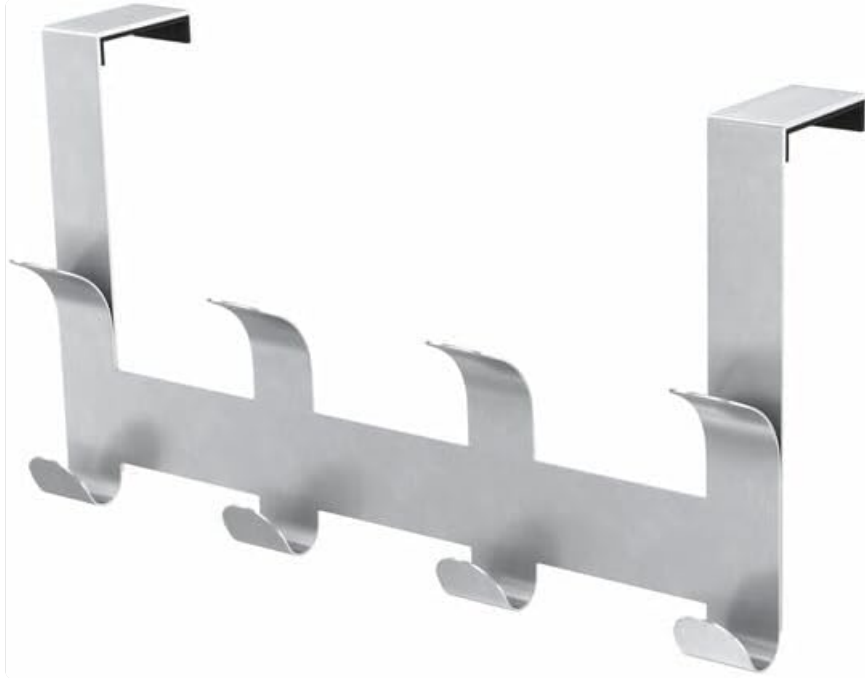
*Note: The product features 8 integrated hooks, 4 on the front and 4 on the back, providing ample hanging space.*

## 4. SETUP AND INSTALLATION

The Livarno Home Door Hook Rail is designed for quick and easy installation without tools.

1. **Unpack the Product:** Carefully remove the door hook rail from its packaging.
2. **Inspect for Damage:** Before installation, inspect the rail for any signs of damage during transit.

3. **Prepare the Door:** Ensure the top edge of your door is clean and free of obstructions. This rail is suitable for standard doors with a fold thickness of approximately 1.8 cm (0.7 inches).
4. **Position the Rail:** Place the top hooks of the rail over the top edge of the door. The soft pads should rest against the door surface to protect it from scratches.
5. **Secure Placement:** Gently push down on the rail to ensure it sits firmly and evenly on the door. It should hang straight and not wobble.



*Image: The Livarno Home Stainless Steel Door Hook Rail, featuring an arc design and eight integrated hooks, shown ready for installation. The top brackets are designed to fit over a standard door, with soft pads visible on the inside of the brackets to protect the door surface. The rail itself is a flat, brushed silver stainless steel bar with four hooks curving upwards and four hooks curving downwards, providing ample hanging space.*

## 5. OPERATING INSTRUCTIONS

---

Once installed, the door hook rail is ready for use. Simply hang items such as clothes, towels, bags, or coats on the available hooks. Distribute the weight evenly across the hooks to maintain stability.

## 6. MAINTENANCE

---

To ensure the longevity and appearance of your stainless steel door hook rail, follow these simple maintenance guidelines:

- **Cleaning:** Wipe the surface with a soft, damp cloth. For stubborn marks, a mild soap solution can be used. Avoid abrasive cleaners or scouring pads, as these can scratch the satin finish.
- **Drying:** After cleaning, dry the rail thoroughly with a clean, dry cloth to prevent water spots.
- **Inspection:** Periodically check the rail for any signs of wear or damage, especially the soft pads that protect the door.

## 7. TROUBLESHOOTING

---

The Livarno Home Door Hook Rail is a simple, non-mechanical product, and issues are rare. However, if you encounter any problems, consider the following:

- **Rail is not stable:** Ensure the rail is fully seated on the door and that the door thickness is approximately 1.8 cm. Uneven weight distribution can also cause instability.
- **Scratches on door:** Verify that the soft pads are correctly positioned and intact. If pads are missing or damaged, contact customer support for replacements or use alternative protective material.

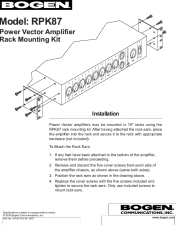


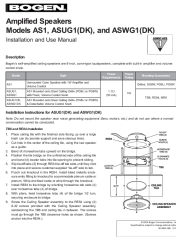
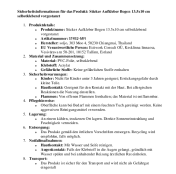

## 8. SPECIFICATIONS

Feature	Detail
Product Name	Livarno Home Stainless Steel Door Hook Rail (Arc)
Model Number	3f527918-c522-4382-ad79-67bc593c65a9
Brand	Generic
Material	Stainless Steel
Finish	Satin
Color	Silver
Number of Hooks	8 (Arc design)
Mounting Type	Over Door Mount
Compatible Door Thickness	Approx. 1.8 cm (0.7 inches)
Item Weight	440 g (0.97 lbs)
Package Dimensions	30 x 18 x 4.5 cm (11.8 x 7.1 x 1.8 inches)
Special Features	Portable, Door-friendly soft pads

## 9. WARRANTY AND SUPPORT

For warranty information or customer support, please refer to the retailer or manufacturer's website where the product was purchased. Keep your proof of purchase for any warranty claims.

For further assistance, you may contact the manufacturer OWIM, as listed in the product specifications.

 <p><b>BOGEN</b> Model: RPK87 Power Vector Amplifier Rack Mounting Kit</p> <p><b>Installation</b></p> <p>After the amplifier has been properly installed, follow these steps to attach the rack ears and mounting hardware to the rear of the amplifier.</p> <p><b>To Mount the Rack Ears:</b></p> <ol style="list-style-type: none"> <li>1. Loosen the screws attaching the rack ears to the amplifier.</li> <li>2. Remove and discard the two outer screws from each side of the amplifier. Do not discard the screws from the center of the amplifier.</li> <li>3. Push the rack ears into the holes on the rear of the amplifier. Push the ears in until they are flush with the rear of the amplifier.</li> <li>4. Tighten the screws on the rack ears.</li> </ol> <p>Mount the ears.</p> <p><b>BOGEN</b></p>	<p><a href="#">Bogen RPK87 Power Vector Amplifier Rack Mounting Kit Installation Guide</a></p> <p>Installation instructions for the Bogen RPK87 Rack Mounting Kit, designed for Power Vector amplifiers. Learn how to attach rack ears and mount your amplifier securely in a 19-inch rack.</p>
 <p><b>BOGEN</b></p> <p><b>MCP35A</b> Master Control Panel Installation &amp; Use Manual</p>	<p><a href="#">Bogen MCP35A Master Control Panel: Installation and Use Manual</a></p> <p>This manual provides detailed installation, operation, and technical specifications for the Bogen MCP35A Master Control Panel, a versatile system for two-way communication and program distribution in various environments.</p>
 <p><b>BOGEN</b></p> <p>Model: ACD2X2 Amplified Drop-In Ceiling Speaker</p> <p><b>Installation</b></p> <p>Read the instructions carefully before attempting to install the speaker. The speaker is designed for drop-in installation in 2x2 and 2x4 ceiling tiles.</p> <p><b>Technical Specifications</b></p> <p>Power Rating: 20W (100V), 10W (240V) Frequency Response: 100 Hz - 15 kHz Sensitivity: 95 dB (1W/1m) Impedance: 16Ω (100V), 8Ω (240V)</p>	<p><a href="#">Bogen ACD2X2 Amplified Drop-In Ceiling Speaker Installation Guide and Warranty</a></p> <p>Installation instructions, connection details, and warranty information for the Bogen ACD2X2 amplified drop-in ceiling speaker. Covers electrical connections, ceiling mounting for 2x2 and 2x4 tiles, and product specifications.</p>
 <p><b>BOGEN</b></p> <p>Amplified Speakers Models AS1, ASUG1(DK), and ASWG1(DK) Installation and Use Manual</p> <p><b>Installation</b></p> <p>Read the instructions carefully before attempting to install the speaker. The speaker is designed for drop-in installation in 8-inch cone-type ceiling enclosures.</p> <p><b>Technical Specifications</b></p> <p>Power Rating: 20W (100V), 10W (240V) Frequency Response: 100 Hz - 15 kHz Sensitivity: 95 dB (1W/1m) Impedance: 16Ω (100V), 8Ω (240V)</p>	<p><a href="#">Bogen AS1, ASUG1(DK), ASWG1(DK) Amplified Ceiling Speaker Installation &amp; Use Manual</a></p> <p>Installation and use manual for Bogen's AS1, ASUG1(DK), and ASWG1(DK) self-amplified 8-inch cone-type ceiling loudspeakers. Covers product description, installation instructions for TB8 and RE84 enclosures, electrical connections, adjustments, and limited warranty information.</p>
 <p><b>Sticker Sheet 13.5x10 cm Self-Adhesive Pre-Cut - Safety and Handling Information</b></p> <p><b>Instructions:</b></p> <ol style="list-style-type: none"> <li>1. Read the instructions carefully before attempting to use the product.</li> <li>2. Use the product in a well-ventilated area.</li> <li>3. Do not use the product near open flames or heat sources.</li> <li>4. Do not use the product near water or other liquids.</li> <li>5. Do not use the product near electrical equipment.</li> <li>6. Do not use the product near children or pets.</li> <li>7. Do not use the product near food or drink.</li> <li>8. Do not use the product near flammable materials.</li> <li>9. Do not use the product near combustible materials.</li> <li>10. Do not use the product near explosive materials.</li> </ol>	<p><a href="#">Sticker Sheet 13.5x10 cm Self-Adhesive Pre-Cut - Safety and Handling Information</a></p> <p>Comprehensive safety, material, handling, storage, disposal, emergency, and transport information for the Sticker Sheet 13.5x10 cm Self-Adhesive Pre-Cut product.</p>
 <p><b>NEAR</b> Signature S4/S4T and S5/S5T Installation Manual and Specifications</p> <p><b>Installation</b></p> <p>Read the instructions carefully before attempting to install the speaker. The speaker is designed for drop-in installation in 8-inch cone-type ceiling enclosures.</p> <p><b>Technical Specifications</b></p> <p>Power Rating: 20W (100V), 10W (240V) Frequency Response: 100 Hz - 15 kHz Sensitivity: 95 dB (1W/1m) Impedance: 16Ω (100V), 8Ω (240V)</p>	<p><a href="#">NEAR Signature S4/S4T and S5/S5T Installation Manual and Specifications</a></p> <p>Installation guide and technical specifications for Bogen's NEAR Signature S4/S4T and S5/S5T loudspeakers, including warranty information.</p>