

Manuals.plus /

› TOUCAN RC HOBBY /

› TOUCAN RC HOBBY 1/14 HUINA RC Metal Excavator Model 1594 Instruction Manual

TOUCAN RC HOBBY 1594

TOUCAN RC HOBBY 1/14 HUINA RC Metal Excavator Model 1594 Instruction Manual

Model: 1594 | Brand: TOUCAN RC HOBBY

1. INTRODUCTION

Thank you for purchasing the TOUCAN RC HOBBY 1/14 HUINA RC Metal Excavator Model 1594. This remote-controlled excavator is designed for enthusiasts aged 15 years and older, offering a realistic and engaging operating experience. Please read this manual thoroughly before operating the product to ensure safe and correct usage.

Safety Warning: This product is not suitable for children under 15 years of age. Adult supervision is recommended during operation.

2. WHAT'S IN THE BOX

Upon unboxing your TOUCAN RC HOBBY 1/14 HUINA RC Metal Excavator Model 1594, please verify that all the following components are included:

- 1x 1/14 HUINA RC Metal Excavator Model 1594 (with standard bucket attached)
- 1x 2.4G Radio Controller
- 1x Body Battery (Lithium-Ion Polymer)
- 1x USB Charging Cable
- 1x Alloy Ball Grabber Attachment
- 1x Plastic Ball Grabber Attachment
- 1x Alloy Log Grabber Attachment
- 1x Drill Attachment



Image: All components included in the package, featuring the excavator, remote, battery, charging cable, and interchangeable attachments.

3. SETUP

3.1. Battery Installation (Excavator)

1. Locate the battery compartment on the underside of the excavator.
2. Open the battery compartment cover.
3. Connect the provided Lithium-Ion Polymer battery to the excavator's power connector.
4. Carefully place the battery inside the compartment and close the cover securely.

Your browser does not support the video tag.

Video: Demonstrates the process of installing the battery into the excavator's compartment and connecting it.

3.2. Remote Control Battery Installation

1. Locate the battery compartment on the back of the remote control.
2. Open the battery compartment cover using a small screwdriver if necessary.
3. Insert the required batteries (typically AA, not included) according to the polarity indicators.
4. Close the battery compartment cover securely.

3.3. Attachment Installation

The excavator comes with a standard bucket and three interchangeable attachments: an alloy ball grabber, a plastic ball grabber, and an alloy log grabber, plus a drill attachment. To change attachments:

1. Use the provided tool to remove the pins securing the current attachment to the excavator arm.

2. Carefully detach the current attachment.
3. Align the desired new attachment with the excavator arm's connection points.
4. Insert the pins to secure the new attachment. Ensure they are fully seated and locked.
5. For powered attachments (like the grabbers or drill), connect the small power cable from the attachment to the port on the excavator arm.

Your browser does not support the video tag.

Video: Illustrates the step-by-step process of exchanging the excavator's attachments, including the bucket, grabbers, and drill.



Image: The four main attachments for the excavator, showcasing their different designs and intended uses.

4. OPERATING THE EXCAVATOR

4.1. Power On/Off and Pairing

1. Turn on the excavator using the power switch located on its underside.
2. Turn on the remote control using its power switch.
3. The excavator and remote should automatically pair. If not, refer to the troubleshooting section.

4.2. Basic Movement Controls

Use the joysticks on the remote control to maneuver the excavator:

- **Left Joystick (Forward/Backward):** Pushing both sticks forward moves the excavator forward; pulling both back moves it backward.
- **Left Joystick (Turning):** Pushing one stick forward and the other backward allows for turning.
- **Right Joystick (Turret Rotation):** Moving the right joystick left or right rotates the upper platform 360 degrees continuously.



Image: The excavator's upper body rotating, highlighting its 360-degree continuous rotation feature.

4.3. Arm and Attachment Operation

The remote control features dedicated buttons and joysticks for controlling the excavator's arm and attachments:

- **Arm Control:** Use the designated buttons/joysticks to raise, lower, extend, and retract the excavator arm independently.
- **Bucket/Grabber/Drill Control:** Specific buttons activate the functions of the attached tool, such as scooping with the bucket, opening/closing the grabber, or operating the drill.

Your browser does not support the video tag.

Video: A demonstration of the excavator's various features and movements, including arm articulation and attachment functions.

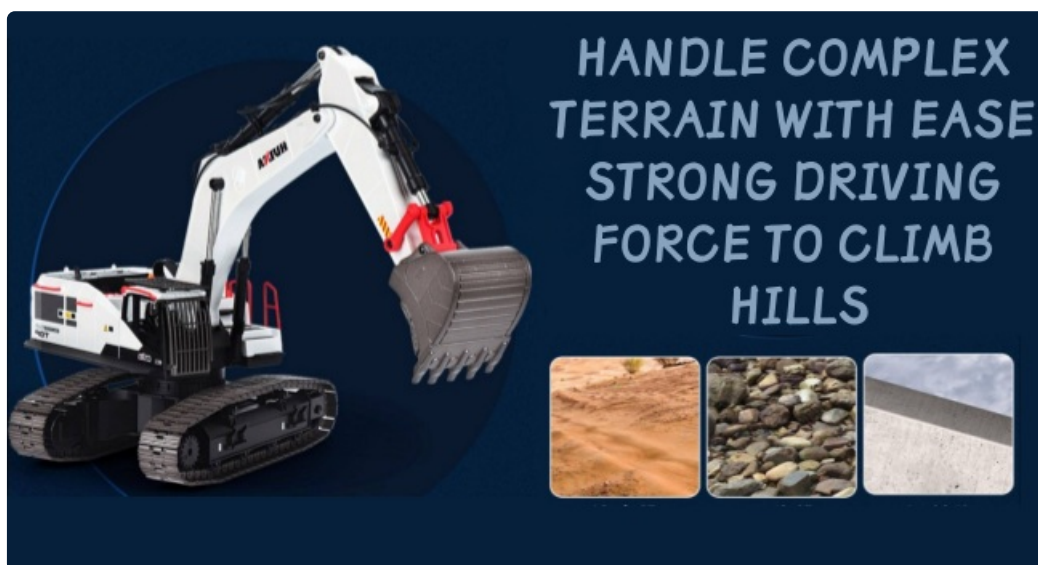


Image: The excavator navigating different terrains, showcasing its robust tracks and powerful movement.

4.4. Realistic Lights and Sounds

The excavator features realistic LED lighting effects and a simulated engine sound for an immersive operating experience. These can typically be toggled on/off via dedicated buttons on the remote control.

Your browser does not support the video tag.

Video: Highlights the realistic light and sound features of the 1/14 HUINA RC Metal Excavator Model 1594.

5. MAINTENANCE

- **Cleaning:** After each use, especially outdoors, gently wipe down the excavator with a dry or slightly damp cloth to remove dirt, dust, or debris. Avoid using harsh chemicals or excessive water.
- **Battery Care:** Always disconnect the battery from the excavator when not in use. Store batteries in a cool, dry place. Do not overcharge or completely discharge the battery.
- **Storage:** Store the excavator and its components in a dry, safe place away from direct sunlight and extreme temperatures. The original packaging or a dedicated storage case is ideal.
- **Lubrication:** Periodically check moving parts for smooth operation. Light lubrication with RC-safe oil may be applied to metal joints if needed, but avoid over-lubricating.

6. TROUBLESHOOTING

- **Excavator Not Responding:**
 - Ensure both the excavator and remote control are powered on.
 - Check if the batteries in both devices are fully charged and correctly installed.
 - Re-pair the remote control by turning both devices off and then on again.
- **Weak Performance:**
 - Recharge the excavator's battery.
 - Replace the batteries in the remote control.
- **Attachments Not Working:**
 - Verify that the attachment is securely installed and its power cable (if applicable) is properly connected.
- **Interference:**
 - Operate the excavator away from other 2.4GHz devices or strong electromagnetic fields.

7. SPECIFICATIONS



Image: Dimensional overview of the excavator, indicating its length, width, and height.

Feature	Detail
Brand Name	TOUCAN RC HOBBY
Model Name	RC MODEL (1594)
Manufacturer Part Number	TH19286
Scale	1/14
Dimensions (L x W x H)	28 x 15.2 x 12 inches
Item Weight	18 Pounds
Material Type	Metal, Plastic
Power Source	Battery Powered
Battery Type	Lithium-Ion Polymer (1 required, included)
Operation Mode	Remote Control (2.4G Radio Controller)
Channels	22-Channel RC System
Additional Features	Weather Resistant, Realistic Lights & Sounds, 360° Infinite Rotation, Independent Boom Control
Included Components	Bucket, Drill, Ball Claw, Wooden Claw, 2.4G Radio Controller, Body Battery, USB Charging Cable
Indoor/Outdoor Usage	Outdoor
Recommended Age	Adult (Manufacturer Minimum Age: 256 months)

8. WARRANTY AND SUPPORT

For warranty information, technical support, or any inquiries regarding your TOUCAN RC HOBBY 1/14 HUINA RC Metal Excavator Model 1594, please refer to the contact information provided with your purchase or visit the official TOUCAN RC HOBBY website. Keep your proof of purchase for warranty claims.