

## Manuals+

[Q & A](#) | [Deep Search](#) | [Upload](#)

manuals.plus /

- › [Freego](#) /
- › [Freego F2 Pro Electric Motorcycle Dirt Bike User Manual](#)

## Freego F2 Pro

# Freego F2 Pro Electric Motorcycle Dirt Bike User Manual

Model: F2 Pro

## 1. INTRODUCTION

---

Thank you for choosing the Freego F2 Pro Electric Motorcycle Dirt Bike. This manual provides essential information for the safe and efficient operation, maintenance, and troubleshooting of your new e-bike. Please read this manual thoroughly before your first ride and keep it for future reference.

The Freego F2 Pro is a powerful electric bicycle designed for adults, featuring a 1400W brushless motor, 48V/22.5Ah removable lithium-ion battery, and 20" x 4.0" fat tires. It offers versatile riding options including pedal assist and pure electric modes, with a top speed of up to 34 MPH and a range exceeding 40 miles per charge. Dual hydraulic brakes and suspension ensure a comfortable and secure riding experience across various terrains.



Figure 1.1: Freego F2 Pro Electric Motorcycle Dirt Bike (Side View). This image shows the overall design of the F2 Pro, highlighting its robust frame, fat tires, and integrated battery.

## 2. SAFETY INFORMATION

---

Your safety is paramount. Always wear a helmet and appropriate safety gear when riding. Adhere to all local traffic laws and regulations. This e-bike is designed for adult riders. Do not allow children to operate this vehicle.

- **Pre-Ride Check:** Before each ride, inspect brakes, tires, battery level, and all fasteners.
- **Battery Safety:** Use only the provided charger. Do not expose the battery to extreme temperatures or puncture it.
- **Riding Conditions:** Be cautious in wet conditions, on loose surfaces, or at night. Use the integrated head and tail lights for improved visibility.
- **Load Capacity:** Do not exceed the maximum load capacity of 330 pounds.

## 3. PACKAGE CONTENTS

---

Upon unpacking, please ensure all items are present and undamaged:

- 1 x Freego F2 Pro Adult Fat Tire Electric Bike
- 1 x Charger

- 1 x E Bike Accessory Kit
- 1 x Tool Kit
- 1 x User Manual (this document)

## 4. SETUP AND ASSEMBLY

The Freego F2 Pro requires some assembly. Refer to the included tool kit and accessory kit for necessary components. Detailed assembly instructions are provided in a separate guide within your package. Ensure all connections are secure and components are properly installed before your first ride.

### Key Assembly Steps:

1. Attach the front wheel and fender.
2. Install the handlebars and secure them.
3. Mount the pedals.
4. Install the seat and adjust to a comfortable height.
5. Connect the battery and ensure it is fully charged before initial use.

## 5. COMPONENTS OVERVIEW

### 5.1 Motor and Power System



Figure 5.1: Diagram illustrating the 1400W brushless motor, highlighting its 80 Nm torque and capability for climbing inclines up to 40 degrees.

- **Motor:** 1400W (Peak) / 48V brushless motor, providing up to 80 Nm of torque for powerful acceleration and hill climbing.
- **Battery:** 48V/22.5Ah removable lithium-ion battery. The battery is UL certified for safety.
- **Charging:** The battery can be charged while installed on the bike or removed. A USB outlet is available on the battery for charging external devices.

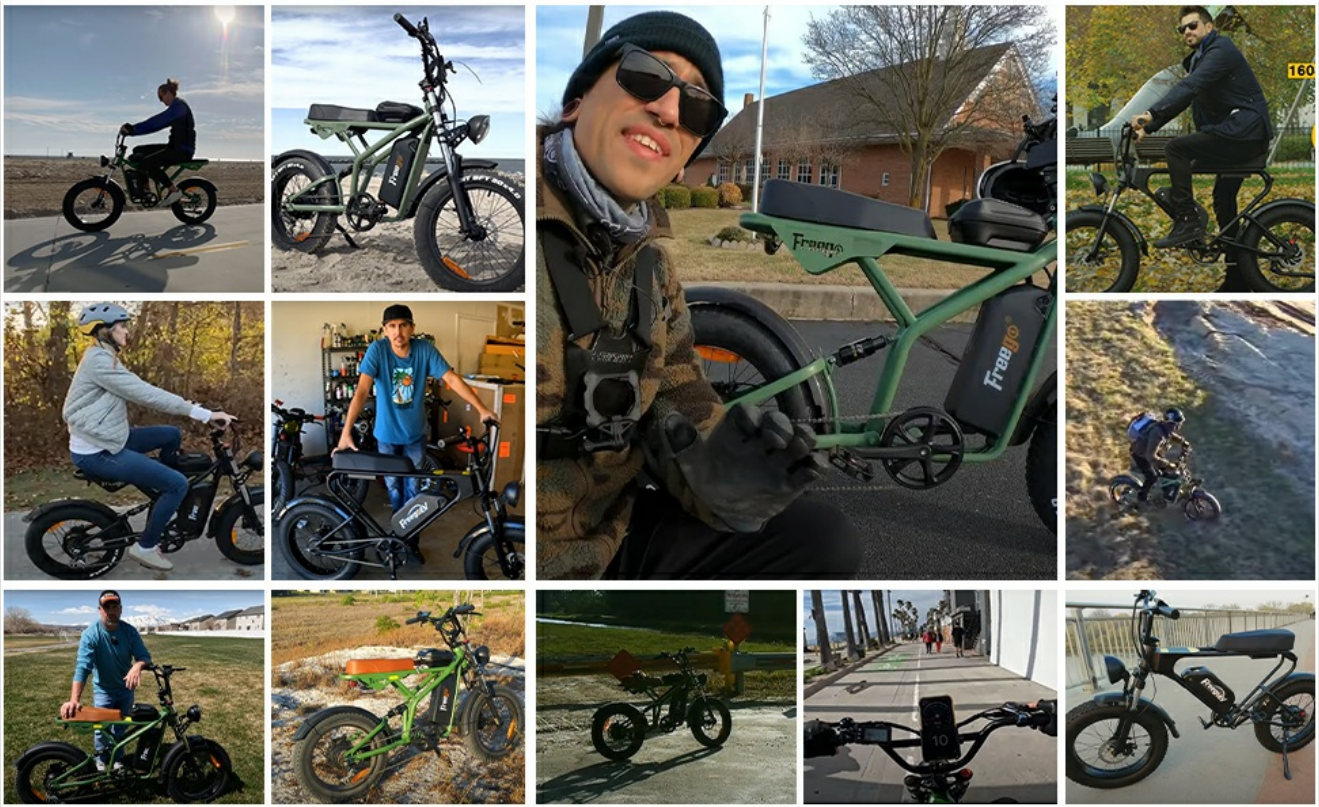


Figure 5.2: Cutaway diagram of the 48V 22.5Ah removable lithium-ion battery, showing its internal cells and connection points.

## 5.2 Frame and Wheels

- **Frame Material:** High-strength steel pipe, diamond frame type.
- **Wheel Size:** 20 inches.
- **Tires:** 20" x 4.0" fat tires, providing excellent traction on various surfaces.
- **Fenders:** Front and rear fenders are included.



Figure 5.3: Close-up of the front wheel with its 4.0-inch fat tire, designed for stability and grip.



Figure 5.4: Close-up of the rear wheel, showing the motor hub and Shimano derailleur.

## 5.3 Braking and Suspension

- **Brakes:** Dual hydraulic disc brakes (180mm rotors) on both front and rear wheels for reliable stopping power.
- **Suspension:** Dual suspension system with front fork double shock absorption and independent rear shock absorption for a smooth ride on uneven terrain.



Figure 5.5: Detail of the front fork suspension, designed to absorb shocks and provide a comfortable ride.



Figure 5.6: Close-up of the rear shock absorber, contributing to the bike's overall ride comfort.

## 5.4 Controls and Display

- **Handlebars:** BMX-style handlebars.
- **Shifter:** 7-speed Shimano derailleur with a thumb shifter.
- **Throttle:** Half-twist throttle.
- **Display:** Intuitive LCD control panel to monitor speed, battery level, and mileage.
- **Lights:** Bright head and tail lights for improved visibility.

## 6. OPERATING INSTRUCTIONS

---

### 6.1 Powering On/Off

- To power on the e-bike, press and hold the power button on the control panel.
- To power off, press and hold the power button again.

### 6.2 Riding Modes

The F2 Pro offers two primary riding modes:

- **Pedal Assist Mode:** Provides motor assistance as you pedal. There are multiple levels of pedal assist (e.g., 1-5) which can be adjusted via the control panel. Range: 38-50 miles.
- **Pure Electric Mode (Throttle Only):** Engages the motor without pedaling, controlled by the half-twist throttle. Range: 31-38 miles.

### 6.3 Gear Shifting

Use the Shimano thumb shifter to change between the 7 available gears, adapting to different terrains and desired speeds.

## 6.4 Dual Motor Selection

The F2 Pro features dual motors (front and rear). A selector switch allows you to engage either a single motor (rear) or both motors for increased power and traction. For optimal performance on challenging terrains like sand or steep inclines, engaging both motors is recommended.

## 6.5 Riding on Various Terrains

The 20" x 4.0" fat tires and dual motor system make the F2 Pro suitable for diverse environments:

- **Sand/Snow/Mud:** Engage dual motors and consider slightly lowering tire pressure for improved traction.
- **City Streets/Roads:** Utilize pedal assist modes for efficient commuting.
- **Off-road/Mountain:** The dual suspension and powerful motor are designed to handle rough and uneven paths.

Your browser does not support the video tag.

*Video 6.1: Freego Electric Bike for Adults. This video provides a general overview of the Freego electric bike in action, showcasing its versatility across different environments.*

Your browser does not support the video tag.

*Video 6.2: Freego F3 Pro Dual Motor Dual Battery Ebike Review. This detailed review demonstrates the F2 Pro's performance in speed tests, hill climbing, and various terrains, including sand dunes. It highlights the capabilities of the dual motor and dual battery system.*

## 7. MAINTENANCE

---

Regular maintenance ensures the longevity and safe operation of your Freego F2 Pro.

- **Cleaning:** Regularly clean your e-bike, especially after riding in wet, muddy, or sandy conditions. Use mild soap and water, avoiding direct high-pressure water jets on electrical components.
- **Lubrication:** Keep the chain and other moving parts lubricated.
- **Tire Pressure:** Maintain correct tire pressure as specified on the tire sidewall. Adjust pressure for different terrains (lower pressure for soft surfaces like sand).
- **Brakes:** Check brake pads for wear and ensure proper brake lever function. Adjust as needed.
- **Battery Care:** Store the battery in a cool, dry place. Charge it regularly, even if not in use, to maintain battery health. If using both batteries in parallel, ensure both are fully charged to the same exact amount to prevent imbalance.
- **Fasteners:** Periodically check all bolts, nuts, and quick-release levers for tightness.

## 8. TROUBLESHOOTING

---

This section covers common issues and their potential solutions.

Problem	Possible Cause	Solution
E-bike does not power on	Low battery, loose battery connection, power button issue	Charge battery, ensure battery is securely seated, check power button connection.
Motor not assisting/working	Pedal assist level too low, throttle not engaged, motor connection issue, brake lever sensor engaged	Increase pedal assist level, engage throttle, check motor cables, ensure brake levers are fully released.

Problem	Possible Cause	Solution
Brakes feel weak	Worn brake pads, air in hydraulic lines, misaligned calipers	Inspect/replace brake pads, bleed hydraulic lines (professional service recommended), adjust calipers.
Unusual noises during ride	Loose components, chain issues, worn bearings	Check all fasteners, lubricate chain, inspect for worn parts.

For issues not listed here or if troubleshooting steps do not resolve the problem, please contact Freego customer support.

## 9. SPECIFICATIONS

Feature	Specification
Bike Type	Electric Bike, Road Bike, Mountain Bike
Age Range	Adult
Motor	1400W (Peak) Brushless Motor, 80 Nm Torque
Battery	48V/22.5Ah Removable Lithium-Ion (UL Certified)
Top Speed	Up to 34 MPH
Range (Pedal Assist)	38-50 miles
Range (Pure Electric)	31-38 miles
Wheel Size	20 Inches
Tires	20" x 4.0" Fat Tires
Frame Material	High-strength steel pipe
Suspension Type	Dual (Front Fork & Rear Shock Absorber)
Brake Style	Dual Hydraulic Disc Brakes (180mm rotors)
Number of Speeds	7 (Shimano Derailleur)
Maximum Weight Recommendation	330 Pounds
Recommended User Height	63 - 76 inches (5'3" - 6'4")
Item Weight	77 Pounds
Lithium Battery Energy Content	1080 Watt Hours

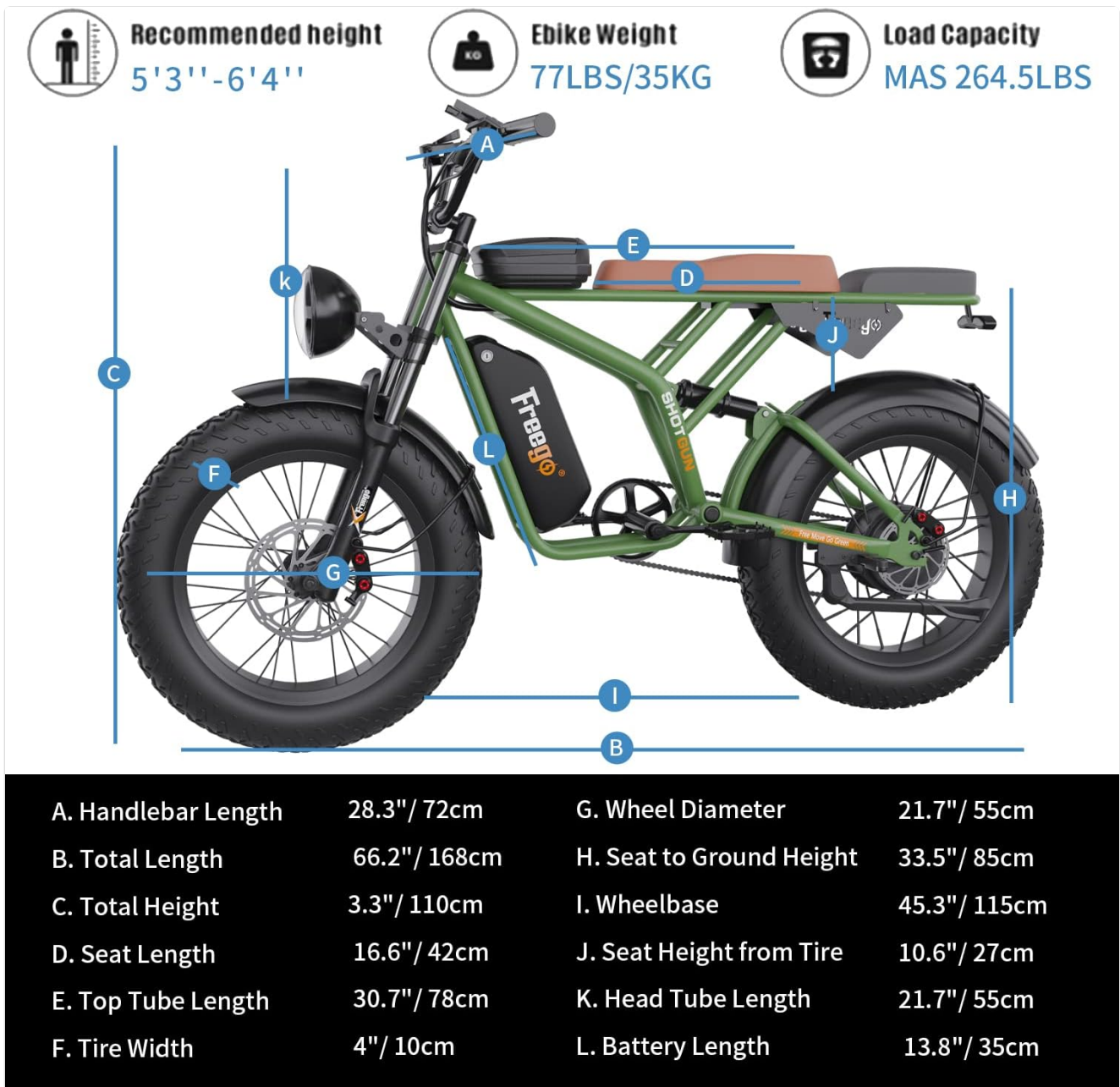


Figure 9.1: Freego F2 Pro dimensions diagram, showing key measurements such as handlebar length, total length, total height, seat height, and tire width.

## 10. WARRANTY AND SUPPORT

Freego provides an 18-month limited warranty for the F2 Pro Electric Motorcycle Dirt Bike. For warranty claims, technical support, or any inquiries, please contact Freego customer service.

- **Warranty Period:** 18 months
- **Contact Information:** Refer to the Freego Official Store or the contact details provided in your package for customer support.