

soges EU1-10CZZS05-3-80WT

soges Height-Adjustable Computer Desk with Wheels User Manual

Model: EU1-10CZZS05-3-80WT

1. INTRODUCTION

Thank you for purchasing the soges Height-Adjustable Computer Desk with Wheels. This manual provides essential information for the safe assembly, operation, and maintenance of your new desk. Please read these instructions carefully before use and retain them for future reference.



Image 1: soges Height-Adjustable Computer Desk with Wheels. This image shows the desk with a laptop, coffee cup, and other items, highlighting its functionality.

2. SAFETY INFORMATION

- Ensure all parts are present and undamaged before assembly. Do not use if any parts are missing or broken.
- Assemble the desk on a soft, clean surface to prevent scratches.
- Do not overtighten screws during assembly to avoid damaging the material.
- Keep small parts away from children to prevent choking hazards.
- Do not exceed the maximum weight capacity of 77.2 lbs (35 kg).
- Always lock the wheels when the desk is in a stationary position to prevent accidental movement.
- Avoid placing hot items directly on the desk surface without protection.

3. PACKAGE CONTENTS

Please verify that all components are included in your package. If any parts are missing or damaged, please contact customer support.

- Desktop Panel with Tablet Slot
- Adjustable Height Support Legs (2)
- Base Legs with Wheels (2)
- Connecting Bar
- Rotary Adjustment Knobs (2)
- Assembly Hardware (screws, wrench, etc.)
- Instruction Manual

4. SETUP AND ASSEMBLY

Assembly is required for this product. It is recommended that two people assemble the desk. All necessary assembly tools are included.

1. **Unpack Components:** Carefully remove all parts from the packaging and lay them out on a soft, flat surface. Check against the package contents list.
2. **Attach Wheels to Base Legs:** Insert the wheels into the designated holes at the bottom of the base legs. Ensure they are securely fitted. Two wheels can be locked, and two rotate 360 degrees.
3. **Connect Support Legs to Base Legs:** Attach the adjustable height support legs to the base legs using the provided screws and tools.
4. **Install Connecting Bar:** Secure the connecting bar between the two support legs to enhance stability.
5. **Attach Desktop Panel:** Place the desktop panel onto the top of the support legs. Align the pre-drilled holes and secure the desktop using the remaining screws.
6. **Insert Rotary Adjustment Knobs:** Screw the rotary adjustment knobs into the side of the support legs. These will be used for height adjustment.



Image 2: Desk Dimensions. This diagram illustrates the overall dimensions of the desk, including height, width, and depth, as well as the tablet slot size.

5. OPERATING INSTRUCTIONS

5.1 Height Adjustment

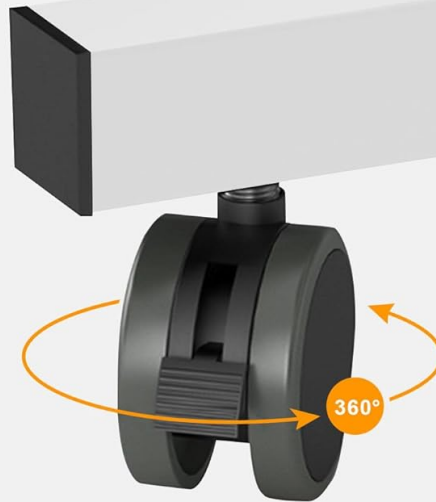
The desk's height can be adjusted to suit your needs, ranging from 27.95 inches to 35.43 inches (71 cm to 90 cm).

1. **Unlock:** Loosen the rotary adjustment knobs on both support legs by turning them counter-clockwise.
2. **Adjust Height:** Gently raise or lower the desktop to your desired height. Ensure both sides are adjusted evenly.
3. **Lock:** Once the desired height is reached, tighten the rotary adjustment knobs by turning them clockwise until secure. Ensure the desk is stable before placing items on it.



Moving Wheels

Two Wheels Can Be Locked,
Two Wheels Rotate 360°



Built In Slot

Mobile Phones And Tablets
Can Be Placed

Image 3: Rotary Adjustment. This image highlights the rotary knob used to adjust the desk's height, showing the adjustable range.

5.2 Moving the Desk

The desk is equipped with four wheels for easy mobility. Two of these wheels can be locked for stability.

- **To Move:** Unlock the two lockable wheels by flipping their levers. Gently push the desk to its new location.
- **To Secure:** Once the desk is in position, lock the two lockable wheels by flipping their levers back. This prevents unintended movement.



Image 4: Moving Wheels and Built-in Slot. This image details the design of the desk's wheels, including the 360-degree rotation feature, and the integrated slot for tablets or mobile phones.

5.3 Using the Built-in Slot

The desktop features an integrated incision designed to hold tablets, iPads, or mobile phones, providing a convenient viewing angle.

- Simply place your device into the slot. Ensure the device is stable and does not obstruct your workspace.

6. MAINTENANCE

To ensure the longevity and appearance of your soges computer desk, follow these simple maintenance guidelines:

- **Cleaning:** Wipe the desk surface and frame with a damp cloth. Avoid using harsh chemicals or abrasive cleaners, as these can damage the finish.

- **Spills:** Clean up spills immediately to prevent staining or damage to the wood material.
- **Hardware:** Periodically check all screws and connections to ensure they remain tight. Retighten if necessary.
- **Wheels:** Keep the wheels free of debris to ensure smooth movement.

7. TROUBLESHOOTING

If you encounter any issues with your desk, please refer to the following common solutions:

- **Desk is wobbly:** Ensure all screws are securely tightened. Check that the desk is on a level surface.
- **Difficulty adjusting height:** Loosen the rotary adjustment knobs sufficiently before attempting to adjust. Ensure no weight is pressing down on the desk during adjustment.
- **Wheels not moving smoothly:** Check for any debris (hair, dust, etc.) caught in the wheels and remove it. Ensure the wheel locks are disengaged.
- **Missing parts:** If parts are missing upon arrival, please contact soges customer support immediately for assistance.

8. SPECIFICATIONS

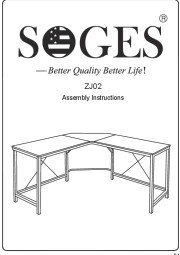
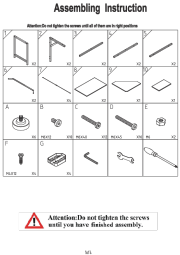


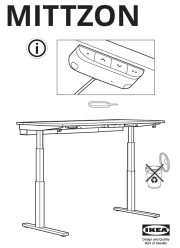
Feature	Detail
Brand	soges
Model Number	EU1-10CZZS05-3-80WT
Product Dimensions (D x W x H)	15.7" x 31.5" x (27.95"-35.43")
Adjustable Height Range	27.95" to 35.43" (71 cm to 90 cm)
Color	White
Material	Engineered Wood (Top), Metal (Base)
Maximum Weight Recommendation	77.2 lbs (35 kg)
Special Features	Adjustable Height, Moving Wheels, Built-in Tablet/Phone Slot
Assembly Required	Yes (Tools Included)
Product Care Instructions	Wipe with Damp Cloth

9. WARRANTY AND SUPPORT

soges is committed to providing quality products. For any questions, concerns, or warranty information regarding your product, please contact soges customer support through the retailer where the product was purchased or visit the official soges brand store.

soges Brand Store: <https://www.amazon.com/stores/soges/page/6EF470C8-636C-47F2-95A6-186C1FCB56E4>

Related Documents - EU1-10CZZS05-3-80WT

	<p>SOGES ZJ02 L-Shaped Desk Assembly Instructions</p> <p>Step-by-step assembly guide for the SOGES ZJ02 L-shaped desk, including parts list, hardware details, and assembly steps. Learn how to build your SOGES desk efficiently.</p>
	<p>Soges L-Shaped Desk Assembly Instructions</p> <p>Step-by-step assembly guide for the Soges L-Shaped Desk, detailing parts and assembly process for a sturdy corner office desk.</p>
	<p>ICE COOREL K9 Gaming Laptop Cooler - Product Manual</p> <p>Official product manual for the ICE COOREL K9 Gaming Laptop Cooler. Features include RGB lighting, multiple fan speeds, USB ports, and adjustable height. Learn about product characteristics, specifications, and packing list.</p>
	<p>ErGear Electric Standing Desk Installation Guide EGESD5V-3</p> <p>Official installation guide for the ErGear Electric Standing Desk with Drawer (Model EGESD5V-3). Learn how to assemble and set up your adjustable height sit-stand desk.</p>
	<p>MITTZON Electric Sit/Stand Desk - User Manual and Instructions</p> <p>Comprehensive user manual for the IKEA MITTZON electric sit/stand desk. Includes installation, operation, safety guidelines, maintenance, troubleshooting, and technical specifications.</p>
	<p>IKEA UPPSPEL Height Adjustable Desk User Manual</p> <p>Comprehensive user manual for the IKEA UPPSPEL height-adjustable desk, covering setup, operation, safety precautions, troubleshooting, and product specifications.</p>