

GX-230828-49880

Instruction Manual for Generic Case for INOI Note 13S Phone

Model: GX-230828-49880

INTRODUCTION

This manual provides instructions for the installation, operation, and maintenance of your Generic Case for INOI Note 13S phone, which includes a tempered glass screen protector. Please read this manual carefully before use to ensure proper application and functionality.

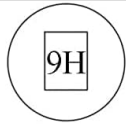
WHAT'S IN THE BOX

- 1 x Phone Case (Hard PC + Soft Silicone)
- 1 x Tempered Glass Screen Protector

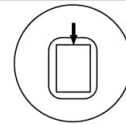
SETUP AND INSTALLATION

1. Installing the Tempered Glass Screen Protector

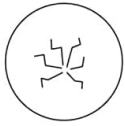
1. **Clean the Phone Screen:** Use a microfiber cloth to thoroughly clean the INOI Note 13S phone screen, removing all dust, smudges, and fingerprints. Ensure the screen is completely dry.
2. **Align the Protector:** Carefully peel off the protective film from the adhesive side of the tempered glass. Align the protector with the phone's screen, ensuring cutouts for the camera and sensors match.
3. **Apply the Protector:** Gently lower the tempered glass onto the screen. It will adhere automatically. If bubbles appear, gently push them towards the edges with a soft cloth or squeegee.



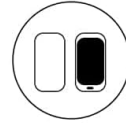
9H High Hardness



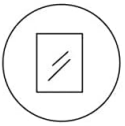
Perfect Adhesion



Shatterproof



Case Friendly



99.9% Super Transparency



Anti-fingerprint

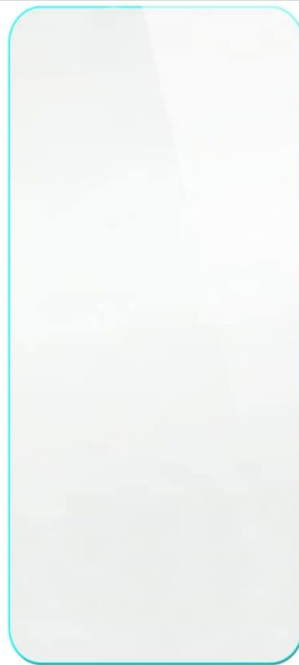


Image: Features of the tempered glass screen protector, including 9H high hardness, perfect adhesion, shatterproof design, case-friendly fit, 99.9% super transparency, and anti-fingerprint properties.



Scratch Proof

Scratch proof screen effectively avoids sharp objects scratching or abrasion



Image: Demonstration of the tempered glass screen protector's scratch-proof capability, showing resistance to sharp

objects.

2. Installing the Phone Case

1. **Insert Phone:** Gently place your INOI Note 13S phone into the soft silicone frame of the case.
2. **Secure Fit:** Ensure all edges of the phone are securely seated within the case. The hard PC backplane will provide additional rigidity.
3. **Check Cutouts:** Verify that all precision cutouts for ports, buttons, and speakers align correctly, allowing full access to all phone features.



Image: Close-up of the phone case highlighting its shockproof design with a soft silicone frame, hard PC backplane, thickened four corners, and a silicone buffer layer for screen and camera protection.

OPERATING INSTRUCTIONS

Using the 360° Rotatable Ring Holder

The integrated ring holder provides enhanced grip and serves as a kickstand for hands-free viewing.

- **For Grip:** Slide your finger through the ring to secure your phone, reducing the risk of drops.
- **For Stand Function:** Rotate the ring to your desired angle (up to 360°) and prop your phone on a flat surface for comfortable video watching or video calls. The ring can also rotate 180° for different viewing angles.
- **One-Hand Operation:** The ring holder assists in reaching more areas of the screen with one hand.

One-Hand Operation

Touch more spots on the screen

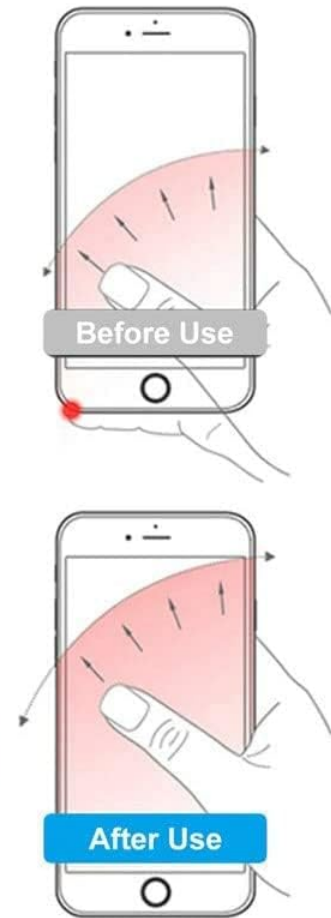


Image: Illustration demonstrating improved one-hand operation and reach on the phone screen with the use of the ring holder.

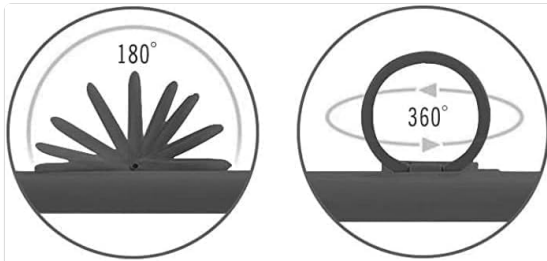


Image: Detailed view of the 360-degree rotatable ring holder integrated into the phone case.

Using the Magnetic Car Mount Function

The case features a built-in metal plate compatible with magnetic car mount holders (not included).

- **Attachment:** Simply place the back of the phone case onto a magnetic car mount holder. The case will adhere directly without the need for additional patches.
- **Note:** This product does not include a magnetic car mount. Wireless charging may not be supported while the phone is in the case due to the metal plate.



SUPPORT MAGNETIC CAR MOUNT

Not include magnetic car mount.
not support wireless charge



Image: Illustration showing the phone case's compatibility with a magnetic car mount, indicating the 180° and 360° rotation capabilities of the ring holder.

MAINTENANCE

- **Cleaning the Case:** Wipe the phone case with a soft, damp cloth to remove dust and smudges. Avoid harsh chemicals or abrasive cleaners.
- **Cleaning the Screen Protector:** Use a screen cleaner specifically designed for electronics and a microfiber cloth to clean the tempered glass.
- **Avoid Extreme Conditions:** Do not expose the case or screen protector to extreme temperatures or direct sunlight for prolonged periods.

TROUBLESHOOTING

- **Screen Protector Bubbles:** If bubbles persist after installation, gently lift the nearest edge of the protector and reapply, pushing bubbles out as you go. Small bubbles may disappear naturally within 24-48 hours.
- **Case Fit Issues:** Ensure your phone model is specifically the INOI Note 13S. If the case does not fit correctly, re-check the phone's positioning within the case.
- **Magnetic Mount Adhesion:** If the case does not adhere strongly to a magnetic car mount, ensure the car mount itself is functioning correctly and is sufficiently strong.

SPECIFICATIONS

Brand	Generic
Compatible Phone Model	INOI Note 13S
Model Number	GX-230828-49880
Material (Case)	Hard PC (Polycarbonate) + Soft Silicone (TPU)
Material (Screen Protector)	Tempered Glass
Features	360° Rotatable Ring Holder, Magnetic Car Mount Compatible, Shockproof, Scratch-proof, Anti-fingerprint, Marble Pattern
Water Resistance Level	Not Water Resistant
Item Dimensions	0.39 x 0.39 x 0.39 inches (approximate, for case)

WARRANTY AND SUPPORT

For warranty information or product support, please refer to the seller's policies on the purchase platform or contact the manufacturer directly. This manual does not provide specific warranty details.