



Manuals.plus /

- › SHUTTER WORKS /
- › SHUTTER WORKS Plantation Shutters User Manual

SHUTTER WORKS DJD0828

SHUTTER WORKS Plantation Shutters User Manual

Model: DJD0828

1. PRODUCT OVERVIEW

SHUTTER WORKS Plantation Shutters are designed for interior windows, offering efficient light control, enhanced privacy, and a timeless aesthetic. These shutters are waterproof and durable, crafted from premium, North-American sourced materials to fit your exact needs.



Image: SHUTTER WORKS Plantation Shutters installed in a room, showcasing their ability to control light and enhance interior decor.

2. SAFETY INFORMATION

Please read and understand all safety instructions before installation and use. Failure to follow these instructions may result in injury or damage to the product.

- Always use appropriate personal protective equipment (PPE) during installation, such as safety glasses and gloves.
- Ensure all mounting hardware is securely fastened to a stable structure.
- Keep small parts and tools out of reach of children and pets.
- Do not hang or climb on the shutters.
- If any part of the shutter is damaged, do not attempt to install or operate it. Contact customer support.

3. INSTALLATION GUIDE (SETUP)

SHUTTER WORKS Plantation Shutters are designed for easy and fast installation. Basic tools, including a drill, are required.

3.1. Before You Begin

- **Verify Measurements:** Ensure your window measurements match the ordered shutter dimensions. Precise measurements are crucial for a proper fit.
- **Unpack Contents:** Carefully unpack all components and verify that all mounting hardware is included.
- **Gather Tools:** You will need a drill, screwdriver, measuring tape, pencil, and level.

3.2. Installation Steps

1. **Prepare the Window Opening:** Clean the window frame and ensure it is free of debris.
2. **Assemble the Frame (if applicable):** Depending on your chosen frame option (Flat Z, Decorative Z, L-Frame), assemble the frame components according to the provided instructions.
3. **Position the Frame:** Place the assembled frame into the window opening. Use a level to ensure it is perfectly plumb and square.
4. **Secure the Frame:** Using the provided mounting hardware, drill pilot holes and secure the frame to the window opening. Ensure the frame is firmly attached and does not wobble.
5. **Attach Shutter Panels:** Carefully attach the shutter panels to the frame using the hinges. Ensure the hinges are aligned and the panels swing freely.
6. **Test Operation:** Open and close the shutter panels and adjust the louvers to ensure smooth operation.



Image: Detail of a shutter hinge, illustrating the hardware used for panel attachment.

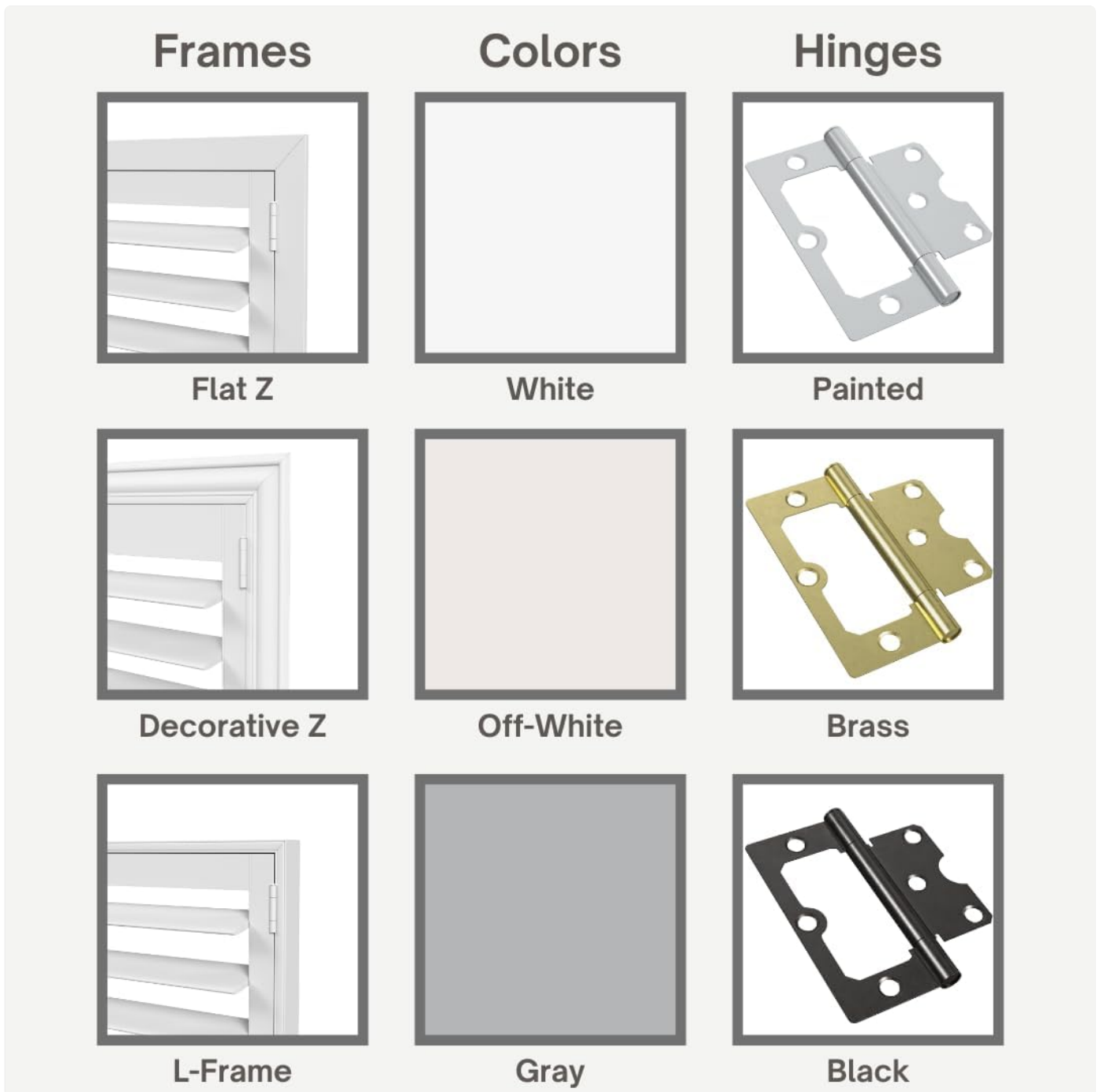


Image: Various customization options including frame types, colors, and hinge finishes.

4. OPERATING INSTRUCTIONS

Your SHUTTER WORKS Plantation Shutters are designed for intuitive operation, allowing precise control over light and privacy.

- **Opening/Closing Panels:** Gently push or pull the shutter panels to open or close them. Ensure they latch securely when closed.
- **Adjusting Louvers:** The louvers can be adjusted by gently tilting them up or down. For full closure, ensure all louvers are tilted completely in one direction (either up or down) to block light and maximize privacy.
- **Split Tilt Feature:** If your shutters include a split tilt feature, you can adjust the upper and lower sections of the louvers independently. This allows for light control in one section while maintaining privacy in another.

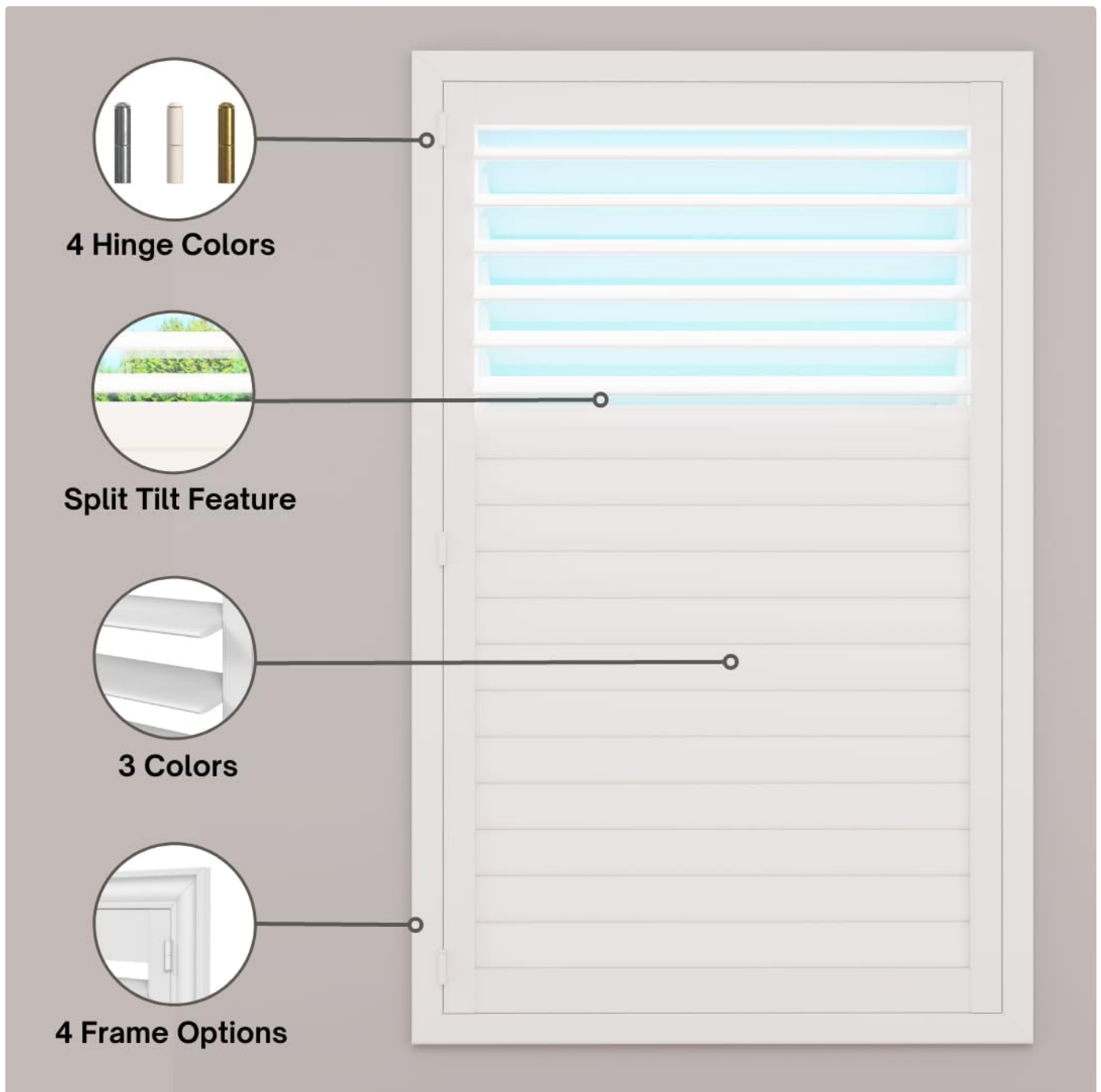


Image: Key features of the shutters, including the split tilt mechanism for independent louver control.

5. MAINTENANCE AND CARE

To ensure the longevity and appearance of your SHUTTER WORKS Plantation Shutters, follow these simple care instructions:

- **Cleaning:** Spot clean with a soft, damp cloth. For stubborn marks, a mild soap solution can be used. Avoid abrasive cleaners or harsh chemicals, as these can damage the finish.
- **Dusting:** Regularly dust the louvers and frame with a feather duster or a soft, dry cloth.
- **Hinge Lubrication:** If hinges become stiff over time, apply a small amount of silicone-based lubricant to ensure smooth operation.
- **Avoid Excessive Force:** Do not force louvers or panels. If they are stiff, check for obstructions or contact support.

6. TROUBLESHOOTING

This section addresses common issues you might encounter with your shutters.

Problem	Possible Cause	Solution
Shutters do not close tightly or have gaps.	Improper frame installation; uneven window opening; minor manufacturing variance.	Ensure the frame is square and plumb. For minor gaps, consider using caulk or thin spacers as needed. Re-check installation steps.
Louvers are stiff or difficult to adjust.	Dust accumulation; lack of lubrication; obstruction.	Clean louvers and tilt rods. Apply silicone-based lubricant to pivot points. Check for any foreign objects.
Panels do not swing smoothly.	Misaligned hinges; debris in hinges; loose screws.	Check hinge alignment and tighten any loose screws. Clean hinges. Lubricate if necessary.

7. PRODUCT SPECIFICATIONS

- **Brand:** SHUTTER WORKS
- **Model Number:** DJD0828
- **ASIN:** B0CGXST2JP
- **Material:** Waterproof (implied from product title, likely PVC/vinyl as per review)
- **Intended Use:** Interior Windows
- **Assembly:** Required (Mounting Hardware Included)
- **Care Instructions:** Spot Clean
- **Country of Origin:** USA
- **Key Features:**
 - Efficient Light Control & Enhanced Privacy
 - Waterproof and Durable
 - Easy & Fast Installation
 - Fully Customizable Features (Frame options, colors, hinge colors, split tilt)

8. WARRANTY AND SUPPORT

For any questions, concerns, or support regarding your SHUTTER WORKS Plantation Shutters, please contact the manufacturer directly.

Manufacturer: Shutter Works

Please refer to your purchase documentation for specific warranty details. Keep your proof of purchase for any warranty claims.

