

Gofunly X6

Gofunly Instant Kids Camera X6 User Manual

Model: X6

1. INTRODUCTION

Thank you for choosing the Gofunly Instant Kids Camera X6. This camera is designed for children aged 3 to 12 years, offering a fun and interactive way to capture memories. It features instant inkless printing, 1080P video recording, and various creative functions. Please read this manual carefully to ensure proper use and to maximize your child's enjoyment of the camera.

2. PRODUCT OVERVIEW

2.1 Package Contents

The package includes the following items:

- 1 x Gofunly Instant Kids Camera X6
- 1 x 32GB Micro SD Card
- 3 x Rolls of Printing Paper
- 5 x Color Pencils
- 1 x Keychain
- 1 x USB Charging Cable
- 1 x Cartoon Sticker Sheet
- 1 x User Manual



Image: Contents of the Gofunly Instant Kids Camera X6 package.

2.2 Key Features

- **2.4-inch IPS Screen:** Clear display for viewing photos and videos.
- **1080P HD Video Recording:** Capture high-definition video moments.
- **Inkless Instant Printing:** Print black and white photos directly from the camera.
- **16x Digital Zoom:** Magnify subjects for closer shots.
- **Timed Photos & Continuous Shooting:** Options for self-portraits and action sequences.
- **Fun Photo Frames & Filters:** Enhance creativity with various built-in effects.
- **4 Puzzle Games:** Entertainment beyond photography.
- **1000mAh Rechargeable Battery:** Provides extended usage time.
- **32GB Micro SD Card:** Ample storage for thousands of photos and videos.

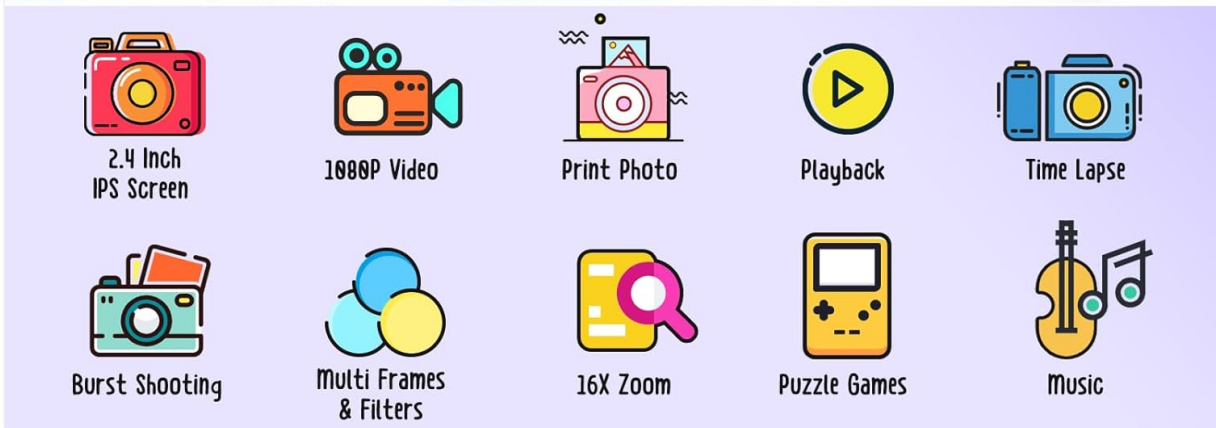


Image: Overview of the camera's main features.

3. SETUP

3.1 Charging the Battery

Before first use, fully charge the camera's built-in 1000mAh lithium-ion battery. Connect the camera to a USB power source (e.g., computer, wall adapter) using the provided USB cable. The charging indicator light will show the charging status and turn off when fully charged.

3.2 Inserting the Micro SD Card

The camera comes with a 32GB Micro SD card. Locate the Micro SD card slot on the side of the camera. Insert the card with the gold contacts facing down until it clicks into place. To remove, gently push the card in until it springs out.

3.3 Loading Printing Paper

The camera uses thermal printing paper. Follow these steps to load a new roll:

1. Gently push the latch on the side of the camera upwards to open the paper compartment.
2. Insert a new roll of printing paper, ensuring the paper feeds out from the top of the roll.

3. Close the paper compartment cover until it clicks securely into place. Ensure a small portion of paper extends from the slot.



Image: Steps for loading printing paper into the camera.

4. OPERATING INSTRUCTIONS

4.1 Power On/Off

Press and hold the Power button (usually marked with an \odot symbol) for a few seconds to turn the camera on or off.

4.2 Taking Photos

In photo mode, press the Shutter button (usually a large circular button) to take a picture. The camera will automatically print the photo if instant print is enabled. You can also choose to save photos to the SD card without printing.

4.3 Recording Videos

Switch to video mode using the Mode button. Press the Shutter button to start recording and press it again to stop. Videos are saved to the Micro SD card.

1080P HD VIDEO RECORDING



Record Life and Beauty



16X ZOOM



Image: Demonstrating 1080P HD video recording and 16x digital zoom capabilities.

4.4 Using Digital Zoom

While in photo or video mode, use the Up/Down navigation buttons to adjust the digital zoom level (up to 16x).

4.5 Applying Frames and Filters

Before taking a photo, navigate through the menu options to select various fun frames and filters to add creative effects to your pictures.

DIFFERENT FUNNY FRAMES & PHOTO FILTERS



Image: Examples of fun frames and filters available on the camera.

4.6 Timed Photos and Continuous Shooting

Access the camera settings to enable timed photo mode (e.g., 3s, 5s, 10s delay) for self-portraits or group shots. Continuous shooting mode allows you to capture multiple photos in quick succession.



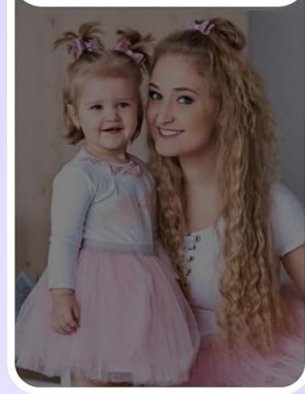
FLASHLIGHT



FLASH ON



FLASH OFF



TIME LAPSE 3S/5S/10S



BURST SHOOTING



Image: Demonstrating time-lapse and continuous shooting functions.

4.7 Playing Games

The camera includes 4 built-in puzzle games. Navigate to the game menu using the Mode button and select a game to play.

4.8 Transferring Files

Connect the camera to a computer using the USB cable. The camera will appear as a removable disk, allowing you to transfer photos and videos from the 32GB Micro SD card to your computer. Alternatively, you can remove the Micro SD card and use a card reader (not included) to transfer files.

4.9 DIY Coloring

After printing black and white photos, use the included color pencils to add your own creative touch and personalize the images.

DIY COLOR PEN

DIY Your Instant Photos (Black & White Photos)



Image: DIY coloring of instant prints using the provided color pencils.

5. MAINTENANCE

5.1 Cleaning the Camera

Use a soft, dry cloth to clean the camera body. For the lens and screen, use a specialized lens cleaning cloth. Avoid using liquid cleaners or abrasive materials.

5.2 Battery Care

To prolong battery life, avoid fully discharging the battery frequently. Charge the camera regularly, even if not in use for extended periods. Store the camera in a cool, dry place.

5.3 Paper Storage

Store unused printing paper rolls in a cool, dry place away from direct sunlight to prevent degradation of the thermal coating.

6. TROUBLESHOOTING

6.1 Camera Will Not Turn On

- Ensure the battery is charged. Connect the camera to a power source and try again.
- Press and hold the Power button for a longer duration (5-10 seconds).

6.2 Photos Are Blurry or Poor Quality

- Ensure the lens is clean and free from smudges.
- Check lighting conditions. The camera performs best in well-lit environments.
- Ensure the subject is within the optimal focus range.

6.3 Paper Not Printing or Jammed

- Verify that the printing paper is loaded correctly and not upside down.
- Check if the paper compartment is securely closed.
- Ensure there is enough paper left on the roll.
- Carefully remove any jammed paper by opening the compartment.

6.4 Cannot Transfer Files to Computer

- Ensure the USB cable is securely connected to both the camera and the computer.
- Try a different USB port on your computer.
- Restart both the camera and the computer.
- Ensure the Micro SD card is properly inserted and recognized by the camera.

7. SPECIFICATIONS

Model Name	X6
Manufacturer	Gofunly
Screen Size	2.4 inches IPS
Video Resolution	1080P HD
Digital Zoom	Up to 16x
Printing Type	Inkless Thermal Printing
Film Color	Black and White
Battery	1000mAh Lithium Polymer (included)
Storage	32GB Micro SD Card (included)
Special Function	Time-lapse
Max Shutter Speed	0.001 seconds
Shutter Type	Mechanical
Product Weight	355 Grams
Package Dimensions	19.6 x 11.7 x 6.3 cm

8. WARRANTY AND SUPPORT

For warranty information or technical support, please refer to the contact details provided with your purchase or visit the official Gofunly website. Keep your purchase receipt as proof of purchase.