

BRILONER 2116014



BRILONER LED Bathroom Mirror Light Instruction Manual

Model: 2116014

1. INTRODUCTION

Thank you for choosing the BRILONER LED Bathroom Mirror Light. This manual provides important information regarding the safe installation, operation, and maintenance of your new light fixture. Please read these instructions carefully before installation and retain them for future reference.

This LED mirror light is designed for modern bathrooms, offering neutral white light and protection against splashes, making it suitable for damp environments.

2. SAFETY INSTRUCTIONS

- **Electrical Safety:** Installation must be performed by a qualified electrician in accordance with all local and national wiring regulations. Ensure the main power supply is switched off before commencing any installation or maintenance work.
- **IP44 Rating:** This product is rated IP44, meaning it is protected against solid objects over 1mm and against splashing water from any direction. It is suitable for bathroom zones 2 and outside zones. Do not install in bathroom zone 0 or 1.
- **Voltage:** This fixture operates on 230 Volts (AC). Verify your household voltage matches this requirement.
- **Light Source:** The LED light source is integrated and not replaceable by the user. Do not attempt to open or modify the LED module.
- **Cleaning:** Always disconnect power before cleaning. Use a soft, dry cloth. Do not use abrasive cleaners or solvents.
- **Damage:** Do not operate the fixture if any part is damaged. Contact customer support for assistance.

3. PACKAGE CONTENTS

Please check that all components are present and undamaged:

- BRILONER LED Bathroom Mirror Light (Model 2116014)
- Mounting hardware (screws, wall plugs)

- Instruction Manual

4. PRODUCT OVERVIEW AND DIMENSIONS

The BRILONER LED Bathroom Mirror Light features a sleek design with a matt chrome finish, providing efficient and uniform illumination.

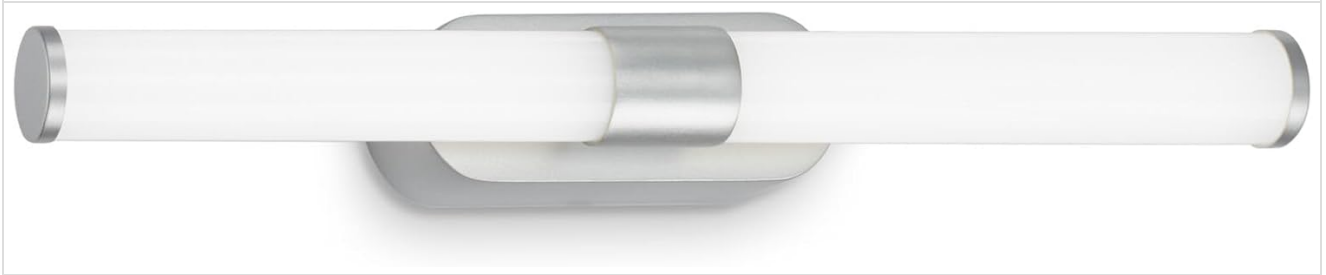


Image 1: Front view of the BRILONER LED Bathroom Mirror Light.



Image 2: Key features highlighting 4000K neutral white light and IP44 splash protection.

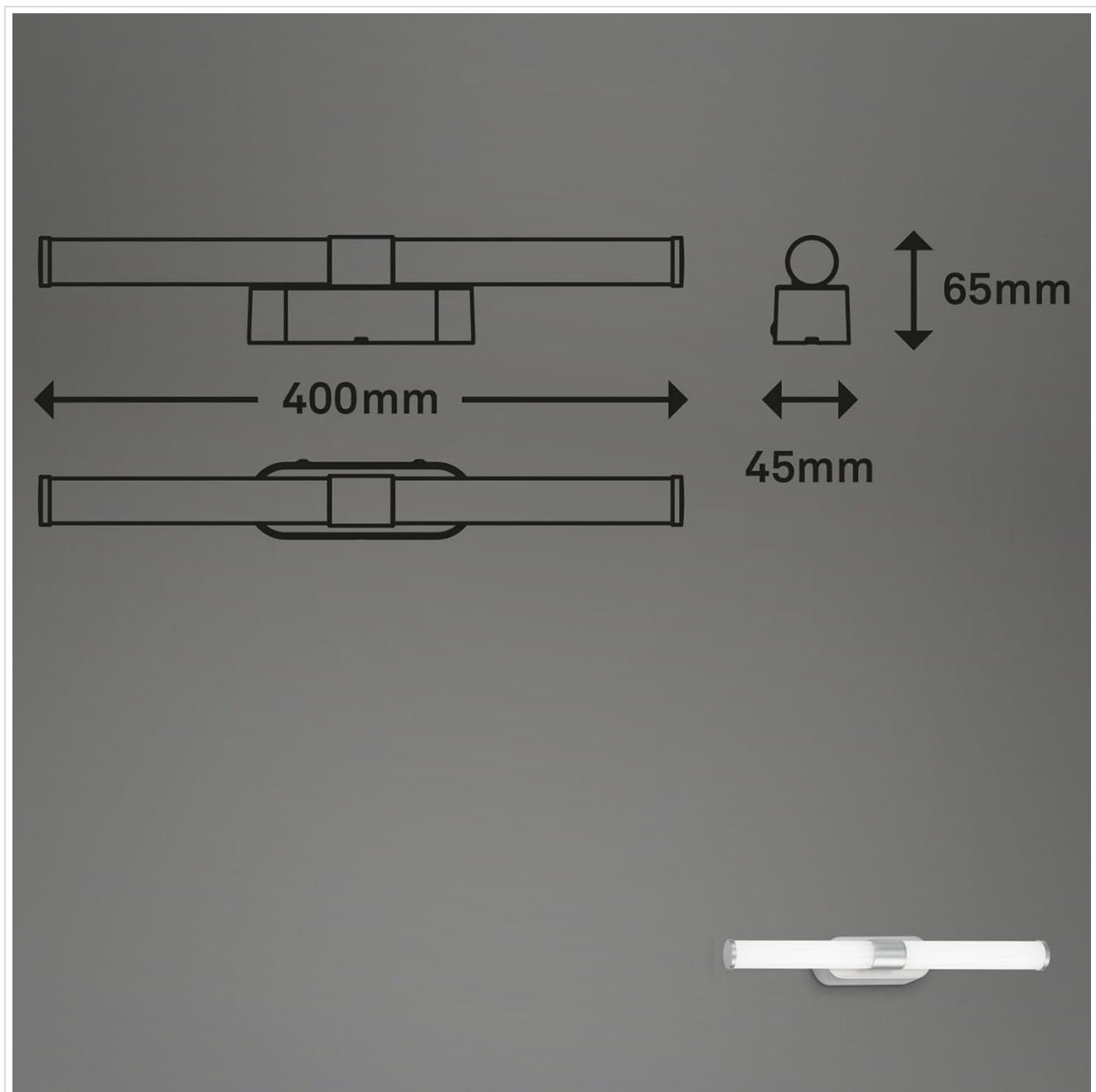


Image 3: Dimensional drawing of the light fixture (400mm length, 65mm height, 45mm depth).

5. INSTALLATION GUIDE

Important: Ensure the main power supply is disconnected before installation. If you are unsure about electrical installation, consult a qualified electrician.

5.1 Preparation

1. Switch off the main power supply at the circuit breaker.
2. Unpack the light fixture and check for any damage.
3. Identify the desired mounting location above or beside your mirror. Ensure there is sufficient space and a suitable electrical connection point.

5.2 Mounting the Fixture

1. Carefully detach the mounting bracket from the light fixture, if applicable.
2. Hold the mounting bracket against the wall at the desired position and mark the drilling points.

3. Drill holes at the marked points using an appropriate drill bit for your wall type.
4. Insert the provided wall plugs into the drilled holes.
5. Secure the mounting bracket to the wall using the provided screws.

5.3 Electrical Connection



Image 4: Internal wiring compartment for electrical connections.

1. Connect the household electrical wires to the terminal block inside the fixture. Ensure correct polarity: Live (L), Neutral (N), and Earth (E) if present.
2. Ensure all connections are secure and properly insulated.
3. Carefully tuck the wires into the wiring compartment, ensuring no wires are pinched.

5.4 Final Assembly

1. Attach the light fixture body to the mounted bracket, ensuring it is securely fastened.
2. Restore power at the circuit breaker.
3. Test the light to ensure it functions correctly.



Image 5: Example installation with two lights mounted vertically beside a mirror.



Image 6: Example installation with one light mounted horizontally above a mirror.

6. OPERATION

The BRILONER LED Bathroom Mirror Light is operated via your standard wall switch. Simply toggle the switch to turn the light on or off.

7. MAINTENANCE AND CARE

- **Cleaning:** To clean the fixture, ensure the power is off. Use a soft, slightly damp cloth. Do not use harsh chemicals, abrasive cleaners, or scouring pads, as these can damage the finish.
- **Inspection:** Periodically check the fixture for any signs of damage or loose connections. If any issues are found, disconnect power and consult a qualified technician.
- **Light Source:** The integrated LED light source is designed for a long lifespan and does not require replacement.

8. TROUBLESHOOTING

Problem	Possible Cause	Solution
Light does not turn on	No power supply	Check the circuit breaker and wall switch. Ensure power is restored.
	Loose wiring connection	Disconnect power and check electrical connections. If unsure, consult a qualified electrician.
	Damaged LED module	The LED module is integrated. If damaged, the entire fixture may need replacement. Contact customer support.
Light flickers	Unstable power supply	Consult a qualified electrician to check your electrical system.
	Loose connection	Disconnect power and check electrical connections.

9. TECHNICAL SPECIFICATIONS

Brand	BRILONER
Model Number	2116014
Dimensions (L x W x H)	40 x 4.5 x 6.5 cm
Weight	147 g
Material	Plastic
Finish Type	Chrome Matt
Voltage	230 Volts (AC)
Wattage	7 Watts
Luminous Flux	690 lumens
Color Temperature	4000 Kelvin (Neutral White)
Color Rendering Index (CRI)	Ra >= 80
Lifespan	25,000 hours
Protection Class	IP44 (Splash-proof)
Energy Efficiency Class	F
Installation Type	Wall Mount

10. WARRANTY AND SUPPORT

For warranty information and customer support, please refer to the documentation provided with your purchase or contact your retailer. Keep your proof of purchase for any warranty claims.

For technical assistance or inquiries, please visit the BRILONER website or contact their customer service department.



Related Documents - 2116014

	<p>MAL 3362-116 LED Ceiling Light with Motion Detector - Installation Guide</p> <p>Installation and safety instructions for the Briloner MAL 3362-116 LED ceiling light with integrated motion detector. Features IP44 rating, adjustable sensitivity, time delay, and lux level for indoor use.</p>
	<p>MAL 7032 LED Outdoor Lamp - Mounting and Safety Instructions</p> <p>Comprehensive mounting instructions and safety guidelines for the Briloner MAL 7032 LED outdoor lamp. Learn how to assemble and safely use this IP44 rated, dimmable outdoor lamp.</p>
	<p>Briloner MAL 7479 LED Rechargeable Table Lamp - Safety and Operating Instructions</p> <p>Detailed safety instructions, operating guide, and specifications for the Briloner MAL 7479 LED rechargeable table lamp. Includes information on usage, maintenance, disposal, and features like IP44 rating and USB charging.</p>
	<p>Briloner MAL 769401x LED Lamp Installation and Safety Guide</p> <p>Installation and safety guide for the Briloner MAL 769401x LED lamp, detailing mounting steps, remote control functions, and essential safety precautions for indoor use.</p>
	<p>Briloner MAL 3754 LED Light Fixture: Installation, Operation, and Safety Guide</p> <p>Detailed user manual for the Briloner MAL 3754 LED light fixture, covering installation, safety precautions, remote control functions, troubleshooting, and compliance information.</p>
	<p>Briloner Under-Cabinet LED Light - Assembly, Safety, and Operating Instructions</p> <p>Comprehensive guide for the Briloner Under-Cabinet LED Light (Model 14137306L), covering assembly, safe operation, maintenance, and technical specifications. Ensure proper installation and usage.</p>