

TIMEMORE C2S

TIMEMORE Chestnut C2S Manual Coffee Grinder Instruction Manual

Model: C2S | Brand: TIMEMORE

INTRODUCTION

This manual provides detailed instructions for the proper use and maintenance of your TIMEMORE Chestnut C2S Manual Coffee Grinder. Designed for precision and durability, this grinder features a CNC stainless steel conical burr and an internal adjustable setting to achieve consistent grinds for various brewing methods. Please read this manual thoroughly before first use to ensure optimal performance and longevity of your grinder.



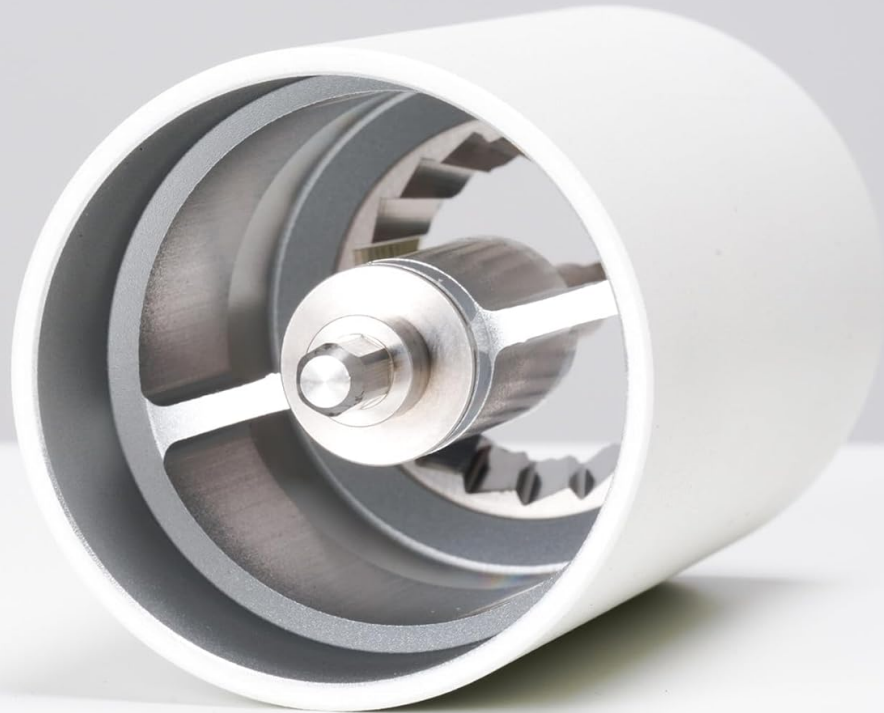
Image: The TIMEMORE Chestnut C2S Manual Coffee Grinder, showcasing its sleek design and key components like the handle and burr set.

PRODUCT OVERVIEW

The TIMEMORE Chestnut C2S is constructed with a full metal unibody, ensuring stability and precision during grinding. Key features include:

- **Full Metal Unibody:** Enhanced durability and accuracy with aluminum alloy processing for both internal and external components.
- **CNC Stainless Steel Conical Burr:** 38mm burr size with 55-58HRC hardness, designed for efficient and uniform grinding.
- **Double Bearing Positioning:** Ensures the central axis remains stable, contributing to consistent grind particle size.
- **Ergonomic Handle:** Designed for comfortable and labor-saving operation.

C2S NEWLY UPGRADED TO FULL METAL INTEGRATED BODY



- Aluminum alloy processing inside and outside of the body, all-metal central axis structure precision and solid to enhance the accuracy of the body.

The top cover and handle are also upgraded to full metal,
Don't worry about cracking the top cover

Image: Close-up view of the TIMEMORE C2S grinder's internal structure, highlighting the full metal integrated body and central axis.



Image: Diagram illustrating the double bearing positioning system within the grinder, which stabilizes the central shaft for consistent grinding.

SETUP

1. **Unpack:** Carefully remove all components from the packaging. Verify that all parts are present: grinder body, handle, and cleaning brush.
2. **Initial Cleaning:** Before first use, it is recommended to clean the burrs and internal components with the included brush to remove any manufacturing residue. Do not wash with water.

3. **Assemble Handle:** Attach the handle to the top shaft of the grinder. Ensure it is securely fitted.

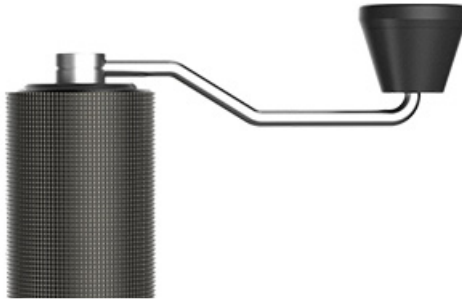


Image: Illustration showing how to attach the handle to the top of the grinder for operation.

OPERATING INSTRUCTIONS

1. Adjusting Grind Coarseness

The TIMEMORE C2S offers approximately 36 levels of grind adjustment, allowing you to achieve the ideal coarseness for various brewing methods.

1. **Access Adjustment Dial:** Remove the handle and the top cover to access the internal adjustment dial.
2. **Set Coarseness:**
 - Rotate the adjustment nut **clockwise** for a finer grind.
 - Rotate the adjustment nut **anti-clockwise** for a coarser grind.

Each click represents a step in coarseness adjustment. Refer to the table below for recommended starting points.

3. **Reassemble:** Once the desired setting is achieved, replace the top cover and handle.



ADJUSTABLE GRIND SETTING

Image: Visual guide showing different grind sizes for French Press (coarse), Pour Over (medium), and Moka Pot (fine), with the adjustment dial indicating settings.



Image: Close-up of the grind adjustment mechanism, showing the numbered clicks for precise setting.

Recommended Grind Settings (Clicks from fully closed)

Brew Method	Grind Type	Recommended Clicks
Espresso	Very Fine	6-9 clicks
Moka Pot	Fine	10-14 clicks
Pour Over	Medium	18-24 clicks
French Press	Coarse	25-30 clicks

Note: These are starting recommendations. Adjust based on your personal preference and specific brewing equipment.

2. Grinding Coffee Beans

1. **Load Beans:** Open the top cover and pour your desired amount of whole coffee beans into the hopper. The grinder has a capacity of 25g.
2. **Attach Handle:** Securely attach the handle.
3. **Grind:** Hold the grinder firmly and turn the handle clockwise. The double bearing system and ergonomic design ensure a smooth and efficient grinding experience with minimal effort.
4. **Collect Grounds:** Once grinding is complete, unscrew the bottom collection cup to retrieve your fresh coffee grounds.



ENERGY-SAVING CRANK HANDLE

- Crank makes both of your hands on a horizontal line

Image: A person demonstrating the use of the energy-saving crank handle on the TIMEMORE C2S grinder.

MAINTENANCE

Regular cleaning ensures the best performance and extends the life of your grinder.

- **Disassembly:** Unscrew the bottom collection cup, then remove the handle and top cover. The internal burr assembly can be carefully disassembled for thorough cleaning.
- **Cleaning:** Use the included brush to remove any residual coffee grounds from the burrs and internal components. An air blower can also be used for fine dust.

- **Important: DO NOT WASH THE GRINDER WITH WATER.** Water can cause rust and damage the burrs and internal mechanisms.
- **Reassembly:** Reassemble all parts in reverse order after cleaning.



Image: A hand using the provided brush to clean the burr assembly of the TIMEMORE C2S grinder. A "No Washing" icon is visible.



No washing



Brush clean



Air blower clean

Image: A visual guide demonstrating correct cleaning methods: "No washing", "Brush clean", and "Air blower clean" for the TIMEMORE C2S grinder.

TROUBLESHOOTING

- **Grinder feels stiff or difficult to turn:**

- Check for blockages: Ensure no large foreign objects are in the burr chamber.
- Clean the burrs: Accumulated coffee oils and fines can cause stiffness. Perform a thorough cleaning as described in the Maintenance section.
- Adjust coarseness: If set too fine, especially for very light roasts, grinding can be harder. Try a slightly coarser setting.

- **Inconsistent grind size:**

- Ensure the adjustment nut is securely tightened to your desired setting.
- Verify the burrs are clean and free of obstructions.

- **Handle detaches during grinding:**

- Ensure the handle is fully seated on the shaft before grinding.

If you encounter issues not covered here, please contact TIMEMORE customer support for assistance.

SPECIFICATIONS

Feature	Detail
Brand	TIMEMORE
Model	C2S
Color	White (as per current product variant)
Material	Aluminum, Stainless Steel
Item Weight	700 Grams (1.54 pounds)
Product Dimensions	5.79"L x 2.05"W x 5.79"H (147mm x 52mm x 147mm)
Burr Type	CNC Stainless Steel Conical Burr

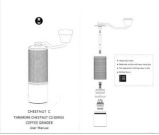

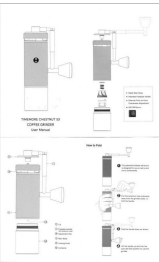
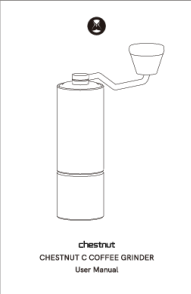
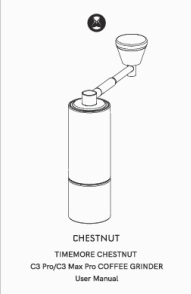

Feature	Detail
Burr Size	38 mm
Grind Settings	Approx. 36 adjustable levels
Capacity	25g (coffee beans)



Image: Diagram showing the dimensions of the TIMEMORE C2S Manual Coffee Grinder in millimeters and inches.

WARRANTY AND SUPPORT

For warranty information and customer support, please refer to the product packaging or contact TIMEMORE directly through their official website or the retailer where the product was purchased. Keep your proof of purchase for warranty claims.

	<p>TIMEMORE Chestnut C3 Series Coffee Grinder User Manual</p> <p>User manual for the TIMEMORE Chestnut C3 Series coffee grinder. Learn how to grind coffee, adjust grind settings for various brewing methods (espresso, pour-over, French press), and find troubleshooting tips. Features include an all-metal body, anti-slip grip, and precise S2C660 burrs.</p>
	<p>TIMEMORE Chestnut C3S Pro & C3 ESP Pro Manual Coffee Grinder User Manual</p> <p>User manual for the TIMEMORE Chestnut C3S Pro and C3 ESP Pro manual coffee grinders, covering features, assembly, folding, grinding, grind adjustment, troubleshooting, and warranty information. Features include an all-metal body, S2C 660 burrs, and a foldable handle.</p>
	<p>TIMEMORE CHESTNUT S3 Coffee Grinder User Manual - Foldable & Adjustable Hand Grinder</p> <p>Official user manual for the TIMEMORE CHESTNUT S3 Coffee Grinder. Learn how to use, adjust grind settings, fold the handle, and troubleshoot this high-quality hand grinder with S2C 890 burrs.</p>
	<p>Timemore Chestnut C Coffee Grinder User Manual</p> <p>User manual for the Timemore Chestnut C Coffee Grinder, detailing its features, assembly, operation, adjustment, and troubleshooting.</p>
	<p>TIMEMORE Chestnut C3 Pro/C3 Max Pro Coffee Grinder User Manual</p> <p>A comprehensive user manual for the TIMEMORE Chestnut C3 Pro and C3 Max Pro coffee grinders, detailing features, folding instructions, grinding operation, grind adjustment, cautions, troubleshooting, and warranty information.</p>
	<p>TIMEMORE Grinder go Portable Electric Grinder User's Manual</p> <p>User's manual for the TIMEMORE Grinder go, a portable electric coffee grinder. Includes product components, operating instructions, grinding degree adjustment, product parameters, and warranty information.</p>

