

Google Pixel 8 (G9BQD)

Google Pixel 8 User Manual

Model: Pixel 8 (G9BQD) | Brand: Google

INTRODUCTION

The Google Pixel 8 is an advanced Android smartphone engineered by Google, designed to offer a seamless and intelligent user experience. It features a powerful camera, robust security measures, and an all-day battery. Leveraging Google AI, the Pixel 8 enhances various functionalities, from photo editing and call screening to providing quick answers and ensuring personal safety.



Image: Front and back view of the Google Pixel 8 smartphone in Obsidian color, showcasing its sleek design and camera bar.

SETUP

1. What's in the Box

Your Google Pixel 8 package includes the following items:

- Google Pixel 8 Smartphone
- SIM Tray Ejector
- Quick Switch Adapter (for data transfer)
- USB Cable (USB-C to USB-C)

2. Initial Power On and Setup

To power on your Pixel 8 for the first time, press and hold the power button located on the right side of the device until the Google logo appears. Follow the on-screen prompts to select your language, connect to Wi-Fi, and set up your Google

account.

3. SIM Card Installation

Locate the SIM card tray on the side of your Pixel 8. Use the provided SIM tray ejector tool to open the tray. Insert your Nano-SIM card into the tray, ensuring it is correctly oriented. Gently push the tray back into the device until it clicks into place.

4. Data Transfer from Old Device

Utilize the included Quick Switch Adapter and USB cable to transfer data from your old smartphone to your new Pixel 8. Connect your old phone to the Pixel 8 using the adapter and cable, then follow the on-screen instructions to migrate contacts, photos, apps, and other data.

OPERATING YOUR PIXEL 8

1. Display and Navigation

The Pixel 8 features a 6.2-inch Actua display with a resolution of 1080 x 2400 pixels and a refresh rate of up to 120 Hz, providing a smooth and vibrant visual experience. Navigate the device using touch gestures or the traditional three-button navigation bar, which can be configured in settings.

Fresh, modern design, with a brilliant display.

6.2-inch high-res
Actua display with
refresh rate up to 120Hz^{3,4}

Dual rear camera
captures memories in
vivid color and detail

Beautifully designed,
with contoured edges
and a satin finish



Image: Visual representation of the Pixel 8's 6.2-inch high-res Actua display, dual rear camera, and contoured edges with a satin finish, highlighting its modern design.

2. Camera Features

The Pixel 8 is equipped with an advanced Pixel Camera system, including a 10.5 MP front camera, a 50 MP rear wide lens, and a 12 MP rear ultrawide lens. Key camera functionalities include:

- **Best Take:** Combines similar photos to ensure everyone looks their best.
- **Macro Focus:** Captures intricate details of small subjects.
- **Audio Magic Eraser:** Reduces unwanted noise in videos, such as cars or construction sounds.
- **Super Res Zoom:** Digital zoom up to 8x for distant subjects.

Amazing photos and videos, every time.

Best Take

Combines similar photos into one where everyone looks their best.¹¹

Macro Focus

Makes even the smallest details look spectacular.

Audio Magic Eraser

Reduces unwanted noise in videos, like cars or construction.¹²



Image: Demonstrates the Pixel 8's camera capabilities, including "Best Take" for group photos, "Macro Focus" for close-up shots, and "Audio Magic Eraser" for video sound enhancement.

3. Google AI Features

Leverage Google's integrated AI for enhanced productivity and convenience:

- **Call Screen:** Helps identify and avoid spam calls.
- **Direct My Call:** Provides optimal times to call businesses and guides you through automated menus.
- **Google Assistant:** Offers hands-free assistance, including holding calls until callers are ready.
- **Live Translate:** Translates languages on the spot for real-time communication.
- **Circle to Search:** Instantly search for anything on your screen by circling, highlighting, or scribbling.

Get help making calls. And avoiding them.

Call Screen
helps you avoid
spammers.¹³

Direct My Call shows
you the best times
to call a business.¹³

Google Assistant
waits on hold for you
until callers are ready.¹³

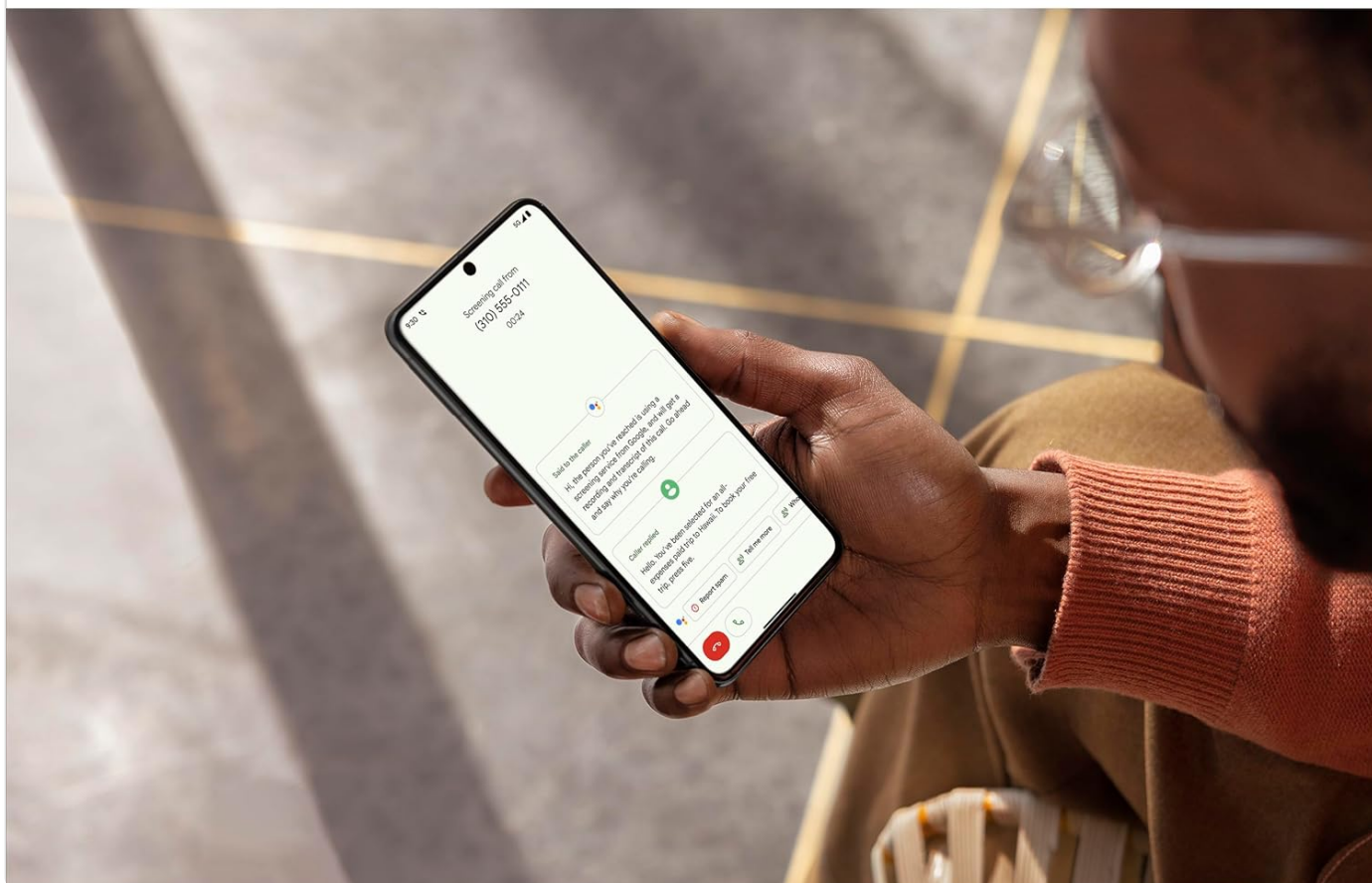


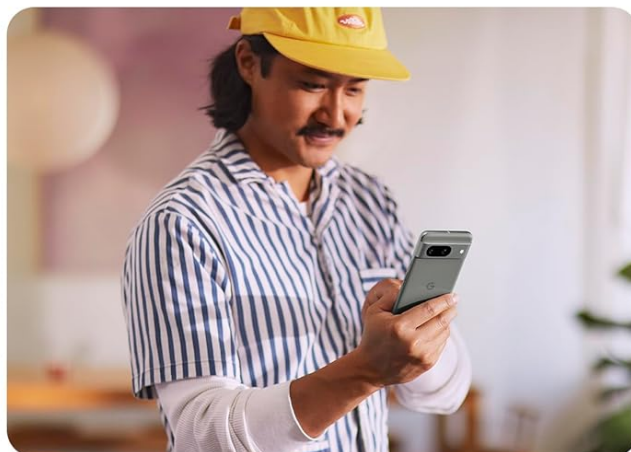
Image: Illustrates how the Pixel 8 assists with call management, showing features like Call Screen, Direct My Call, and Google Assistant holding calls.

Do more, even faster.¹

Hear callers clearly
when they're in
a noisy place.¹⁴



Save time and get
more done with
Google Assistant.



Translate languages
on the spot with
Live Translate.¹⁵

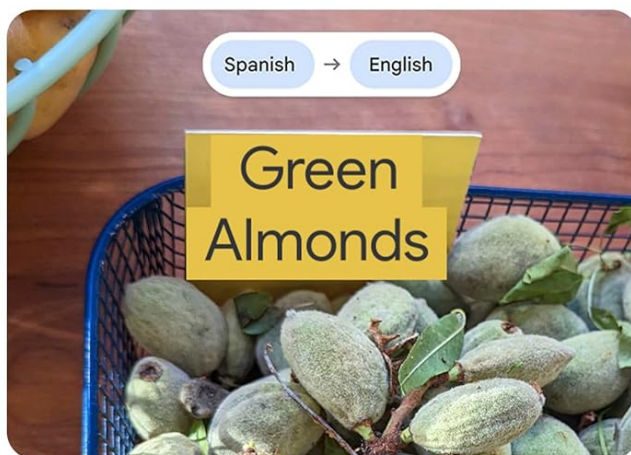
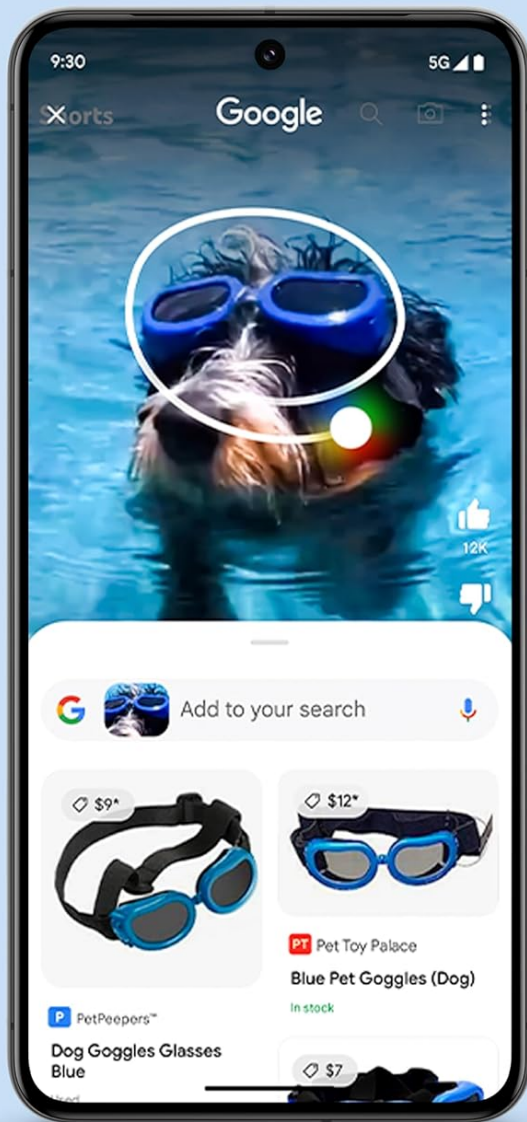


Image: Depicts the Pixel 8's ability to enhance communication, showing clear call audio in noisy environments, efficient Google Assistant use, and on-the-spot language translation with Live Translate.



Circle to Search with Google

A super easy way to search.

Instantly search what you see on your phone with Google, without switching apps. Just circle, highlight, or scribble any image, text, or video.¹

¹ Requires internet connection and compatible apps and surfaces. Results may vary depending on visual matches.

Image: Shows the "Circle to Search" feature in action, demonstrating how users can easily search for on-screen content by circling an object in an image or video.

4. Connectivity

The Pixel 8 supports various connectivity options:

- **Cellular:** Unlocked 5G phone compatible with major carriers (Google Fi, Verizon, T-Mobile, AT&T).
- **Wi-Fi:** Connect to wireless networks for internet access.
- **Bluetooth:** Pair with wireless accessories like headphones and smartwatches.
- **NFC:** For contactless payments and quick pairing with compatible devices.

5. Battery Management

The Pixel 8 is equipped with a 4575 mAh Adaptive Battery designed to last over 24 hours. For extended use, enable Extreme Battery Saver, which can prolong battery life up to 72 hours. The device supports fast charging and Qi-Certified wireless charging.

1. Software Updates

Google provides 7 years of security updates and regular "Feature Drops" to enhance your Pixel's functionality and security over time. Ensure your device is connected to Wi-Fi to download and install these updates automatically or manually check for them in your phone's settings.

2. Cleaning Your Device

To clean your Pixel 8, gently wipe the screen and body with a soft, lint-free cloth. For stubborn smudges, slightly dampen the cloth with water. Avoid using harsh chemicals or abrasive materials, as they can damage the screen and finish.

3. Care and Durability

The Pixel 8 is designed to handle slips, spills, and dust, offering enhanced durability. While robust, it is recommended to use a protective case and screen protector to safeguard your device against accidental damage and prolong its lifespan.

Built to last.

Fast-charging,
24-hour battery
you can count on^{5,6}

With automatic Feature
Drops, your Pixel keeps
getting better over time

Design can
handle slips,
spills, and dust¹⁰



Image: Highlights the Pixel 8's robust construction and long-lasting battery, showing a user with the phone in an outdoor setting, emphasizing its resilience and 24-hour battery life.

TROUBLESHOOTING

1. Common Issues

- **Battery Draining Quickly:** Check background app usage, reduce screen brightness, or enable Extreme Battery Saver.
- **Connectivity Problems:** Toggle Wi-Fi/Bluetooth/Cellular off and on, restart the device, or reset network settings.
- **App Crashes:** Clear app cache, update the app, or reinstall it.
- **Device Unresponsive:** Press and hold the power button for about 30 seconds to force a restart.

2. Personal Safety Features

The Pixel 8 includes features designed for your safety:

- **Car Crash Detection:** Automatically calls 911 and shares your location with emergency contacts in the event of a severe car crash.
- **Emergency Location Service (ELS):** Provides your location to emergency responders when you call or text an emergency number.

Personal safety features for added peace of mind.

Feel extra protected with car crash detection.⁸

Get crisis alerts about nearby hazards, like flooding, fire, or a tornado.¹⁸

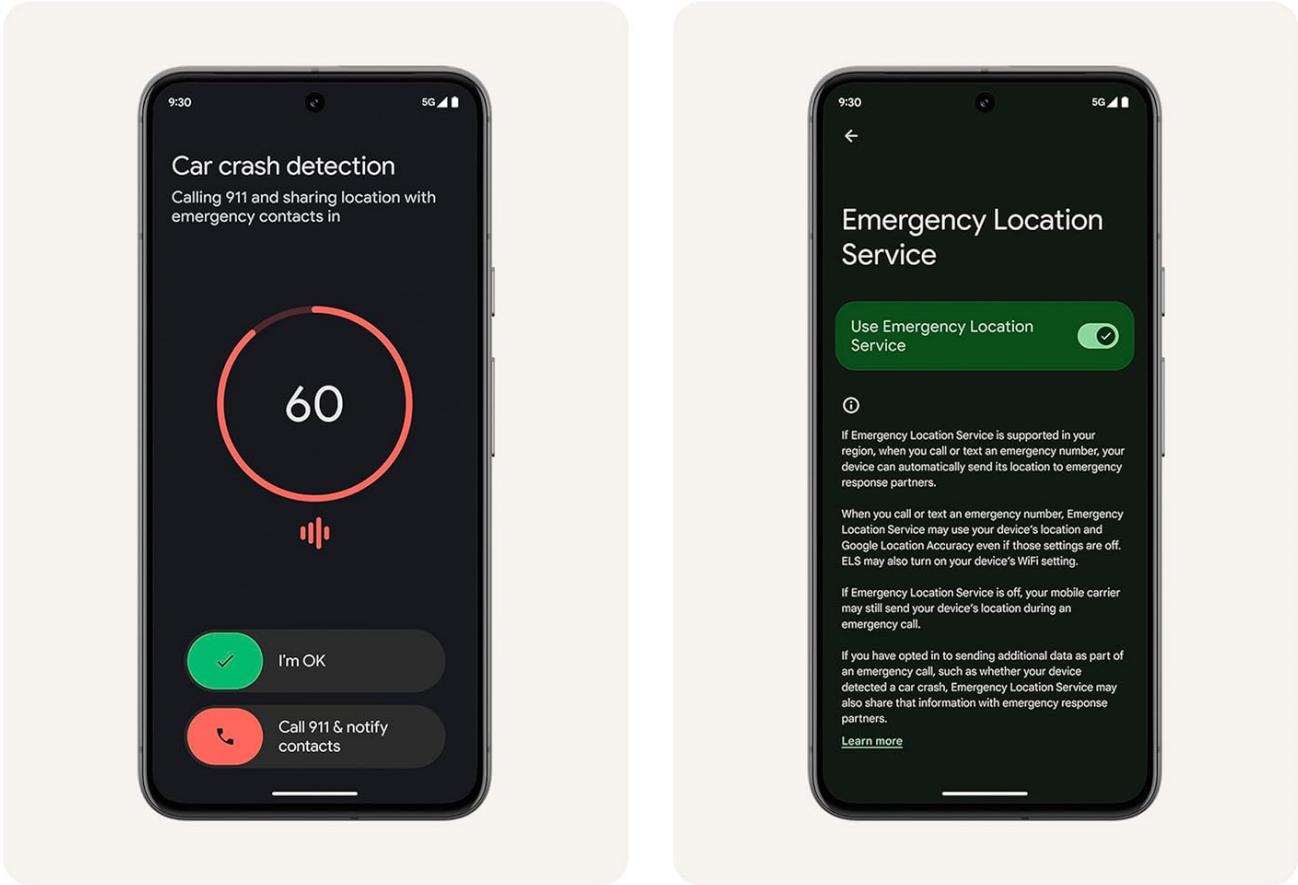


Image: Displays the Pixel 8's personal safety features, including the Car Crash Detection interface and information about the Emergency Location Service, emphasizing peace of mind.

SPECIFICATIONS

Feature	Detail
Model Name	Pixel 8 (G9BQD)
Dimensions	5.92 x 2.79 x 0.35 inches
Weight	6.6 ounces (0.41 Pounds)
Display Size	6.2 Inches Actua Display
Resolution	1080 x 2400 pixels
Refresh Rate	Up to 120 Hz

Operating System	Android 13.0 (upgradable)
Processor	Google Tensor G3 (1.2GHz Cortex A13 Processor, 4 GHz CPU Speed)
RAM	8 GB
Storage Capacity	128 GB (as per current model)
Rear Camera	50 MP Wide, 12 MP Ultrawide
Front Camera	10.5 MP
Battery Capacity	4575 mAh
Talk Time	Up to 24 Hours
Charging	Fast Charging, Qi-Certified Wireless Charging
Connectivity	5G Cellular, Wi-Fi, Bluetooth, NFC, GPS
Special Features	Google AI, Titan M2 Security Chip, VPN by Google One, Car Crash Detection, Emergency Location Service

Pick your Pixel.



Pixel 8 Pro



Pixel 8



Display

6.7" Super Actua display,³
1 to 120Hz⁴

6.2" Actua display,³
60 to 120Hz⁴



Camera
hardware

10.5 MP front camera²¹
50 MP rear wide lens
48 MP rear ultrawide lens²¹
48 MP rear telephoto lens
with 5x optical zoom

10.5 MP front camera²¹
50 MP rear wide lens
12 MP rear ultrawide lens²¹



Camera
software

Super Res Zoom⁴
up to 30x
Pro controls²²

Super Res Zoom⁴
up to 8x



Memory
and storage

12 GB RAM
512 / 256 / 128 GB storage²³

8 GB RAM
256 / 128 GB storage²³



Fast charging,
24-hour battery^{5,6}

Wireless charging

Wireless charging

Image: A comparison table detailing the specifications of the Pixel 8 and Pixel 8 Pro, including display, camera hardware, camera software, memory, storage, and battery features.

Next-level performance from Google Tensor G3.

The new Google Tensor G3 chip is built with Google AI for cutting-edge photo and video features and smarter ways to help.¹



Image: A visual representation of the Google Tensor G3 chip, highlighting its role in powering the Pixel 8's advanced features and Google AI capabilities.

WARRANTY AND SUPPORT

Your Google Pixel 8 comes with a standard manufacturer's warranty. For detailed warranty information, including coverage and duration, please refer to the warranty card included in your product packaging or visit the official Google support website.

For technical assistance, troubleshooting, or to access additional resources, please visit the [Google Pixel Phone Help Center](#). You can also find community forums and contact support directly through the website.

Google is committed to providing 7 years of security updates for your Pixel 8, ensuring your device remains secure and up-to-date with the latest features.

Security you can depend on.



VPN by Google One
helps protect your
online activity⁹



With 7 years of security
updates, your Pixel gets
even more secure over time¹⁷



Titan M2 security
chip keeps your
personal info safe

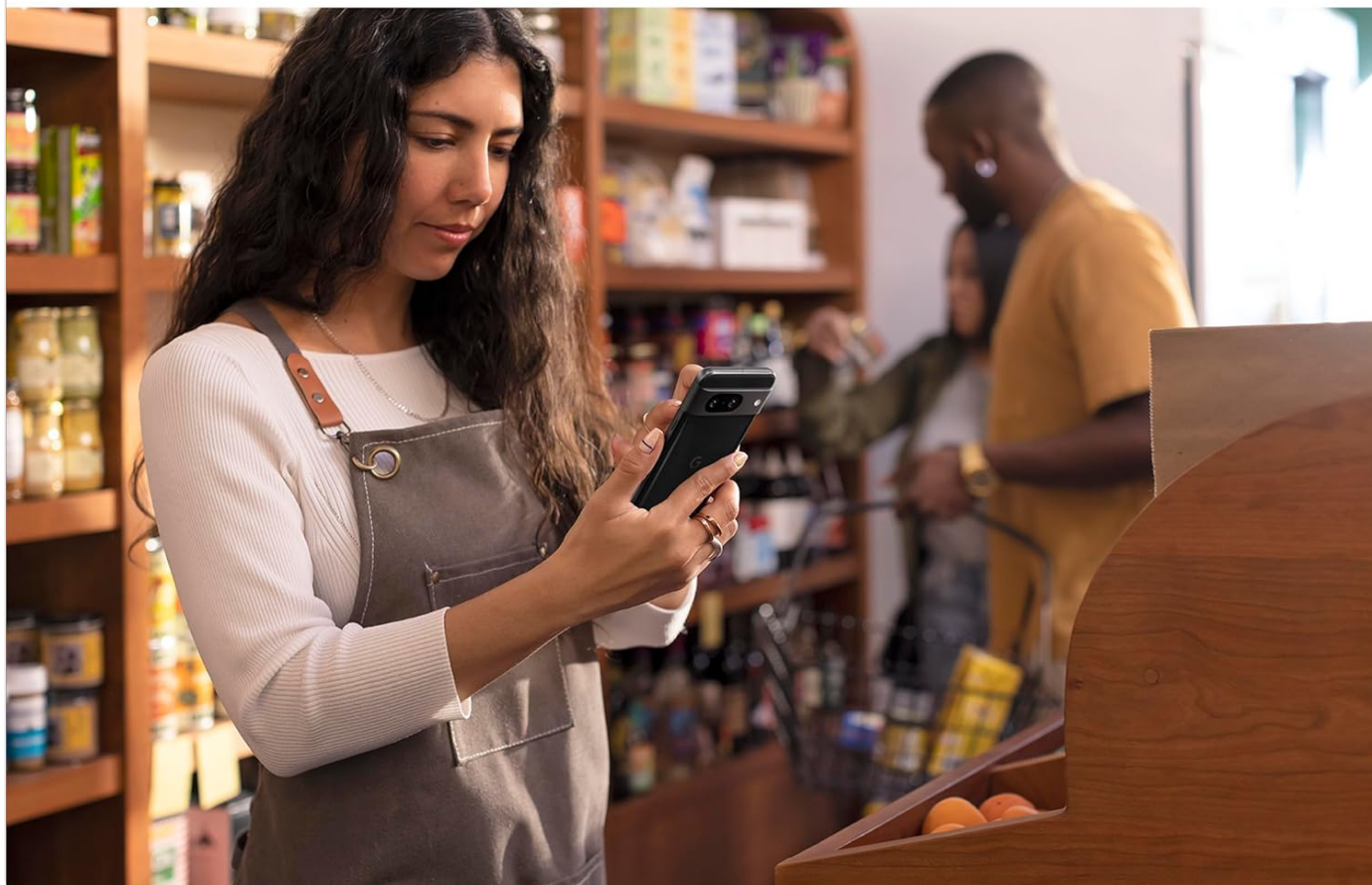


Image: Illustrates the security measures of the Pixel 8, including VPN by Google One, 7 years of security updates, and the Titan M2 security chip, ensuring user data protection.

© 2023 Google LLC. All rights reserved. Google, Pixel, and other related marks are trademarks of Google LLC.

Related Documents - Pixel 8 (G9BQD)

