

Hikity H-C79DEA3417A3

Hikity H-C79DEA3417A3 1 Din Car Stereo User Manual

7-Inch Retractable Touchscreen with CarPlay, Android Auto, and Bluetooth

1. INTRODUCTION

Thank you for choosing the Hikity H-C79DEA3417A3 1 Din Car Stereo. This manual provides detailed instructions for the installation, operation, and maintenance of your new car stereo. Please read this manual thoroughly before use to ensure proper functionality and to maximize your user experience. Keep this manual for future reference.

2. PRODUCT OVERVIEW

The Hikity H-C79DEA3417A3 is a versatile 1 DIN car stereo featuring a 7-inch electric retractable touchscreen. It integrates advanced connectivity options and multimedia playback capabilities to enhance your driving experience.

Key Features:

- **7-Inch Electric Retractable Touchscreen:** Automatically extends and retracts with front panel buttons for control. Standard 1 DIN size (186 mm x 58 mm).
- **CarPlay & Android Auto:** Supports iOS CarPlay and Android Auto for seamless smartphone integration, enabling navigation, calls, messages, and music directly from the stereo.
- **Mirror Link:** Allows mirroring of your iOS or Android phone screen onto the car stereo display.
- **Bluetooth 5.1:** Built-in system for hands-free calling, Bluetooth music streaming, and phonebook download.
- **FM Radio:** Supports FM radio playback with 18 preset storage locations for your favorite stations.
- **USB & AUX Playback:** Features one AUX interface and two USB interfaces. One USB port is for charging, and the other supports U disk (USB drive) file recognition for audio and video playback.
- **EQ Adjustment:** Supports equalization settings with various sound modes including Classic, Pop, Rock,

and Jazz.

- **Customizable Button Colors:** Illuminated buttons with 7 selectable colors (blue, green, cyan, red, magenta, yellow, white).
- **Steering Wheel Control (SWC):** Compatible with existing steering wheel controls for convenient operation.
- **Rear View Camera Support:** Automatically displays the reverse interface when a rear camera is connected and engaged, aiding in safer parking.



Figure 2.1: Hikity 1 Din Car Stereo with retractable screen and smartphone integration features.



Figure 2.2: Bluetooth, FM Radio, and EQ Functionality.



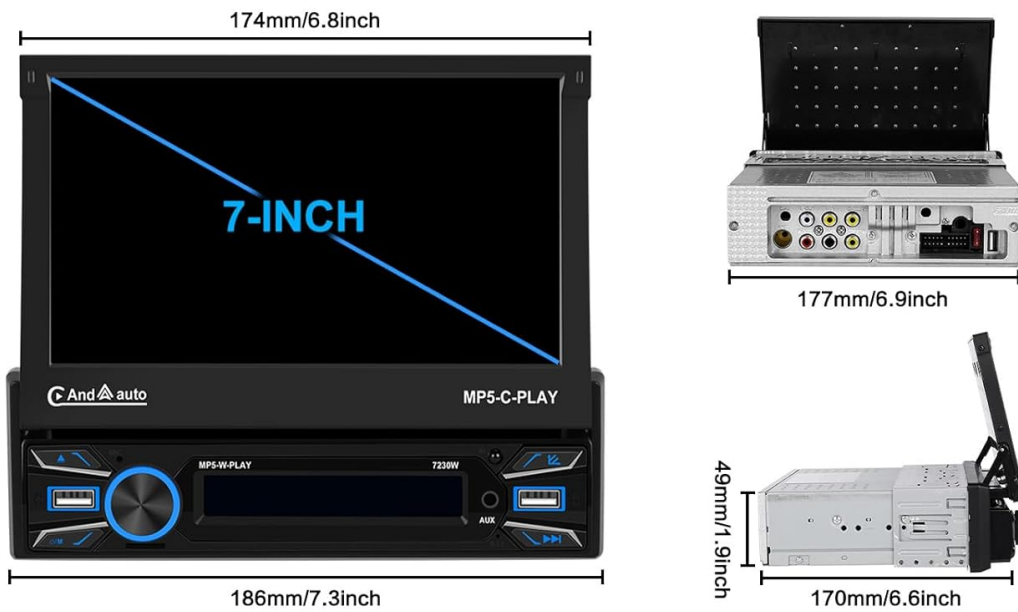
Figure 2.3: Steering Wheel Controls, Rear View Camera, Color Button Light, and USB/TF/AUX Player.

3. PACKAGE CONTENTS

Verify that all items are present in the package before proceeding with installation.

- Hikity H-C79DEA3417A3 Car Stereo Unit
- Power Cable
- Microphone
- Remote Control
- User Manual
- Disassembly Tools
- 12LED Rear Camera

Product Size & List



 Power Cable	 MIC	 Remote
 User Manual	 disassembly tools	 12LED Rear Camera

Figure 3.1: Product Dimensions and Included Accessories.

4. INSTALLATION

Professional installation is recommended. Ensure the vehicle's power is disconnected before starting installation.

4.1 Wiring Diagram

Refer to the wiring diagram for proper connections. Incorrect wiring can damage the unit or vehicle electrical system.

- **Power Cable:** Connect to the vehicle's power supply according to the diagram.
- **Rear View Camera:** Connect the camera's video output to the 'Reverse Video Input' on the stereo. Connect the camera's power to the reverse light circuit.
- **Steering Wheel Control (SWC):** Connect the SWC wires to your vehicle's steering wheel control interface, if applicable.
- **Antenna:** Connect the radio antenna.
- **GPS Antenna:** Connect the GPS antenna for navigation features (if applicable to your model).

Rear View Camera

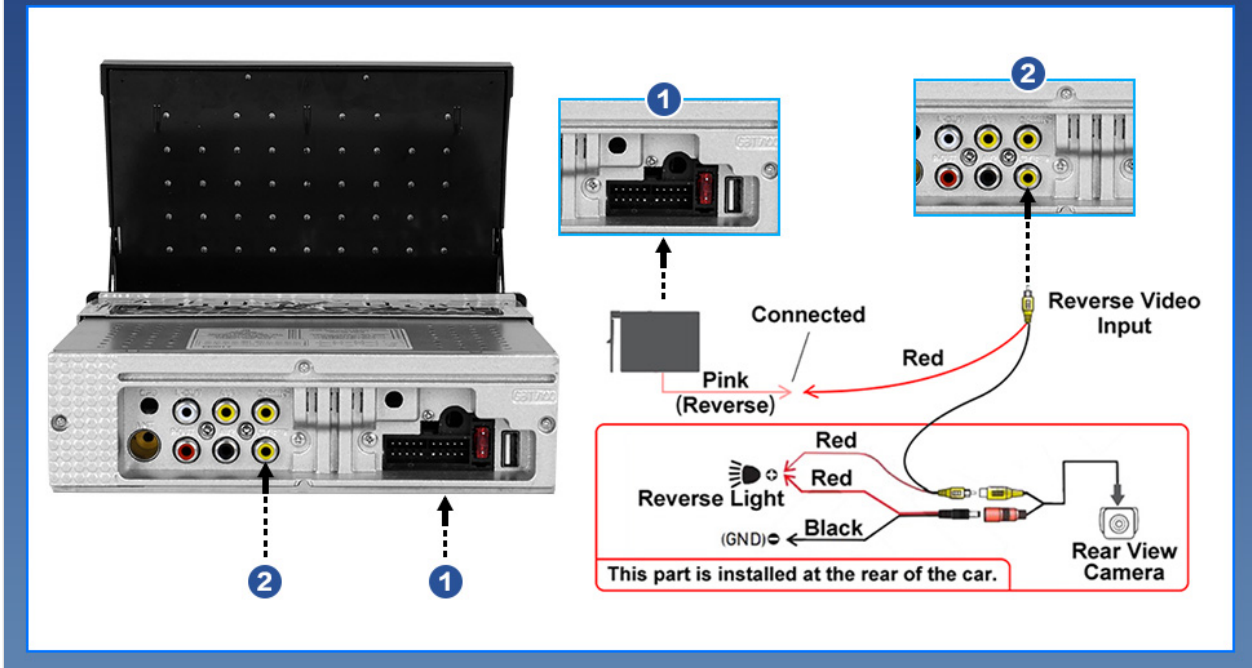


Figure 4.1: Rear View Camera Wiring Diagram.

4.2 Mounting the Unit

1. Insert the mounting sleeve into the dashboard opening.
2. Secure the sleeve using the provided tabs or screws.
3. Slide the car stereo unit into the mounting sleeve until it clicks into place.
4. Connect all necessary wiring harnesses.

5. SETUP

5.1 Initial Power On

After installation, reconnect the vehicle's power. The unit should power on automatically or by pressing the power button.

5.2 Screen Retraction/Extension

Use the dedicated buttons on the front panel to control the electric retractable screen. The screen can also rotate up to 95 degrees for optimal viewing angle.

Automatic Retractable Screen



Figure 5.1: Automatic Retractable Screen Operation.

5.3 Language and Time Settings

Navigate to the system settings menu to adjust the display language, time, and date according to your preferences.

6. OPERATING INSTRUCTIONS

6.1 CarPlay and Android Auto

Connect your iOS or Android smartphone via USB or wirelessly (if supported by your phone and the unit). The system will prompt you to activate CarPlay or Android Auto. Follow the on-screen instructions to grant necessary permissions.

- **Navigation:** Use your phone's navigation apps directly on the stereo screen.
- **Communication:** Make calls, send messages, and access your phonebook hands-free.
- **Media:** Play music and podcasts from your phone's apps.



Figure 6.1: Apple CarPlay Interface.



Figure 6.2: Android Auto Interface.

6.2 Mirror Link

To use Mirror Link, connect your smartphone via USB. Select the Mirror Link option on the stereo. Follow the prompts on your phone to allow screen mirroring. This feature displays your phone's screen directly on the car stereo.

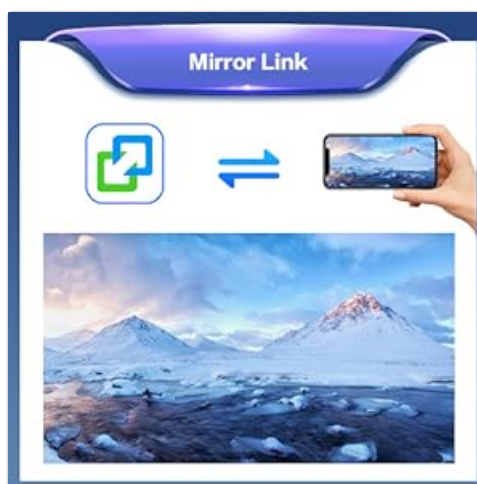


Figure 6.3: Mirror Link Functionality.

6.3 Bluetooth Operation

1. Enable Bluetooth on your smartphone.

2. On the car stereo, navigate to the Bluetooth menu.
3. Search for available devices and select "Hikity" or the device name displayed on the stereo.
4. Confirm the pairing code on both devices.
5. Once paired, you can make hands-free calls, stream audio, and sync your phonebook.

6.4 FM Radio

Select the FM radio mode. Use the touch controls to scan for stations, manually tune, or select from your 18 preset stations. Long-press a preset button to save the current station.

6.5 USB / AUX Playback

Insert a USB drive into the designated USB port or connect an audio device to the AUX input. The stereo will automatically detect the input and allow you to browse and play media files.

6.6 EQ Settings

Access the EQ settings menu to adjust audio equalization. Choose from predefined modes (Classic, Pop, Rock, Jazz) or customize your own sound profile.



Figure 6.4: EQ Adjustment Interface.

6.7 Steering Wheel Control (SWC)

If your vehicle supports SWC, navigate to the SWC settings menu. Follow the on-screen instructions to map your steering wheel buttons to the stereo's functions (e.g., volume up/down, track skip, mode).



Figure 6.5: Steering Wheel Control Setup.

6.8 Rear View Camera

When the vehicle is shifted into reverse gear, the stereo will automatically switch to the rear view camera display, providing a clear view of the area behind your vehicle.

6.9 Button Color Customization

Access the display settings to change the color of the illuminated buttons. Choose from the 7 available colors to match your vehicle's interior or personal preference.



Figure 6.6: Customizable Button Colors.

7. MAINTENANCE

- **Cleaning:** Use a soft, dry cloth to clean the screen and unit. Avoid abrasive cleaners or solvents.
- **Screen Care:** Do not press hard on the touchscreen. Avoid sharp objects that could scratch the display.
- **Temperature:** Operate the unit within recommended temperature ranges to prevent damage.

8. TROUBLESHOOTING

Problem	Possible Cause	Solution
Unit does not power on	Incorrect wiring; Blown fuse; No power supply	Check power connections; Replace fuse; Verify vehicle's power supply.
No sound	Speaker wires disconnected; Volume too low; Mute activated	Check speaker connections; Increase volume; Deactivate mute function.
Bluetooth connection issues	Device not paired; Bluetooth off on phone/stereo	Ensure Bluetooth is enabled on both devices; Re-pair the devices.
CarPlay/Android Auto not working	Incorrect USB cable; Phone not compatible; Permissions not granted	Use a high-quality USB cable; Check phone compatibility; Grant all necessary permissions.

Problem	Possible Cause	Solution
Rear camera not displaying	Camera not connected; Reverse trigger wire not connected	Verify camera wiring and connections; Ensure reverse trigger wire is correctly connected to the reverse light.

9. SPECIFICATIONS

Feature	Specification
Brand	Hikity
Model Number	H-C79DEA3417A3
Connectivity Technology	Bluetooth
Controller Type	Android
Special Feature	Photographic Sensor (likely refers to camera input)
Compatible Devices	Smartphone
Connector Type	AUX, USB
Audio Output Mode	Stereo
Surround Sound Channel Configuration	4.0
Video Encoding	AVI
Color	Blue/Green/Cyan/Red/Magenta/Yellow/White (customizable)
Output Power	180 Watts
Wattage	45 Watts
Number of Channels	2
Internet Application	CarPlay, Android Auto, Mirror Link
Control Method	Remote Control
Audio Output Type	Internal
Wireless Technology	Bluetooth
Digital Media Format	AVI
Manufacturer	Hikity
Part Number	H-C79DEA3417A3
Country of Origin	China

Feature	Specification
Item Dimensions (D x W x H)	17.8D x 18.6W x 18.6H centimeters
Item Weight	1550 Grams

10. WARRANTY AND SUPPORT

This product comes with a 1-year warranty. For warranty claims or technical support, please contact Hikity customer service.

Customer Support Email: roinvouservices@163.com



Figure 10.1: Customer Support Information.