

SPYPOINT B0CGRWB5RC

SPYPOINT Flex-S + LIT-22 Solar Cellular Trail Camera User Manual

Comprehensive guide for setup, operation, and maintenance of your SPYPOINT Flex-S trail camera.

1. PRODUCT OVERVIEW

The SPYPOINT Flex-S is an advanced cellular trail camera featuring an integrated solar panel and a removable LIT-22 lithium battery. It is designed for extended outdoor use, capturing high-resolution photos and videos, and transmitting them via LTE connectivity.

Key Features

- **Integrated Solar Panel:** Provides continuous charging to the internal lithium battery, extending operational life significantly.
- **LTE Connectivity:** Enables seamless transmission of photos and video previews to your mobile device via the SPYPOINT app, utilizing available cellular networks.
- **Instant Mode for On-Demand Requests:** Allows users to request real-time photos or video previews, and update camera GPS and status.
- **High-Resolution Photo & Video Transmission:** Captures stunning 36MP photos and 1080p videos with sound. Full HD video clips (15 seconds) can be requested.
- **Easy Setup and Maintenance:** Features a simplified activation process, in-camera microSD card formatting, and over-the-air (OTA) firmware updates via the SPYPOINT app.

INTRODUCING THE **FLEX-S**

**PHOTO & VIDEO
TRANSMISSION**

**EXTENDED
BATTERY LIFE**

**0.3 TRIGGER
SPEED**

**100' DETECTION
& FLASH RANGE**

GPS ENABLED

Figure 1: Overview of the SPYPOINT Flex-S camera and its primary features.

2. SETUP GUIDE

Follow these steps to prepare your SPYPOINT Flex-S camera for operation.

2.1 Initial Activation

1. Download the SPYPOINT app from your device's app store.
2. Create a new account or log in to your existing account.
3. Follow the in-app instructions to activate your Flex-S camera. This typically involves scanning a QR code on the camera.

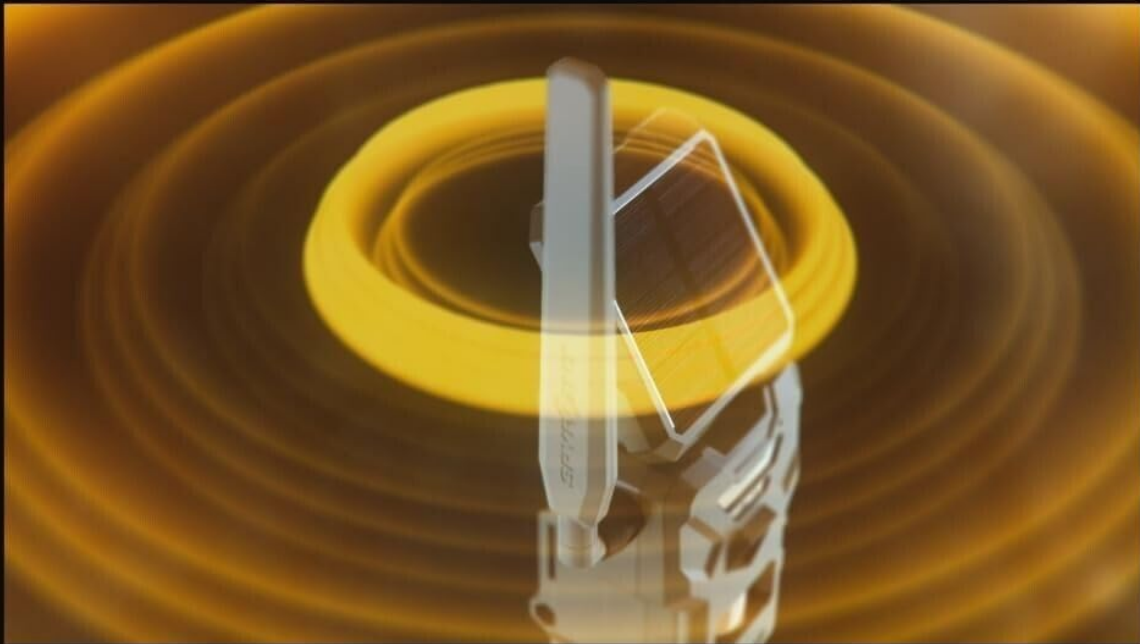
2.2 microSD Card Preparation

A microSD card (not included) is required to store photos and videos. Ensure it is formatted correctly.

- Insert a compatible microSD card into the camera's slot.

- Press the **FORMAT** button on the camera to format the microSD card directly. This ensures optimal performance.

THE TRUE **DUAL-SIM** CELLULAR TRAIL CAMERA!



**2 SIM
CARDS**

**AUTOMATICALLY
CONNECTS**

**RELIABLE
TRANSMISSION**

**ALL
CARRIERS**

Figure 2: Location of the Format and Test buttons on the Flex-S camera.

2.3 Battery Installation and Charging

The Flex-S comes with an integrated solar panel and a removable LIT-22 lithium battery.

- Ensure the LIT-22 battery is properly inserted into its compartment.
- The integrated solar panel will charge the LIT-22 battery when exposed to sunlight. For initial use or prolonged storage, it is recommended to fully charge the LIT-22 battery using a compatible USB charger (not included) before deployment.



Figure 3: SPYPOINT Flex-S camera and the LIT-22 battery.



Figure 4: The LIT-22 rechargeable lithium battery.

2.4 Camera Placement

Proper placement is crucial for optimal performance and solar charging.

- Mount the camera securely to a tree or post using the provided strap.
- Ensure the solar panel is oriented to receive maximum direct sunlight throughout the day.
- Use the **TEST** button to verify the camera's framing and detection area before leaving the site.

EASY TO SET-UP & USE

**microSD Card
Format Button**

Test Button



Figure 5: Example of camera placement on a tree.

3. OPERATING YOUR SPYPOINT FLEX-S

Understand how to utilize the advanced features of your trail camera.

3.1 LTE Connectivity and Data Transmission

The Flex-S automatically connects to the strongest available cellular network thanks to its true dual-SIM configuration.

- Photos and video previews are sent to your SPYPOINT app at scheduled sync times.
- Monitor camera status, battery level, and signal strength directly from the app.

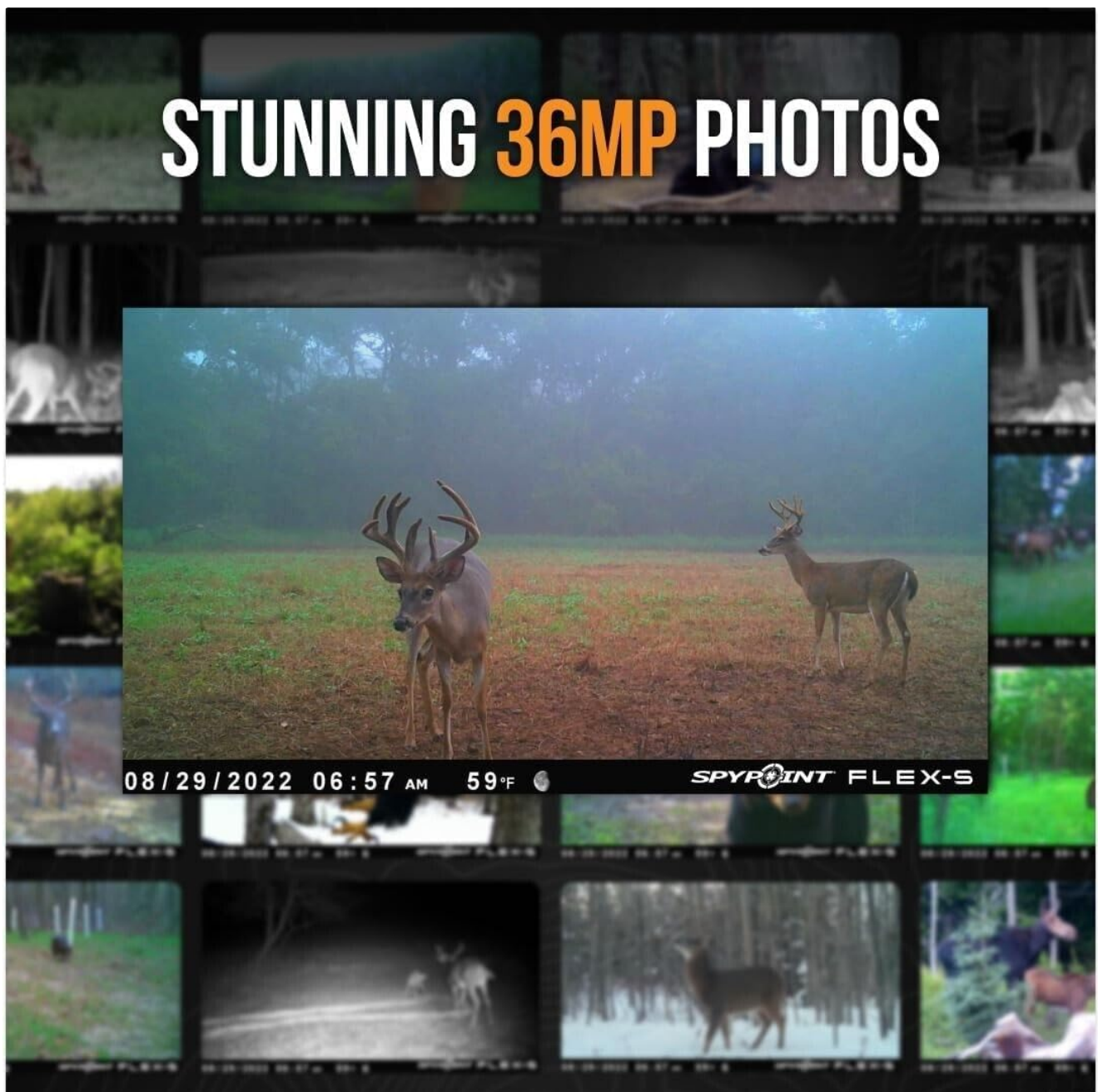


Figure 6: The Flex-S utilizes dual-SIM technology for reliable cellular connectivity.

3.2 Instant Mode and On-Demand Requests

When the camera is in Instant Mode, you can make real-time requests.

- **Request Photo/Video Preview:** Get an immediate snapshot or short video preview of what's in front of the camera.
- **Update GPS/Status:** Remotely refresh the camera's GPS location and operational status.

3.3 Photo and Video Capture

The Flex-S captures high-quality media for detailed scouting.

- **Photos:** Captured at 36MP resolution. Viewable directly in the SPYPOINT app.
- **Videos:** Recorded in 1080p with sound. Three-frame animated previews are sent to the app. You can request the full 15-second HD video clip if desired.

INCREDIBLE 1080P VIDEOS WITH SOUND

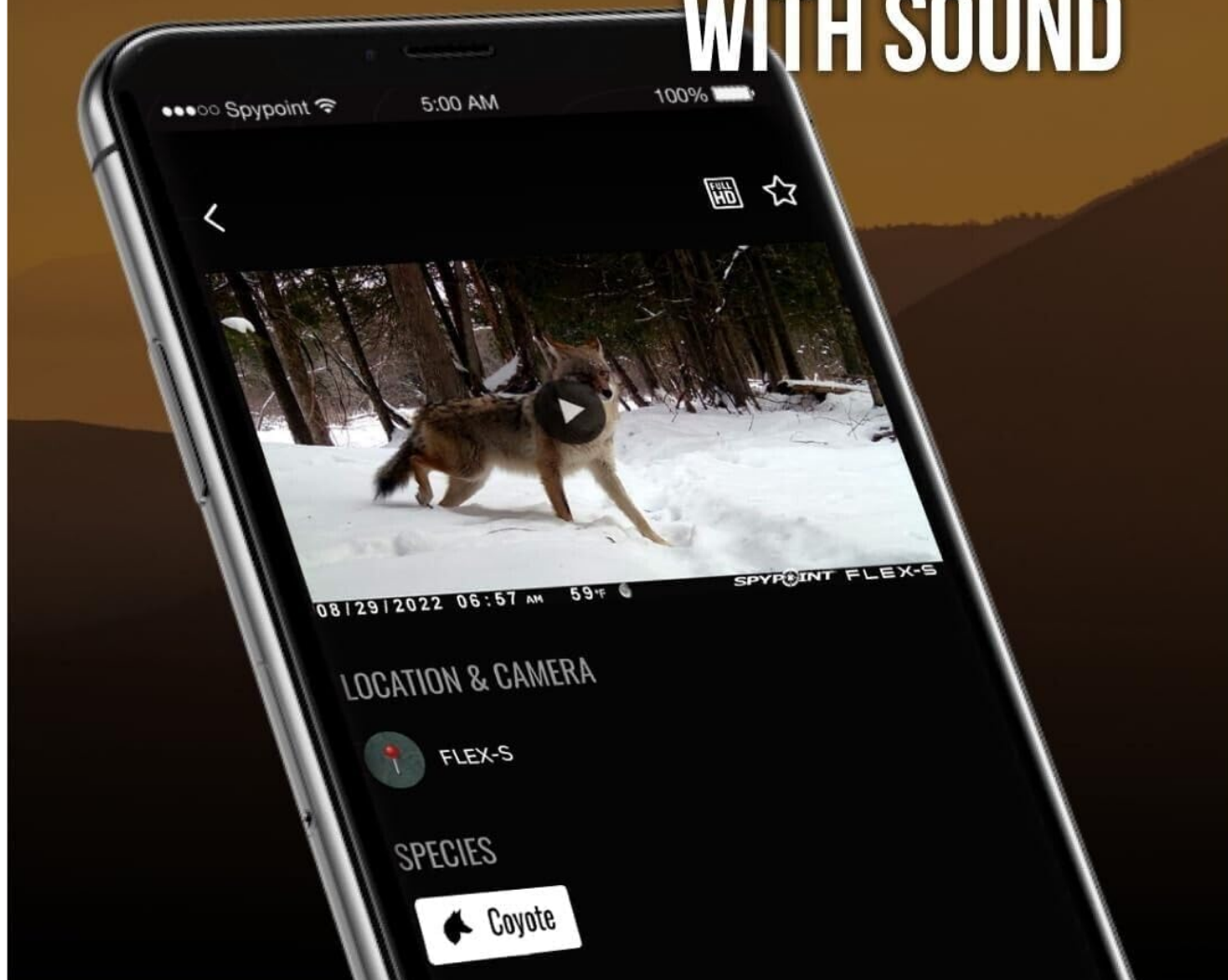


Figure 7: Examples of 36MP photos captured by the Flex-S.

4. MAINTENANCE

Regular maintenance ensures the longevity and optimal performance of your camera.

4.1 Battery Management

- The integrated solar panel significantly reduces the need for manual battery changes. Ensure the panel is clean and unobstructed for efficient charging.
- Monitor the LIT-22 battery level via the SPYPOINT app. If the camera is in a low-light environment for extended periods, consider bringing the battery indoors for a full charge.

4.2 Firmware Updates

Keep your camera's firmware up-to-date for the latest features and bug fixes.

- Firmware updates can be requested and managed directly within the SPYPOINT app (Over-The-Air updates).
- Ensure the camera has sufficient battery charge and good cellular signal before initiating an update.

4.3 Cleaning and Care

- Periodically clean the camera lens, solar panel, and housing with a soft, damp cloth. Avoid abrasive materials or harsh chemicals.
- Ensure all latches and seals are properly closed to maintain water resistance.

5. TROUBLESHOOTING

Common issues and their potential solutions.

Problem	Possible Cause	Solution
Camera not sending photos/videos.	No cellular signal, low battery, full microSD card, incorrect settings.	Check signal strength in app, ensure battery is charged, format/replace microSD card, verify settings in app.
Poor image/video quality.	Dirty lens, low light conditions, camera movement.	Clean the lens, ensure adequate lighting, secure camera mounting.
Battery not charging via solar panel.	Solar panel obstructed/dirty, insufficient sunlight.	Clean solar panel, reposition camera for maximum sun exposure.
Camera not detecting motion.	Incorrect sensitivity settings, obstruction in detection zone.	Adjust detection sensitivity in app, clear obstructions from detection path.

6. TECHNICAL SPECIFICATIONS

Feature	Detail
Effective Still Resolution	36 MP
Video Capture Resolution	1080p
Connectivity Technology	Wireless (LTE, Wi-Fi)
Power Source	Integrated Solar Panel, LIT-22 Rechargeable Lithium Battery
Indoor/Outdoor Usage	Outdoor
Alert Type	Motion Only
Low Light Technology	Yes
Compatible Devices	Smartphone
Form Factor	Box
Recommended Uses	Game & Trail
Model Number (ASIN)	B0CGRWB5RC

Feature	Detail
Manufacturer	SpyPoint
Date First Available	July 7, 2023






7. WARRANTY AND SUPPORT

For warranty information, technical support, or further assistance, please contact SPYPOINT customer service.

- Visit the official SPYPOINT website for support resources and contact details.
- You can also find more information and products at the [SPYPOINT Store on Amazon](#).

© 2023 SPYPOINT. All rights reserved.

Related Documents - B0CGRWB5RC

	SPYPOINT FLEX Trail Camera User Manual Comprehensive user manual for the SPYPOINT FLEX cellular trail camera, covering setup, features, power options, memory card usage, activation, installation, configuration, verification, troubleshooting, accessories, warranty, and regulatory information.
	SPYPOINT LINK-MICRO-S-LTE Quick Start Guide A comprehensive quick start guide for the SPYPOINT LINK-MICRO-S-LTE trail camera, covering setup, activation, power management, configuration, and disposal.
	SPYPOINT FLEX Series Trail Camera User Manual: Setup, Features, and Troubleshooting Comprehensive user manual for the SPYPOINT FLEX Series cellular trail cameras. Learn about setup, installation, features, power options, activation, configuration, status indicators, troubleshooting, and warranty.
	SPYPOINT FLEX Series User Manual User manual for the SPYPOINT FLEX Series cellular trail cameras, covering setup, activation, features, power supply, memory card usage, installation, configuration, status, troubleshooting, warranty, and disposal.
	SPYPOINT FLEX-S Quick Start Guide Concise guide to setting up and installing the SPYPOINT FLEX-S trail camera, covering unboxing, initial charging, app setup, and field installation.



[SPYPOINT FLEX Series Trail Camera User Manual](#)

This user manual provides comprehensive instructions for the SPYPOINT FLEX Series trail cameras, including setup, features, power supply, memory card management, activation, installation, configuration, verification, troubleshooting, and warranty information. Learn how to optimize your camera for hunting and wildlife monitoring.