



Manuals.plus /

› KOORUI /

› KOORUI 27" 200Hz Gaming Monitor User Manual

KOORUI GN07

KOORUI 27" 200Hz Gaming Monitor User Manual

MODEL: GN07

Brand: KOORUI

PRODUCT OVERVIEW

The KOORUI 27-inch gaming monitor (Model GN07) delivers an exceptional visual experience with its WQHD (2560 x 1440p) resolution and DCI-P3 95% wide color gamut, bringing content to life with over 16.7 million colors. Its high color accuracy ensures realistic, detailed, and consistent images from any viewing angle.

Designed for the smoothest gaming experience, this monitor boasts a 200Hz refresh rate and FreeSync Premium technology, eliminating screen tearing and stuttering. Game mode enhances visibility in dark areas, allowing players to precisely target enemies and improve hit rates.

The monitor features a modern and minimalistic design with an ultra-thin body. Its quick-assembly stand allows for tilt adjustments from -5° to 20°, and VESA Wall-Mountable compatibility provides flexible mounting options for any environment.

Connectivity is versatile with multiple ports, including two HDMI and one DisplayPort, enabling seamless connection to various devices such as Xbox, PCs, and laptops for high-quality image transmission, suitable for both office work and entertainment.

KOORUI stands behind its product with a 3-year warranty, a 12-month replacement service, and technical support, ensuring reliability and customer satisfaction.

SETUP AND ASSEMBLY

This section guides you through the initial setup of your KOORUI GN07 monitor, including stand assembly and connection to your devices.

Unboxing and Initial Inspection

Carefully remove all components from the packaging. Verify that all items listed in the "What's in the Box" section are

present and undamaged. The package should include the 27-inch gaming monitor, a DP Cable, a Power Cord, and this User Manual.

Stand Assembly

The monitor stand is designed for quick assembly. Attach the stand base to the stand neck, then secure the assembled stand to the back of the monitor. Ensure all screws are tightened securely. The stand allows for tilt adjustment from -5° to 20° for optimal viewing comfort.



Figure 1: Ultra-Thin Bezels and VESA Compatibility. The monitor supports VESA 75x75mm mounting for alternative setups.

Connecting Your Devices

The KOORUI GN07 monitor provides multiple video input options. Connect your PC, gaming console (Xbox, PlayStation), or laptop using the appropriate cables.

- **HDMI Ports:** Use one of the two HDMI 2.0 ports for high-definition video and audio transmission.
- **DisplayPort:** Use the DisplayPort 1.4 for optimal performance, especially for high refresh rates and resolutions.
- **Audio Out:** Connect external speakers or headphones to the 3.5mm audio jack.

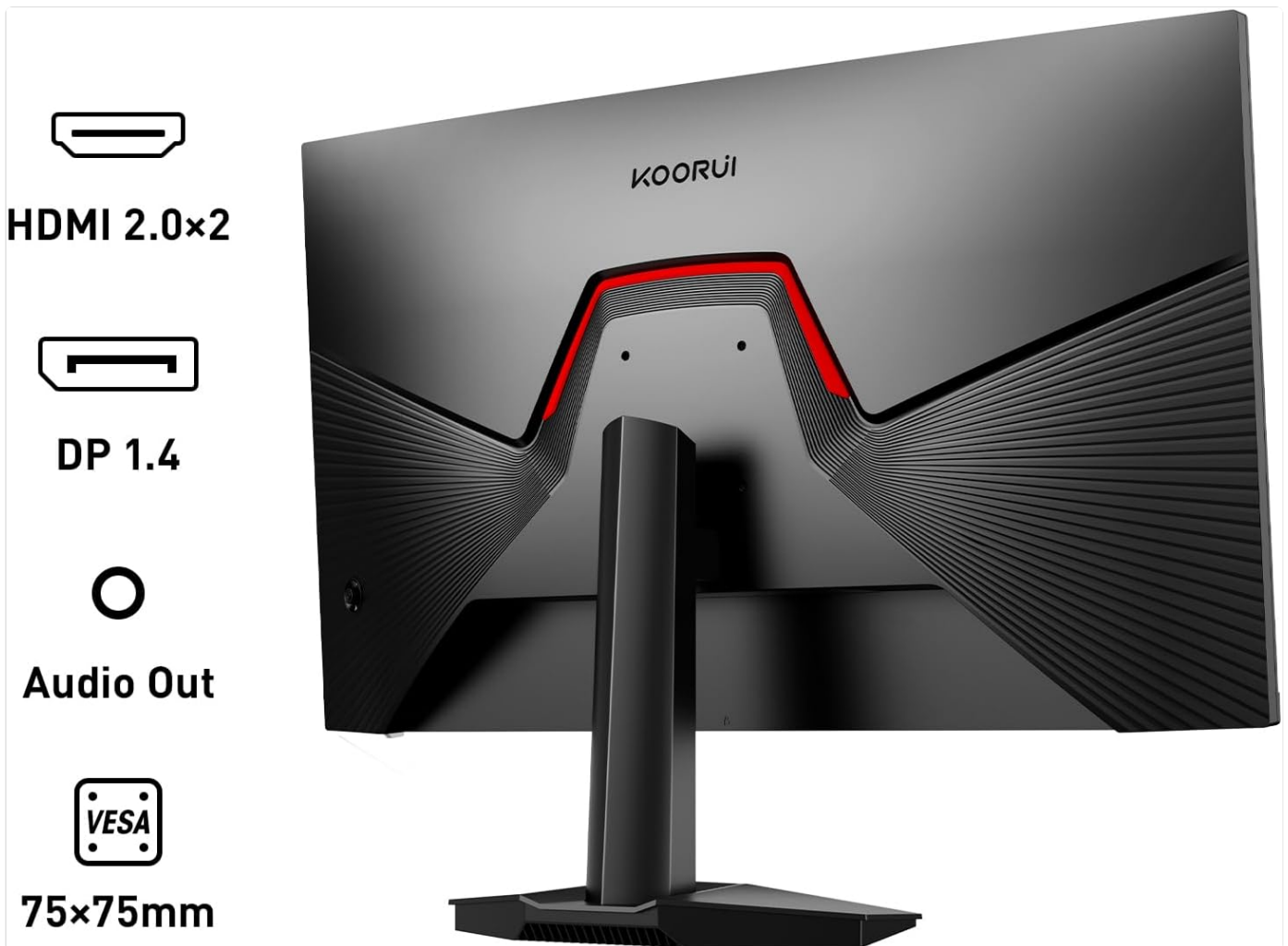


Figure 2: Available Ports on the KOORUI GN07 Monitor. Includes 2x HDMI 2.0, 1x DisplayPort 1.4, and Audio Out.

After connecting the video cable, connect the power cord to the monitor and then to a power outlet. Press the power button to turn on the monitor.

Visual Guide: Monitor Setup

Your browser does not support the video tag.

Video 1: Rapid Response Vivid Graphics (GN07). This video demonstrates the physical setup, VESA mount installation, and port connections of the KOORUI GN07 monitor.

OPERATING INSTRUCTIONS

Learn how to optimize your KOORUI GN07 monitor for the best visual and gaming performance.

On-Screen Display (OSD) Navigation

The monitor features a convenient joystick control located on the back for navigating the On-Screen Display (OSD) menu. This allows for easy adjustment of various settings without fumbling with multiple buttons.

- Push the joystick in to open the OSD menu.
- Move the joystick up, down, left, or right to navigate through menu options.
- Push the joystick in again to select an option or confirm a setting.

Display Settings and Optimization

Adjust the following settings via the OSD menu to enhance your viewing experience:

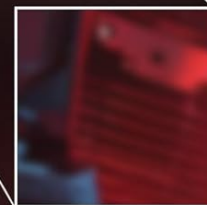
- **Brightness/Contrast:** Fine-tune the display's luminance and contrast levels.
- **Color Settings:** Adjust color temperature, gamma, and saturation to achieve desired color accuracy. The monitor supports DCI-P3 95% color gamut for vibrant and accurate colors.
- **Resolution:** The native resolution is WQHD (2560 x 1440p) for excellent detail. Ensure your connected device is outputting at this resolution for the best clarity.
- **Refresh Rate:** The monitor supports up to 200Hz refresh rate. Enable this setting in your device's display options for smoother motion, especially in gaming.
- **Response Time:** The 1ms fast response time minimizes motion blur and ghosting. This can often be adjusted in the OSD (e.g., Normal, Fast, Fastest).

WQHD Resolution

Excellent details



WQHD



Normal

Figure 3: WQHD Resolution provides excellent detail compared to standard resolution.

High Refresh Rate + Fast Response – Reduces Motion Blur, Smoother Visuals



Figure 4: High Refresh Rate and Fast Response reduce motion blur for smoother visuals.

Gaming Features

- **FreeSync Premium / Adaptive-Sync:** This technology synchronizes the monitor's refresh rate with your GPU's frame rate, eliminating screen tearing and stuttering for fluid gameplay. Ensure it's enabled in both the monitor OSD and your graphics card settings.
- **Game Mode:** Activate game mode to enhance visibility in dark scenes, allowing you to spot enemies more easily.
- **HDR 400:** Experience brighter whites and deeper blacks for a more immersive visual experience.

Adaptive Sync

Tear-Free, Stutter-Free – Dominate Your Game



Figure 5: Adaptive Sync provides tear-free and stutter-free gaming.

Eye Care Features

The KOORUI GN07 incorporates features to reduce eye strain during prolonged use:

- **Flicker-Free Technology:** Reduces screen flickering, which can cause eye fatigue.
- **Blue Light Filtering:** Minimizes harmful blue light emissions. Adjust the blue light filter level in the OSD menu to your preference.

Smart Eye Habits

20-20-20 Rule: Every 20min, look 20 feet away for 20s.
Avoid harsh/dim lighting to preserve eye comfort.

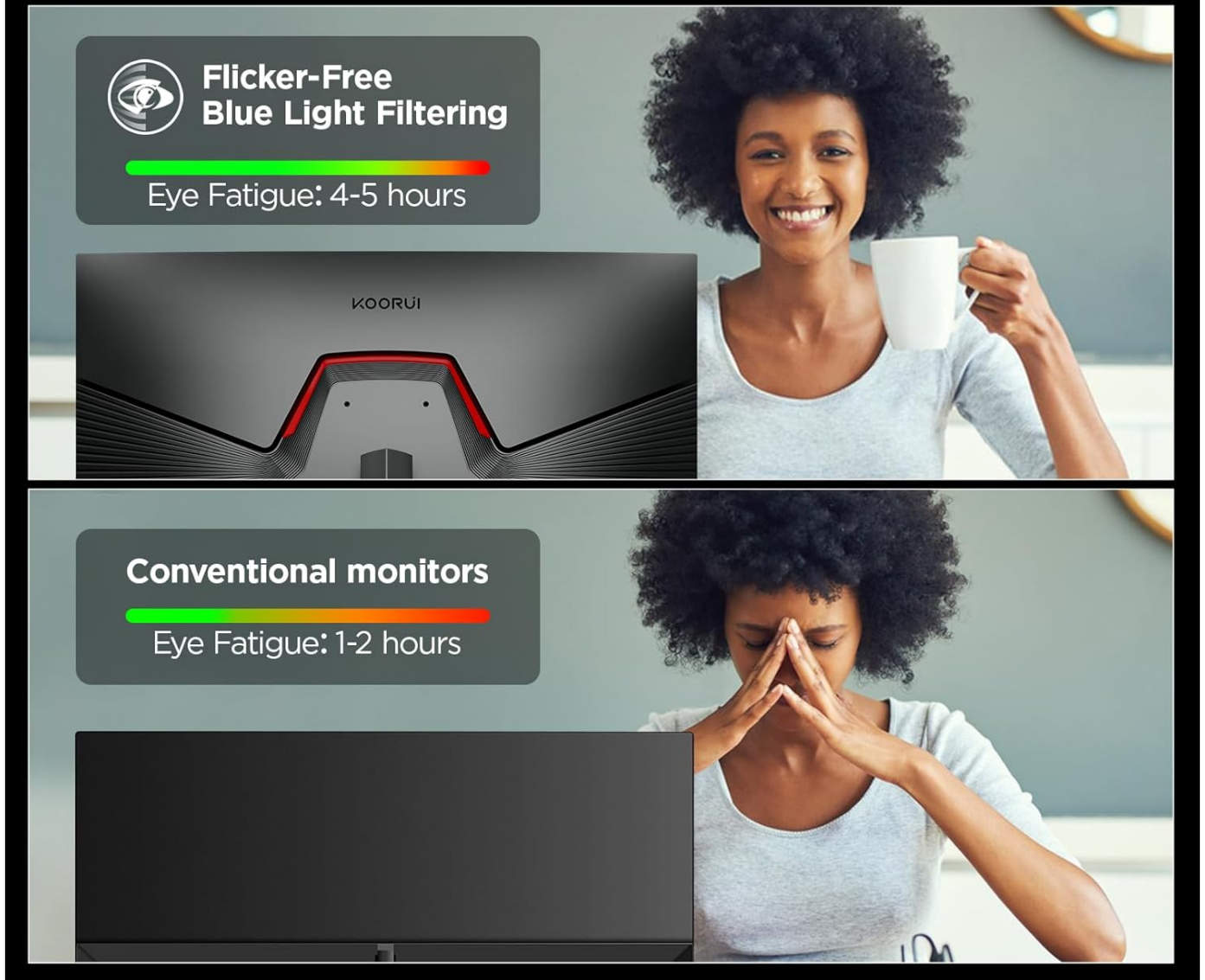


Figure 6: Smart Eye Habits promoted by Flicker-Free and Blue Light Filtering technologies.

MAINTENANCE

Proper maintenance ensures the longevity and optimal performance of your KOORUI GN07 monitor.

- **Cleaning the Screen:** Gently wipe the screen with a soft, lint-free cloth. For stubborn marks, lightly dampen the cloth with water or a screen-cleaning solution specifically designed for monitors. Avoid using harsh chemicals, abrasive cleaners, or direct spraying onto the screen.
- **Cleaning the Casing:** Use a soft, dry cloth to wipe the monitor's casing.
- **Ventilation:** Ensure the monitor's ventilation openings are not blocked. Adequate airflow prevents overheating.
- **Handling:** Avoid placing heavy objects on the monitor or applying excessive pressure to the screen. When moving the monitor, hold it by its base or stand, not by the screen.
- **Power Off:** Always turn off the monitor and unplug it from the power outlet before cleaning or if it will be unused for an extended period.

TROUBLESHOOTING

If you encounter issues with your KOORUI GN07 monitor, refer to the following common troubleshooting steps:

Problem	Possible Cause	Solution
No Power	Power cable not connected; Power outlet issue.	Ensure power cable is securely connected to monitor and outlet. Test outlet with another device.
No Signal	Video cable loose/disconnected; Incorrect input source selected.	Check video cable connections. Use OSD to select correct input (HDMI 1, HDMI 2, DP).
Flickering Screen	Refresh rate mismatch; Cable issue; Graphics driver issue.	Ensure refresh rate is set correctly in PC settings. Try a different video cable. Update graphics drivers.
Poor Image Quality	Incorrect resolution; OSD settings; Dirty screen.	Set display to native resolution (2560x1440). Adjust brightness/contrast/color in OSD. Clean screen.
Stuck/Dead Pixels	Manufacturing defect.	Refer to warranty policy. Contact KOORUI customer support if within warranty terms.

If the problem persists after trying these steps, please contact KOORUI customer support for further assistance.

SPECIFICATIONS

Detailed technical specifications for the KOORUI 27" 200Hz Gaming Monitor (Model GN07).

Feature	Detail
Product Dimensions	8.46 x 24.15 x 18.59 inches
Item Weight	13.02 pounds
Manufacturer	KOORUI
ASIN	B0CGMC4MP1
Item Model Number	GN07
Standing Screen Display Size	27 Inches
Aspect Ratio	16:9
Resolution	2560 x 1440 Pixels (QHD Wide 1440p)
Image Brightness	400 Nit
Screen Surface Description	Flat
Refresh Rate	200Hz
Response Time	1ms
Color Gamut	DCI-P3 95%
HDR Support	HDR 400
Adaptive Sync	FreeSync Premium, Adaptive G-Sync Compatible
Ports	2x HDMI, 1x DisplayPort, Audio Out
VESA Compatibility	75x75mm

WARRANTY AND SUPPORT

KOORUI is committed to providing high-quality products and excellent customer service.

- **Warranty Period:** The KOORUI GN07 monitor comes with a 3-year warranty from the date of purchase.
- **Replacement Service:** A 12-month replacement service is provided for eligible issues.
- **Technical Support:** For any damage, malfunction, or missing accessories, please contact KOORUI technical support.
- **User Manual (PDF):** For a downloadable version of the user manual, please refer to the official product page or [click here](#).
- **Installation Manual (PDF):** For detailed installation instructions, please refer to the official product page or [click here](#).

For further assistance, please visit the official KOORUI website or contact their customer service team directly.