

ETENWOLF S6VO

ETENWOLF VORTEX S6 Portable Tire Inflator

Instruction Manual

Model: S6VO | Brand: ETENWOLF

PRODUCT OVERVIEW

The ETENWOLF VORTEX S6 is a high-performance cordless air compressor designed for efficient inflation of various items, from heavy-duty vehicle tires to recreational inflatables. It features a powerful 19200 mAh lithium battery, a dual-cylinder motor for ultra-fast inflation, and intelligent auto-stop functionality.

- **Ultra-Fast Inflation:** 1.5 CFM@0 PSI or 42 L/Min@0 PSI, capable of filling a 31" tire (30-35 PSI) in 1 minute.
- **High Capacity Battery:** Built-in 19200 mAh lithium battery, able to inflate multiple F150 tires on a single charge.
- **100% Duty Cycle:** Durable dual-cylinder and dedicated cooling system allow for continuous inflation without breaks.
- **Smart Features:** Auto-stop at target pressure, seven preset modes, and preset pressure memory.
- **Integrated Lighting:** 1000 lumens LED light for illumination in dark conditions, including strobe and SOS modes.
- **Power Bank Functionality:** USB-C 45W dual-direction fast charging port for charging the unit and powering external electronic devices.



Figure 1: ETENWOLF VORTEX S6 Portable Tire Inflator.

PACKAGE CONTENTS

Ensure all items are present upon unboxing:

- VORTEX S6 Air Compressor (x1)
- Air Chuck (x1)
- 45W Charger (x1)
- Nozzles (x2)
- Ball Needle (x1)
- Presta Valve Adapter (x1)
- Storage Bag (x1)
- USB-C to USB-C Cable (x1)

Active Cooling Non-stop Inflation

The industry-leading airflow design reduces heat buildup.
Continuously inflating for your pickup's tires.

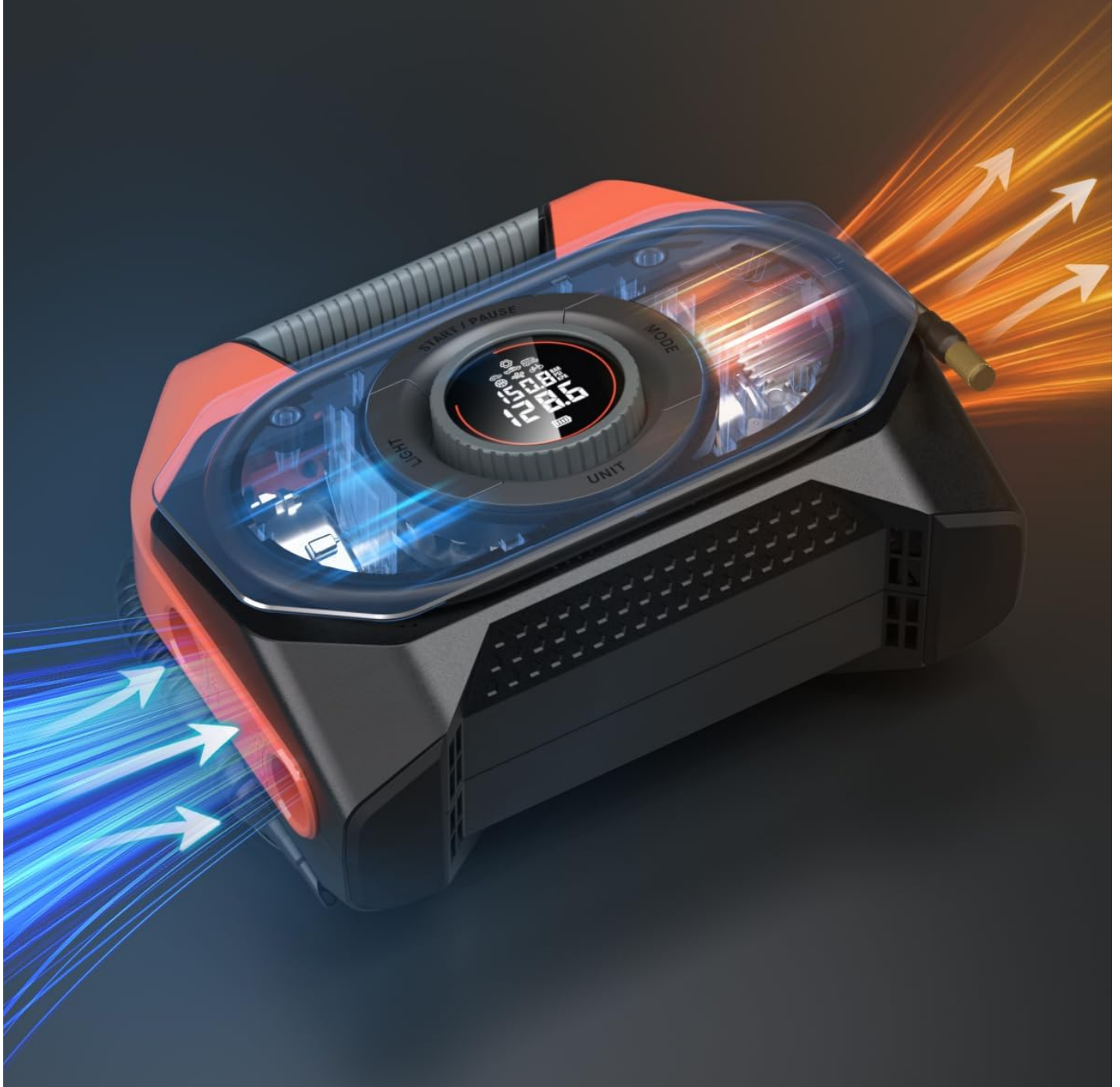


Figure 2: All components included in the ETENWOLF VORTEX S6 package.

SETUP

1. Initial Charging

Before first use, fully charge the VORTEX S6. Connect the provided 45W USB-C charger to the unit's USB-C port located at the back (under the flap) and plug it into a wall outlet. The display will indicate charging status.



Figure 3: Charging the VORTEX S6 using the provided USB-C charger.

2. Attaching the Air Hose

For high-pressure inflation (tires), attach the high-pressure hose to the brass connector on the side of the unit. For high-volume inflation/deflation (air mattresses, pool floats), use the larger hose that stores in the back channel.

Package Content



Figure 4: High-pressure hose connection point.

OPERATING INSTRUCTIONS

1. Power On/Off

Press and hold the "Start/Pause" button on the central dial to power on the unit. The digital display will illuminate. To power off, press and hold the same button.

2. Selecting Units and Modes

- **Unit Selection:** Press the "Unit" button below the dial to cycle through pressure units (PSI, Bar, KPA).
- **Mode Selection:** Rotate the central dial to select from seven preset inflation modes (e.g., car, motorcycle, bicycle, ball, RV, pickup). Each mode has a default pressure setting.
- **Adjusting Pressure:** Once a mode is selected, rotate the central dial to adjust the target pressure in 0.1 PSI increments.



Figure 5: Digital display showing current and target pressure, battery level, and mode selection.

3. Inflation Process

1. Connect the appropriate hose and nozzle to the item you wish to inflate.
2. Ensure the connection is secure to prevent air leakage.
3. Select your desired mode and set the target pressure.
4. Press the "Start/Pause" button to begin inflation. The unit will automatically stop once the target pressure is reached.

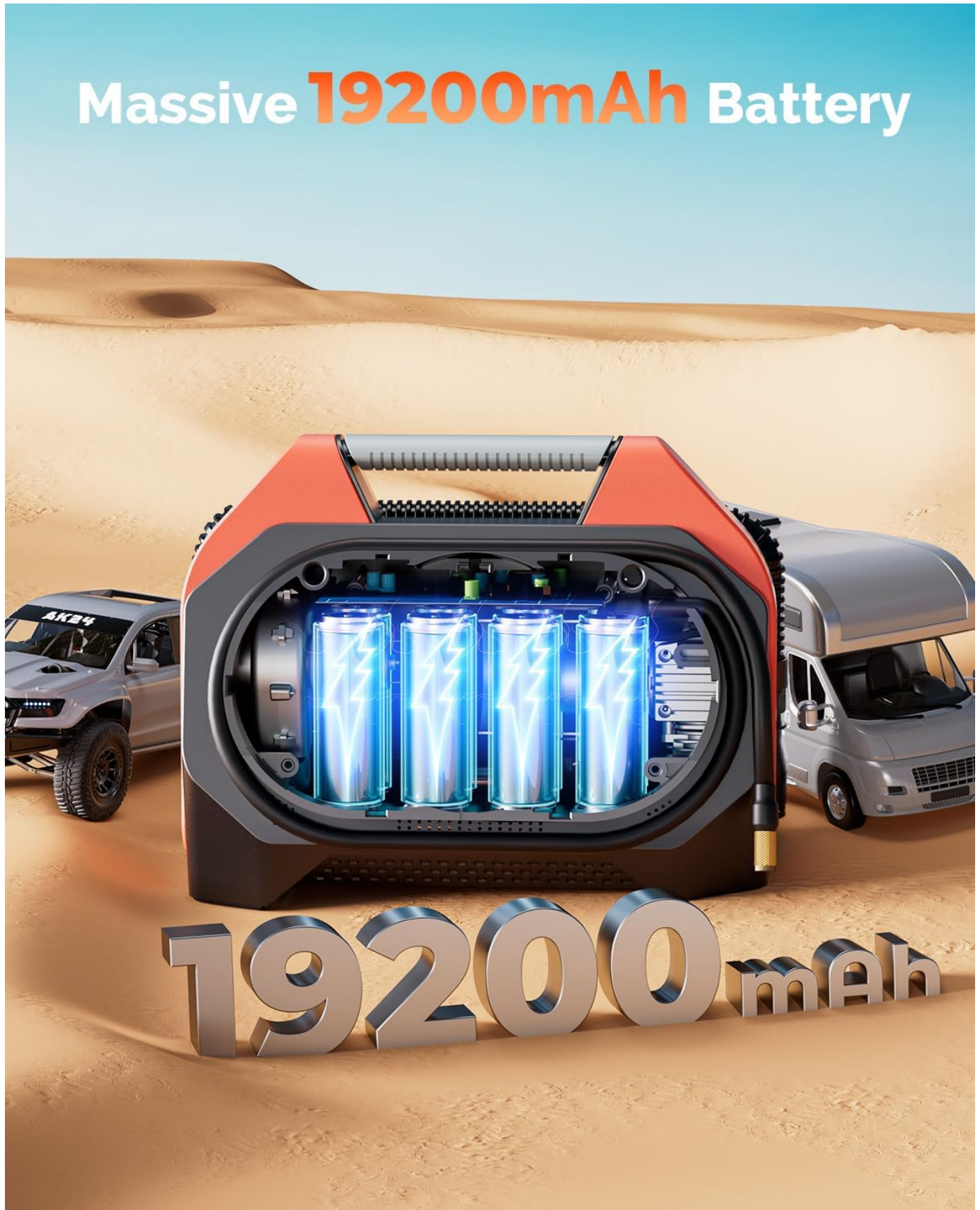


Figure 6: VORTEX S6 in use, inflating a large vehicle tire.

4. LED Light Functions

Press the "Light" button on the central dial to cycle through the LED light modes:

- Low Brightness
- High Brightness (1000 lumens)
- Strobe Light (for emergencies)
- SOS Signal



Figure 7: The integrated LED light for visibility in low-light conditions.

5. Power Bank Usage

The VORTEX S6 can act as a power bank. Connect your electronic device (e.g., smartphone, tablet) to the USB-C (in/out) or USB-A (out) ports located under the flap at the back of the unit.



Figure 8: Using the VORTEX S6 to charge other devices.

MAINTENANCE

- Keep the unit clean and free from dust and debris.
- Store in the provided storage bag when not in use to protect it.
- Avoid exposing the unit to extreme temperatures or direct sunlight for prolonged periods.
- Regularly check the air hoses and nozzles for any signs of wear or damage.

TROUBLESHOOTING

Problem	Possible Cause	Solution
Unit does not power on.	Low battery.	Charge the unit fully.
Inflation is slow or not reaching target pressure.	Hose/nozzle not securely attached; valve core issue.	Ensure all connections are tight. Check the item's valve for damage.
Unit stops unexpectedly during inflation.	Target pressure reached; internal safety mechanism activated.	Check the set pressure. Allow unit to cool down if it feels hot.

SPECIFICATIONS

Feature	Detail
Brand	ETENWOLF
Model Name	S6VO
Voltage	12 Volts
Power Source	Battery Powered
Noise Level	78 dB
Max Operating Pressure	160 PSI
Air Flow Capacity	1.5 CFM (42 LPM)
Battery Capacity	19200 mAh Lithium Ion
Item Weight	6 Pounds
Product Dimensions	11.8"L x 5.5"W x 9.45"H
Color	Vivid Orange



Figure 9: Dimensions of the ETENWOLF VORTEX S6.

WARRANTY AND SUPPORT

The ETENWOLF VORTEX S6 comes with a **2-year warranty**. For any inquiries or support, please refer to the contact information provided in your product packaging or visit the official ETENWOLF website.

- 3-Year Protection Plan
- 4-Year Protection Plan
- Complete Protect (monthly plan covering eligible purchases)

PRODUCT VIDEOS

ETENWOLF VORTEX S6 Features Overview

Your browser does not support the video tag.

This video provides a detailed overview of the ETENWOLF VORTEX S6, showcasing its design, features, and various functionalities including the digital display, preset modes, and integrated lighting. It highlights the convenience of its cordless operation and the robust build quality.

