

ABASK A8 Dashcam

Abask A8 Dashcam User Manual

Model: **A8 Dashcam** | Brand: **ABASK**

INTRODUCTION

Thank you for choosing the Abask A8 Dashcam. This device is designed to provide reliable video recording of your journeys, offering enhanced safety and peace of mind. With its advanced features including 4K front recording, 1080P cabin recording, GPS tracking, super night vision, G-sensor, loop recording, and 24-hour parking monitoring, the A8 Dashcam is your dependable eye on the road. Please read this manual carefully to ensure proper installation and operation of your device.

WHAT'S IN THE BOX

Please check the package contents upon unboxing to ensure all items are present:

- 1 x Abask A8 4K Dashcam
- 1 x 32GB Micro SD Card
- 1 x Car Charger (3.5M cable)
- 1 x USB Cable (0.5M)
- 1 x Suction Cup Mount with GPS
- 1 x User Manual
- 1 x Pry Tool
- 4 x Cable Ties



Image: The Abask A8 Dashcam with its suction cup mount, a 32GB Micro SD card, and a USB/Type-C card reader, illustrating the complete package contents.

SETUP GUIDE

1. Micro SD Card Insertion

1. Ensure the dashcam is powered off.
2. Insert the provided 32GB Micro SD card into the TF card slot on the side of the dashcam until it clicks into place.
3. For optimal performance, it is recommended to format the Micro SD card within the dashcam's settings before first use.

2. Installation in Vehicle

1. Clean the area on your windshield where you intend to mount the dashcam.
2. Attach the suction cup mount to the dashcam, then firmly press the suction cup onto the cleaned

windshield surface and lock it in place. Position the dashcam to ensure a clear view of the road ahead and the vehicle's interior.

3. Connect the car charger to the dashcam's power input port.
4. Plug the other end of the car charger into your vehicle's cigarette lighter socket.
5. Route the power cable neatly along the windshield and dashboard edges using the provided pry tool and cable ties to avoid obstructing your view or driving.

OPERATING INSTRUCTIONS

The Abask A8 Dashcam automatically powers on and begins recording when your vehicle starts. Familiarize yourself with its key features:

1. 4K Front + 1080P Cabin Recording

The dashcam is equipped with a front camera recording in 4K (2160P) resolution and a cabin camera recording in 1080P resolution. This dual-camera system captures high-definition video of both the road ahead and the vehicle's interior simultaneously, providing comprehensive video evidence in case of an accident or dispute.



4K Front

1080P Cabin

4K + 1080P Ultra HD Dash Cam

High definition video of the road ahead and the interior of the vehicle can be recorded at the same time.

Image: Illustration of the dual recording capability, showing a clear 4K view of the road ahead and a 1080P view of the vehicle's cabin.

2. GPS Functionality

The integrated GPS module allows the dashcam to track and record your driving route and speed. This data can be crucial evidence, providing an accurate record of your vehicle's location and movement during an event. You can review this information using compatible playback software on a computer.

Dual Dash Cam with GPS Modut

The built-in GPS module can record driving speed, latitude, longitude and driving route. Easily play videos with your vehicle's



Image: A visual representation of the GPS module's function, showing how driving speed, latitude, longitude, and the driving route are recorded and can be viewed on a map.

3. Super Night Vision

Equipped with 4 discreet infrared (IR) lights and WDR (Wide Dynamic Range) technology, the Abask A8 Dashcam ensures clear and detailed images and videos even in low-light conditions or complete darkness. This feature is particularly beneficial for night driving, providing enhanced visibility and recording quality.

4K Front



1080P Cabin



Excellent Night Vision

The driving recorder has four infrared fill lights, which can record clear video even at night



IR LED Lights



4K + 1080P



WDR

Image: Detail of the dashcam's infrared lights and a depiction of its night vision capabilities, showing clear recording in dark environments.

4. G-Sensor & Loop Recording

- **G-Sensor (Gravity Sensor):** With variable sensitivity, the G-Sensor automatically detects sudden shocks, collisions, or abrupt braking. In such events, it immediately saves and locks the current video segment, preventing it from being overwritten by loop recording. This ensures critical footage is preserved as evidence.
- **Loop Recording:** This function allows the dashcam to continuously record by overwriting the oldest video files when the memory card is full. This ensures that recording never stops due to a full card, while protected G-sensor triggered files remain safe.

G-sensor & Loop Recording

If a car crash or collision occurs, the dash cam will automatically lock and save the current recorded video as evidence that will not be overwritten by loop recording.

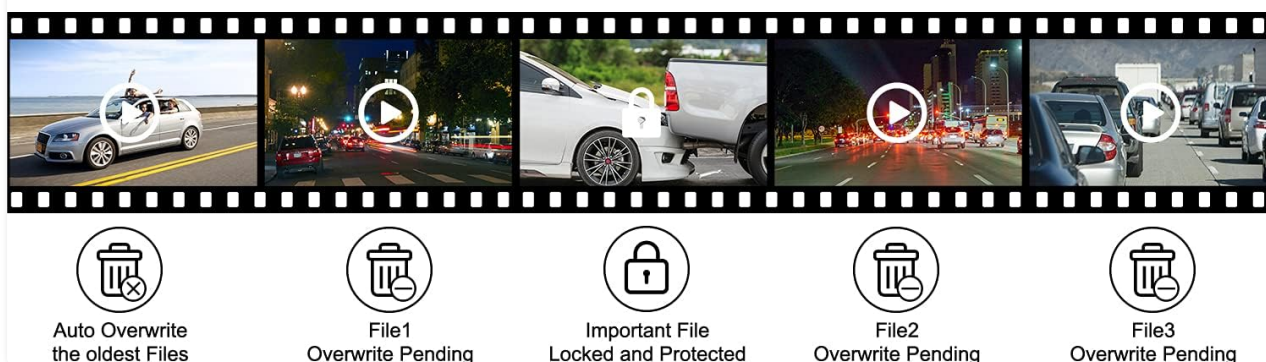
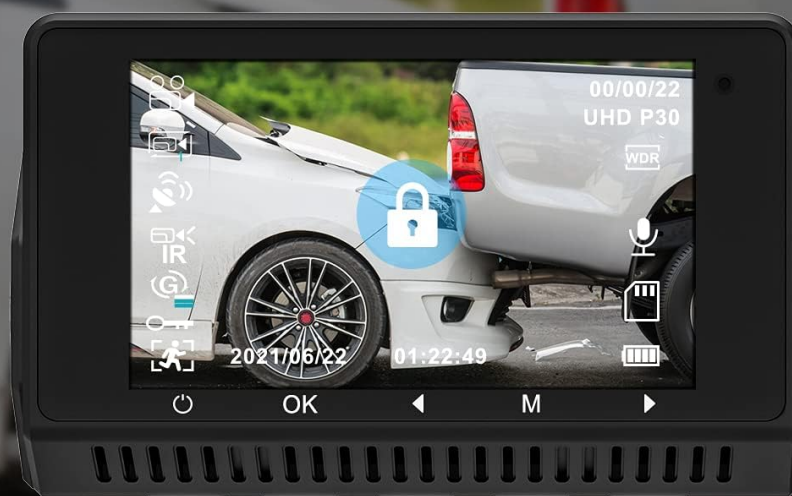


Image: Visual explanation of G-sensor and loop recording, showing a locked video file and the process of older files being overwritten.

5. Wide-Angle Field of View

The Abask A8 Dashcam offers a total 310° wide-angle field of view, with a 170° front lens and a 140° interior lens. This extensive coverage provides a comprehensive view of the road ahead and the entire inside of your car, minimizing blind spots and capturing more details.

Total 310° Wide-angle Field of View



170° Front , 140° Interior

Giving you a full view of the road around the front and the entire inside of your car.



Image: A graphic illustrating the 170° front and 140° interior wide-angle coverage of the dashcam, providing a full view of the surroundings.

6. 24-Hour Parking Mode

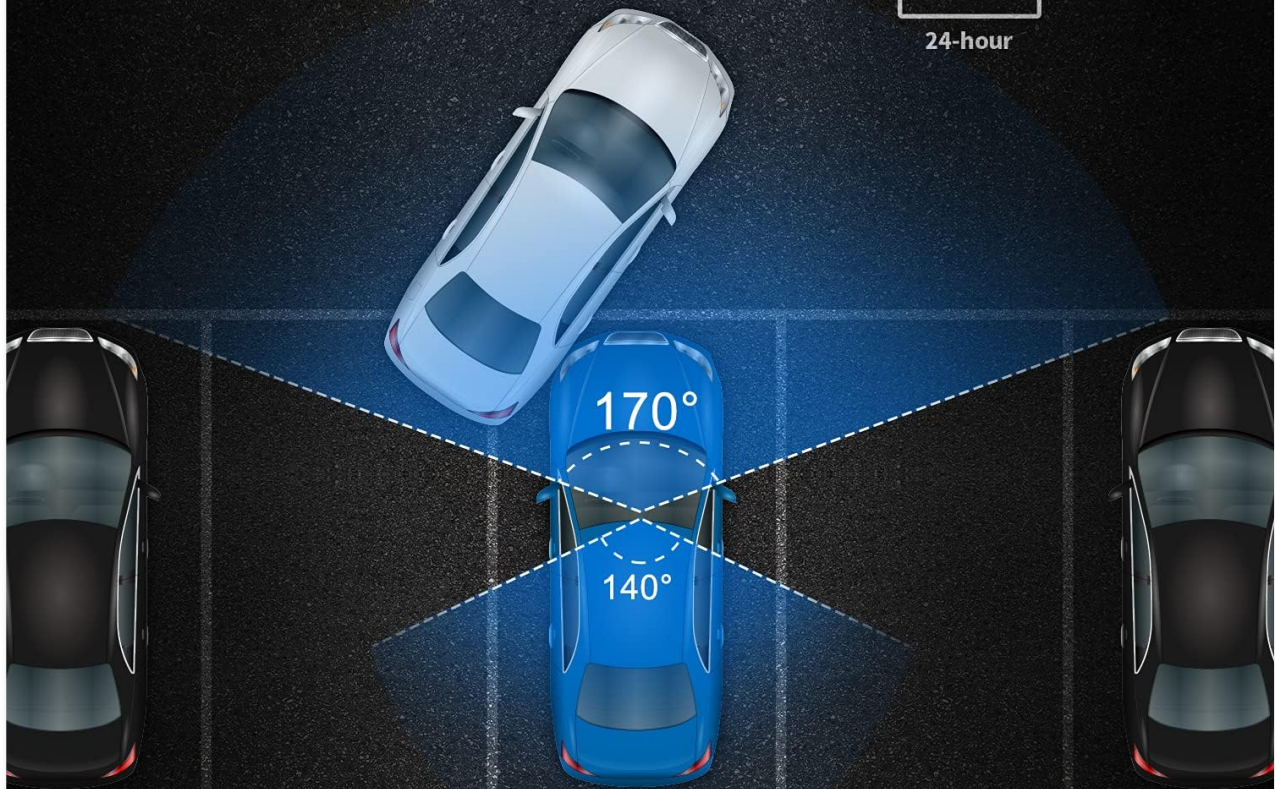
When your vehicle is parked, the dashcam's 24-hour parking mode monitors for impacts. If a shock is detected, the camera will automatically turn on and begin recording video, providing evidence if your car is scratched or damaged while unattended. *Note: To enable this function, a hardwire kit (sold separately) is required to connect the dashcam directly to your car's fuse box for continuous power.*

24 Hour Parking Mode

Monitor your car 24/7 when you are away.
Once it detects an impact it will begin to record video



24-hour



Note : In order to use parking mode,
you will need to hardwire the dash cam into your car's fuse box

Image: A diagram showing the 24-hour parking mode's detection range around a parked vehicle, highlighting its ability to monitor for impacts.

MAINTENANCE

- **Cleaning:** Use a soft, dry cloth to clean the dashcam's lens and screen. Avoid using abrasive cleaners or solvents that could damage the device.
- **Micro SD Card Care:** Regularly format your Micro SD card (at least once a month) to maintain optimal recording performance and prevent data corruption. Use a high-quality, genuine Micro SD card from a reputable brand.
- **Temperature:** Avoid exposing the dashcam to extreme temperatures for prolonged periods, as this can affect its performance and lifespan.
- **Firmware Updates:** Check the official ABASK website periodically for any available firmware updates to ensure your dashcam has the latest features and bug fixes.

TROUBLESHOOTING

If you encounter any issues with your Abask A8 Dashcam, please refer to the following common problems and solutions:

Problem	Possible Cause / Solution
Dashcam turns off unexpectedly.	<ul style="list-style-type: none">• Power Supply: Ensure the car charger is securely connected and providing stable 5V/1.5A power. Avoid using non-original chargers.• Battery/Capacitor: The device uses a super capacitor for power stability. If issues persist, contact support.• Overheating: Ensure proper ventilation. If the device overheats, it may shut down to prevent damage.
Video quality is poor or blurry.	<ul style="list-style-type: none">• Lens Cleanliness: Clean the camera lenses with a soft cloth.• Protective Film: Ensure any protective film has been removed from the lenses.• Windshield Cleanliness: A dirty windshield can affect video clarity.
Micro SD card error / Cannot record.	<ul style="list-style-type: none">• Format Card: Format the Micro SD card within the dashcam's settings.• Card Compatibility: Ensure you are using a high-speed (Class 10 or U3 recommended) Micro SD card up to 256GB.• Card Damage: Try a different Micro SD card to rule out a faulty card.
GPS not tracking.	<ul style="list-style-type: none">• Signal: Ensure the dashcam has a clear view of the sky for GPS signal acquisition. Avoid mounting under metallic tints or near other electronic devices that might interfere.• Mount: Ensure the GPS suction cup mount is correctly attached and functioning.

If these solutions do not resolve your issue, please contact ABASK customer support for further assistance.

TECHNICAL SPECIFICATIONS

Feature	Specification
Brand	ABASK
Model Name	A8 Dashcam
Color	Black
Screen Size	11 Centimeters (approx. 5 inches)
Video Recording Resolution	4K (3840 x 2160) Front, 1080P Cabin
Orientation	Front and Interior
Special Features	Night Vision, GPS, Parking Monitor, Motion Detection, G-Sensor, Loop Recording

Feature	Specification
Compatible Devices	Car
Mounting Type	Windshield Mount
Connectivity Technology	Car Charger
Rechargeable Battery	No (uses Super Capacitor)

WARRANTY AND SUPPORT



The Abask A8 Dashcam comes with a **2-year manufacturer's warranty**. This warranty covers defects in materials and workmanship under normal use.




For any questions, technical support, or warranty claims, please do not hesitate to contact ABASK customer service. We are committed to providing a satisfactory solution within 24 hours of your inquiry.

Please refer to the contact information provided with your product packaging or visit the official ABASK website for support details.

© 2024 ABASK. All rights reserved.

Related Documents - A8 Dashcam

<div><div>FHD Dual 1080P</div><div>J05 Dash Cam</div><div></div><div>[User Manual]</div></div>	<div>Abask J05 Dash Cam User Manual</div> <div>User manual for the Abask J05 Dash Cam, detailing setup, operation, features, and troubleshooting for this FHD Dual 1080P vehicle camera.</div>
<div><div>Dash Camera</div><div></div><div>USER MANUAL</div></div>	<div>Dash Camera User Manual</div> <div>User manual for the Dash Camera (Car DVR) providing instructions on installation, operation, settings, and troubleshooting. Features include 1080P recording, wide-angle lens, motion detection, and parking monitoring.</div>

<div data-bbox="119 100 287 324"><p>Abask Ultra HD 4K Dash Camera A8</p></div>	<p>Abask A8 4K Dash Camera User Manual</p> <p>Comprehensive user manual for the Abask A8 4K Dash Camera, covering installation, operation, settings, and after-sales support. Features Ultra HD video, GPS, and Parking Monitor.</p>
<div data-bbox="119 403 287 627"><p>Abask Instruction Manual Wildlife Camera</p></div>	<p>Abask Wildlife Camera Instruction Manual</p> <p>Comprehensive instruction manual for the Abask Wildlife Camera, covering setup, operation, features, and technical specifications. Learn how to install batteries, memory cards, and use the device for surveillance and wildlife observation.</p>
<div data-bbox="119 739 287 963"><p>UHD 4K WiFi J05Pro Dash Cam</p><p> User Manual </p></div>	<p>Abask J05Pro Dash Cam User Manual: UHD 4K WiFi</p> <p>User manual for the Abask J05Pro Dash Cam, featuring UHD 4K resolution, WiFi connectivity, and advanced features. This guide provides setup, operation, and troubleshooting instructions.</p>
	<p>abask ZD-X35 4K Dash Cam User Manual - Installation and Operation Guide</p> <p>Comprehensive user manual for the abask ZD-X35 4K Dash Cam. Learn about installation, setup, WiFi connection, operating modes, system settings, and after-sales support from Shenzhen Jingzhenda Industrial Co.Ltd.</p>