



[Manuals.plus](#) /

› [MEBERRY](#) /

› MEBERRY Tablet M8 User Manual

MEBERRY M8

MEBERRY Tablet M8 User Manual

Model: M8

1. INTRODUCTION

Thank you for purchasing the MEBERRY Tablet M8. This 12-inch Android 13 tablet is designed to provide a versatile and powerful computing experience, whether for work, learning, or entertainment. Featuring a vibrant 2K display, robust Octa-Core processor, and ample memory, the M8 is built for efficiency and enjoyment.

This manual provides essential information on setting up, operating, maintaining, and troubleshooting your device to ensure optimal performance and longevity.



Figure 1.1: MEBERRY Tablet M8 and its accompanying accessories.

2. WHAT'S IN THE BOX

Upon opening your MEBERRY Tablet M8 package, please verify that all the following items are included:

- MEBERRY Tablet M8 (12-inch, Gold)
- Bluetooth Keyboard
- Wireless Mouse
- Power Adapter
- USB-C Charging Cable
- USB-A to USB-C Adapter
- Protective Case
- Screen Protector (pre-applied or included separately)
- User Manual (this document)

3. SETUP GUIDE

3.1 Initial Charging

Before first use, it is recommended to fully charge your MEBERRY Tablet M8. Connect the provided USB-C charging cable to the tablet's USB-C port and the power adapter, then plug the adapter into a wall outlet. The charging indicator will illuminate.

3.2 Powering On/Off

- **To Power On:** Press and hold the Power button (located on the side of the tablet) for a few seconds until the MEBERRY logo appears on the screen.
- **To Power Off:** Press and hold the Power button until the power options menu appears. Select "Power off" and confirm.
- **To Restart:** From the power options menu, select "Restart."

3.3 Initial Setup Wizard

Upon first power-on, the Android 13 setup wizard will guide you through essential configurations:

1. Select your preferred language.
2. Connect to a Wi-Fi network.
3. Accept the terms and conditions.
4. Sign in with your Google account or create a new one.
5. Set up screen lock (PIN, pattern, or password).
6. Review and adjust privacy settings.

3.4 Connecting Accessories

Your MEBERRY Tablet M8 comes with a Bluetooth keyboard and a wireless mouse for enhanced productivity.

3.4.1 Bluetooth Keyboard

1. Ensure the keyboard is charged and powered on.
2. On your tablet, go to **Settings > Connected devices > Bluetooth**.
3. Turn on Bluetooth.
4. Put the keyboard into pairing mode (refer to the keyboard's specific instructions, usually by pressing a dedicated pairing button or key combination).
5. Select the keyboard from the list of available devices on your tablet and follow any on-screen prompts to complete pairing.

3.4.2 Wireless Mouse

The wireless mouse typically connects via a USB dongle. Use the provided USB-A to USB-C adapter to connect the mouse dongle to the tablet's USB-C port.

Large capacity battery life

Large 8000 mAh battery ensures that the tablet runs efficiently for long periods of time throughout the day

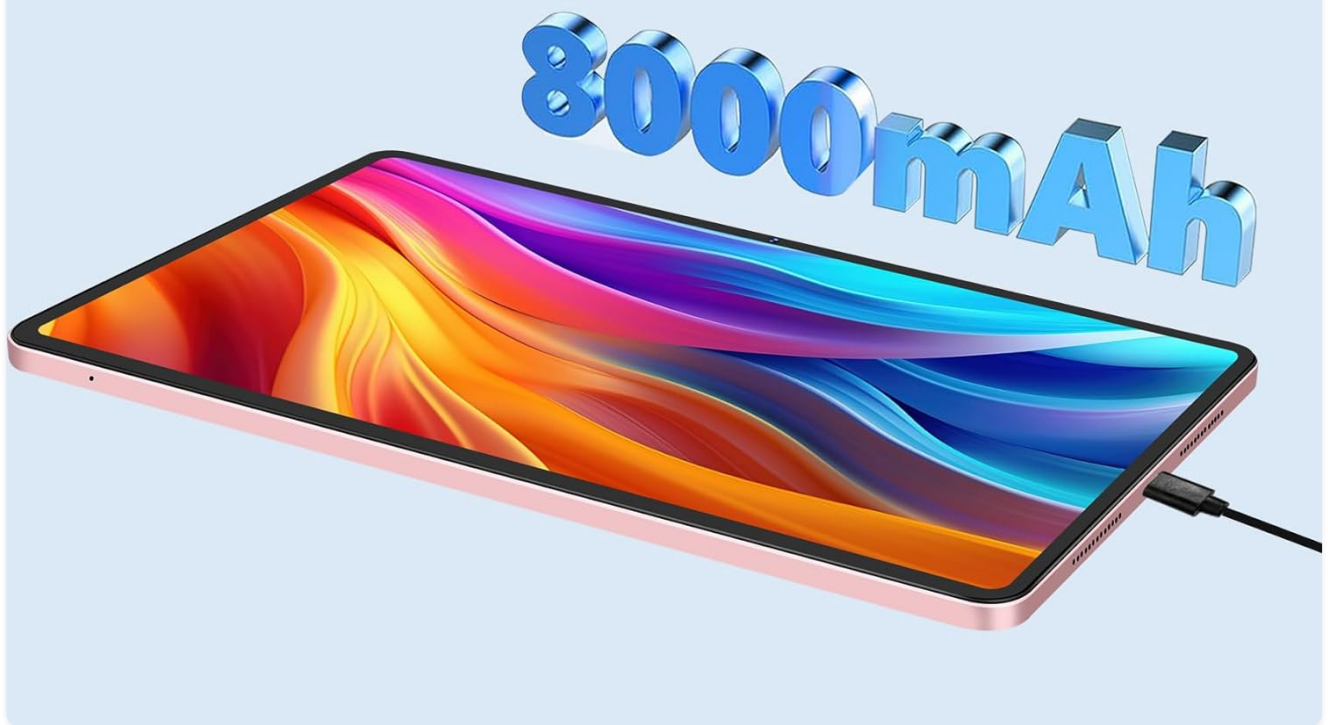


Figure 3.1: The MEBERRY Tablet M8 can be used as a 2-in-1 device with keyboard and mouse.

3.5 Inserting a Micro SD Card

The tablet supports storage expansion up to 1TB via a Micro SD card. Locate the SIM/SD card tray on the side of the tablet. Use the provided SIM ejector tool (if included) or a small paperclip to open the tray. Carefully place the Micro SD card into the designated slot and reinsert the tray.

4. OPERATING YOUR TABLET

4.1 Display and Visuals

The MEBERRY Tablet M8 features a 12-inch 2K HD display with a resolution of 2000*1200 pixels, offering clear and vibrant visuals. The screen incorporates new touch technology for improved viewing angles and touch sensitivity.

- **Eye Protection Mode:** Reduces blue light emission to minimize eye strain, especially during prolonged use.

This can typically be found in Display settings.

- **Dark Mode:** Changes the system's color scheme to a darker palette, which can be more comfortable in low-light environments and save battery on some display types.

Extra large and wide 12" display with thin bezel 2000x1200 Advanced Visual Experience

Delivering an incredibly immersive viewing experience on the MEBERRY M8's large screen with bright colours and ultra-high definition picture quality for an immersive audio-visual experience.

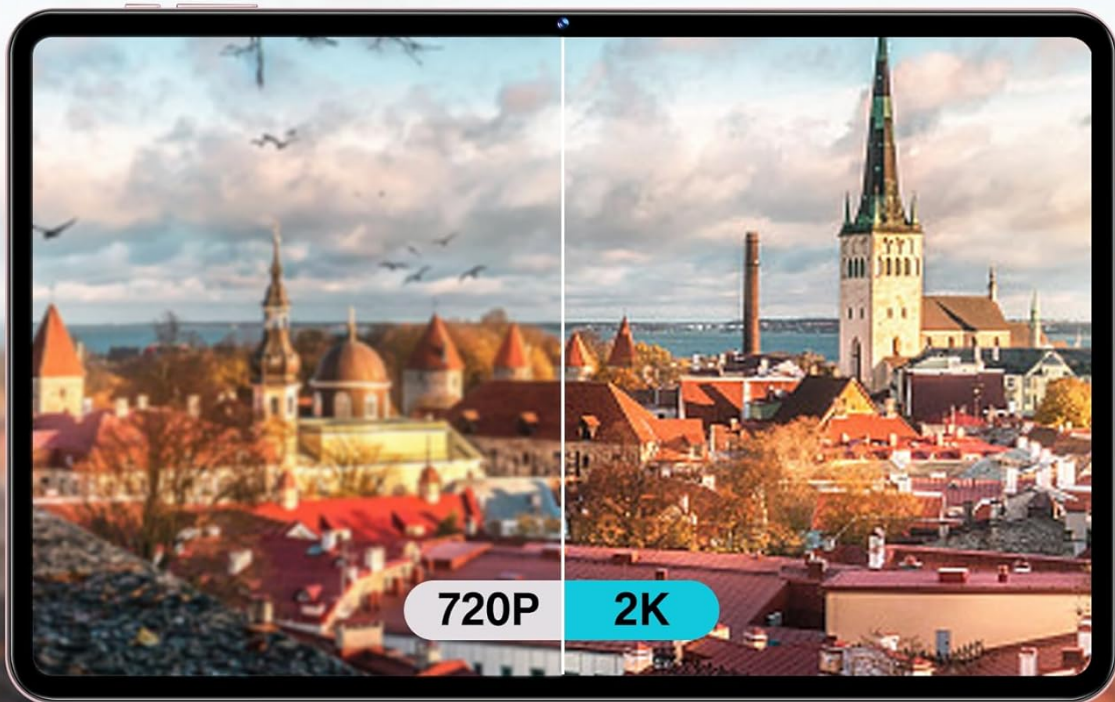


Figure 4.1: The 2K display offers significantly enhanced visual clarity.

4.2 Performance and Storage

The tablet runs on the latest Android 13 operating system, providing enhanced privacy, security, and overall system speed. It is powered by a stable Octa-Core processor (MT8183) with a clock speed of up to 2.0 GHz, ensuring fast application launches and efficient multitasking.

Best performing processor

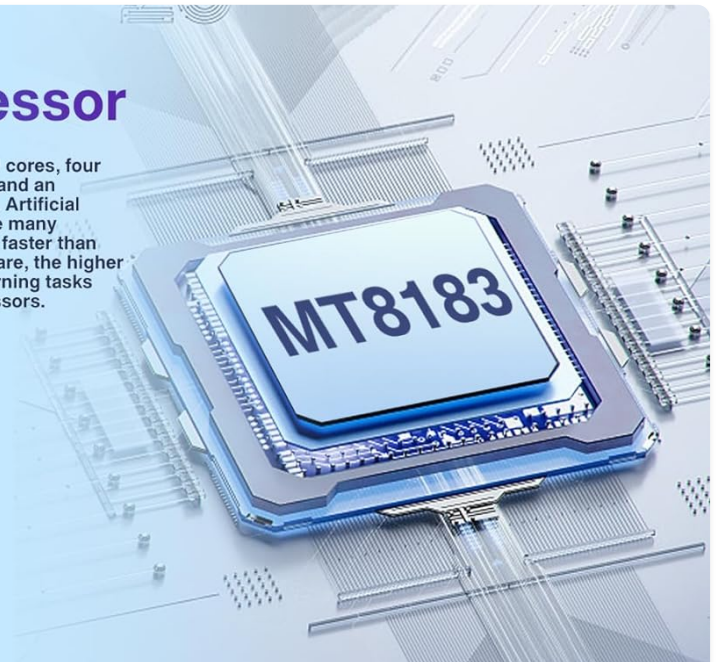
The MT8183 is an octa-core processor. The MT8183 has eight CPU cores, four Cortex-A73 performance cores, four Cortex-A53 efficiency cores, and an integrated graphics processor, ARM Mali-G72, with three clusters. Artificial Intelligence and Machine Learning enabled processors can handle many calculations, especially audio, image and video processing, much faster than traditional processors. The more data collected through the software, the higher the performance of the machine learning algorithms. Machine learning tasks can be processed up to 10,000 times faster than traditional processors.



MT8183 Octa-Core
Unisoc



A73 High Performance
A55 Energy efficiency



16GB RAM+128GB ROM



Equipped with 16GB RAM and 128GB ROM, the M8 allows you to switch between windows in multiple apps at will with silky smoothness and supports 1TB of storage expansion, so you don't have to worry about memory at all.



16GB
RAM



128GB
ROM



Up to 1TB
Expansion

Figure 4.2: The MT8183 Octa-Core processor powers the MEBERRY M8.

The M8 comes with 16GB of RAM (10GB physical + 6GB virtual) and 128GB of internal storage (ROM). This ample memory ensures smooth operation and sufficient space for applications and files. Storage can be expanded by up to 1TB using a Micro SD card.

Long focus anti shake cameras

13 MP

Rear camera

5 MP

Front camera

2 MP

Mini cameras

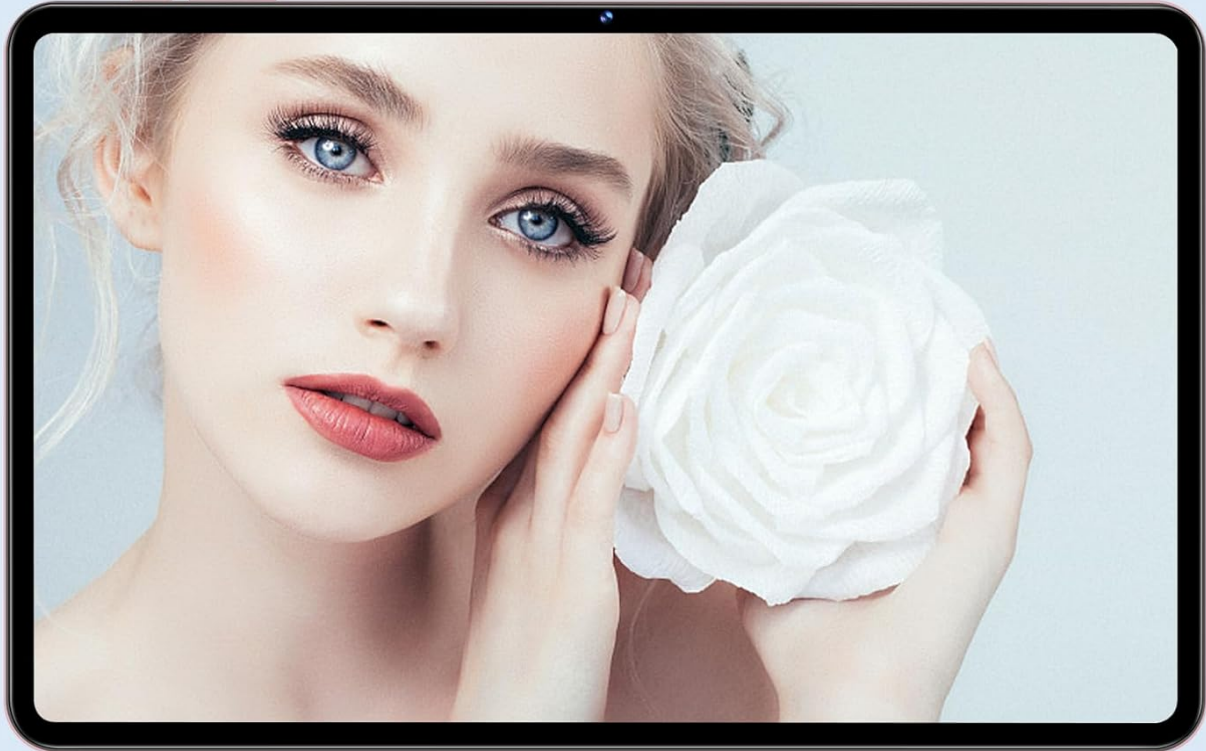


Figure 4.3: Memory and storage capabilities of the MEBERRY M8.

4.3 Battery Management

Equipped with an 8000mAh battery and intelligent power management, the tablet is designed for extended use. Expected battery life includes:

- Up to 14 hours of game play
- Up to 16 hours of video watching
- Up to 72 hours of standby time

2.4G/5G WiFi+Bluetooth 5.0

2.4GHz/5GHz WIFI and Bluetooth 5.0 give you a fast and stable wireless connection experience. Our devices support the latest wireless technologies so you can enjoy high-speed Internet access and seamless device connectivity at home, in the office and on the go.



Dual Speaker



2.4Ghz+5Ghz WiFi



Bluetooth 5.0



Figure 4.4: Battery performance overview.

4.4 Camera Usage

The MEBERRY M8 features a 13MP rear camera and a 5MP front camera, suitable for capturing photos, recording videos, and engaging in video calls.

- **Taking Photos/Videos:** Open the Camera application from the home screen or app drawer. Select photo or video mode and tap the shutter button.
- **Video Calls:** Use popular communication apps (e.g., Google Meet, Zoom, Skype) that utilize the front camera for video conferencing.



Figure 4.5: Camera specifications are part of the overall product features.

4.5 Connectivity

The tablet supports both 2.4Ghz and 5.0Ghz Wi-Fi networks (802.11 a/b/g/n/ac) and Bluetooth 5.0, ensuring stable and fast wireless connections.

- **Wi-Fi:** To connect to Wi-Fi, go to **Settings > Network & internet > Internet**. Select your desired network and enter the password if required.
- **Bluetooth:** To connect Bluetooth devices, go to **Settings > Connected devices > Bluetooth**. Turn on Bluetooth and pair with your device.
- **Audio:** The tablet is equipped with four speakers for high-quality audio output.

5. MAINTENANCE

5.1 Cleaning the Tablet

To clean the screen and body of your tablet, use a soft, lint-free cloth. For stubborn smudges, slightly dampen the cloth with water or a screen-specific cleaning solution. Avoid using harsh chemicals or abrasive materials.

5.2 Battery Care

- Avoid exposing the tablet to extreme temperatures (hot or cold).
- Do not let the battery completely drain frequently. Charge it before it reaches 0%.
- Use only the provided charger or a certified compatible charger.

5.3 Software Updates

Regularly check for and install system updates to ensure your tablet has the latest features, security patches, and performance improvements. Go to **Settings > System > System update**.

5.4 Storage Management

To maintain optimal performance, periodically manage your tablet's storage. Delete unnecessary files, uninstall unused apps, and clear app caches. You can check storage usage in **Settings > Storage**.

6. TROUBLESHOOTING

This section addresses common issues you might encounter with your MEBERRY Tablet M8.

Problem	Possible Cause	Solution
Tablet does not turn on	Low battery; System crash	Charge the tablet for at least 30 minutes. Press and hold the Power button for 10-15 seconds to force a restart.
Wi-Fi connection issues	Incorrect password; Router issue; Tablet Wi-Fi module issue	Verify Wi-Fi password. Restart your router. Toggle Wi-Fi off/on on the tablet. Forget the network and reconnect.
Bluetooth accessories not connecting	Accessory not in pairing mode; Bluetooth off on tablet	Ensure accessory is in pairing mode. Check tablet's Bluetooth settings. Restart both devices.
Tablet is slow or freezing	Too many apps open; Low storage; Software bug	Close background apps. Clear app caches. Free up storage space. Restart the tablet.
Screen not responding	Temporary software glitch	Force restart the tablet by holding the Power button.

6.1 Factory Reset

If issues persist, a factory reset can resolve many software-related problems. **Warning: This will erase all data on your tablet. Back up important files before proceeding.**

1. Go to **Settings > System > Reset options**.
2. Select **Erase all data (factory reset)**.
3. Confirm your decision and enter your PIN/pattern/password if prompted.

4. The tablet will restart and begin the reset process.

7. SPECIFICATIONS

Detailed technical specifications for the MEBERRY Tablet M8:

Feature	Specification
Model Name	M8
Operating System	Android 13
Screen Size	12 Inches
Screen Resolution	2000*1200 Pixels (2K HD)
Processor	Octa-Core (MT8183), 2.0 GHz
RAM	16GB (10GB physical + 6GB virtual)
Internal Storage (ROM)	128GB
Expandable Storage	Up to 1TB via Micro SD card
Rear Camera	13 MP
Front Camera	5 MP
Battery Capacity	8000mAh
Wireless Connectivity	802.11 a/b/g/n/ac (2.4Ghz & 5.0Ghz WiFi)
Bluetooth	Bluetooth 5.0
Audio	Dual Speakers
Dimensions (LxWxH)	10.9 x 6.85 x 0.35 inches
Item Weight	4.62 pounds
Color	M8 Gold

8. WARRANTY AND SUPPORT

MEBERRY is committed to providing quality products and customer experience. For any product-related inquiries, technical support, or warranty claims, please refer to the contact information provided with your purchase documentation or visit the official MEBERRY support website.

Please retain your proof of purchase for warranty purposes.

© 2025 MEBERRY. All rights reserved.