

Zunate Sxhlseller26khpa3ymr

Zunate Portable 4G USB Network Adapter User Manual

Model: Sxhlseller26khpa3ymr

1. INTRODUCTION

Thank you for choosing the Zunate Portable 4G USB Network Adapter. This device provides high-speed 4G internet access by converting a 4G signal into a Wi-Fi hotspot, allowing multiple devices to connect simultaneously. This manual will guide you through the setup, operation, and maintenance of your device.

2. SAFETY INFORMATION

- Keep the device away from water, moisture, and extreme temperatures.
- Do not attempt to disassemble or repair the device yourself. This will void the warranty.
- Use only compatible SIM cards.
- Avoid exposing the device to direct sunlight for extended periods.
- Ensure proper ventilation when in use to prevent overheating.

3. PACKAGE CONTENTS

- 1 x Zunate Portable 4G USB Network Adapter
- 1 x User Manual (this document)

4. PRODUCT OVERVIEW

The Zunate Portable 4G USB Network Adapter is a compact device designed for mobile internet access. It features a USB connector for power and a slot for a standard SIM card.



Figure 1: Front view of the Zunate Portable 4G USB Network Adapter with its protective cap on. The device is white with a red accent and features a 4G LTE logo and signal indicators.



Figure 2: Back view of the Zunate 4G LTE Wifi Modem, showing regulatory markings like CE and RoHS, and indicating it is 'Made in China'.

5. SETUP

5.1 Inserting the SIM Card

1. Gently remove the back cover of the device. This may require careful prying along the edges.

2. Locate the standard SIM card slot.
3. Insert your activated standard SIM card into the slot with the gold contacts facing down and the notched corner aligned correctly. Ensure it clicks into place.
4. Replace the back cover, ensuring it is securely fastened.



Figure 3: The Zunate Portable 4G USB Network Adapter with its protective cap removed, revealing the standard USB-A connector. The SIM card slot is typically located under a removable cover on the device body.

5.2 Connecting to Power

The device is USB powered. Connect the USB-A connector of the adapter to any standard USB power source:

- A USB port on a laptop or desktop computer.
- A USB wall charger (e.g., mobile phone charger).
- A car charger with a USB port.
- A power bank.

Once connected, the device will power on automatically. The indicator lights will illuminate, signifying that the device is active and attempting to establish a network connection.

6. OPERATING INSTRUCTIONS

6.1 Connecting Devices to the Wi-Fi Hotspot

After the device is powered on and has established a 4G connection (indicated by stable signal lights), it will broadcast a Wi-Fi network.

1. On your mobile phone, laptop, smart TV, or tablet, open your Wi-Fi settings.

2. Search for available Wi-Fi networks. The network name (SSID) and password (WPA/WPA2 key) are typically printed on a label inside the device or on the packaging.
3. Select the network name corresponding to your Zunate adapter.
4. Enter the Wi-Fi password when prompted.
5. Your device should now be connected to the internet via the Zunate 4G USB Network Adapter.

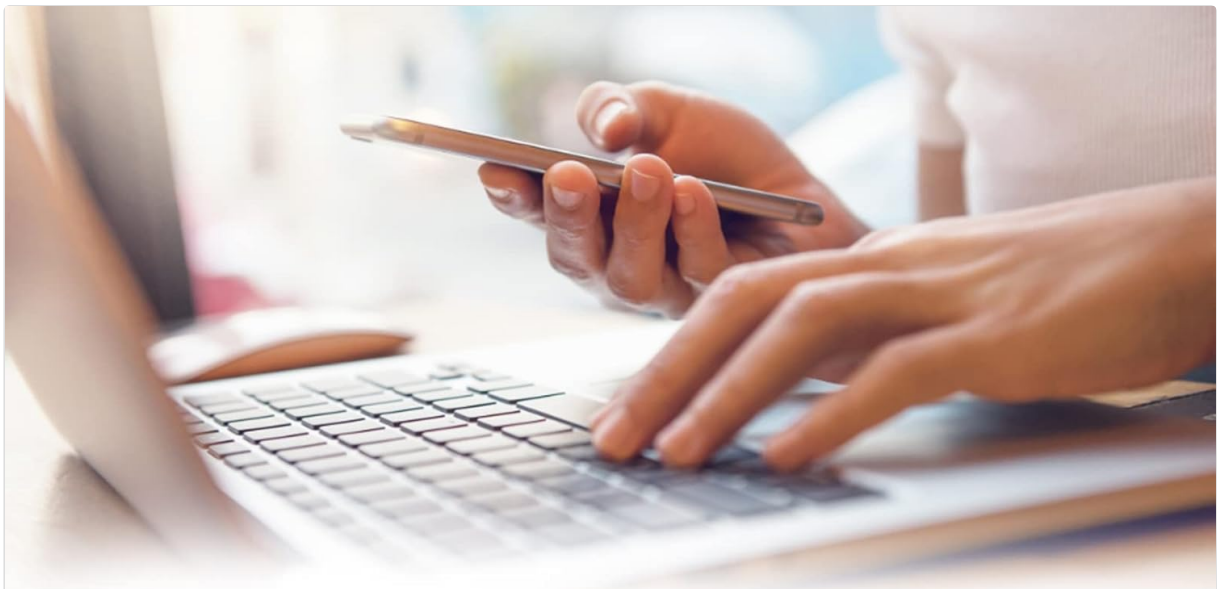
The adapter supports up to 10 users simultaneously.



Figure 4: A user working on a laptop and tablet, illustrating the multi-device connectivity capability of the Zunate 4G USB Network Adapter.

6.2 Security Settings

The Zunate adapter utilizes WPA/WPA2 encryption to secure your Wi-Fi network. The default password is provided on the device or packaging. It is recommended to change the default password for enhanced security if the device offers a web interface for configuration. Refer to the device's specific instructions for accessing advanced settings.



4G USB Portable WiFi

WPA/WPA2 WiFi encryption, multiple protection, more secure



Figure 5: The Zunate 4G USB Portable WiFi device, emphasizing its WPA/WPA2 WiFi encryption for secure internet access.

7. SPECIFICATIONS

Feature	Description
Model Number	Sxhlseller26khpa3ymr
Material	ABS
Color	White
Card Slot	Standard SIM Card
4G LTE Frequency Band	B1/B3/B5
3G UMTS Band	B1
Peak Download Rate	150 Mbps
Peak Upload Rate	50 Mbps
Wi-Fi Support	802.11 B/g/n
Max. Users	Up to 10
Hardware Interface	USB
Compatible Devices	Desktop, Laptop, Smart TV, Smartphone, Tablet
Dimensions	4.45 x 2.8 x 0.83 inches
Weight	1.41 ounces (0.04 kg)

8. TROUBLESHOOTING

- **No Internet Connection:**
 - Ensure the SIM card is correctly inserted and activated with a data plan.
 - Check if the device is properly powered via the USB port.
 - Verify that your location has 4G network coverage for the inserted SIM card.
 - Restart the device by unplugging and re-plugging it.
- **Cannot Connect to Wi-Fi:**
 - Confirm you are entering the correct Wi-Fi password (WPA/WPA2 key).
 - Ensure your device is within the Wi-Fi range of the adapter.
 - Check if the adapter has reached its maximum limit of 10 connected users.
- **Slow Internet Speed:**
 - Network congestion or weak 4G signal strength can affect speed. Try moving to a location with better signal.
 - Too many devices connected to the adapter can reduce individual speeds.
 - Check your SIM card's data plan for any speed limitations or data caps.

9. MAINTENANCE

- Clean the device with a soft, dry cloth. Do not use liquid cleaners.
- Store the device in a cool, dry place when not in use.

- Keep the USB connector free from dust and debris.

10. WARRANTY AND SUPPORT

For warranty information and technical support, please refer to the documentation provided with your purchase or contact Zunate customer service directly. Keep your proof of purchase for warranty claims. For further assistance, please visit the Zunate official website or contact their support channels.