



Manuals.plus /

- › plikc /
- › plikc Weekly Digital Thermostat Snow PRO User Manual

## plikc NEVE PRO

# plikc Weekly Digital Thermostat Snow PRO User Manual

## 1. PRODUCT OVERVIEW

---

The plikc Snow PRO is a weekly digital thermostat designed for precise temperature control in your home or office. This 2023 model features an intuitive interface, a large display, and multiple programming options to suit various scheduling needs. It operates on 2x1.5V AA batteries (not included) and offers advanced functions such as temperature calibration, adjustable thermal differential, and anti-freeze protection.



Figure 1.1: Front view of the plikc Snow PRO thermostat, displaying current and set temperatures, day, and time.

## Key Features:

- **Large LCD Display:** Clear and easy-to-read display for all settings and readings.
- **Multiple Programming Options:**
  - **24-Hour Option:** Program each day of the week individually.
  - **5+2 Option:** One schedule for weekdays (Mon-Fri) and another for weekends (Sat-Sun).
  - **7-Day Option:** A single schedule applied to all days of the week.
- **NO PROGRAM Mode:** Functions as a basic thermostat, allowing manual temperature setting without a schedule.
- **Precise Temperature Control:** Adjust temperature in 0.1°C steps.
- **Adjustable Thermal Differential:** Configurable from 0.2°C to 2°C.
- **Manual Probe Calibration:** Adjust temperature readings from -3°C to +3°C.
- **8 Daily Phases:** Fully programmable daily phases, with the ability to disable unnecessary ones.
- **Manual Modes:** Permanent manual, temporary manual, and hourly manual modes.
- **Anti-freeze Function:** Adjustable and can be disabled.
- **Keyboard Lock:** Partial and complete key lock functions.
- **Holiday Function:** Special mode for extended periods away.

## 2. SETUP AND INSTALLATION

---

### 2.1 Package Contents

Before installation, ensure all components are present:

- plikc Snow PRO Thermostat Unit
- Mounting Base
- Dowels and Screws for Wall Mounting
- Instruction Manual (this document)

### 2.2 Mounting the Thermostat

The thermostat can be mounted directly on a wall or over a standard electrical box. Always ensure the main power supply to the heating/cooling system is turned off before beginning installation.

1. **Separate the Base:** Gently detach the front thermostat unit from its mounting base. This usually involves loosening two small screws at the bottom and then lifting the unit.
2. **Position the Base:** Place the mounting base on the desired wall location. Ensure it is level. If mounting over an electrical box, align the holes.
3. **Mark and Drill:** Mark the screw holes on the wall. Drill appropriate holes for the dowels (if not using an electrical box).
4. **Secure the Base:** Insert dowels and secure the mounting base to the wall using the provided screws.
5. **Wiring:** Connect the heating/cooling system wires to the terminals on the mounting base. Refer to your heating/cooling system's manual for specific wiring diagrams. Ensure connections are secure.
6. **Attach Thermostat Unit:** Carefully align the thermostat unit with the mounting base. Ensure the pins connect correctly. Push the unit onto the base and secure it by tightening the screws at the bottom.



**Figure 2.1:** Rear view of the thermostat, illustrating the mounting plate and connection points for wiring.

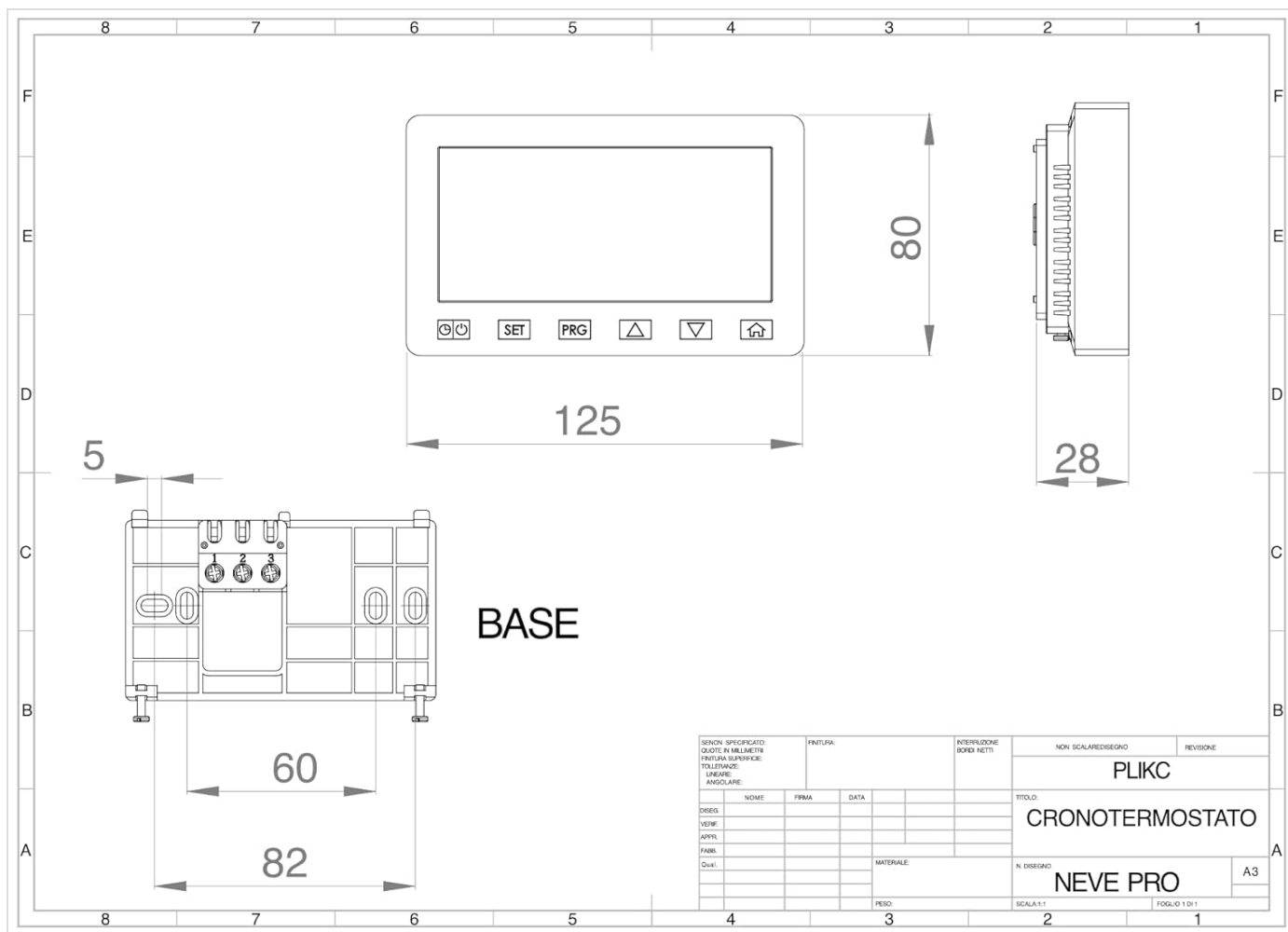


Figure 2.2: Dimensional drawing of the plikc Snow PRO thermostat, showing overall size and mounting base dimensions.

## 2.3 Battery Installation

The thermostat requires two 1.5V AA batteries (not included).

- Remove Thermostat Unit:** If already mounted, carefully detach the thermostat unit from its base by loosening the two bottom screws and lifting.
- Insert Batteries:** Locate the battery compartment on the back of the thermostat unit. Insert two AA batteries, ensuring correct polarity (+/-).
- Reattach Unit:** Reattach the thermostat unit to its mounting base and secure it with the screws.

*Note:* The thermostat retains programming settings for a short period during battery changes, but it is recommended to replace batteries quickly to avoid data loss.

## 3. OPERATING INSTRUCTIONS

### 3.1 Display Overview

The large LCD display shows essential information:

- **Current Day and Time:** Indicated at the top.
- **Measured Temperature:** The ambient temperature detected by the thermostat's sensor.
- **Set Temperature:** The desired temperature you have programmed.
- **Operating Mode Indicator:** Shows if the system is heating, cooling, or in another mode.
- **Program Phase:** Indicates the current daily programming phase.

- **Battery Indicator:** Alerts when batteries are low.

## 3.2 Basic Temperature Setting (NO PROGRAM Mode)

In NO PROGRAM mode, the thermostat functions as a simple manual thermostat.

1. **Activate NO PROGRAM Mode:** Navigate through the modes using the appropriate button (refer to the thermostat's on-screen prompts or specific button labels like 'MODE' or 'PRG' for cycling through options) until "NO PROGRAM" is displayed.
2. **Set Desired Temperature:** Use the Up/Down arrow buttons to adjust the target temperature. The thermostat will maintain this temperature until manually changed.
3. **Turn On/Off:** Use the designated power button to activate or deactivate the heating/cooling based on the set temperature.

## 3.3 Programming Options

The Snow PRO offers three main programming options for automated temperature control:

- **24-Hour Option:** Allows for unique programming for each day of the week. Ideal for varied weekly schedules.
- **5+2 Option:** Provides one schedule for Monday to Friday and a separate schedule for Saturday and Sunday. Suitable for consistent weekday routines.
- **7-Day Option:** Applies the same program to all seven days of the week. Best for consistent daily schedules.

To set a program:

1. **Enter Programming Mode:** Press the 'PRG' button (or similar) to enter the programming menu.
2. **Select Program Type:** Choose between 24-Hour, 5+2, or 7-Day programming using the navigation buttons.
3. **Set Daily Phases:** For each day (or group of days), set up to 8 daily phases. Each phase includes a start time and a target temperature. Use the Up/Down arrows to adjust values and 'SET' or 'PRG' to confirm and move to the next setting.
4. **Exit Programming Mode:** Save and exit the programming mode once all desired phases are set.

## 3.4 Manual Modes

In addition to NO PROGRAM mode, the thermostat offers three manual override modes:

- **Permanent Manual:** Overrides the current program indefinitely until manually cancelled.
- **Temporary Manual:** Overrides the current program for a specified duration (e.g., a few hours), after which the program resumes.
- **Hourly Manual:** Allows for a quick, temporary temperature adjustment for the current hour.

To activate a manual mode, press the 'MODE' or 'MANUAL' button and select the desired option, then set the temperature.

## 3.5 Advanced Settings

- **Temperature Calibration:** Access the calibration menu to adjust the displayed temperature from -3°C to +3°C if it does not match an external thermometer. This compensates for sensor placement.
- **Thermal Differential:** Adjust the hysteresis (temperature swing) from 0.2°C to 2°C. A smaller differential means more frequent on/off cycles, while a larger one means fewer cycles but wider temperature fluctuations.
- **Summer/Winter Function:** Select the operating season to optimize heating or cooling behavior.

- **Holiday Function:** Set a specific temperature for a defined period (e.g., during vacation) to save energy.
- **Anti-freeze Function:** This feature prevents temperatures from dropping below a set minimum (e.g., 5°C) to protect pipes from freezing. It can be adjusted or disabled.
- **Keyboard Lock:** Activate partial or complete keyboard lock to prevent unauthorized changes to settings.

## 4. MAINTENANCE

---

### 4.1 Battery Replacement

When the low battery indicator appears on the display, replace the batteries promptly to ensure continuous operation.

1. **Power Off:** Turn off the thermostat and, if possible, the main power to the heating/cooling system.
2. **Remove Unit:** Loosen the two screws at the bottom of the thermostat unit and carefully lift it off the mounting base.
3. **Replace Batteries:** Remove the old AA batteries from the compartment and insert two new 1.5V AA batteries, observing correct polarity.
4. **Reattach Unit:** Place the thermostat unit back onto the mounting base, ensuring proper alignment, and tighten the screws.
5. **Power On:** Restore power to the system and turn on the thermostat. Verify settings.

*Note:* The screws for detaching the unit are designed to remain in place even when fully loosened, preventing them from falling out during battery replacement.

### 4.2 Cleaning

To clean the thermostat, gently wipe the display and casing with a soft, dry cloth. Do not use abrasive cleaners, solvents, or spray liquids directly onto the unit, as this may damage the electronics or finish.

## 5. TROUBLESHOOTING

---

If you encounter issues with your plicc Snow PRO thermostat, refer to the following common problems and solutions:

Problem	Possible Cause	Solution
Display is blank or dim.	Low or dead batteries. Incorrect battery installation.	Replace with fresh AA batteries, ensuring correct polarity.
Thermostat not controlling heating/cooling.	Incorrect wiring. System power off. Thermostat in "OFF" mode. Program not active.	Check wiring connections. Ensure main power to HVAC system is on. Verify thermostat is in an active mode (e.g., "AUTO" or "ON"). Check program schedule.
Temperature reading seems inaccurate.	Sensor calibration needed. Thermostat exposed to drafts or direct sunlight.	Use the manual probe calibration function to adjust the reading. Relocate the thermostat if it's in an unsuitable environment.
Programming does not activate.	Thermostat in NO PROGRAM or manual override mode. Incorrect program settings.	Ensure the thermostat is in a programmed mode (24-Hour, 5+2, or 7-Day). Double-check program times and temperatures.
Display shows unusual characters (e.g., inverted 'N').	This is a known display characteristic for certain sub-options and not a defect.	This is normal behavior. Familiarity with the display will resolve any initial confusion.
Cannot change settings.	Keyboard lock is active.	Deactivate the keyboard lock function. Refer to the operating instructions for how to unlock the keyboard.

## 6. SPECIFICATIONS

---

Feature	Detail
Brand	plikc
Model Name	SNOW PRO
Model Number	NEVE PRO
Item Type Name	DIGITAL CHRONOTHERMOSTAT
Controller Type	Push Button
Special Features	Auto Changeover, Programmable
Color	White
Temperature Control Type	Manual, Programmable
Power Source	2 x AA batteries (not included)
Voltage	1.5 Volts
Display Type	LCD
Control Method	Button Control
Mounting Type	Wall Mount
Backlight	Yes
Item Weight	182 Grams
Dimensions	125 x 80 x 25 mm (approximate, based on technical drawing)
Included Components	Thermostat unit, mounting base, dowels, instruction manual
Shape	Rectangular

## 7. WARRANTY AND SUPPORT

---

### 7.1 Warranty Information

Specific warranty details for the plikc Snow PRO thermostat are not provided in this manual. Please refer to the warranty card included with your product or visit the official plikc website for comprehensive warranty terms and conditions.

### 7.2 Customer Support

For technical assistance, troubleshooting beyond this guide, or any product-related inquiries, please contact plikc customer support. Support is typically available via telephone or online chat. Refer to the product packaging or the official plikc website for the most current contact information.

