

manuals.plus /

› **PETLIBRO** /

› **PETLIBRO Interactive Cat Toy User Manual**

PETLIBRO PLIT002

PETLIBRO Interactive Cat Toy User Manual

Model: PLIT002

INTRODUCTION

Thank you for choosing the PETLIBRO Interactive Cat Toy. This smart, automatic toy is designed to engage your indoor cat's natural hunting instincts, providing hours of entertainment and promoting an active lifestyle. Featuring unpredictable movements, adjustable speeds, LED lights, and a rechargeable battery, this toy offers a stimulating play experience for your feline companion.



The PETLIBRO Interactive Cat Toy in Bisque, designed to resemble a small mouse with a glowing tail.

SAFETY INFORMATION

- This product is intended for pet use only. Keep out of reach of children.
- Inspect the toy regularly for damage. Discontinue use if any part is broken or detached to prevent choking hazards.
- Ensure the toy is used on appropriate surfaces. It is **not recommended for shag carpets or thick rugs** as this may impede movement and cause damage.
- Do not immerse the toy in water or expose it to excessive moisture.
- Use only the provided micro USB cable for charging. Do not use damaged cables or power adapters.
- The toy is constructed using durable and BPA-free materials (ABS, PVC, and TPU), making it safe for your feline friend.

PACKAGE CONTENTS

- PETLIBRO Interactive Cat Toy (Bisque)
- Micro USB Charging Cable

- User Manual (this document)

SETUP

Charging the Toy

The PETLIBRO Interactive Cat Toy features a built-in rechargeable Lithium Ion battery. For optimal performance and to prolong battery life, fully charge the toy before its first use.

1. Locate the micro USB charging port on the toy.
2. Connect the included micro USB cable to the toy and plug the other end into a USB power adapter (not included) or a computer's USB port.
3. The charging indicator light will illuminate (color may vary, refer to product for specific indication).
4. A full charge takes approximately 40 minutes and provides up to 240 minutes (4 hours) of play time across multiple cycles.
5. Once fully charged, disconnect the charging cable.



The toy is easily charged via a micro USB cable.

OPERATING INSTRUCTIONS

Turning On/Off and Speed Adjustment

1. To turn the toy **ON**, press and hold the toy's nose (power button) for 3 seconds. The tail's LED light will turn on, indicating it's ready for playtime.
2. To adjust the speed mode, press the toy's nose (power button) within five seconds of turning it on.
 - A **green light strip** indicates **slow mode**.
 - A **blue light strip** indicates **fast mode**.
3. To turn the toy **OFF**, press and hold the toy's nose (power button) for 3 seconds again.

Easy to use

Turn the toy on/off with a nose-press!
Hold for 3 seconds, and the tail's LED
turns on for playtime.



The toy is easily turned on/off and speed adjusted by pressing its nose.

Too colorful to ignore

Entices cats with alternating flashing lights



Adjustable speed modes for different cat preferences.

Automatic Play Cycles and Obstacle Avoidance

- The toy operates in cycles: 10 minutes of operation followed by an automatic 30-minute pause. It will then resume for another 10-minute session. This cycle repeats until a maximum running time of 240 minutes (4 hours) is reached.
- During the 30-minute pause, the toy can be restarted by touching it.
- Equipped with a smart built-in obstacle avoidance sensor, the toy moves in random directions and automatically changes course when it encounters a wall, furniture, or other obstacles. This maintains unpredictability and keeps your cat engaged.
- The two wheels are smooth and sturdy, enabling it to operate on various hard floor types, including marble, wood, and tile floors.



The toy's unpredictable movement captivates cats.

No more lost toys

Beeps to locate toy jams



Note: After the toy has been stuck for 10 minutes, it will emit a one-second beep every 10 seconds.

Smart obstacle avoidance ensures continuous play.

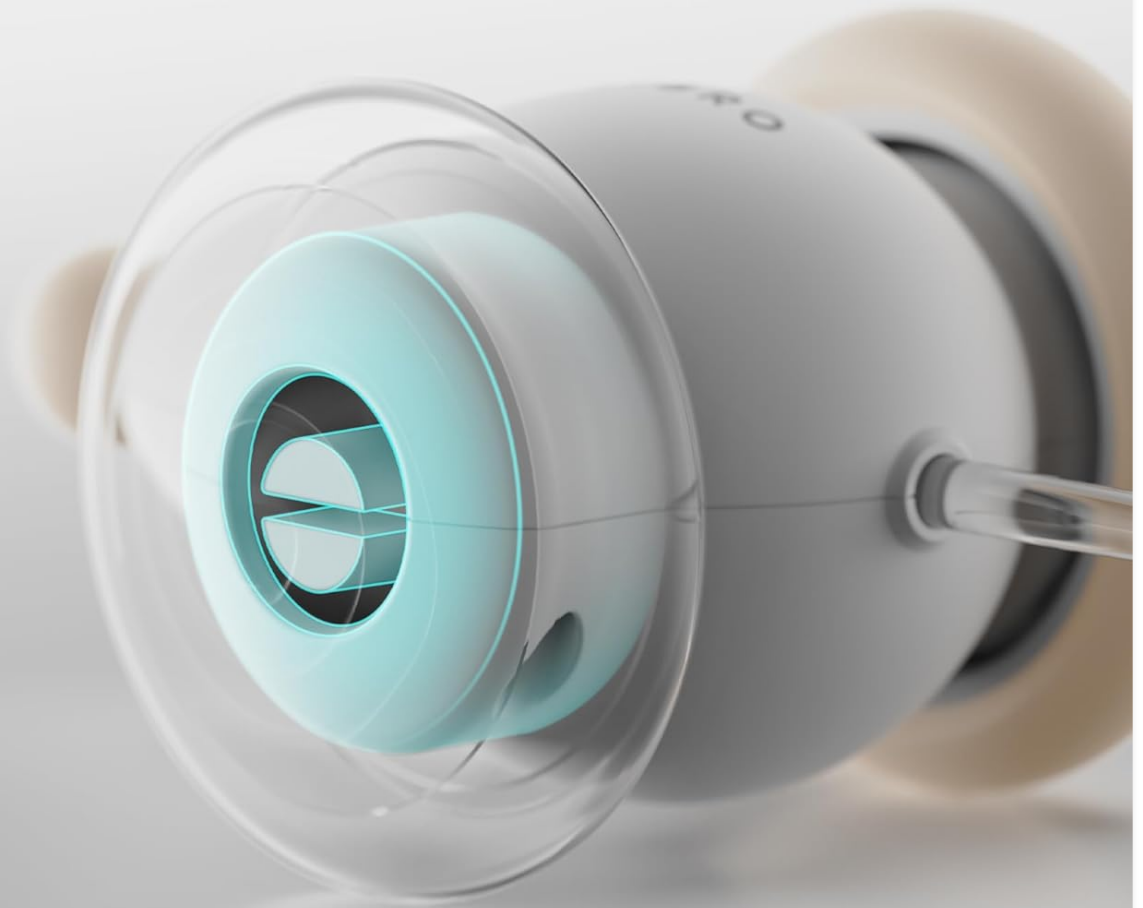
MAINTENANCE

Cleaning

- To clean the toy, wipe it with a soft, damp cloth. Do not use harsh chemicals or abrasive cleaners.
- Ensure the toy is completely dry before charging or storing.
- The wheels are removable for easy cleaning to prevent tangling from pet hair. Gently pull the wheels off, clean any accumulated hair or debris, and then reattach them securely.

Tangle-free rolling

Upgraded wheel design effectively reduces tangling



The upgraded wheel design reduces tangling and allows for easy cleaning.

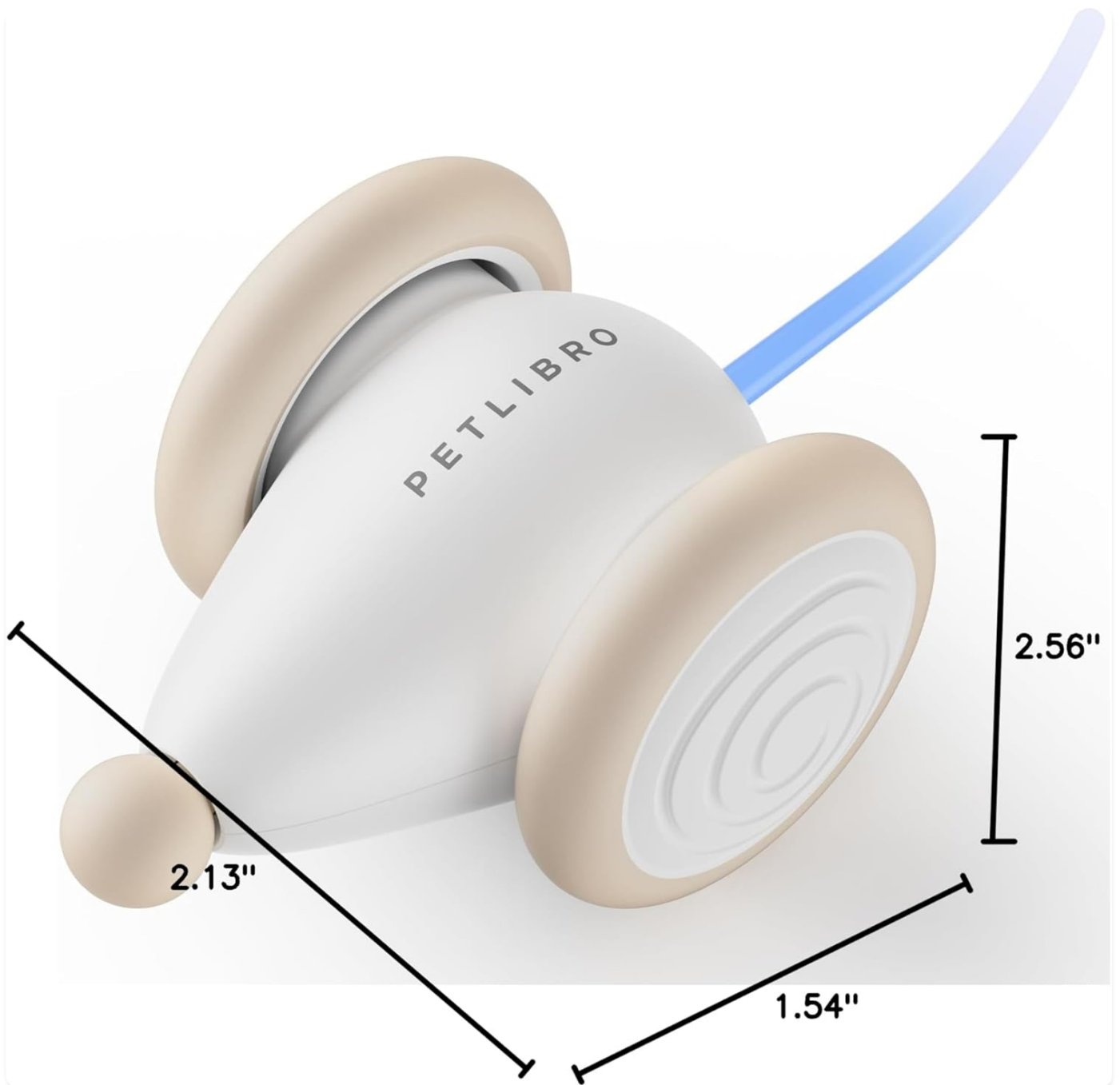
TROUBLESHOOTING

Problem	Possible Cause	Solution
Toy is not moving or is sluggish.	Low battery; wheels are tangled with hair/debris; toy is on an unsuitable surface (e.g., shag carpet).	Charge the toy fully. Remove wheels and clean any hair or debris. Move the toy to a hard, smooth surface.
Toy gets stuck frequently.	Excessive obstacles in play area; unsuitable surface.	Clear the play area of small obstacles. Ensure the toy is used on hard floors.
Toy emits a beep every 10 seconds.	Toy Jam Alert Sound activated. The toy has been stuck and immobile for 10 minutes.	Locate and retrieve the toy. Clear any obstruction or move it to a clear area.

Problem	Possible Cause	Solution
Toy does not turn on.	Battery is completely drained; power button not pressed correctly.	Charge the toy for at least 40 minutes. Press and hold the nose (power button) for 3 seconds.

SPECIFICATIONS

Feature	Detail
Model Number	PLIT002
Dimensions (LxWxH)	2.13 x 1.54 x 2.56 inches
Item Weight	2.92 ounces (0.08 Kilograms)
Battery Type	1 Lithium Ion battery (included)
Charging Time	Approx. 40 minutes
Play Time (per charge)	Up to 240 minutes (4 hours)
Materials	Acrylonitrile Butadiene Styrene (ABS), Polyvinyl Chloride (PVC), Thermoplastic Polyurethane (TPU)
Recommended Use	Indoor use for cats (All Life Stages)
Manufacturer	PETLIBRO



Product dimensions for reference.

WARRANTY AND SUPPORT

PETLIBRO offers a **2-year warranty** for this product, as well as a 30-day money-back guarantee. This cat toy is designed to encourage your beloved kitty to lead a more active and healthy lifestyle while meeting their mental, physical, and social interaction needs.

If you require any assistance, have questions, or need to claim warranty service, please do not hesitate to contact PETLIBRO customer service. Refer to the official PETLIBRO website or your purchase documentation for contact details. For a downloadable PDF version of the user manual, please visit: [PETLIBRO User Manual \(PDF\)](#)