

Gotrax Dolphin

Gotrax Dolphin 26" Electric Bike User Manual

Brand: Gotrax | Model: Dolphin

INTRODUCTION

The Gotrax Dolphin 26" Electric Bike is designed for urban commuting and leisure riding, offering a blend of power, comfort, and versatility. It features a 350W brushless motor with a peak power of 500W, providing a maximum speed of 20 MPH. The 280.8Wh removable battery allows for up to 15.5 miles in pure electric mode and over 30 miles with pedal-assist. Key features include 5 pedal-assist levels, a 7-speed Shimano gear system, front suspension, and dual disc brakes for enhanced safety and control.

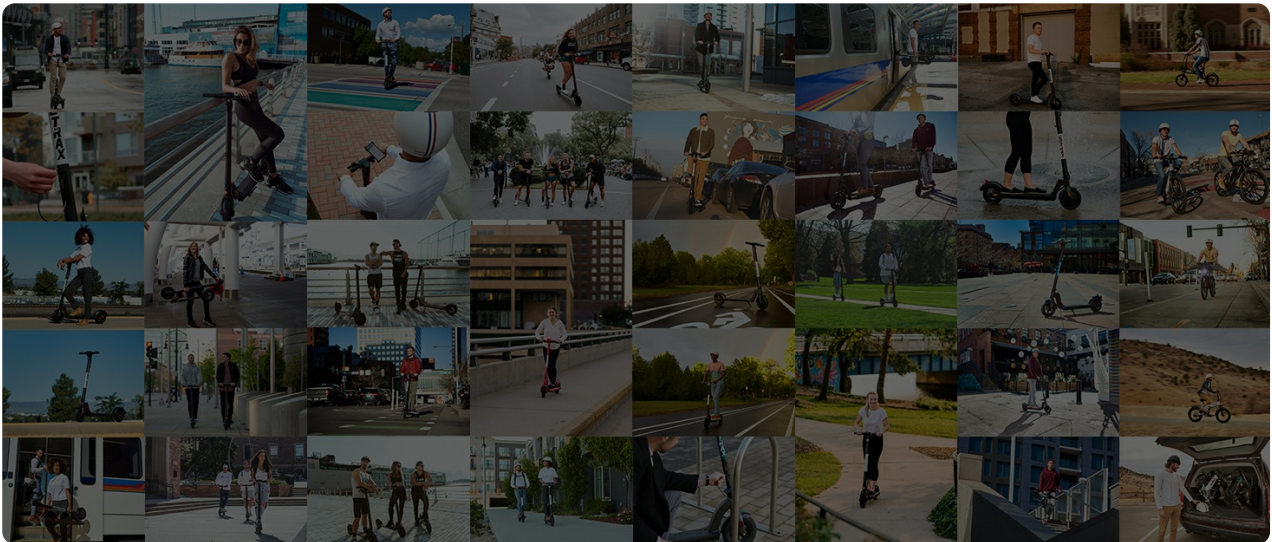


Figure 1: Gotrax Dolphin Electric Bike in action, highlighting its sleek design and urban usability.

SETUP

The Gotrax Dolphin electric bike is designed for easy assembly, with most of the work pre-done. Clear instructions and necessary tools are provided in the package.

Battery Installation and Removal

The bike features a removable battery for convenient charging. To remove the battery, insert the key into the lock, turn it, and press the release button. The battery will slide out. To reinstall, align the battery with the frame slot and push until it clicks into place. The key is only required for battery removal, not for operating the bike.



Boost Mode(3.7MPH)

Makes Uphill Pushing Easier.



Figure 2: Steps for easy battery installation and removal.

Adjusting Handlebars and Seat

The handlebars and seat are adjustable to ensure personalized comfort for riders of various heights. Adjust the seat height using the quick-release lever on the seat post. The handlebar angle can also be adjusted for an ergonomic riding posture.



Front Shock Absorbing Fork

Elevate Comfort, Redefine Your Journey.

Figure 3: Adjustable comfort seat for customized riding.



Aluminum Alloy Pedal

Improve Pedaling Comfort and Durability.

Figure 4: Easy-to-grasp adjustable handlebars for customized ride.

OPERATING THE ELECTRIC BIKE

Riding Modes

The Gotrax Dolphin offers three distinct riding modes:

- **Pure Electric Mode:** Utilizes the motor for propulsion without pedaling.
- **Pedal-Assist Mode (PAS):** Provides motor assistance while you pedal, with 5 adjustable levels of support.
- **Normal Bike Mode:** Ride the bike like a traditional bicycle without any electric assistance.

Control Panel and Pedal-Assist Levels

The control panel on the handlebar allows you to power the bike on/off, select pedal-assist levels (1-5), and activate the headlight (if installed). The panel features LED indicators for battery level and the current PAS mode.



GOTRAX

20 MPH
Max Speed

30 MILES
Pedal-Assist 1 Mode

15.5 MILES
Pure Electric Mode

5.5 HOURS
Fast Charge

! TIPS: Gear Defaults to 0 at Power-On.

Figure 5: Key performance metrics and riding modes.

Boost Mode

For an extra push, especially on inclines or when you need a quick burst of speed, activate the Boost Mode. Press and hold the designated button for 2-3 seconds to engage a 6 Km/h (3.7 mph) boost. This feature helps reduce riding fatigue and maximize distance.



Easy-to-Grasp

Customize Your Ride with Adjustable Handlebars.



Figure 6: Utilizing Boost Mode for easier uphill travel.

7-Speed Gear System

The Shimano 7-speed system allows you to adapt to various terrains and riding conditions. Selecting a lower gear minimizes strain on your legs, making it easier to pedal. The thumb shifter provides smooth and easy gear changes.



Peak 500W Brushless Motor

Provides a Fast and Smooth Riding Experience.



Figure 7: The 7-speed gear system for versatile riding.

MAINTENANCE

Regular maintenance ensures the longevity and optimal performance of your Gotrax Dolphin electric bike.

Battery Care

- Charge the 280.8Wh battery fully before first use.
- A full charge typically takes 5.5 hours with the provided 1.8A charger.
- Avoid completely draining the battery to prolong its lifespan.
- Store the battery in a cool, dry place when not in use.

General Maintenance

- Regularly check tire pressure (26" x 2.1" tires).
- Inspect dual disc brakes for proper function and wear.
- Keep the chain clean and lubricated.
- Ensure all bolts and fasteners are tightened securely.

- Clean the bike regularly with a damp cloth; avoid high-pressure washing.

TROUBLESHOOTING

If you encounter issues with your Gotrax Dolphin electric bike, consider the following common troubleshooting steps:

- **No Power:** Check if the battery is fully charged and properly seated in the frame. Ensure the power button on the control panel is pressed.
- **Motor Not Assisting:** Verify that you are in Pedal-Assist mode (PAS) and not in Normal Bike mode. Check the PAS level on the control panel.
- **Brake Issues:** Inspect the brake cables for tension and ensure the brake pads are not worn out. Adjust as needed.
- **Gear Shifting Problems:** Ensure the derailleur is properly aligned. Minor adjustments may be needed.
- **Unusual Noises:** Check for loose components, rubbing parts (e.g., brakes), or debris in the drivetrain.

For more detailed troubleshooting or persistent issues, please refer to the official user manual PDF or contact Gotrax customer support.

SPECIFICATIONS

Feature	Detail
Bike Type	City Bike, Electric Bike
Age Range (Description)	Youth, Adult
Brand	Gotrax
Number of Speeds	7
Color	White
Wheel Size	26 Inches
Frame Material	Aluminum
Suspension Type	Front Shock Absorbing Fork
Included Components	Reflectors
Size	26inch
Brake Style	Dual disc brake
Style	350w White
Model Name	Dolphin
Power Source	Rechargeable Battery
Wattage	350 watts
Wheel Material	Aluminum
Lithium Battery Energy Content	280.8 Watt Hours

Seat Material Type	Faux Leather
Warranty Type	365 Days
Maximum Weight Recommendation	264 Pounds
Assembly Required	Yes
Bicycle Gear Shifter Type	Trigger
Is Autographed	No
UPC	810132393587
Bicycle Drivetrain Type	Derailleur
Electric Assist Type	Pedelec, Throttle-on-demand
Manufacturer	ZHE JIANG TAOTAO VEHICLES CO.,LTD
Item Package Dimensions L x W x H	56 x 30 x 9 inches
Package Weight	28.58 Kilograms
Item Dimensions LxWxH	70.1 x 27.2 x 46.1 inches
Brand Name	Gotrax
Warranty Description	365 days
Material	Aluminum+ABS
Suggested Users	unisex-adult
ASIN	B0CG98MN9Z
Date First Available	August 22, 2023

WARRANTY AND SUPPORT

The Gotrax Dolphin Electric Bike comes with a **365-day part assurance**. For any problems or inquiries, please contact Gotrax customer support. You can also refer to the official [User Manual \(PDF\)](#) for detailed information.

SAFETY GUIDELINES

Your safety is our priority. The Gotrax Dolphin Electric Bike is **UL2849 safety certified**. Always wear a helmet and appropriate safety gear when riding. Adhere to local traffic laws and regulations. Perform regular safety checks on brakes, tires, and other components before each ride.



[GOTRAX Dolphin Electric Bike User Manual](#)

Comprehensive user manual for the GOTRAX Dolphin Electric Bike, covering assembly, operation, safety guidelines, and product specifications. Learn how to properly use and maintain your electric bicycle.

lang: **score:24** filesize: 2.01 M page_count: 64 document date: 2025-03-27