

## TECLAST M50

# TECLAST M50 Tablet User Manual

Model: M50

## 1. INTRODUCTION

---

The TECLAST M50 is a 10.1-inch Android 13 tablet designed for versatile use, from entertainment to productivity. It features an Octa-Core processor, 12GB RAM, 128GB internal storage expandable up to 1TB, and supports Dual SIM 4G LTE connectivity. This manual provides essential information for setting up, operating, maintaining, and troubleshooting your device.

## 2. WHAT'S IN THE BOX

---

Upon unboxing your TECLAST M50 tablet, please ensure all the following items are present:

- TECLAST M50 Tablet
- Power Adapter (Charger)
- USB Type-C Cable
- SIM Ejector Tool
- User Manual



Exprimez-vous. Protégez ce qui compte.  
Multitâche facilement.

## Android 14, tout dépend de vous



### Android 14

Conçue pour vous



### Barre des tâches

Multitâche pratique



### Confidentialité et sécurité

Gérer les autorisations



### Gérer les autorisations

Contrôler le temps d'écran

Image: Contents of the TECLAST M50 tablet box, showing the tablet, power adapter, USB cable, SIM ejector tool, and user manual.

### 3. PRODUCT OVERVIEW

---

The TECLAST M50 tablet features a sleek design with a 10.1-inch display and a lightweight build of approximately 460 grams. It measures 23L x 20l x 1Ép centimeters. Familiarize yourself with the tablet's physical components:



Image: TECLAST M50 tablet from various angles, illustrating the location of the power button, volume controls, USB-C port, 3.5mm headphone jack, and speaker grilles.

## Key Components:

- **Power Button:** Located on the side, used to power on/off or wake/sleep the device.
- **Volume Buttons:** Adjust the audio volume.
- **USB Type-C Port:** For charging and data transfer.
- **3.5mm Headphone Jack:** Connect wired headphones.
- **Speaker Grilles:** Four stereo speakers for enhanced audio output.
- **Front Camera:** 5MP camera for video calls and facial unlock.
- **Rear Camera:** 13MP camera for photos and videos.
- **SIM/MicroSD Card Slot:** Insert SIM cards for cellular connectivity and a MicroSD card for expanded storage.

## 4. SETUP

---

### 4.1 Initial Charging

Before first use, it is recommended to charge the TECLAST M50 tablet for at least 30 minutes. Connect the USB Type-C cable to the tablet's charging port and the power adapter to a wall outlet. The battery icon on the screen will indicate charging status.

### 4.2 Powering On/Off

- **To Power On:** Press and hold the Power button until the TECLAST logo appears.
- **To Power Off:** Press and hold the Power button until the power options menu appears, then select 'Power off'.
- **To Restart:** Press and hold the Power button, then select 'Restart'.

### 4.3 Inserting SIM and MicroSD Cards

The TECLAST M50 supports dual SIM cards for 4G LTE connectivity and a MicroSD card for storage expansion up to 1TB.

1. Locate the SIM/MicroSD card tray on the side of the tablet.
2. Insert the SIM ejector tool into the small hole next to the tray and press gently until the tray pops out.
3. Carefully place your Nano-SIM cards and/or MicroSD card into the designated slots on the tray. Ensure the gold contacts are facing down and the cards are correctly oriented.
4. Gently push the tray back into the tablet until it clicks into place.



Image: Illustration of inserting SIM cards and a MicroSD card into the tablet's tray.

### 4.4 Initial Android Setup

After powering on for the first time, follow the on-screen prompts to complete the initial setup process. This includes selecting your language, connecting to a Wi-Fi network, signing in with your Google account, and setting up security features like facial unlock.

## 5. OPERATING INSTRUCTIONS

---

### 5.1 Display Features

The TECLAST M50 features a 10.1-inch TDDI HD display with a resolution of 1280x800 pixels. The TDDI technology integrates touch sensors directly into the LCD, providing a more responsive touch experience. It also supports Widevine L1, allowing for high-definition streaming from platforms like Disney+ and Amazon Prime Video.

## Profitez de la vue panoramique

Le Teclast M50 est doté d'un grand écran Full HD de 10,1 pouces et la technologie IPS lui confère un angle de vision ultra large de 178°. Avec une résolution HD de 1280×800, il établit un équilibre entre clarté et consommation d'énergie. Associé à une proportion d'affichage divine 16:10 et à la technologie d'optimisation des couleurs T-Colour 2.0, il présente des couleurs plus vives et des détails plus riches tout en réduisant les émissions de lumière bleue.

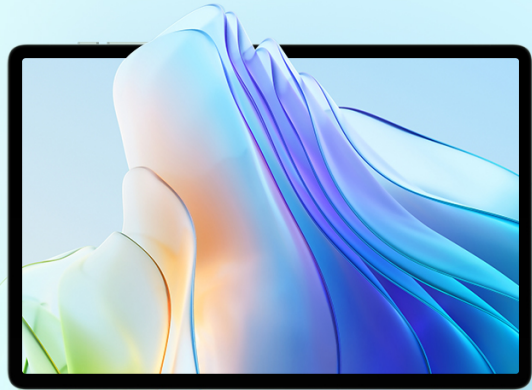
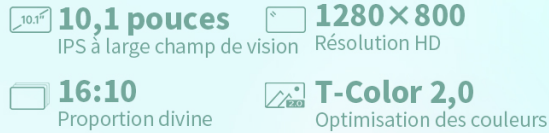


Image: Visual representation of the TECLAST M50's 10.1-inch HD display with 1280x800 resolution and IPS wide viewing angle.

## 5.2 Performance and Storage

Powered by an Octa-Core UNISOC T606 processor and Mali-G57 GPU, the M50 delivers efficient performance. It comes with 6GB of RAM, expandable to 12GB using virtual memory technology, and 128GB of internal storage. Storage can be further expanded up to 1TB via a MicroSD card.

## Exploitez votre potentiel

Précision, puissance, perfection : Unisoc T606.

L'Unisoc T606, comparé à l'ancien SC9863A, est doté d'un cœur A75 à haute performance. Associé au cœur A55 à haute efficacité, il offre une expérience d'utilisation de la tablette plus fluide.

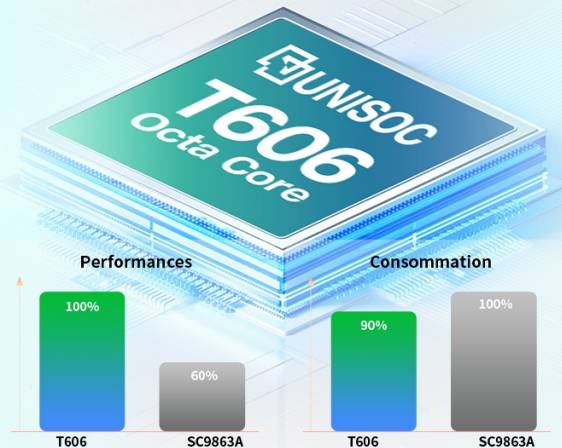
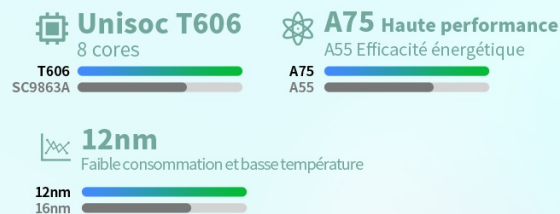


Image: Details of the UNISOC T606 Octa-Core processor and Mali-G57 graphics processor.

## Une nouvelle vague de puissance

Graphiques fidèles à la réalité : Mali-G57 Magic

Le GPU Mali-G57, comparé au GE8322, a non seulement doublé ses performances, mais il présente également une efficacité énergétique supérieure et des fonctions d'affichage plus complètes, ce qui rend les graphismes des jeux plus frais et plus réalistes.



Image: Information on RAM and ROM capacity, including expandable storage options.

## 5.3 Connectivity

Stay connected with the TECLAST M50's comprehensive connectivity options:

- **Dual SIM 4G LTE:** Supports TD-LTE and FDD-LTE networks for mobile data and VoLTE calls.
- **Dual-band Wi-Fi:** Connect to 2.4GHz and 5GHz Wi-Fi networks (802.11ac).
- **Bluetooth 5.0:** For connecting wireless accessories like headphones and keyboards.
- **GPS Navigation:** Supports GPS, BeiDou, GLONASS, and Galileo for accurate positioning.



Image: Overview of Wi-Fi, Bluetooth, and 4G LTE capabilities.



Image: Tablet showing GPS navigation in use.

## 5.4 Camera Functionality

The M50 is equipped with a 13MP rear camera and a 5MP front camera. The rear camera features AI-based auxiliary optimization for improved focus and image results, especially in low-light conditions. The 5MP front camera supports facial unlock for convenient device access.

## Capturez l'instant

Équipé d'un double appareil photo IA de 13 mégapixels à l'arrière, le Teclast M50 améliore intelligemment la vitesse de mise au point et optimise les résultats d'imagerie. Associé à une lumière supplémentaire, il offre de meilleurs résultats en cas de faible luminosité, ce qui vous permet de capturer facilement des moments brillants.

L'appareil photo avant est doté d'une caméra HD de 5 mégapixels. En plus des appels vidéo HD, elle prend également en charge les fonctions de déverrouillage facial, ce qui rend l'utilisation de la tablette plus pratique et sans effort.

**Auxiliaire basé sur l'IA**  
Algorithme optimisé

**Arrière 13MP**  
Double caméra IA

**Lumière du flash**  
Capture en faible lumière

**Avant 5MP**  
Déverrouillage par reconnaissance faciale



Image: Details of the tablet's front and rear cameras.

## 5.5 Audio System

Experience immersive sound with the M50's Momentum III audio system, featuring four stereo speakers and a Smart K amplifier for clear and rich audio output.

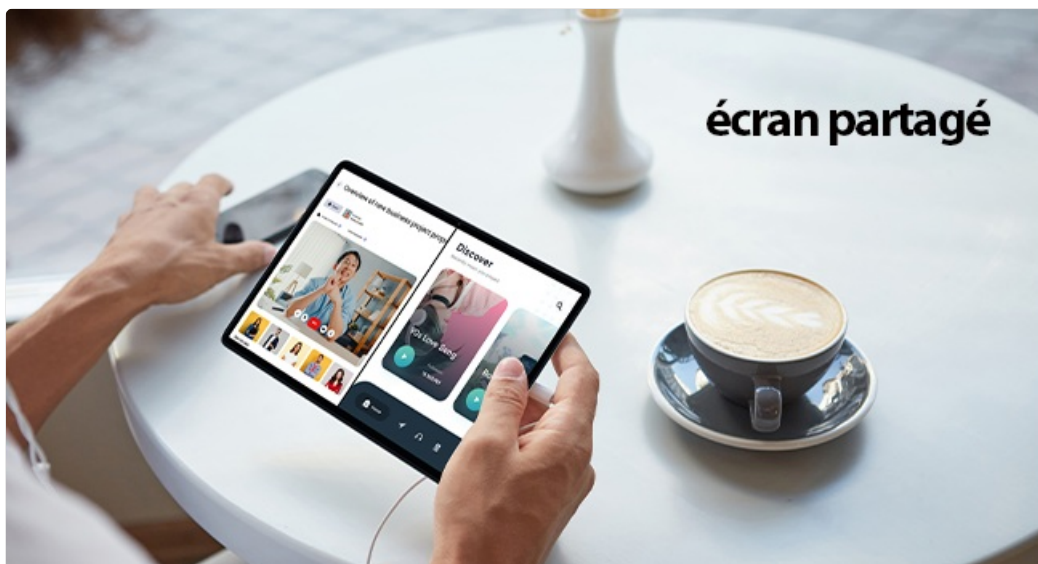


Image: Representation of the tablet's 4-speaker audio system.

## 5.6 Android 13 Features

The tablet runs on Android 13, offering enhanced privacy controls, a convenient taskbar for multitasking, and improved permission management. It also includes features for parental controls to manage screen time and application access.



## Espace exceptionnel, choix exceptionnel

**Stockez plus, Réfléchissez moins : Votre nouvelle règle**

Avec 6 Go de RAM LPDDR4X, une fonction d'extension de la mémoire virtuelle a été ajoutée, vous offrant une expérience fluide similaire à celle d'une mémoire vive de 14 Go. La puce de stockage haute vitesse de 128 Go, complétée par l'extension de la capacité de la carte Micro SD, garantit un stockage sans souci.

**Max 14 Go\***  
Extension 6 Go + 8 Go

**128GB**  
Stockage




**Micro-SD**  
Jusqu' à 1TB

Remarque: La capacité de 14 Go est atteinte lorsque la fonction d'extension de mémoire de 6 Go est activée.

Image: Android 13 interface showcasing privacy and multitasking features.

## Contrôle parental pour une vie tranquille

TECLAST s'attaque aux problèmes des parents, tels que le temps d'écran et le choix des applications, et a développé une nouvelle application pour aider nos enfants à trouver un équilibre entre l'apprentissage et le divertissement.

-  **Contrôle parental**  
Esprit tranquille
-  **Définition des tâches d'apprentissage**  
Organisation du temps de façon judicieuse
-  **Verrouillage des applications**  
Contrôler le temps d'écran

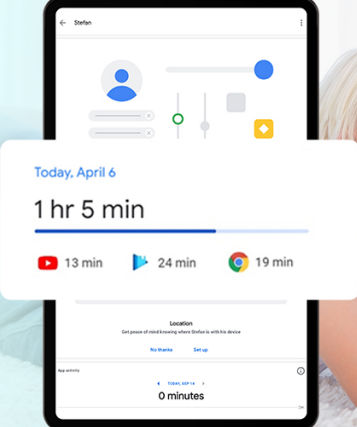


Image: Parental control interface for managing tablet usage.

## 6. MAINTENANCE

### 6.1 Battery Care

The TECLAST M50 is equipped with a 6000mAh battery, providing up to 15 hours of usage. To maximize battery life:

- Avoid extreme temperatures.
- Use the provided charger and cable.
- Avoid completely draining the battery frequently.
- For long-term storage, charge the tablet to about 50% and power it off.

# Représentation brillante

Pour chaque détail : clair et vibrant

La technologie tactile intégrée TDDI avancée, comparée à l'écran tactile traditionnel à processus G+G, a un taux d'échantillonnage tactile plus élevé de 120 Hz, et élimine également les interférences de signal, vous offrant une expérience tactile plus précise et plus sensible.

 **Intégration TDDI**  
Touche sensible

 **Incell entièrement laminé**  
Transmission élevée de la lumière

 **Max 120Hz**  
Taux d'échantillonnage tactile



Image: Battery capacity and charging method.

## 6.2 Cleaning

To clean your tablet, use a soft, lint-free cloth. For stubborn smudges, slightly dampen the cloth with water or a screen cleaner specifically designed for electronics. Avoid using harsh chemicals or abrasive materials.

## 6.3 Software Updates

Periodically check for system updates to ensure your tablet has the latest features and security patches. Navigate to **Settings > System > System update** to check for and install available updates.

## 7. TROUBLESHOOTING

If you encounter issues with your TECLAST M50 tablet, try the following basic troubleshooting steps:

- **Device not turning on:** Ensure the battery is charged. Connect the charger and wait a few minutes before attempting to power on again.
- **Screen frozen or unresponsive:** Press and hold the Power button for about 10-15 seconds to force a restart.
- **Wi-Fi/Bluetooth connectivity issues:** Try toggling Wi-Fi/Bluetooth off and on. Restart your tablet and/or your router/Bluetooth device.
- **Apps crashing:** Clear the cache and data for the problematic app (Settings > Apps > [App Name] > Storage > Clear cache/Clear data). If the issue persists, uninstall and reinstall the app.
- **Slow performance:** Close unnecessary background apps. Clear cached data. Consider performing a factory reset as a last resort (back up your data first).
- **SIM card not detected:** Ensure the SIM card is correctly inserted and activated with your carrier. Restart the tablet.

For more complex issues, refer to the official TECLAST support resources.

## 8. SPECIFICATIONS

Feature	Specification
Model Name	TECLAST M50
Operating System	Android 13
Processor	UNISOC T606 Octa-Core (1.6 GHz)
Graphics Processor	Mali-G57 MP1
RAM	12 GB (6GB physical + 6GB expansion)
Internal Storage	128 GB
Expandable Storage	MicroSD up to 1 TB
Screen Size	10.1 Inches
Display Resolution	1280x800 Pixels (TDDI, IPS)
Rear Camera	13 MP
Front Camera	5 MP
Battery Capacity	6000 mAh (22 Wh)
Battery Life (Average)	15 hours
Connectivity	4G LTE (Dual SIM), Wi-Fi (802.11ac), Bluetooth 5.0
Navigation	GPS, BeiDou, GLONASS, Galileo
Audio	4 Stereo Speakers (Momentum III)
Ports	1x USB Type-C, 1x 3.5mm Headphone Jack
Weight	460 Grams
Dimensions (L x W x H)	23 x 20 x 1 cm

## 9. WARRANTY AND SUPPORT

### 9.1 Warranty Information

The TECLAST M50 tablet comes with a manufacturer's warranty of **1 year** from the date of purchase. This warranty covers defects in materials and workmanship under normal use. Please retain your proof of purchase for warranty claims.

### 9.2 Customer Support

For any questions, technical assistance, or warranty inquiries, please contact TECLAST customer support. Our team provides professional advice and aims to respond to all inquiries within one working day. You can

find contact information on the official TECLAST website or through your retailer.

**Online Resources:** For additional support and FAQs, please visit the official TECLAST website: [TECLAST Brand Store](#)