

## boAt Aavante Bar 3600

# boAt Aavante Bar 3600/3500 Soundbar User Manual

Model: Aavante Bar 3600

Brand: boAt

## 1. INTRODUCTION

Welcome to the user manual for your new boAt Aavante Bar 3600/3500 5.1 Channel Bluetooth Soundbar. This manual provides essential information for setting up, operating, and maintaining your sound system to ensure optimal performance and longevity. Please read this manual thoroughly before using the product.

The boAt Aavante Bar 3600/3500 delivers an astonishing 500W RMS of boAt Signature Sound, providing a cinematic audio experience. Its 5.1 Channel Surround Sound setup creates an immersive audio environment, perfect for movies and gaming. The soundbar features versatile connectivity options including Bluetooth v5.3, HDMI (ARC), Optical, AUX, and USB, allowing seamless connection with various devices. You can tailor your audio experience with Entertainment EQ Modes and precise Bass and Treble controls.

# 500W

## boAt Signature Sound



Image: The boAt Aavante Bar 3600/3500 delivers 500W of boAt Signature Sound for a powerful audio experience.

## 2. WHAT'S IN THE BOX

Please check the contents of your package. If any items are missing or damaged, contact customer support immediately.

- Aavante Bar 3600 Soundbar
- Remote Control
- Aux Cable
- Screws for Wall Mount
- Power Cable
- User Manual
- Warranty Card

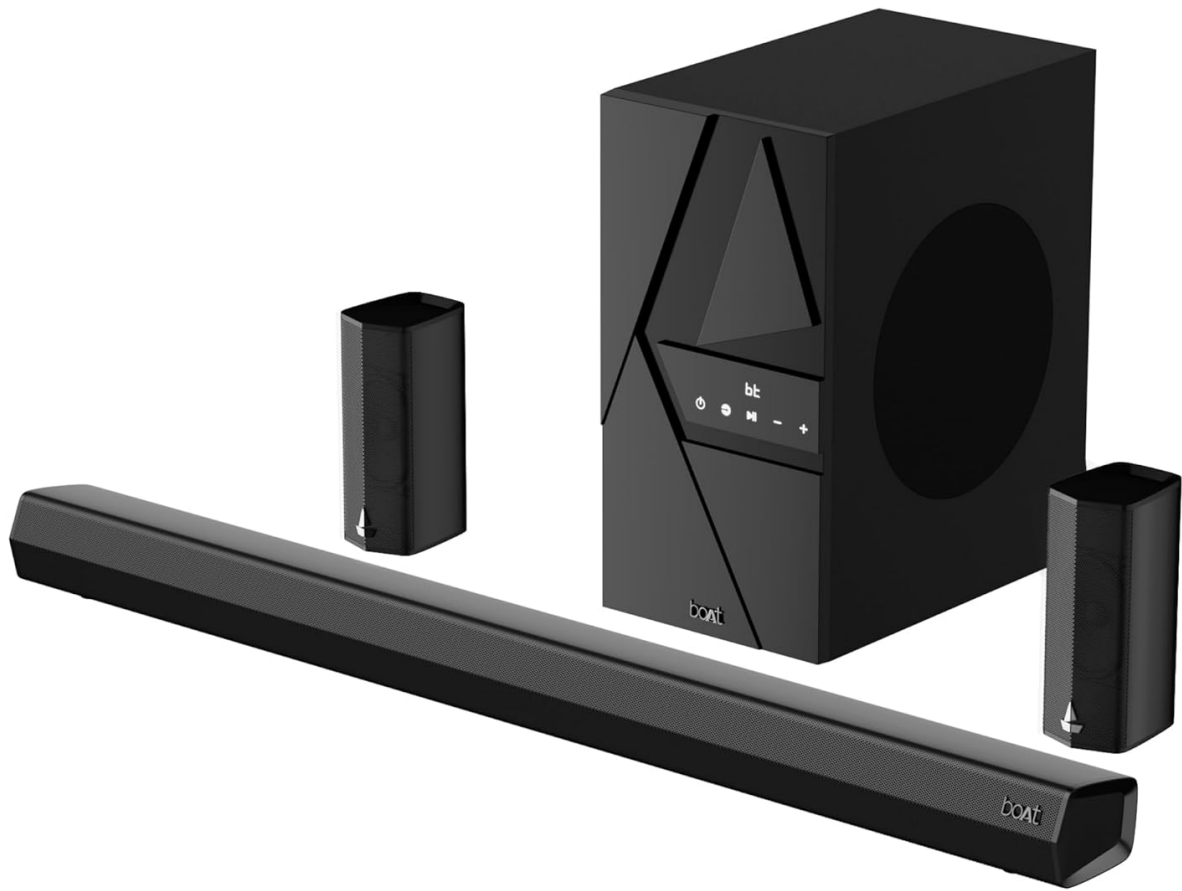


Image: The complete boAt Aavante Bar 3600 system, showcasing the soundbar, subwoofer, and two satellite speakers.

## 3. PRODUCT OVERVIEW

### 3.1 Components

- **Soundbar:** The main unit housing the front and center channels.
- **Subwoofer:** Provides deep bass frequencies for an immersive audio experience.
- **Satellite Speakers:** Two wired rear speakers for 5.1 channel surround sound.
- **Remote Control:** For convenient operation of all soundbar functions.

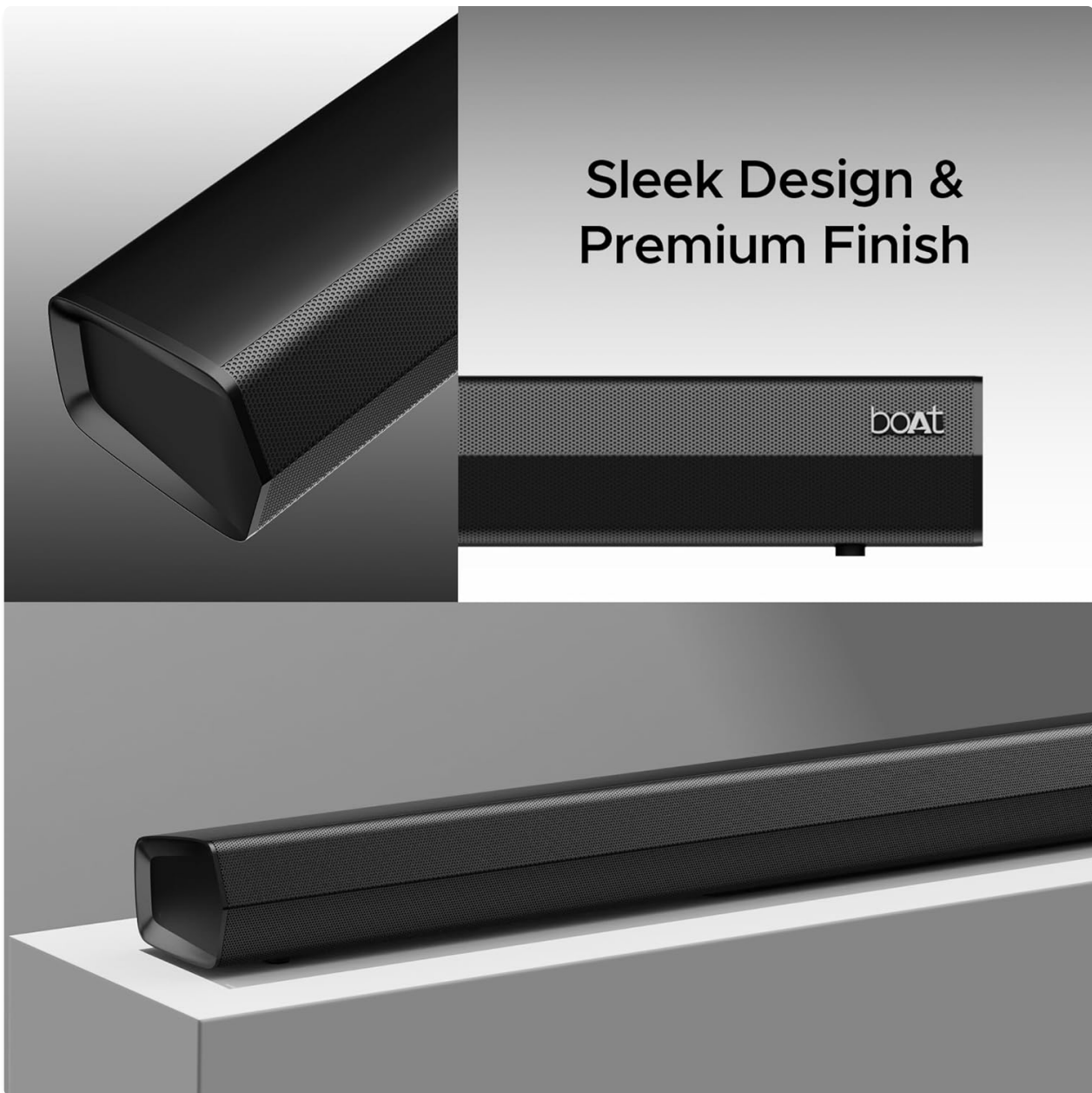


Image: The sleek design and premium finish of the boAt Aavante Bar soundbar.

## 3.2 Controls

The soundbar features intuitive controls on the unit itself and a comprehensive master remote control.

### Soundbar Controls:

- **Power Button:** Turns the soundbar on or off.
- **Input Button:** Cycles through input sources (Bluetooth, AUX, USB, Optical, HDMI ARC).
- **Volume Up/Down:** Adjusts the master volume.

### Remote Control:

The master remote control provides full functionality, including power, input selection, volume, EQ modes, and dedicated bass/treble adjustments.

# Master Remote Control

## For Customised Bass & Treble Controls



Image: The Master Remote Control for the boAt Aavante Bar, offering comprehensive control over audio settings.

## 4. SETUP

### 4.1 Physical Setup

**Soundbar Placement:** Place the soundbar centrally below your TV. Ensure there are no obstructions in front of the soundbar for optimal sound dispersion.

**Subwoofer Placement:** Position the subwoofer on the floor, preferably in a corner or near a wall, to enhance bass response. Avoid placing it directly against a wall to prevent muffled sound.

**Satellite Speaker Placement:** Place the two wired satellite speakers behind your listening position, one on the left and one on the right, for true 5.1 channel surround sound.

**Wall Mounting:** The soundbar is wall-mountable. Use the provided screws and follow the instructions in the separate wall-mounting template (if included) for secure installation.



# 5.1 Channel Surround Sound With Wired Subwoofer & Satellites



Image: The boAt Aavante Bar 3600 system configured for 5.1 Channel Surround Sound in a home theater setup.

## 4.2 Connections

Connect your devices to the soundbar using the appropriate cables and ports.

- **HDMI (ARC):** Connect an HDMI cable from the HDMI ARC port on the soundbar to the HDMI ARC port on your TV. This allows audio from your TV to play through the soundbar and enables TV remote control of the soundbar volume.
- **Optical:** Connect an optical cable from the OPTICAL port on the soundbar to the optical output on your TV or other audio source.
- **AUX:** Use a 3.5mm AUX cable to connect the AUX IN port on the soundbar to the audio output of your device (e.g., smartphone, tablet).
- **USB:** Insert a USB drive into the USB port to play audio files directly from the drive.
- **Bluetooth:** For wireless connection, enable Bluetooth on your device and select "Aavante Bar 3600" from the list of available devices. The soundbar will indicate successful pairing.

# Multi Compatibility

BT v5.3, Aux, USB, Optical & HDMI (ARC)



Image: Multi-compatibility options for the boAt Aavante Bar 3600, showing various input ports and their corresponding icons.

## 5. OPERATING INSTRUCTIONS

### 5.1 Power On/Off

Press the **Power** button on the soundbar or remote control to turn the unit on or off.

### 5.2 Input Source Selection

Press the **Input** button on the soundbar or remote control to cycle through the available input sources: Bluetooth, AUX, USB, Optical, and HDMI ARC. The soundbar's display will indicate the current input.

### 5.3 Volume Control

Use the **VOL+** and **VOL-** buttons on the soundbar or remote control to adjust the master volume level.

### 5.4 EQ Modes

The soundbar features multiple Equalizer (EQ) modes to optimize audio for different content types. Press the **EQ** button on the remote control to switch between modes:

- **Music:** Optimized for music playback, enhancing clarity and balance.

- **Movies:** Provides an immersive cinematic experience with enhanced dialogue and sound effects.
- **News:** Focuses on vocal clarity, making spoken content easier to understand.
- **3D:** Creates a wider, more spatial soundstage for an enhanced listening experience.



Image: The boAt Aavante Bar 3600 offers various EQ Modes, including Music, Movies, News, and 3D, to optimize your audio experience.

## 5.5 Bass and Treble Control

Use the dedicated **BASS+** / **BASS-** and **TREB+** / **TREB-** buttons on the remote control to fine-tune the bass and treble levels according to your preference.

## 6. MAINTENANCE

To ensure the longevity and optimal performance of your boAt Aavante Bar 3600/3500, follow these maintenance guidelines:

- **Cleaning:** Use a soft, dry cloth to wipe the surfaces of the soundbar, subwoofer, and satellite speakers. Do not use liquid cleaners, aerosols, or abrasive chemicals, as they may damage the finish.
- **Ventilation:** Ensure that the ventilation openings on the soundbar and subwoofer are not blocked.



Proper airflow prevents overheating.

- **Storage:** If storing the unit for an extended period, disconnect it from the power source and store it in a cool, dry place away from direct sunlight and extreme temperatures.
- **Avoid Liquids:** Keep the sound system away from water and other liquids. If liquid spills on the unit, immediately disconnect power and contact customer support.

## 7. TROUBLESHOOTING

If you encounter any issues with your soundbar, refer to the following common problems and solutions:

Problem	Possible Cause	Solution
No Power	Power cable not connected; Power outlet not active.	Ensure power cable is securely connected. Try a different power outlet.
No Sound	Incorrect input source; Volume too low; Mute activated; Incorrect cable connection.	Select the correct input source. Increase volume. Deactivate mute. Check all cable connections.
Bluetooth Not Connecting	Soundbar not in pairing mode; Device too far; Interference.	Ensure soundbar is in Bluetooth mode. Move device closer. Turn off other Bluetooth devices.
Remote Control Not Working	Batteries depleted; Obstruction between remote and soundbar.	Replace remote control batteries. Ensure clear line of sight to the soundbar's sensor.

If the problem persists after trying these solutions, please contact boAt customer support.

## 8. SPECIFICATIONS

Below are the key specifications for the boAt Aavante Bar 3600/3500 Soundbar:

- **Model Name:** Aavante Bar 3600
- **Speaker Type:** Soundbar
- **Special Feature:** Bluetooth
- **Recommended Uses:** For Smartphones or Tablets, For Televisions
- **Compatible Devices:** Smartphone, Tablet
- **Subwoofer Diameter:** 16.51 Centimetres
- **Controller Type:** Remote Control
- **Surround Sound Channel Configuration:** 5.1
- **Colour:** Premium Black
- **Product Dimensions:** 91D x 7W x 10H Centimeters
- **Item Weight:** 7780 Grams (7.78 kg)
- **Is Waterproof:** False
- **Control Method:** Remote
- **Wireless Communication Technology:** Bluetooth
- **Power Source:** Wired

- **Tweeter Diameter:** 1 Inches
- **Subwoofer Connectivity Technology:** Wireless
- **Connectivity Protocol:** Bluetooth
- **Number of USB 2 Ports:** 1
- **Specific Uses:** Home entertainment, movie watching, and music listening
- **Speaker amplification type:** Active
- **Wattage:** 500 Watts
- **Mounting Type:** Table & Wall

## 9. WARRANTY AND SUPPORT

Your boAt Aavante Bar 3600/3500 comes with a Limited Warranty. Please refer to the Warranty Card included in your package for detailed terms and conditions, including the warranty period and coverage.



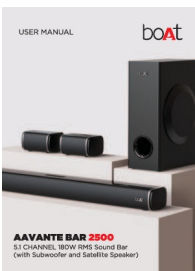
For technical support, service, or any inquiries regarding your product, please contact the manufacturer, Imagine Marketing Ltd. Contact details can typically be found on the Warranty Card or the official boAt website.




**Manufacturer:** Imagine Marketing Ltd

**Importer:** Imagine Marketing Limited Unit no. 204 & 205, 2nd floor, D-wing & E-wing, Corporate Avenue, Andheri Ghatkopar Link Road, Mumbai, Maharashtra-400093, India

© 2025 boAt. All rights reserved.

### Related Documents - Aavante Bar 3600

	<p><a href="#">boAt Aavante Bar Rhythm Soundbar User Manual</a></p> <p>User manual for the boAt Aavante Bar Rhythm 60W RMS 2.0 Channel Bluetooth Soundbar for TV, detailing setup, features, and operation.</p>
	<p><a href="#">boAt Aavante Bar 3200D 5.1 Channel Soundbar User Manual   Setup and Operation</a></p> <p>Comprehensive user manual for the boAt Aavante Bar 3200D 5.1 channel soundbar. Learn how to set up, connect, and operate your 350W RMS Dolby sound system with wired subwoofer and wireless rear speakers.</p>
	<p><a href="#">boAt Aavante Bar 2500 5.1 Channel Soundbar User Manual</a></p> <p>User manual for the boAt Aavante Bar 2500, a 5.1 channel 180W RMS soundbar with subwoofer and satellite speakers. Includes setup, operation, and technical specifications.</p>

 <p>USER MANUAL</p> <p>boAt</p> <p><b>AAVANTE BAR 5500DA</b> 5.1.2 CHANNEL, 500W Dolby Atmos Sound Bar with Wired Subwoofer &amp; Dual Wireless Rear Satellites</p>	<p><a href="#">boAt AAVANTE BAR 5500DA User Manual</a></p> <p>User manual for the boAt AAVANTE BAR 5500DA 5.1.2 Channel 500W Dolby Atmos Sound Bar with Wired Subwoofer &amp; Dual Wireless Rear Satellites. Includes setup, installation, operation, and technical specifications.</p>
 <p>USER MANUAL</p> <p>boAt</p> <p><b>AAVANTE BAR 2400</b> 5.1 CHANNEL, 180W RMS Sound Bar (with Subwoofer and Satellite Speakers)</p>	<p><a href="#">boAt Aavante Bar 2400 5.1 Channel Soundbar User Manual</a></p> <p>User manual for the boAt Aavante Bar 2400, a 5.1 channel 180W RMS soundbar with subwoofer and satellite speakers. Includes setup, operation, safety, and technical specifications.</p>
	<p><a href="#">boAt Aavante Bar 2000 Pro User Manual &amp; Setup Guide</a></p> <p>Comprehensive user manual for the boAt Aavante Bar 2000 Pro 200W RMS soundbar. Learn about setup, safety, features, remote control, wall mounting, and technical specifications.</p>