



Manuals.plus /

› SHAPELLX /

› SHAPELLX Fajas Colombianas Shapewear A1 Instruction Manual

SHAPELLX A1

SHAPELLX Fajas Colombianas Shapewear A1 Instruction Manual

Model: A1

1. PRODUCT OVERVIEW

The SHAPELLX Fajas Colombianas Shapewear is designed to provide tummy control, butt lifting, and overall body shaping for women. This bodysuit offers moderate compression through breathable, stretchable fabric, aiming to reduce waist and back bulges and enhance natural curves. It is suitable for various occasions, including postpartum recovery.



Figure 1: Front view of the SHAPELLX Fajas Colombianas Shapewear A1.

2. KEY FEATURES

- **Compression Technology:** Utilizes advanced compression technology with breathable fabric for uniform pressure and good stretchability, effectively reducing waist and back bulges.
- **Adjustable Shoulder Straps:** Features adjustable and detachable non-slip shoulder straps for a

customizable fit and gentle chest lifting.

- **Convenient Crotch Closure:** Equipped with a comfortable zipper crotch closure for easy restroom access without removing the entire bodysuit.
- **Butt Lifting Design:** The hip area is constructed with a single layer of fabric to lift and shape the buttocks, creating a natural peach buttock appearance.
- **Tummy Control:** Provides moderate compression in the midsection with a 3-layer mesh fabric on the tummy for enhanced control and a flatter abdomen.
- **Anti-Roll Lace:** High-elastic lace fabric on the legs ensures a snug fit and prevents rolling up.

MULTIFUNCTIONAL BODY SHAPER



Figure 2: Detachable and adjustable straps, along with the hook and zipper closure for double compression.

Wide Waistband

Underbust design to support your breast



3 Layer Fabric
To make firmly tummy control

Zipper Opening In The Crotch

Easy for bathroom use



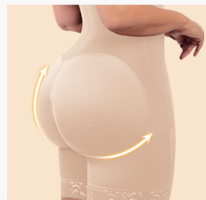
Figure 3: Details of the wide waistband, convenient crotch zipper, and three-layer tummy control fabric.

IT SUCKS YOU IN TIGHT

Effective in smoothing out the stomach and back.



Waist Slender



Tummy Control



Butt Lifter



Back Support

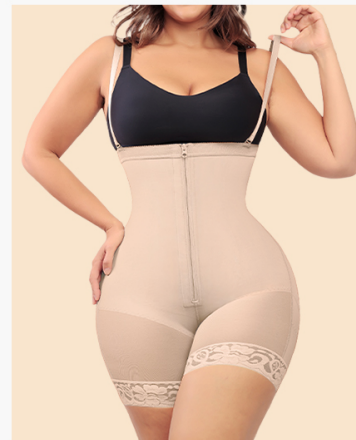


Figure 4: Visual representation of waist slenderizing, tummy control, butt lifting, and back support.


3. SIZE GUIDE

To ensure the best fit, it is highly recommended to measure your waist and hips accurately. Refer to the size chart below. If your measurements fall at the upper end of a size range, consider sizing up for a more comfortable fit.

Brand Size	US Size	Waist (in)	Hip (in)
XS	0-2	23.5 - 25.5	33 - 35.5
S	4-6	26 - 28	35.5 - 37.5
M	8-10	28.5 - 30	38 - 40
L	12-14	30.5 - 33	40.5 - 42.5
X-Large	14-16	33.5 - 35.5	43 - 44.5
XX-Large	16-18	36 - 37.5	45 - 47.5
3X-Large	18-20	38 - 40.5	48 - 49.5
4X-Large	20-22	41 - 42.5	50 - 51.5
5X-Large	22-24	43 - 44.5	52 - 54.5
6X-Large	24-26	45 - 48	55 - 57

SIZE CHART


SIZE	US	WAIST (IN)	HIPS (IN)
X-SMALL	0-2	23.5 - 25.5	33-35.5
SMALL	4-6	26-28	35.5-37.5
MEDIUM	8-10	28.5-30	38-40
LARGE	12-14	30.5-33	40.5-42.5
X-LARGE	14-16	33.5-35.5	43-44.5
2X-LARGE	16-18	36-37.5	45-47.5
3X-LARGE	18-20	38-40.5	48-49.5
4X-LARGE	20-22	41-42.5	50-51.5
5X-LARGE	22-24	43-44.5	52-54.5
6X-LARGE	24-26	45-48	55-57





Waist


Hips


***Shaper tip:**
Measuring the waist and hips is highly recommended for the best fit. If your waist and hip are at the upper of the size range, the waist might feel snug. Consider sizing up for a more comfy fit.

 Hand wash cold

 Use a mild detergent

 Not machine washable

 Do not wring

 Do not iron


 Line dry in the shade

Figure 5: Comprehensive size chart for SHAPELLX Shapewear.

4. HOW TO WEAR

Follow these steps for proper and comfortable wearing of your SHAPELLX Fajas Colombianas Shapewear:

1. Ensure your skin is dry and free of oils. Be careful with nails, jewelry, or pointed objects that could damage the fabric. Hold the garment with your fingertips.
2. Make sure all hooks, clasps, and zippers are open. From a seated position, take the bodysuit by the sides and pull one foot at a time into it. Pull the bodysuit up to your knees.
3. Stand up and spread your legs apart. Continue to pull the garment up to a comfortable fit around your thighs and hips.
4. Put on the straps and adjust them to your comfort. Use a mirror to check that the garment has not rolled up and is in its rightful position.
5. To close it, hook up the inner hooks from the bottom up and then close the zipper. If it's an open-bust

design, the shaper should be placed to surround your bra.

HOW TO WEAR IT

• Your body should be dry with no oils • Be careful with nails, jewelry & pointed objects • Hold the garment with your fingertips

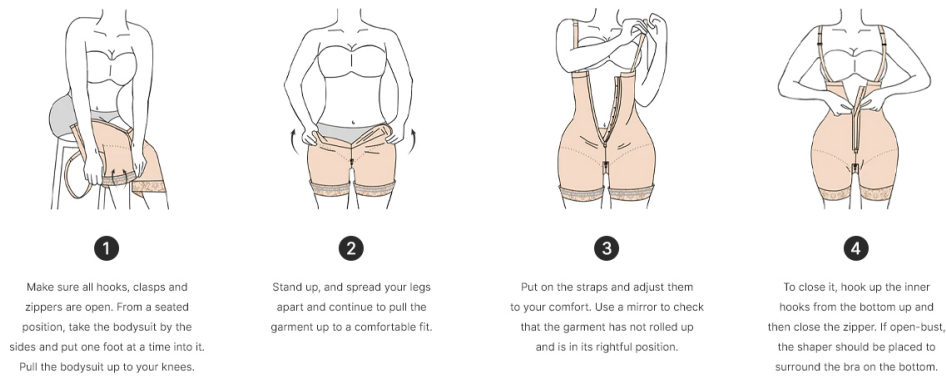


Figure 6: Step-by-step visual guide for wearing the shapewear.

5. CARE INSTRUCTIONS

Proper care will extend the life of your shapewear. Please follow these guidelines:

- **Hand Wash Only:** Wash by hand in cold water.
- **Use Mild Detergent:** Use a mild detergent to protect the fabric.
- **Do Not Wring:** Gently squeeze out excess water; do not wring or twist the garment.
- **Line Dry in Shade:** Hang to dry in the shade. Do not tumble dry.
- **Do Not Iron:** Ironing is not recommended as it can damage the fabric's elasticity.
- **Do Not Machine Wash:** Avoid machine washing to prevent damage to the delicate fabric and structure.

6. SPECIFICATIONS

- **Fabric Type:** 70% Nylon, 30% Spandex
- **Origin:** Imported
- **Department:** Women
- **ASIN:** B0CG67BBM2 (Parent ASIN) / B0CBR995BR (Current Product ASIN)
- **First Available Date:** August 21, 2023

7. TROUBLESHOOTING

If you encounter any issues with your SHAPELLX Fajas Colombianas Shapewear, consider the following:

- **Discomfort or Too Tight:** Review the size chart and your measurements. If you are at the upper end of a size range, a larger size might provide a more comfortable fit. Ensure the garment is pulled up evenly and not twisted.
- **Rolling Up/Down:** Ensure the garment is correctly positioned and smoothed out. The anti-slip silicone on the leg bands is designed to prevent rolling. If the waist rolls down, check if the garment is pulled high enough and if your bra is providing adequate support for open-bust styles.
- **Visible Lines Under Clothing:** Choose seamless outer garments. The design aims to be unnoticeable, but very thin or tight clothing might show lines.

- **Difficulty with Crotch Zipper:** Ensure the zipper is fully open before attempting to use it. If it feels stiff, ensure no fabric is caught.

8. WARRANTY AND SUPPORT

For any questions, concerns, or support regarding your SHAPELLX Fajas Colombianas Shapewear, please contact the manufacturer directly through their official channels or the retailer where the product was purchased. Keep your purchase receipt for reference.

Return Policy: This product typically has a 30-day return policy for refund or replacement, subject to the retailer's terms and conditions.