

XIAOMI L55M8-5XIN

Xiaomi X Pro Series 55-inch 4K Smart Google LED TV User Manual

Model: L55M8-5XIN

1. INTRODUCTION

This manual provides essential information for the safe and efficient operation of your Xiaomi X Pro Series 55-inch 4K Smart Google LED TV. Please read this manual thoroughly before using the product and retain it for future reference.

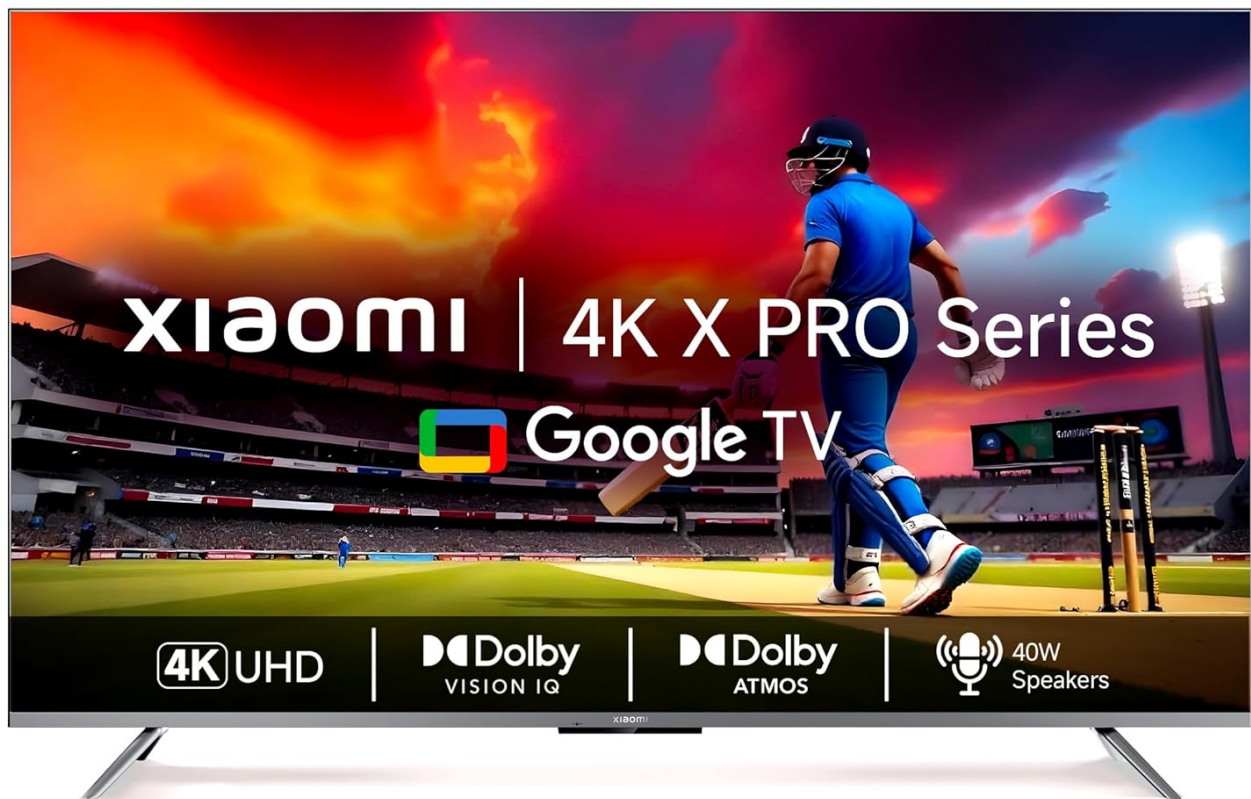


Figure 1.1: Front view of the Xiaomi X Pro Series 55-inch 4K Smart Google LED TV.

2. SAFETY INFORMATION

Always adhere to the following safety guidelines to prevent damage to the TV or personal injury:

- Do not expose the TV to rain or moisture.
- Ensure proper ventilation around the TV.
- Avoid placing the TV near heat sources or in direct sunlight.
- Use only the power cord supplied with the TV.
- Do not open the TV casing; refer all servicing to qualified personnel.
- Keep batteries out of reach of children.

3. SETUP

3.1 Unboxing and Package Contents

Carefully remove the TV and all accessories from the packaging. Verify that all components are present:

- 1 LED TV
- 2 Table Stand Base (along with screws)
- 1 Remote Control (2 AAA batteries included)

3.2 Physical Installation

Your TV supports both table-top and wall-mount installations. Choose the appropriate method for your environment.

Table Stand Installation:

1. Place the TV screen-down on a soft, flat surface to prevent scratches.
2. Attach the two table stand bases to the designated slots at the bottom of the TV.
3. Secure the bases with the provided screws.
4. Carefully lift the TV to its upright position on a stable surface.



Figure 3.1: TV installed on its table stand.

Wall Mount Installation:

For wall mounting, it is recommended to use a professional installation service. Ensure the wall mount bracket is compatible with the TV's VESA standards and can support the TV's weight.

3.3 Connecting Peripherals

The TV offers various connectivity options for external devices:

- **HDMI:** 3 HDMI ports (including HDMI 2.1 with eARC support) for high-definition audio and video devices like gaming consoles, Blu-ray players, or set-top boxes.
- **USB:** 2 USB 2.0 ports for connecting USB storage devices to play media.
- **Ethernet:** For wired network connection.
- **AV Input:** For connecting older devices using composite video and stereo audio cables.
- **Optical Port:** For digital audio output to soundbars or home theater systems.
- **3.5 mm Jack:** For connecting headphones or external speakers.
- **Bluetooth 5.1:** For wireless connection to compatible audio devices or accessories.
- **Dual Band Wi-Fi:** For wireless internet access.

Premium Metal Bezel-less Design



Figure 3.2: Overview of TV connectivity ports.

3.4 Initial Power On and Network Setup

1. Connect the power cord to the TV and a power outlet.
2. Press the power button on the TV or remote control to turn it on.
3. Follow the on-screen instructions to complete the initial setup, including language selection, network connection (Wi-Fi or Ethernet), and Google account login.

4. OPERATING THE TV

4.1 Remote Control Functions

The included Bluetooth remote control provides convenient access to all TV features:

- **Quick Wake:** Turn on the TV in less than 5 seconds.
- **Quick Settings:** Long press the Mi button to access quick settings.

- **Quick Mute:** Double tap the volume down button to mute audio.
- Dedicated buttons for Netflix, Amazon Prime Video, Disney+ Hotstar, and YouTube.
- Integrated Google Assistant for voice commands.



Figure 4.1: Remote control features.

4.2 Google TV Features

Your Xiaomi Smart TV runs on Google TV, offering a personalized and integrated entertainment experience:

- **Content First UI:** Organizes movies, shows, and live TV from across your apps and subscriptions.
- **Recommendations:** Personalized content suggestions based on your viewing habits.
- **Google Assistant:** Use voice commands for hands-free control, search, and smart home integration.
- **Chromecast built-in:** Cast content directly from your smartphone or tablet to the TV.
- **Watchlist:** Create a list of movies and shows you want to watch.
- **Ambient Mode:** Display photos or useful information when the TV is idle.
- **Kids Profile:** Create a safe viewing environment for children.

- **Personal Profiles:** Customize settings and recommendations for each user.
- **Far Field Microphone:** Control your TV and Google Assistant from a distance without the remote.
- **ALLM (Auto Low Latency Mode):** Optimizes display settings for gaming to reduce input lag.

Entertainment you love.
With a little help from **Google**



Content
First UI



Recommendations



Google
Assistant



Chromecast
Built-in



Watchlist



Ambient
Mode



Kids
Profile



Personal
Profiles

Figure 4.2: Google TV interface and features.



Say Goodbye to Waiting

99% of new TV installations are completed within **3 hours** of your appointment.



Need assistance? We're just a call away!

We're just a call away! Enjoy a call back from our team within **60 minutes** for any service request.



Swift solutions at your doorstep!

Our experts arrive at your home within **24 hours** of your service request, **99%** of the time.

Figure 4.3: Using the Far-field Mic with Google Assistant.

4.3 PatchWall

PatchWall is Xiaomi's content aggregation platform, providing a curated viewing experience with IMDb integration for smarter content curation.



Remote



Quick Wake

Turn on the TV in less than 5 sec



Quick Settings

Long press the Mi button to enter quick settings menu



Quick Mute

Double tap volume down button to Mute

Figure 4.4: PatchWall interface.

4.4 Display and Audio Features

The TV incorporates advanced technologies for an enhanced viewing and listening experience:

- **4K Dolby Vision IQ:** Delivers ultra-vivid picture quality with optimized brightness based on ambient light.
- **HDR10+, HDR 10, HLG:** Support for various High Dynamic Range formats for improved contrast and color.
- **Reality Flow MEMC:** Motion Estimation, Motion Compensation for smoother motion in fast-paced scenes.
- **Vivid Picture Engine 2 with Adaptive Brightness:** Proprietary technology for improved colors, contrast, saturation, and brightness.
- **Wide Colour Gamut (DCI-P3 94% typ):** Reproduces a billion true colors for lifelike images.
- **40 Watts Output Speakers:** Powerful audio output.
- **Dolby Atmos & DTS-X:** Immersive surround sound experience.

Ports

HDMI 2.1 x 3

USB 2.0 x 2

Ethernet

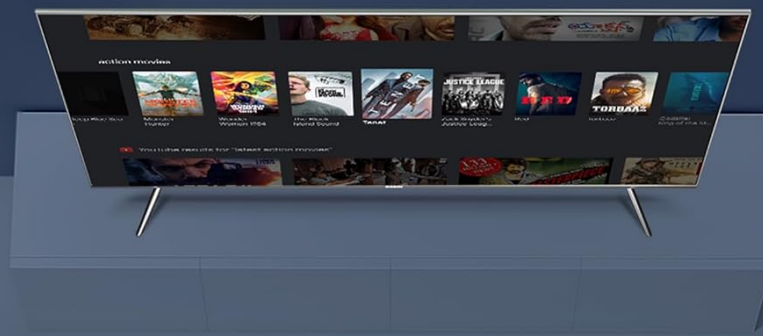
AV Input

Optical Port

Headphone Jack



Figure 4.5: Vivid Picture Engine 2 in action.



Far-field Mic with Google Assistant

Talk to your TV to open any app, start playing your favourite content, or command it to engage Xiaomi smart IoT products, with just your voice.

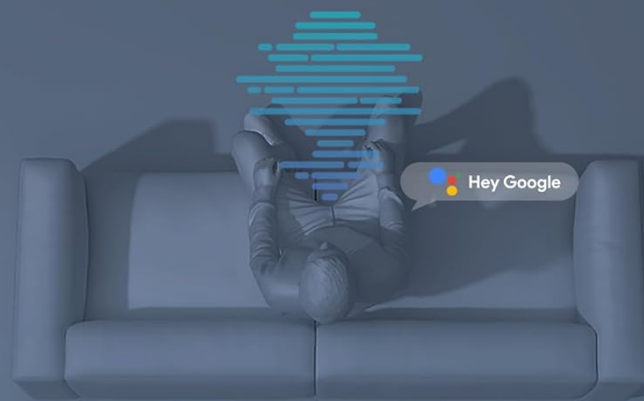


Figure 4.6: Dolby Vision IQ and HDR support.



Figure 4.7: Wide Color Gamut display.

5. MAINTENANCE

5.1 Cleaning the TV

- Always unplug the TV before cleaning.
- Use a soft, dry cloth to wipe the screen and cabinet.
- For stubborn marks, lightly dampen the cloth with water or a mild, non-abrasive screen cleaner.
- Never spray cleaner directly onto the screen.

5.2 Software Updates

Your Google TV will periodically receive software updates to improve performance and add new features. Ensure your TV is connected to the internet to receive these updates automatically or check for them manually in the settings menu.

6. TROUBLESHOOTING

If you encounter issues with your TV, refer to the following common solutions:

- **No Power:** Check if the power cord is securely connected and the power outlet is functioning.
- **No Picture/Sound:** Verify that the correct input source is selected. Check all cable connections (HDMI, AV).
- **Remote Control Not Responding:** Ensure batteries are correctly inserted and not depleted. Re-pair the Bluetooth remote if necessary.
- **Network Connection Issues:** Check your Wi-Fi router or Ethernet cable. Try restarting your router and the TV.
- **Picture Quality Issues:** Adjust picture settings (brightness, contrast, color) in the TV menu. Ensure the content source is high quality.

For persistent issues, please contact Xiaomi customer support.

7. SPECIFICATIONS

Feature	Specification
Model	L55M8-5XIN
Screen Size	55 Inches (138 cm)
Resolution	4K Ultra HD (3840 x 2160)
Refresh Rate	60 Hertz
Viewing Angle	178 Degrees
Display Type	HDR10+ HDR 10 HLG
Image Contrast Ratio	5500:1
Audio Output Power	40 Watts
Audio Encoding	DTS, Dolby Atmos
Speaker Configuration	Dolby Atmos DTS X
HDMI Ports	3 (HDMI 2.1, eARC compatible)
USB Ports	2 (USB 2.0)
Connectivity	Dual Band Wi-Fi, Bluetooth 5.1, Ethernet, AV, Optical, 3.5 mm Jack
Operating System	Google TV
RAM Memory	2 GB
Internal Storage	16 GB
Graphics Coprocessor	Mali G52 MP2

Feature	Specification
Power Consumption (On-mode)	160 Watts
Product Dimensions (LxWxH)	122.97 x 26.28 x 76.57 cm
Item Weight	13.69 kg (with stand)

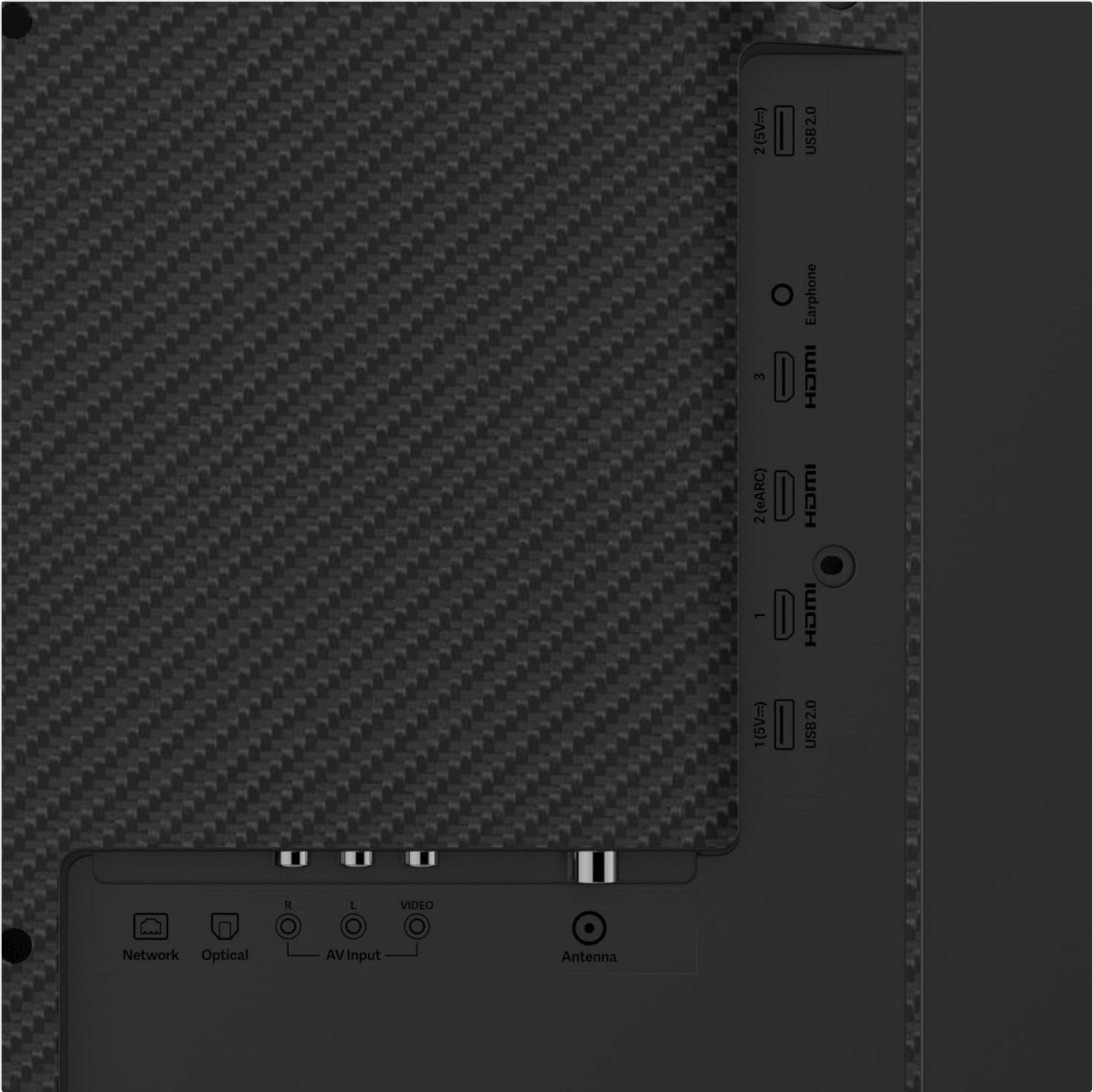


Figure 7.1: Product dimensions and weight.

8. WARRANTY AND SUPPORT

8.1 Warranty Information

Your Xiaomi TV comes with a **2-year warranty**, which includes:

- 1st Year Comprehensive Warranty.

- 1 Additional Year of Free Warranty on the Display Panel.

Please note that any physical damages to the unit are not covered under warranty. The brand warranty can be availed using your Amazon invoice.

8.2 Customer Service and Installation

Xiaomi is committed to providing reliable after-sales service:

- **Quick Installations:** 99% of new TV installations are completed within 3 hours of your appointment.
- **Assistance:** Enjoy a call back from our team within 60 minutes for any service request.
- **Doorstep Solutions:** Experts arrive at your home within 24 hours of your service request, 99% of the time.



Figure 8.1: Xiaomi service commitments.

For any assistance, reach us on our dedicated helpline at **1800 103 6286**, available from 9 AM to 9 PM.

8.3 Service Hygiene Measures

Xiaomi technicians follow strict hygiene protocols during service visits:

- Hygiene service with safety measures.
- Regular temperature monitoring of engineers.
- Wearing mask, gloves & shoe cover.
- Avoiding handshakes and practicing Namaste.
- Sanitizing tools before service.
- Maintaining minimum distance at all times.
- Contactless payment and digital payment availability.
- Expert engineers trained for zero contact service.



Figure 8.2: Xiaomi service hygiene protocols.



	<p>Xiaomi TV S Mini LED 55" User Manual and Setup Guide</p> <p>Comprehensive user manual and setup guide for the Xiaomi TV S Mini LED 55-inch television, covering installation, safety precautions, specifications, and connectivity options.</p>
	<p>Redmi TV Safety Notice and Installation Guide Model L55M6-RA</p> <p>Comprehensive guide for Redmi TV (Model L55M6-RA) covering safety precautions, installation steps (tabletop and wall-mount), TV interface details, remote control usage, technical specifications, and warranty policy from Xiaomi.</p>
	<p>Xiaomi Mi TV P1 Series User Manual and Specifications</p> <p>Comprehensive user manual for the Xiaomi Mi TV P1 series (L43M6-6ARG, L50M6-6ARG, L55M6-6ARG), covering setup, remote control functions, safety precautions, usage guidelines, cleaning, and technical specifications. Includes information on connectivity, Dolby and DTS audio, Google Assistant, and Chromecast compatibility.</p>
	<p>Xiaomi MDZ-27-AA M24A TV Stick User Guide</p> <p>Comprehensive user guide for the Xiaomi MDZ-27-AA M24A TV Stick and its Bluetooth Voice Remote (XMRM-M2), covering setup, installation, product information, compliance details, terms, and related resources.</p>
	<p>Xiaomi LED TV Safety Notice and Installation Guide</p> <p>Comprehensive safety notice and installation guide for Xiaomi LED TVs, covering unboxing, setup, remote control usage, specifications, important precautions, and e-waste disposal.</p>
	<p>Xiaomi L55MA-SPLEU TV User Manual and Safety Guide</p> <p>Comprehensive user manual and safety guide for the Xiaomi L55MA-SPLEU television, covering installation, usage, safety precautions, and technical specifications.</p>