

Mecity T-68A

Mecity 2 Slice Smart Toaster Instruction Manual

Model: T-68A | Brand: Mecity

1. IMPORTANT SAFETY INSTRUCTIONS

Please read and save these instructions before using your Mecity Smart Toaster. Basic safety precautions should always be followed to reduce the risk of fire, electric shock, and injury to persons, including the following:

- Do not touch hot surfaces. Use handles or knobs.
- To protect against electrical shock, do not immerse cord, plug, or toaster in water or other liquid.
- Close supervision is necessary when any appliance is used by or near children.
- Unplug from outlet when not in use and before cleaning. Allow to cool before putting on or taking off parts.
- Do not operate any appliance with a damaged cord or plug, or after the appliance malfunctions or has been damaged in any manner.
- Do not use outdoors.
- Do not let cord hang over edge of table or counter, or touch hot surfaces.
- Do not place on or near a hot gas or electric burner, or in a heated oven.
- Do not insert oversized foods, metal foil packages, or utensils into the toaster as they may involve a risk of fire or electric shock.
- A fire may occur if toasters are covered or touching flammable material, including curtains, draperies, walls, and the like, when in operation.
- Do not attempt to dislodge food when toaster is plugged in.
- Do not use the toaster for other than intended use.

2. PRODUCT OVERVIEW

The Mecity 2 Slice Smart Toaster features a modern design with a large touch screen for intuitive control. It

offers versatile toasting options for various bread types and browning preferences.

Key Features:

- **Contemporary Design:** Equipped with a 4.4-inch touch screen display for clear information and easy setting selection.
- **Versatile Toasting:** Select from 6 different browning levels and various bread types including Bagel, Muffin, Waffle, Gluten Free, White, and Grain breads.
- **Even Toasting:** Engineered with adjusted structure and heating wires to ensure consistent and even toasting results every time.
- **Durable Construction:** Crafted from a combination of mirror surface and brushed stainless steel for a shiny appearance and long-lasting durability.
- **Easy To Clean:** Features non-stick, food-grade stainless steel toasting slots and a convenient removable crumb tray for effortless cleaning.

Components:

Familiarize yourself with the main components of your toaster:

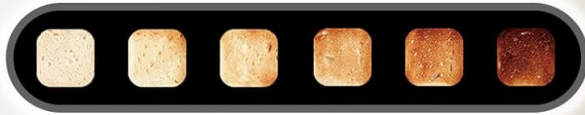
- Toasting Slots (2 wide slots)
- Control Panel (4.4-inch touch screen)
- Toast Lever
- Removable Crumb Tray
- Cord Storage (underneath the unit)



Image: Front view of the Mecity 2 Slice Smart Toaster with two slices of toast.

REAL TOUCH CONTROL

6 Browning Levels



6 Bread Types



Extra Functions

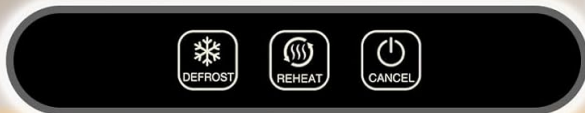


Image: Close-up of the toaster's touch control panel showing 6 browning levels, 6 bread types, and extra functions like Defrost, Reheat, and Cancel.

3. SETUP

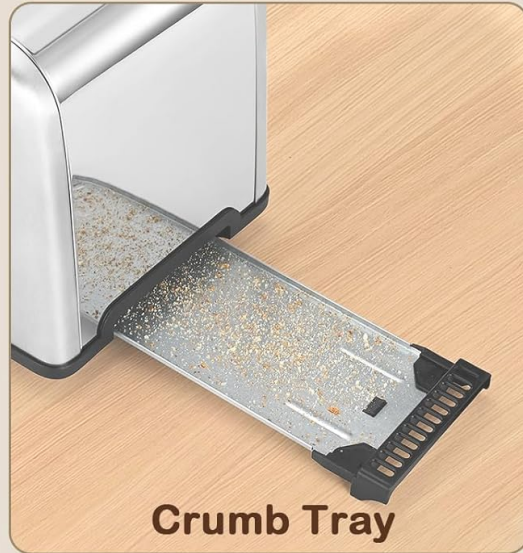
1. **Unpack:** Carefully remove the toaster and all packaging materials.
2. **Placement:** Place the toaster on a stable, flat, heat-resistant surface, away from flammable materials like curtains or walls. Ensure adequate ventilation around the unit.
3. **Power Connection:** Unwind the power cord from the cord storage area underneath the toaster and plug it into a standard 120V AC electrical outlet.
4. **First Use (Burn-off Cycle):** Before toasting food for the first time, operate the toaster without bread for a few minutes on the highest browning setting (Level 6). This will burn off any manufacturing residues and eliminate odors. A slight odor or smoke is normal during this initial use.



**Recommended bread
thickness ≥ 0.5 inch**



**Wide Slot & Shelf
Centering Rack**



Crumb Tray



Cord storage

Image: Top-down view of the toaster slots showing wide slots and centering racks, a pull-out crumb tray, and the cord storage area on the bottom of the unit.

4. OPERATING INSTRUCTIONS

Your Mecity Smart Toaster features an intuitive touch screen for easy operation.

1. **Insert Bread:** Place up to two slices of bread, bagels, or other items into the toasting slots. The wide slots (1.5 inches) accommodate various bread thicknesses.
2. **Select Browning Level:** On the touch screen, select your desired browning level from 1 to 6. Level 1 is the lightest, and Level 6 is the darkest. The display will show the selected level and estimated toasting time.
3. **Select Bread Type (Optional):** For optimized results, touch the icon corresponding to your bread type (Bagel, Gluten Free, White, Waffle, Muffin, Grain). This adjusts the toasting cycle for specific bread characteristics.
4. **Use Special Functions (Optional):**
 - **DEFROST:** Press this button to toast frozen bread. The toaster will automatically adjust the time to defrost and then toast.
 - **REHEAT:** Press this button to warm up already toasted bread without further browning.

- **CANCEL:** Press this button at any time to stop the toasting cycle and eject the bread. You can also press the toast lever up to cancel.
5. **Start Toasting:** Push the toast lever down until it locks into place. The display will show a countdown timer.
 6. **Completion:** Once the toasting cycle is complete, the bread will automatically pop up.

Smart Features:

- **Memorial Function:** The toaster will auto-record the setting of the last cycle. Simply press the lever directly to start working with the previous settings.
- **Save Energy:** The toaster will automatically enter sleep mode after 10 minutes of inactivity once toasting is completed.
- **Smart Management:** Toasting time will be reduced in continuous operation to prevent over-baking and ensure consistent results.

Easy Operation

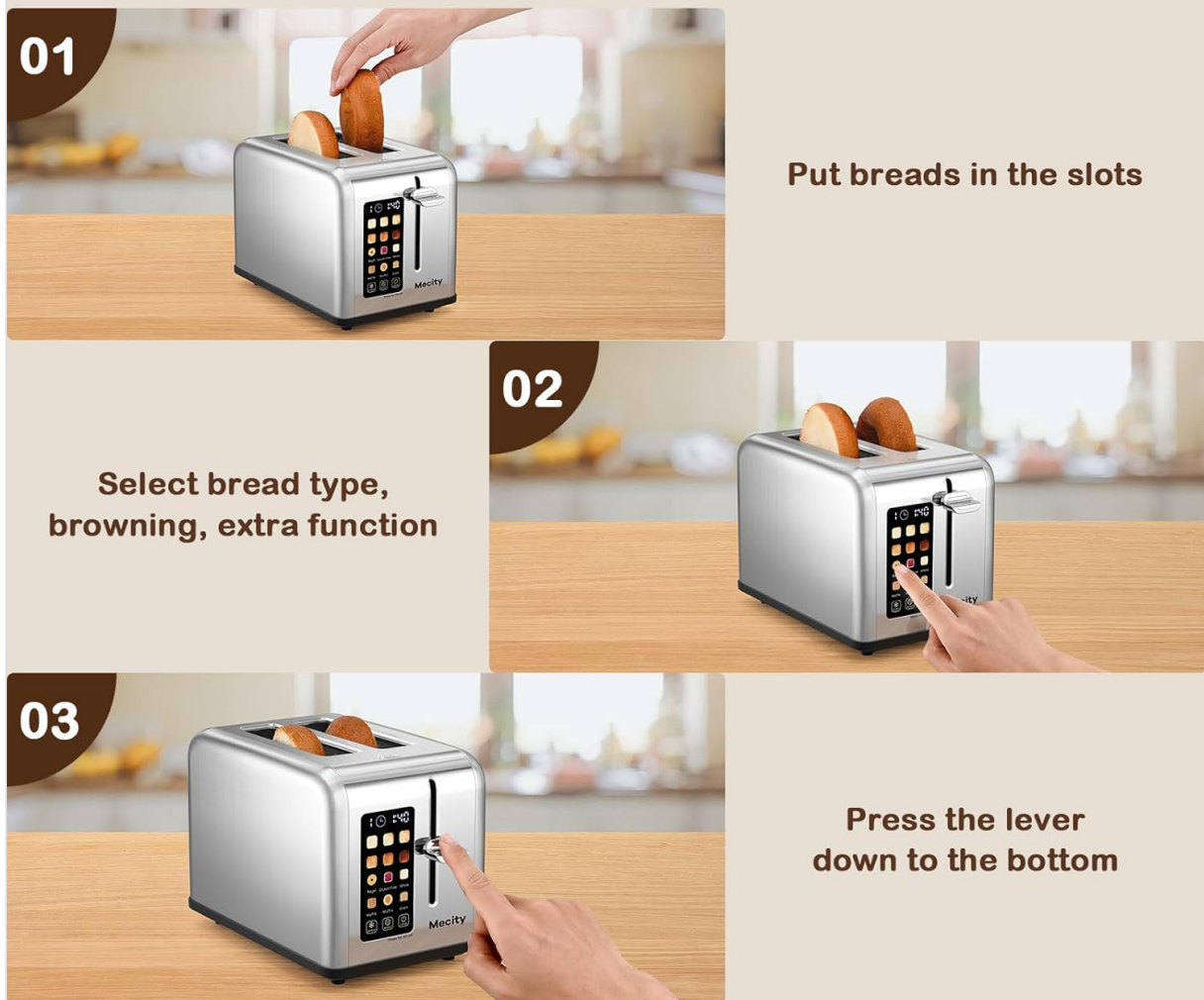


Image: Visual guide showing the three easy steps for operating the toaster: 1. Put breads in the slots, 2. Select bread type and browning, 3. Press the lever down.

Smart Programs For Various Breads



Image: Illustration of various bread types that can be toasted, including White Bread, Waffle, English Muffin, Gluten Free Bread, Bagel, and Whole Grain Bread.

5. MAINTENANCE AND CLEANING

Regular cleaning will help maintain your toaster's performance and appearance.

1. **Always Unplug:** Ensure the toaster is unplugged from the power outlet and completely cooled down before cleaning.
2. **Clean Crumb Tray:** Pull out the removable crumb tray located at the bottom rear of the toaster. Discard crumbs and wipe the tray clean with a damp cloth. Dry thoroughly before reinserting.
3. **Clean Exterior:** Wipe the exterior of the toaster with a soft, damp cloth. Do not use abrasive cleaners or metal scouring pads, as they may scratch the stainless steel finish.
4. **Do Not Immerse:** Never immerse the toaster in water or any other liquid.

6. TROUBLESHOOTING

If you encounter issues with your toaster, refer to the following common problems and solutions:

| Problem | Possible Cause | Solution |
|---------------------------------|-----------------------------------------------------------------|---------------------------------------------------------------------------------------------------------------------|
| Toaster does not turn on. | Not plugged in; power outage; circuit breaker tripped. | Ensure toaster is securely plugged in. Check power outlet and circuit breaker. |
| Toast is unevenly browned. | Inconsistent bread thickness; first use residue; crumb buildup. | Ensure bread slices are of uniform thickness. Perform a burn-off cycle if new. Clean crumb tray regularly. |
| Toast lever does not stay down. | Toaster is not plugged in; browning level not selected. | Plug in the toaster. Select a browning level on the touch screen before pushing the lever down. |
| Smoke coming from toaster. | Food stuck in slots; crumb buildup; high browning setting. | Immediately unplug. Allow to cool, then carefully remove any stuck food. Clean crumb tray. Reduce browning setting. |

7. SPECIFICATIONS

| | |
|----------------------------|-----------------------------------------------------------------------------------------------------|
| Brand: | Mecity |
| Model Number: | T-68A |
| Color: | Stainless Steel |
| Material: | Acrylonitrile Butadiene Styrene (ABS), Stainless Steel |
| Product Dimensions: | 10.2"D x 6.1"W x 7.1"H |
| Wattage: | 825 watts |
| Voltage: | 120V |
| Number of Slices: | 2 |
| Browning Settings: | 6 |
| Display Type: | LED Touch Screen |
| Special Features: | Built-In Timer, Removable Crumb Tray, Retractable Power Cord, Rust Proof, Variable Browning Control |
| Item Weight: | 3.36 pounds |
| UPC: | 679872994450 |



Image: Diagram showing the dimensions of the toaster: 10.2 inches deep, 6.1 inches wide, and 7.1 inches high.

8. WARRANTY AND SUPPORT

Mectomy stands behind the quality of its products. For warranty information, technical support, or any questions regarding your toaster, please refer to the warranty card included in the product packaging or contact Mectomy customer service directly. Contact details can typically be found on the manufacturer's official website or on the product packaging.