

Ring Ring Pan-Tilt Indoor Cam (2024 release)

Ring Pan-Tilt Indoor Cam User Manual

Brand: Ring | Model: Pan-Tilt Indoor Cam (2024 release)



Pan 360° around your home and tilt up and down, all in the Ring app

Image: The Ring Pan-Tilt Indoor Cam, a compact white camera, is shown with circular arrows indicating its 360-degree pan capability, emphasizing its comprehensive coverage.

SETUP GUIDE

This section provides step-by-step instructions for setting up your Ring Pan-Tilt Indoor Cam. The installation process is designed to be quick and straightforward, typically taking 5 to 10 minutes.

What's in the Box

- Pan-Tilt Indoor Cam
- Privacy Cover (attached to camera)
- USB-A to USB-C Charge Cable (10 ft)
- 10W USB-A Power Adapter
- Mounting Plate
- Wall Mounting Bracket
- Install Hardware
- Setup Guide
- Warranty and Safety Document
- Security Sticker

Installation Steps

1. **Choose a Location:** Select an indoor location with a standard power outlet within reach of the 10 ft USB-A to USB-C power cable. The camera can be placed on a flat surface or mounted to a wall using the included hardware.
2. **Connect Power:** Plug the USB-C end of the power cable into the camera and the USB-A end into the power adapter. Plug the adapter into a standard power outlet.
3. **Download the Ring App:** Download the Ring app from your mobile device's app store (iOS or Android).
4. **Set Up in App:** Open the Ring app, create an account or log in, and follow the in-app instructions to add your new Pan-Tilt Indoor Cam. You will be guided through connecting the camera to your 2.4GHz Wi-Fi network.
5. **Test Functionality:** Once connected, test the live view, pan-tilt controls, and two-way talk features within the app to ensure proper operation.



Turn off your camera and mic with the manual Privacy Cover

Image: A person's hand is shown connecting the power cable to the back of the Ring Pan-Tilt Indoor Cam, illustrating the ease of installation.

OPERATING YOUR RING PAN-TILT INDOOR CAM

The Ring Pan-Tilt Indoor Cam offers advanced features for comprehensive indoor monitoring. Familiarize yourself with its capabilities to maximize your home security.

Pan-Tilt Functionality

Control your view with the camera's smooth 360° pan coverage and 169° tilt coverage directly from the Ring app. This allows you to remotely adjust the camera's perspective to monitor different areas of a room.

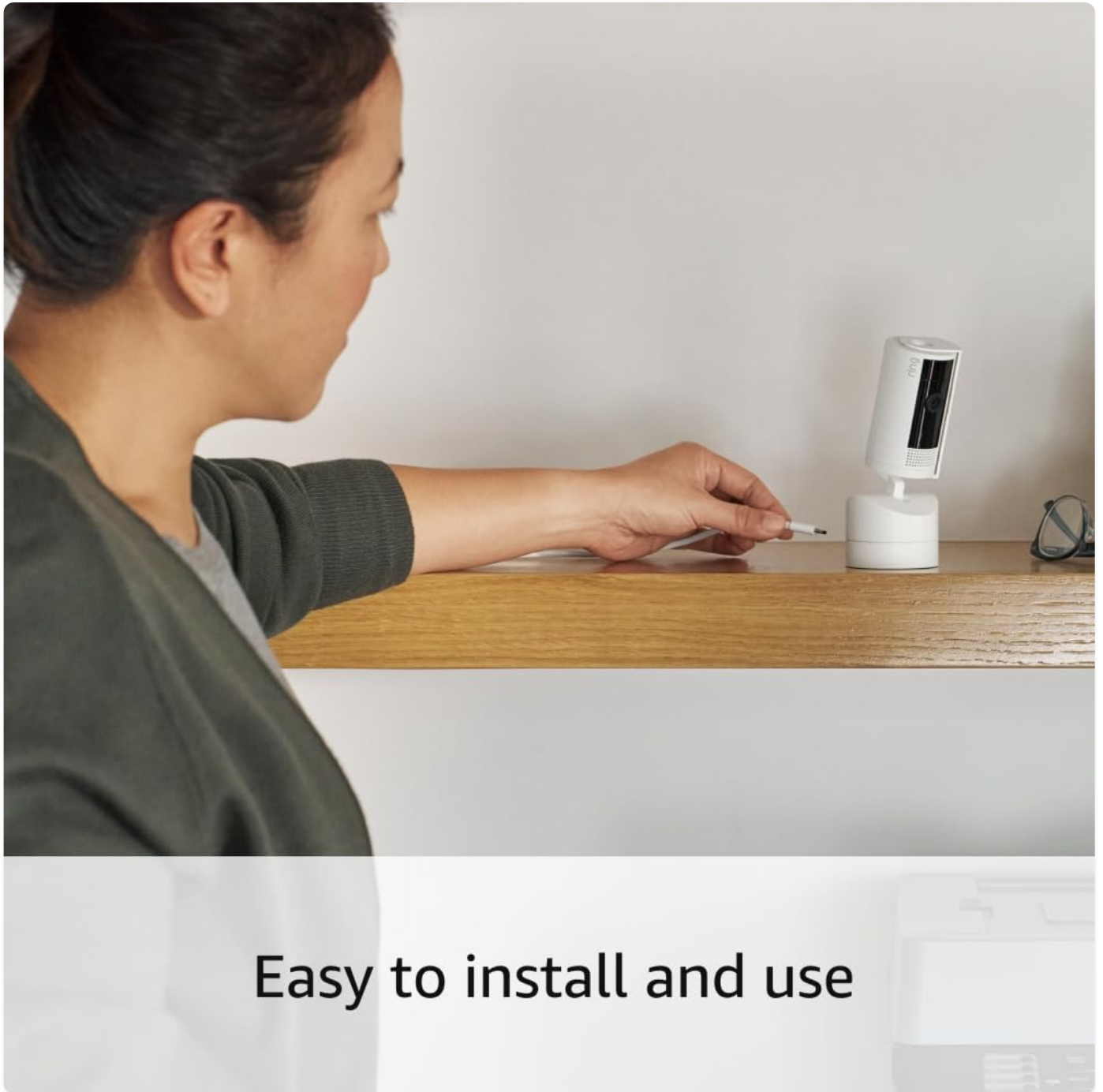


View and respond to activity with Live View and Two-Way Talk

Image: A golden retriever dog is shown in a living room, with the Ring Pan-Tilt Indoor Cam positioned on a cabinet, demonstrating its ability to monitor a wide area.

Live View and Two-Way Talk

Access real-time video and audio from your camera at any time using the Live View feature in the Ring app. The Two-Way Talk function allows you to speak to anyone within range of the camera and hear their response, facilitating real-time interaction.



Easy to install and use

Image: A person's hands hold a smartphone displaying the Ring app, showing a live feed from the camera with a dog in the room, highlighting the interactive Live View and Two-Way Talk features.

Video Quality and Night Vision

The camera provides 1080p HD video for clear and detailed footage. With Color Night Vision, you can see clearly even in low-light conditions, ensuring continuous monitoring day and night.

Privacy Features

The Pan-Tilt Indoor Cam includes a manual Privacy Cover. By sliding this cover, you can physically block the camera lens and disable the microphone, ensuring your privacy when needed.

"Alexa, show me the living room."



Works with Alexa

Image: A hand is shown sliding the physical privacy cover over the camera lens of the Ring Pan-Tilt Indoor Cam, demonstrating how to disable video and audio recording for privacy.

Alexa Integration

The Ring Pan-Tilt Indoor Cam seamlessly integrates with Alexa-enabled devices. You can use voice commands to view your camera's live feed on compatible Echo Show devices, receive custom notifications, and enhance your hands-free home monitoring experience.



Image: An Echo Show smart display shows the live feed from the Ring Pan-Tilt Indoor Cam, demonstrating its compatibility and integration with Alexa for voice-controlled monitoring.

MAINTENANCE

Regular maintenance ensures the optimal performance and longevity of your Ring Pan-Tilt Indoor Cam.

Cleaning

- Gently wipe the camera lens and body with a soft, dry, lint-free cloth.
- Avoid using liquid cleaners, aerosols, or abrasive solvents, as these can damage the device.

Software Updates

Your Ring Pan-Tilt Indoor Cam receives guaranteed software security updates for at least four years after its last availability for purchase as a new unit on Ring's websites. Ensure your device is connected to the internet to receive these

updates automatically, which provide performance improvements and security enhancements.

TROUBLESHOOTING

If you encounter issues with your Ring Pan-Tilt Indoor Cam, refer to the common problems and solutions below.

Common Issues and Solutions

- **No Power:** Ensure the power adapter is securely plugged into a working outlet and the USB-C cable is firmly connected to the camera.
- **Wi-Fi Connectivity Issues:** Verify your Wi-Fi network is operating on 2.4GHz. Ensure your internet connection meets the minimum upload speed of 2 Mbps for optimal performance. Try restarting your router and the camera. If issues persist, try re-connecting the camera to Wi-Fi through the Ring app.
- **Poor Video Quality:** Check your internet speed. A weak Wi-Fi signal can affect video quality. Ensure there are no obstructions between the camera and your Wi-Fi router.
- **Pan-Tilt Not Responding:** Ensure the camera has a stable power and internet connection. Close and reopen the Ring app. If the issue persists, try restarting the camera by unplugging and re-plugging it.
- **Two-Way Talk Problems:** Check your device's microphone and speaker settings in the Ring app. Ensure your mobile device's volume is up.
- **Motion Detection Not Working:** Review your Customizable Motion Detection settings in the Ring app. Ensure motion alerts are enabled.

TECHNICAL SPECIFICATIONS

Feature	Specification
Dimensions	2.37 in x 2.37 in x 5.78 in (6.02 cm x 6.02 cm x 14.69 cm) including stand
Available Colors	White, Black, Blush, Starlight, Charcoal
Video	1080p HD, Live View, Color Night Vision
Motion Detection	Customizable Motion Detection
Field of View	Static: 143° diagonal, 115° horizontal, 59° vertical Pan-Tilt: 360° pan coverage, 169° tilt coverage
Audio	Two-way audio with noise cancellation
Power	10 ft USB-A to USB-C Power Cable + Power Adapter
Internet Requirements	Requires a minimum upload speed of 2 Mbps for optimal performance
Connectivity	802.11 b/g/n wifi connection @ 2.4GHz
Estimated Install Time	5 to 10 minutes
Operating Conditions	-4°F to 113°F (-20°C to 45°C)

Feature	Specification
Setup Requirement	Standard power outlet

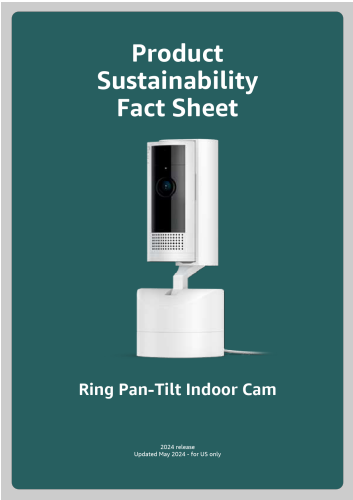
WARRANTY INFORMATION

The Ring Pan-Tilt Indoor Cam comes with a one-year limited warranty. For detailed terms and conditions, please refer to the Warranty and Safety Document included in your product box or visit the official Ring website.

CUSTOMER SUPPORT

For further assistance, technical support, or to explore additional Ring products and services, please visit the official Ring website or contact their customer support team.
You can find more information and support resources by visiting the [Ring Store on Amazon](#).

Documents - Ring – Ring Pan-Tilt Indoor Cam (2024 release)



[Ring Pan-Tilt Indoor Cam Product Sustainability Fact Sheet](#)
Details on the sustainability of the Ring Pan-Tilt Indoor Cam, including its carbon footprint, materials, energy usage, life cycle assessment, and Amazon's commitment to environmental responsibility.
lang:en score:18 filesize: 6.81 M page_count: 9 document date: 2024-04-12