



Manuals.plus /

› **BoxWave** /

› BoxWave VersaView Aluminum Stand Instruction Manual for Keyence DX-W600

BoxWave VersaView Aluminum Stand

BoxWave VersaView Aluminum Stand Instruction Manual

Compatible with Keyence DX-W600 and other devices

INTRODUCTION

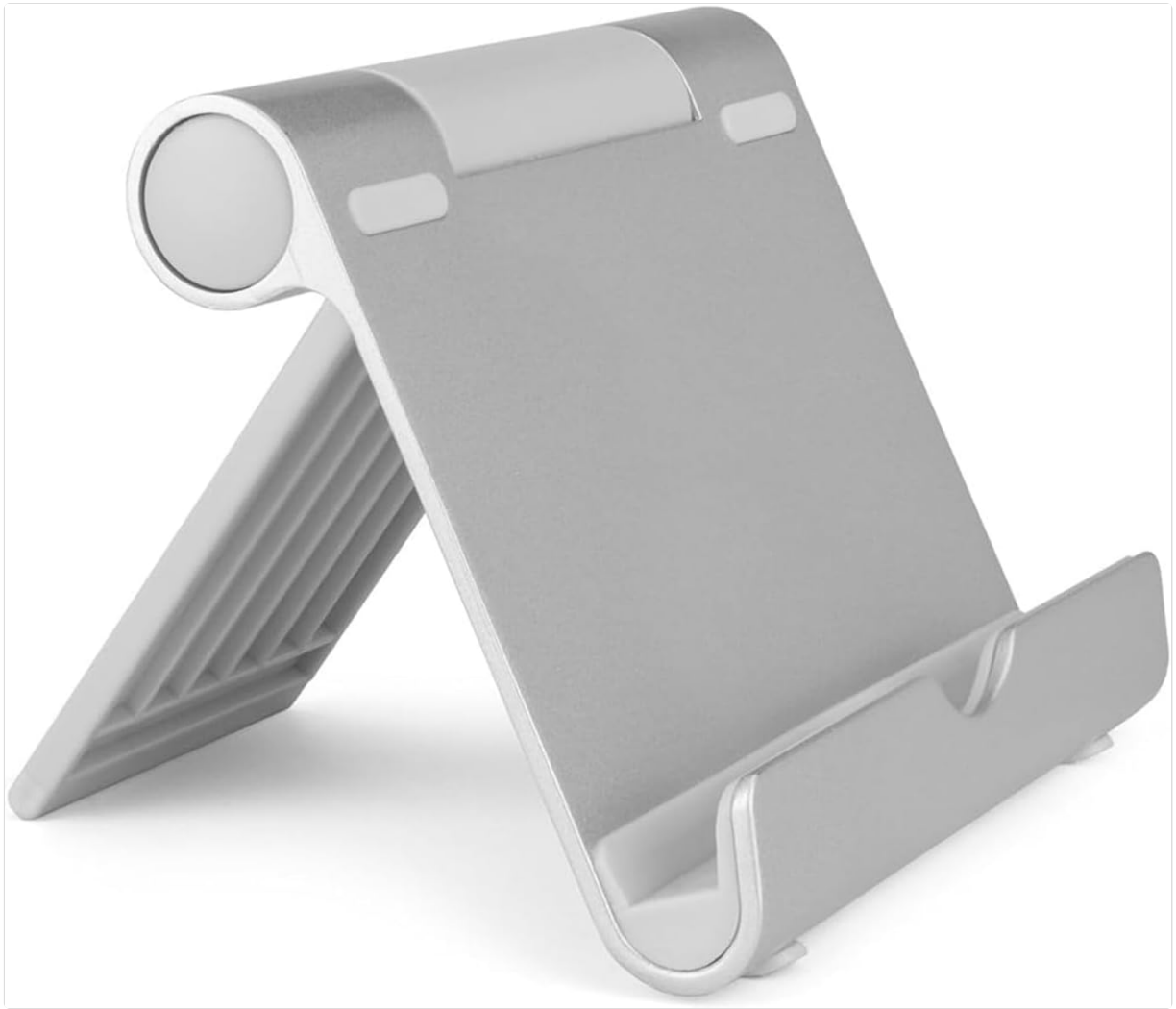
This manual provides comprehensive instructions for the setup, operation, and maintenance of your BoxWave VersaView Aluminum Stand. Please read this manual carefully to ensure proper use and to maximize the lifespan of your product. Keep this manual for future reference.

PRODUCT OVERVIEW

The BoxWave VersaView Aluminum Stand is a portable, multi-angle viewing stand designed to securely hold various devices, including the Keyence DX-W600. Its robust aluminum construction and thoughtful design provide a stable and adjustable platform for hands-free viewing.

Key Features:

- **Hands-Free Viewing:** Supports both vertical and horizontal device positioning.
- **Sturdy & Lightweight:** Constructed from durable aluminum for stability without excessive weight.
- **Non-Slip Base:** Features anti-slip rubber feet and landing pads to prevent movement and protect surfaces.
- **Adjustable Angles:** Offers 9 different viewing angles for optimal comfort and versatility.
- **Compact & Portable:** Folds flat to under 1 inch (2.54 cm) thickness for easy transport.



The BoxWave VersaView Aluminum Stand, showcasing its compact and functional design.



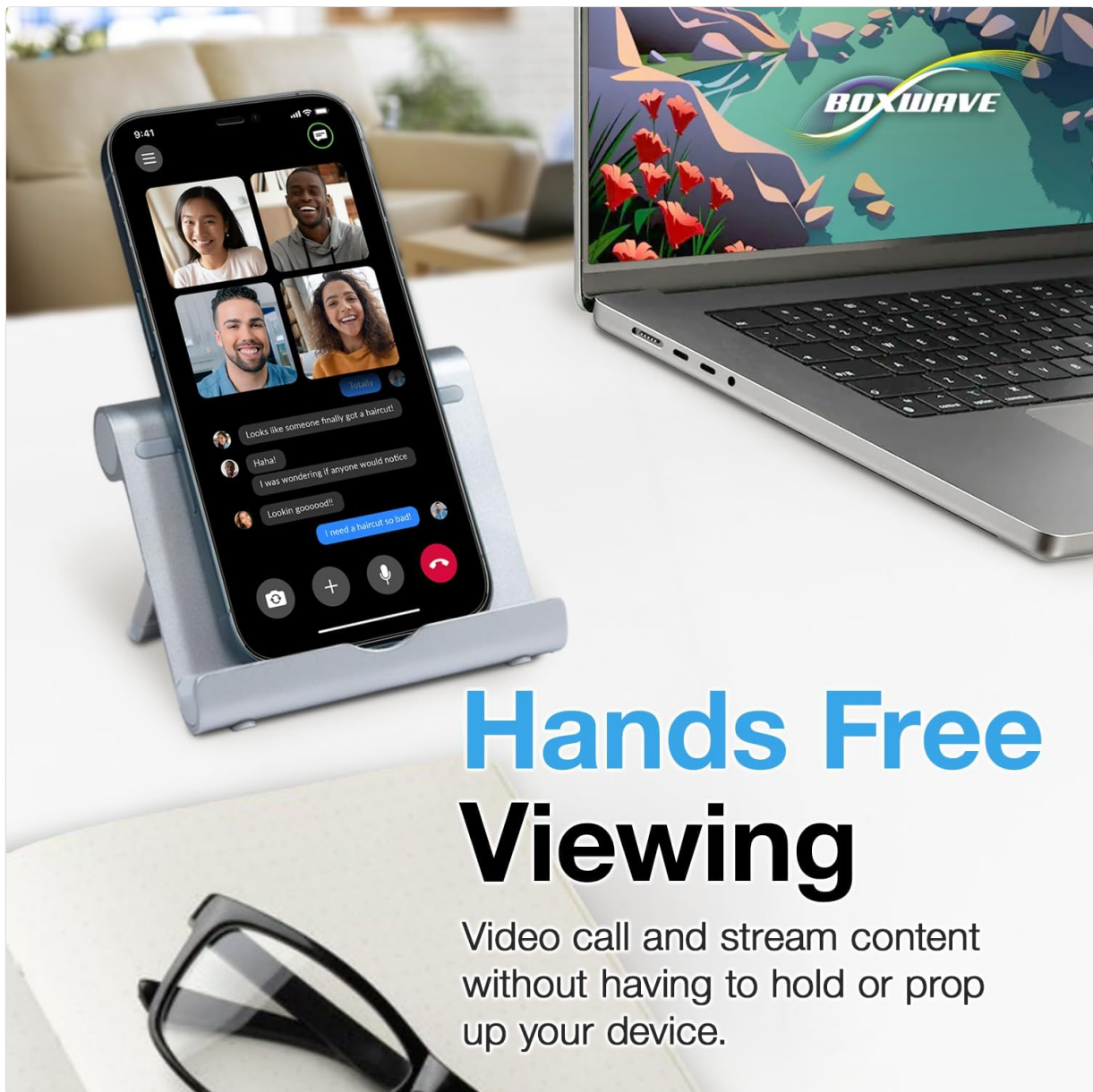
Versatility Across Devices



The VersaView stand offers versatility, accommodating various devices in different orientations.

SETUP

1. **Unfold the Stand:** Gently pull the two main sections of the stand apart until it forms a stable A-frame shape.
2. **Adjust the Angle:** Press the button on the side of the stand (if applicable, or simply adjust the hinge) to select one of the 9 available viewing angles. Ensure both sides are set to the same angle for stability.
3. **Place Your Device:** Carefully place your device (e.g., Keyence DX-W600, smartphone, tablet) onto the stand's front lip. Ensure it rests securely against the back support.



Hands Free Viewing

Video call and stream content without having to hold or prop up your device.

Set up your device for hands-free viewing, ideal for video calls or streaming.

OPERATING INSTRUCTIONS

Adjusting Viewing Angles:

The VersaView stand features 9 distinct viewing angles. To change the angle, gently lift your device off the stand. Then, adjust the rear support arm to the desired position. The stand will click into place at each predefined angle. Once the desired angle is set, place your device back onto the stand.



Multiple Viewing Angles

VersaView adjusts to 9 different angles for a custom viewing experience



The stand offers 9 adjustable angles for a customized viewing experience.

Device Placement:

Ensure your device is centered on the stand's front lip for optimal balance and stability. The rubberized landing pads and feet provide a secure grip, preventing your device from slipping and protecting its surface from scratches.



Grip & Protection

Rubberized feet and landing pads keep your device from slipping



Rubberized feet and landing pads ensure grip and protection for your device and surfaces.

Portability:

When not in use, the stand can be folded flat for easy storage and transport. This compact design allows it to fit conveniently into a bag or pocket.



Portable & Compact

VersaView folds down to a mere 1 inch thickness, making it perfect for travel and commuting.



The stand folds flat to a mere 1-inch thickness, making it highly portable.

MAINTENANCE

To maintain the appearance and functionality of your BoxWave VersaView Aluminum Stand, follow these simple guidelines:

- **Cleaning:** Wipe the stand with a soft, damp cloth. Avoid using abrasive cleaners or solvents, as these may damage the finish.
- **Storage:** Store the stand in a clean, dry place when not in use.
- **Inspection:** Periodically check the hinges and rubber pads for any signs of wear or damage.

TROUBLESHOOTING

Issue: Stand feels unstable or wobbles.

Solution:

- Ensure the stand is placed on a flat, stable surface.
- Verify that both support arms are locked into the same angle position.

- Confirm your device is centered on the stand's front lip.
- Check if the rubber feet are clean and free of debris.

Issue: Device slips off the stand.

Solution:

- Ensure the device is properly seated against the back support and on the front lip.
- Clean the rubberized landing pads and the back of your device to ensure maximum grip.
- Avoid placing excessively heavy or oversized devices on the stand that exceed its design capacity.

SPECIFICATIONS

Product Name	BoxWave VersaView Aluminum Stand
Material	Aluminum
Item Weight	7.5 ounces (approximately 212 grams)
Folded Thickness	Under 1 inch (2.54 cm)
Adjustable Angles	9 positions
Manufacturer	BoxWave

WARRANTY AND SUPPORT

For any questions, technical assistance, or support regarding your BoxWave VersaView Aluminum Stand, please contact BoxWave customer service directly. Refer to the product packaging or the official BoxWave website for the most current contact information and warranty details.

Please note that any mention of compatibility with specific devices, such as the Keyence DX-W600, refers to the stand's ability to hold the device and does not imply endorsement or affiliation with the device manufacturer.