



Manuals.plus /

› SUPRENT PRO /

› SUPRENT PRO Professional Hair Clippers and Trimmer Set (Model HC776BX) User Manual

## SUPRENT PRO HC776BX

# SUPRENT PRO Professional Hair Clippers and Trimmer Set User Manual

MODEL: HC776BX

### Important Safety Information

---

Please read all instructions carefully before using the appliance. Keep this manual for future reference.

- Avoid use near water or heat sources.
- Do not use while sleeping or unconscious.
- Keep the appliance dry. Do not immerse in water or other liquids.
- Do not use if the appliance or charging cable is damaged.
- Keep out of reach of children.

### Product Overview

---

The SUPRENT PRO Professional Hair Clippers and Trimmer Set is designed for precise hair cutting and trimming. This set features a high-torque brushless motor, detachable blades, and a cordless design for professional and home use.

### Package Contents

- Hair Clipper
- Hair Trimmer
- Charging Stand (for clipper)
- Charging Stand (for trimmer)
- Guide Combs (various sizes)
- USB Cables
- Cleaning Brush

- Blade Oil

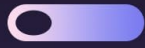


Image: The complete SUPRENT PRO Hair Clippers and Trimmer Set, including both devices, charging stands, various guide combs, USB cables, cleaning brush, and blade oil.

## Key Features

- High Torque Brushless Motor: Provides 7000RPM for efficient cutting and extended service life.
- Detachable One-Piece Cutter Head: Allows for easy cleaning and zero-gap adjustment.
- Adjustable Blade: Taper lever for blade adjustment from 0.5mm to 2.0mm.
- Anti-Slip Textured Rubber Grip: Ensures comfortable and secure handling.
- Cordless Charging Base: Convenient charging solution for both clipper and trimmer.

## DETACHABLE BLADE



Unprecedented  
Disassembly Experience  
Zero-gap Adjustable



## ONE-PIECE CUTTER HEAD

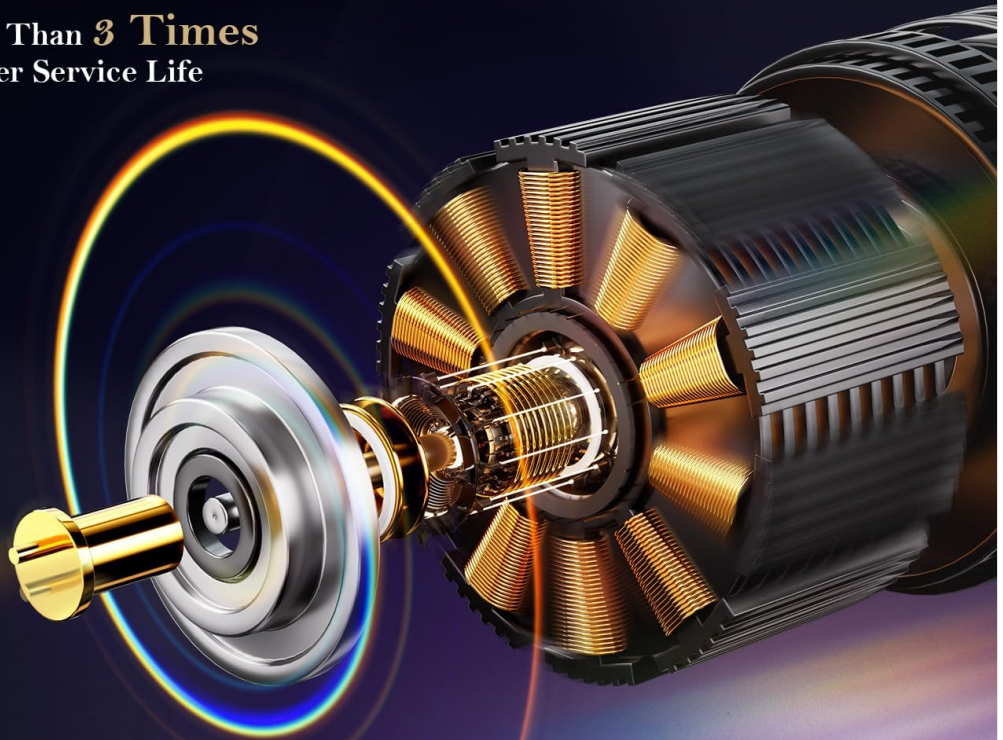
Easy Reach Zero Gap

Image: Detailed view of the detachable blade system, highlighting the ease of removal and adjustment for cleaning and zero-gapping.

# HIGH TONQUE BRUSHLESS MOTOR

For Both Clipper & Trimmer

More Than **3 Times**  
Longer Service Life



 7000RPM/14000SPM

 Mighty Engine

 Low Noise <60db

Image: An internal diagram showcasing the high torque brushless motor, emphasizing its 7000 RPM performance and low noise operation.

# ULTRA-SKIN-FRIENDLY

**MORE SCIENTIFIC GRIP**

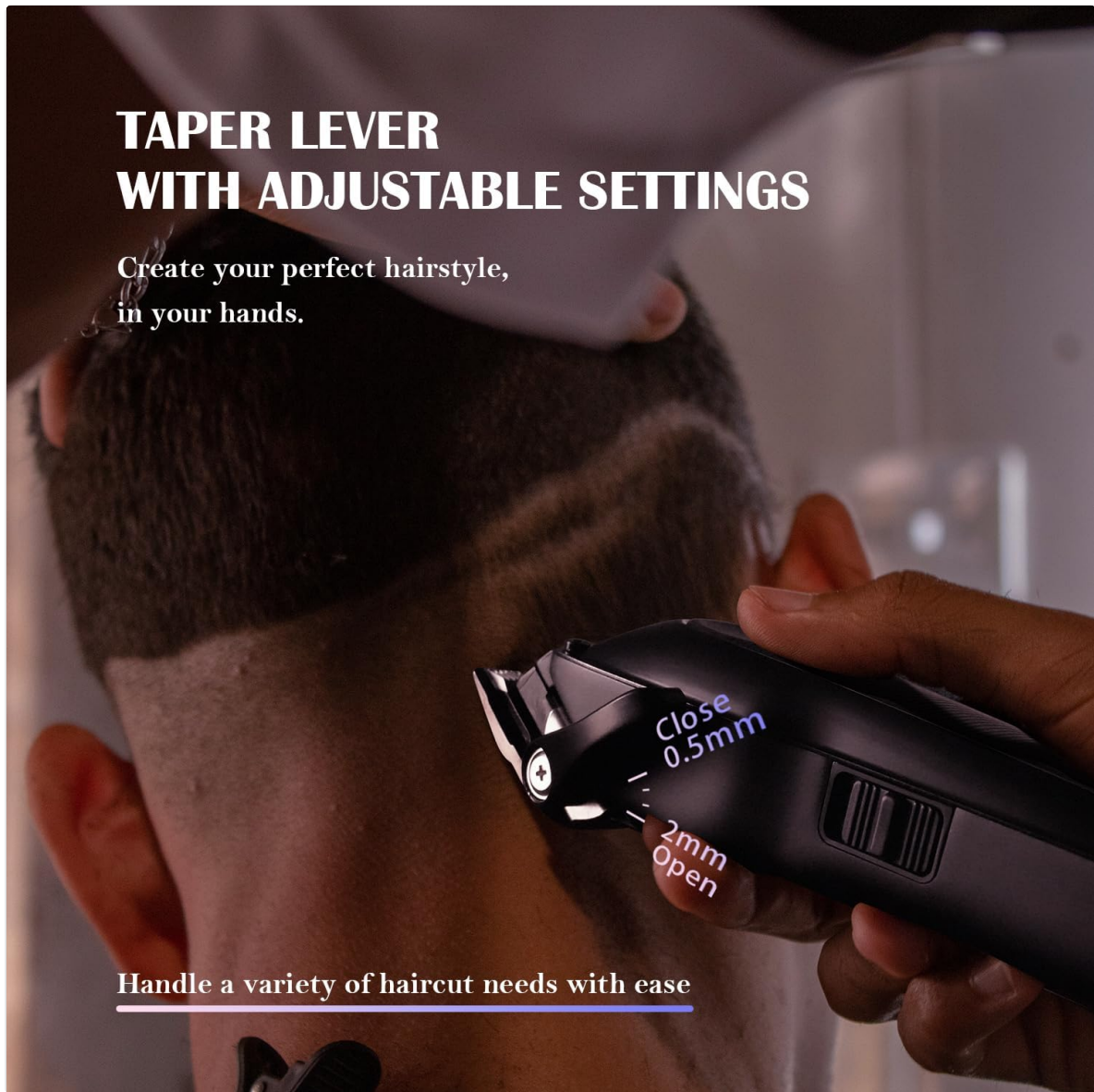
**Rubber Grip**  
**Non-slip & Drop-proof,**  
**The grip of this hair clipper is second to none.**



Image: A hand demonstrating the comfortable and secure hold provided by the anti-slip textured rubber grip on the clipper.

# TAPER LEVER WITH ADJUSTABLE SETTINGS

Create your perfect hairstyle,  
in your hands.



Handle a variety of haircut needs with ease

Image: A close-up of the taper lever, indicating the adjustable blade settings from 0.5mm to 2.0mm for precise cutting lengths.

## Setup

---

### 1. Initial Charging

Before first use, fully charge both the hair clipper and trimmer. Place each device onto its respective charging stand and connect the USB cable to a suitable power source. The battery indicator on the device will show charging progress. A full charge typically takes several hours.

### 2. Attaching Guide Combs

Select the desired guide comb for your preferred hair length. Align the comb with the blade and push it firmly until it clicks into place. Ensure the comb is securely attached before use.

# DLC COATED DOUBLE BLADE

Even steel wool can be  
cut effortlessly



Image: An assortment of guide combs, illustrating the different sizes available for varying hair lengths.

## Operation

Follow these steps for effective use of your SUPRENT PRO hair clipper and trimmer:

1. Unbox the kit and ensure all components are present.
2. Attach the detachable blade to the clipper (if not already attached).
3. Adjust the guard combs to the desired length.
4. Charge the clipper using the charging base.
5. Turn on the clipper and select the desired speed setting.
6. Guide the trimmer over the desired area, following the natural direction of hair growth.
7. After use, clean the blade and guard combs with the provided brush.
8. Store the clipper in a safe place and avoid using it near water or heat sources.

### Adjusting Blade Length (Taper Lever)

The clipper features an adjustable taper lever on the side, allowing you to fine-tune the cutting length from 0.5mm (closed) to 2.0mm (open) without changing guide combs. This is ideal for blending and

fading.

## Maintenance

---

Regular maintenance ensures optimal performance and extends the lifespan of your SUPRENT PRO devices.

### 1. Cleaning the Blades

- After each use, turn off the device and remove any attached guide comb.
- Use the provided cleaning brush to remove loose hairs from the blades and the area around them.
- For thorough cleaning, the one-piece cutter head can be detached. Gently push the blade assembly forward until it separates from the main body. Clean both parts thoroughly.

### 2. Oiling the Blades

- After cleaning and before each use, apply 1-2 drops of the provided blade oil across the teeth of the blades.
- Turn on the device for a few seconds to allow the oil to distribute evenly.
- Wipe off any excess oil with a soft cloth.

### 3. Detaching and Reattaching Blades

- To detach: Ensure the device is off. Gently push the blade assembly forward until it unclips from the housing.
- To reattach: Align the blade assembly with the slot on the device body and push it back until it clicks securely into place.

## Troubleshooting

---

If you encounter issues with your SUPRENT PRO device, refer to the following common problems and solutions:

Problem	Possible Cause	Solution
Device not turning on	Low battery; Device not charged	Charge the device fully using the charging stand and USB cable.
Reduced cutting performance	Blades are dull, dirty, or not oiled	Clean and oil the blades. If performance does not improve, consider replacing the blade assembly.
Device gets hot during use	Extended continuous use; Blades need oiling	Allow the device to cool down. Ensure blades are clean and properly oiled.
Battery not charging	Charging cable or stand faulty; Device not properly seated	Ensure the device is correctly placed on the charging stand and the USB cable is securely connected to a working power source. Try a different USB cable or power adapter.

## Specifications

---

- **Model Number:** HC776BX
- **Product Dimensions:** 6.69 x 2.17 x 1.77 inches
- **Weight:** Approximately 3.4 Pounds (total package)
- **Motor:** High Torque Brushless Motor (7000 RPM)
- **Battery Type:** Lithium Ion
- **Manufacturer:** SUPRENT
- **First Available:** November 5, 2023

## Warranty and Support

---

For warranty information or technical support, please contact SUPRENT customer service. Refer to the product packaging or the official SUPRENT website for contact details.

Extended protection plans may be available for purchase. Please check with your retailer for details on 2-Year or 3-Year Protection Plans.

## Legal Disclaimer

---

Statements regarding dietary supplements have not been evaluated by the FDA and are not intended to diagnose, treat, cure, or prevent any disease or health condition. This product is intended for personal grooming and professional hair cutting purposes only.

