



Manuals.plus /

› chzk /

› chzk 100pcs Mini LED Lights (Model A01-Mini) Instruction Manual

chzk A01-Mini

chzk 100pcs Mini LED Lights (Model A01-Mini) Instruction Manual

Brand: chzk | Model: A01-Mini

INTRODUCTION

These chzk Mini LED Lights are designed for decorative purposes, offering a versatile and long-lasting lighting solution. They are suitable for various indoor and outdoor applications, including paper lanterns, balloons, vases, and general party decorations. The lights are waterproof and easy to operate, providing a warm white glow.

PRODUCT FEATURES

- **Waterproof Design:** Crafted from lightweight plastic, these LED lights are waterproof and safe for various applications, including use in water (e.g., vases).
- **Long-Lasting Illumination:** Each light includes 2 x 1.5V LR41 batteries, providing over 48 hours of operation. Optimal brightness is maintained for the first 12-13 hours.
- **Easy Operation:** Simply pull out the insulating tab to activate the light. To turn off and preserve battery life, reinsert the insulating tab.
- **Compact Size:** Mini size (0.5 inches in diameter) with a transparent case, making them easy to conceal within decorations.
- **Wide Application:** Ideal for house parties, birthdays, weddings, Christmas, Halloween, anniversaries, Easter, graduation parties, and other cherished occasions.

WHAT'S IN THE BOX

The package contains:

- 100 x chzk Mini LED Lights (Warm White, Medium size)
- Pre-installed LR41 batteries (2 per light)

SETUP

Setting up your chzk Mini LED Lights is straightforward:

1. **Unpack:** Carefully remove the LED lights from their packaging.
2. **Activate:** Each light has a small insulating tab located at its base. Gently pull this tab out to activate the light. The light should immediately turn on.
3. **Placement:** Place the activated lights in your desired decorative location, such as inside paper lanterns, balloons, vases, or scattered on surfaces.



Figure 1: Illustration of pulling out the insulating tab to turn on the light and reinserting it to turn off.

OPERATING INSTRUCTIONS

The chzk Mini LED Lights are designed for simple operation:

- **Turning On:** To turn on a light, locate the small insulating tab at its base and pull it out completely. The light will illuminate.
- **Turning Off:** To conserve battery life, reinsert the insulating tab firmly back into the slot at the base of the light. This will turn the light off.
- **Placement:** These lights are versatile. They can be placed inside balloons before inflation, dropped into paper lanterns,

used in clear vases with or without water, or scattered as ambient lighting.

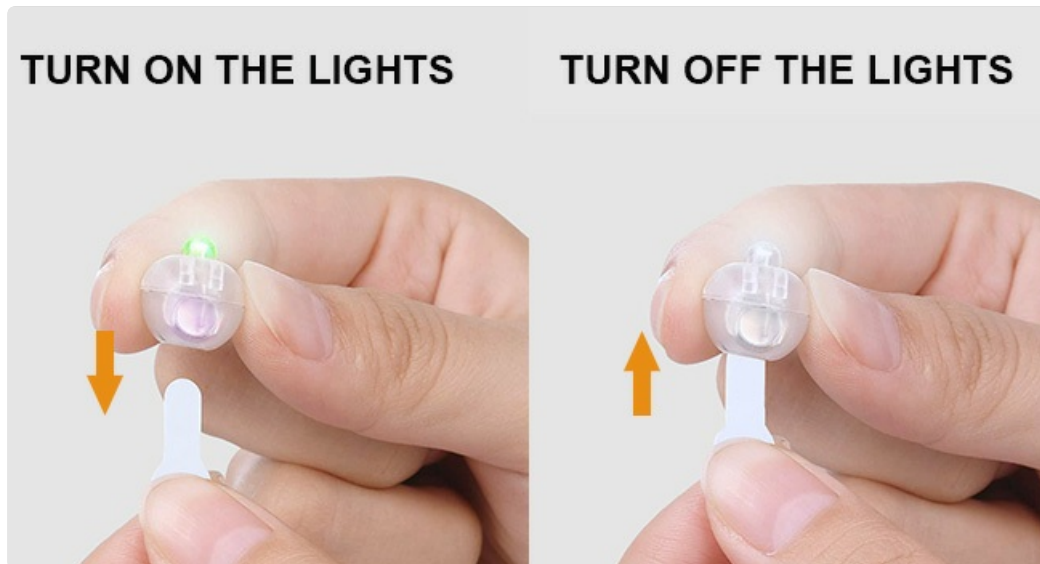


Figure 2: Examples of how to use the mini LED lights for decoration.

Your browser does not support the video tag.

Video 1: An official product video demonstrating the chzk LED Balloon Lights in various colorful applications, showcasing their versatility and brightness.

MAINTENANCE

To ensure the longevity and optimal performance of your chzk Mini LED Lights, follow these maintenance guidelines:

- **Battery Conservation:** Always reinsert the insulating tab when the lights are not in use to prevent battery drain.
- **Cleaning:** If necessary, gently wipe the exterior of the lights with a dry or slightly damp cloth. Do not use harsh chemicals or abrasive materials.
- **Storage:** Store the lights in a cool, dry place away from direct sunlight when not in use.
- **Battery Replacement:** The LR41 batteries are small and can be replaced if needed, though the lights are designed for extended use with the included batteries. To replace, carefully open the light casing (if designed for user access) and insert new LR41 batteries, ensuring correct polarity.

TROUBLESHOOTING

If you encounter issues with your chzk Mini LED Lights, refer to the following common solutions:

Problem	Possible Cause	Solution
Light does not turn on.	Insulating tab not fully removed. Batteries are depleted.	Ensure the insulating tab is completely pulled out. Replace the LR41 batteries.
Light is dim.	Batteries are low.	Replace the LR41 batteries. Optimal brightness lasts 12-13 hours.
Light flickers.	Loose battery connection or low battery.	Check battery placement. Replace batteries if they are low.

SPECIFICATIONS

Attribute	Detail
Brand	chzk
Model Number	A01-Mini
Item Type Name	D11-QQD100
Color	Warm White
Shape	Sphere / Round
Material Type	Plastic
Product Dimensions	0.5"D x 0.5"W x 0.6"H
Item Weight	0.31 Pounds (for the pack)
Light Source Type	LED
Power Source	Battery Powered (2 x 1.5V LR41 per light)
Switch Type	Pull Tab (Insulating Tab)
Water Resistance Level	Waterproof
Indoor/Outdoor Usage	Outdoor
Number of Items	100 (Medium size pack)
UPC	753853614091

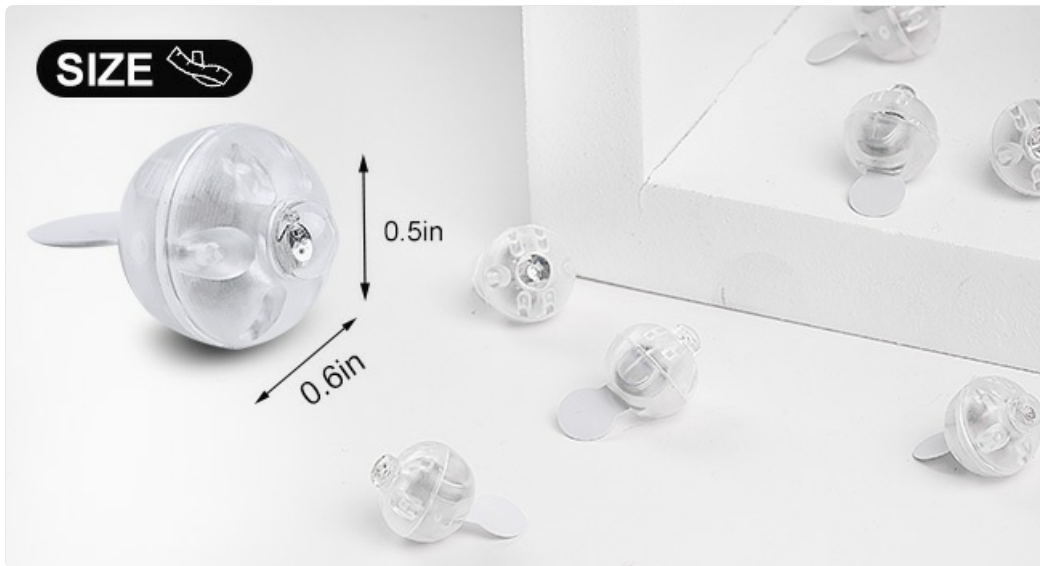


Figure 3: Dimensions of the chzk Mini LED Light.

WARRANTY AND SUPPORT

Manufacturer Warranty: This product comes with a 1-month manufacturer's warranty.

For any support inquiries or warranty claims, please contact the manufacturer, chzk, through their official channels or the retailer where the product was purchased.

