

## Tera P01 (ZA05-U007K series)

# Tera Portable EV Charger P01 User Manual

Model: P01 (ZA05-U007K series) | Brand: Tera

## 1. INTRODUCTION

This manual provides detailed instructions for the safe and efficient use of your Tera Portable EV Charger P01. This Level 1 & 2 J1772 charger is designed for electric vehicles, offering flexible charging options with NEMA 14-50 and 5-15 compatibility, Wi-Fi connectivity, and a 25FT cable. Please read this manual thoroughly before operation and retain it for future reference.

## 2. SAFETY INFORMATION

**WARNING: Failure to follow these safety instructions could result in fire, electric shock, injury, or damage to the product or property.**

- Ensure the charging unit is properly grounded.
- Do not use the charger if the cable or connector is damaged.
- Do not immerse the charger in water or other liquids.
- Keep children away from the charging area during operation.
- Only use the charger with compatible electric vehicles (J1772 EVs).
- Disconnect power before cleaning or performing any maintenance.
- The charger is ETL & Energy Star certified, indicating adherence to high safety and energy efficiency standards.

The Tera EV Charger is designed with multiple protection features including overvoltage, overload, overheat, ground, earth leakage, and short circuit protection. It also features IP66 and Type 4 protection for water and dust resistance.



Image: Safety and Reliability features of the Tera EV Charger, highlighting ETL and FCC certifications, IP66 rating, and 24/7 support.

### 3. PACKAGE CONTENTS

Verify that all items are present in the package:

- Portable EV Charger (1 unit)
- J1772 Cable Wall Mount Box Holder (1 unit)
- Storage Bag (1 unit)
- EV Charger Screw Kit (1 set)
- User Manual (1 copy)



Image: Contents of the Tera Portable EV Charger P01 package, showing the main unit, connectors, wall mount, storage bag, and screw kit.

### 4. SETUP

#### 4.1 Portable Use

For portable use, simply connect the NEMA 14-50 plug to a compatible 240V outlet or use the appropriate adapter for a 120V outlet (if applicable, verify product specifications for 5-15 compatibility). Ensure the outlet is rated for the charger's current draw.



Image: The Tera Portable EV Charger P01 and its storage bag, illustrating its portability.

#### 4.2 Wall-Mounted Installation

The charger can be permanently installed using the included wall mount box holder. Choose a suitable location near your parking spot with access to a compatible electrical outlet.

1. Select a sturdy wall surface.
2. Use the screw kit to securely attach the J1772 Cable Wall Mount Box Holder to the wall.
3. Mount the charger unit onto the holder.
4. Ensure the charging cable can reach your vehicle's charging port without strain.

# SAFE & RELIABLE



Image: The Tera Portable EV Charger P01 installed on a wall, showcasing its fixed-use capability.

## 5. OPERATING INSTRUCTIONS

### 5.1 Connecting to Your EV

1. Ensure the charger is plugged into a power source.
2. Open your vehicle's charging port.
3. Insert the J1772 connector firmly into the vehicle's charging port until it clicks into place.
4. The charger will begin the charging process automatically if in "Plug-and-Play" mode.

### 5.2 Smart LED Screen Display

The integrated LED screen provides real-time charging information:

- **Amperage:** Current charging rate (e.g., 32A).
- **Charging Speed:** Indication of charging progress.
- **Input Voltage:** Current voltage from the power source (e.g., 240V).



- **Delay Time:** If scheduled charging is active.
- **Charging Practices:** Status indicators.

# Intelligent LED Touchscreen Display



**Short Press:**  
Adjust Current

**Long Press:**  
Switch Charging Mode



Indicator Light



Schedule Charging



**Return to factory settings**

Simultaneously long press



Image: Detailed view of the Tera EV Charger's LED touchscreen, illustrating the controls for current adjustment, charging mode selection, and scheduling.

## 5.3 Adjustable Current with Memory Function

The charger supports adjustable current settings from 8A to 32A. The system remembers the last used current setting for continuous use. It will only revert to the default 12 amps after a reboot.

- **Short Press 'A' Button:** Adjust current (8A, 15A, 24A, 32A).
- **Long Press 'A' Button:** Switch charging mode (Plug-and-Play or APP Start).

*Note: Hybrid vehicles may automatically reduce current based on their maximum allowed value.*

## 5.4 App Control (Smart Life)

The Tera EV Charger can be controlled via the Smart Life app, offering advanced features:

- **Reserve Charging:** Schedule charging times to take advantage of off-peak electricity rates.

- **Monitor Charging:** View real-time charging status.
- **View Expenses & Historical Records:** Track your charging costs and history.
- **Full-Charge Notifications:** Receive alerts when your vehicle is fully charged.

Download the Smart Life app from the [App Store](#) or [Google Play Store](#).



Image: The Smart Life app interface on a smartphone, demonstrating remote control and monitoring capabilities for the Tera EV Charger.

## 5.5 Scheduling Charging

You can schedule charging via the touchscreen, the Smart Life app, or your vehicle's onboard system. Scheduling allows you to charge during off-peak hours to save on costs.

- **Touchscreen:** Use the clock button to set delay times (1-12 hours).
- **App:** Utilize the "Schedule" function within the Smart Life app.
- **Vehicle Onboard System:** Refer to your vehicle's manual for scheduling options.

Your browser does not support the video tag.

Video: A demonstration of the Tera EV Charger's APP User Guide, showing how to control and schedule charging via the mobile

application.

## 6. MAINTENANCE

- Regularly inspect the charging cable and connector for any signs of wear or damage.
- Keep the charger unit clean and free from dust and debris. Use a soft, dry cloth for cleaning.
- Ensure the charging port on your vehicle is clean before connecting the charger.
- Store the charger in its storage bag when not in use, especially for portable applications, to protect it from environmental elements.

## 7. TROUBLESHOOTING

Issue	Possible Cause / Solution
Touch buttons unresponsive	Ensure the connector is pulled out from the vehicle. Touch buttons will not respond if the charging gun is inserted.
Charging not starting (APP Start mode)	If your mode is set to "APP Start", pull out the charging gun, long-press the 'A' button to switch to "Plug-and-Play" mode, then re-insert.
Abnormal behavior when adjusting current via App	Pause the charging process before making current adjustments via the App.
Charger not powering on	Check the power outlet and ensure the NEMA 14-50 plug is fully inserted. Verify power supply to the outlet.
Error indicator light	Refer to the LED indicator guide for specific error codes (e.g., flashing patterns for over voltage, ground fault, over-current, leakage, over-temperature). Disconnect and reconnect the charger. If the issue persists, contact customer support.

Your browser does not support the video tag.

Video: A short demonstration on how to reset the Tera EV Charger, which can resolve certain operational issues.

## 8. SPECIFICATIONS

- **Model:** P01 (ZA05-U007K series)
- **Input Voltage:** 110V / 240V
- **Adjustable Current:** 8A, 15A, 24A, 32A
- **Max Power:** 7.68 kWh (at 32A, 240V)
- **Cable Length:** 25 FT (Pure Copper)
- **Connector Type:** J1772 EVs
- **Plug Type:** NEMA 14-50 (with 5-15 compatibility, verify with manufacturer)
- **Certifications:** ETL, Energy Star, FCC, UL2231-1/-2, UL 991, UL 2231, UL 2251, UL1998 & UL 2594
- **Protection Level:** IP66, Type 4 (Waterproof)
- **Operating Temperature:** -22°F to 122°F (-30°C to 50°C)
- **Dimensions:** 15.83 x 12.76 x 7.05 inches (Package)

- **Weight:** 12.8 pounds

## 9. WARRANTY AND SUPPORT

Tera is a US-based brand with over 20 years of legacy. They offer a 2-year warranty on this product.

- **Warranty:** 2-Year Warranty.
- **Technical Support:** Lifetime technical support.
- **Customer Service:** 24/7 email support and phone support from 7 AM to 6 PM PST, Monday to Friday (excluding public holidays).

For assistance, please refer to the contact information provided with your product or visit the official Tera website.

### Tera History

Tera, conceived in the early 2000s, is under the ownership of ADM Tech, headquartered in California. With a rich history spanning over two decades, Tera has garnered global recognition and is diligently augmenting its footprint in the realm of advanced clean energy and optoelectronics.

### Tera Advantages

We boast our proprietary factory and state-of-the-art R&D center, offering extensive customization options.

### Tera Achievements



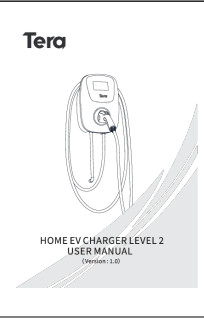
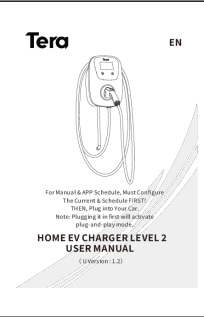

Tera has accumulated a vast customer base world-wide, from governments to Fortune Global 500 like: NASA, U.S. Border Patrol, Burberry, Plug Power, Airbus, Fujitsu, Siemens, TÜV, Sennheiser etc.

Image: Tera's commitment as a US-based brand, emphasizing design, development, and support in the USA.

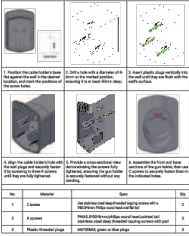
© 2024 Tera. All rights reserved.

**Related Documents - P01 (ZA05-U007K series)**



	<p><a href="#">Tera EV Charger User Guide and FAQ</a></p> <p>Comprehensive guide to the Tera EV charger, covering setup, app connection, current adjustment, troubleshooting, and compatibility. Learn how to use your Tera EV charger efficiently and safely.</p>
	<p><a href="#">Tera EV Charger User Guide and FAQ</a></p> <p>Comprehensive guide to the Tera Portable EV Charger, covering operating voltage, charging current adjustment, app connectivity, scheduling, and troubleshooting common faults like 'Lowvolt Fault'. Includes instructions for using the Smart Life app and NEMA adapter cords.</p>
	<p><a href="#">Tera Home EV Charger Level 2 User Manual: Installation and Operation Guide</a></p> <p>Comprehensive user manual for the Tera Home EV Charger Level 2. Covers installation, operation, safety, troubleshooting, and maintenance for electric vehicle charging.</p>
	<p><a href="#">Tera Home EV Charger Level 2 User Manual</a></p> <p>Comprehensive user manual for the Tera Level 2 Home EV Charger, detailing installation, operation, safety guidelines, troubleshooting, and maintenance procedures. Includes product specifications and app integration.</p>
	<p><a href="#">Tera Portable EV Charger P02 User Manual</a></p> <p>User manual for the Tera Portable EV Charger P02, detailing safety precautions, product specifications, operating instructions, fault descriptions, and package contents. Includes information on installation, usage, and troubleshooting.</p>

Tera EV Charger Cable Holder User Manual



[Tera EV Charger Cable Holder User Manual - Installation Guide](#)

Step-by-step installation guide for the Tera EV Charger Cable Holder. Learn how to securely mount your SAE J1772 charger cable organizer on the wall with detailed instructions and required materials.