

OneKey OneKey Classic 1S

OneKey Classic 1S Hardware Crypto Wallet User Manual

Model: OneKey Classic 1S | Brand: OneKey

1. INTRODUCTION

The OneKey Classic 1S is a hardware crypto wallet designed for secure cold storage of digital assets. It features EAL 6+ top security, Bluetooth connectivity, and NFT support. This device allows users to manage a wide range of cryptocurrencies, including Bitcoin, Ethereum, Solana, Dogecoin, BNB, TRON, Bitcoin Cash, and Kaspas, across over 100 chains and 30,000+ coins. It is built with an emphasis on ease of use, security, and broad compatibility across various operating systems and software wallets.

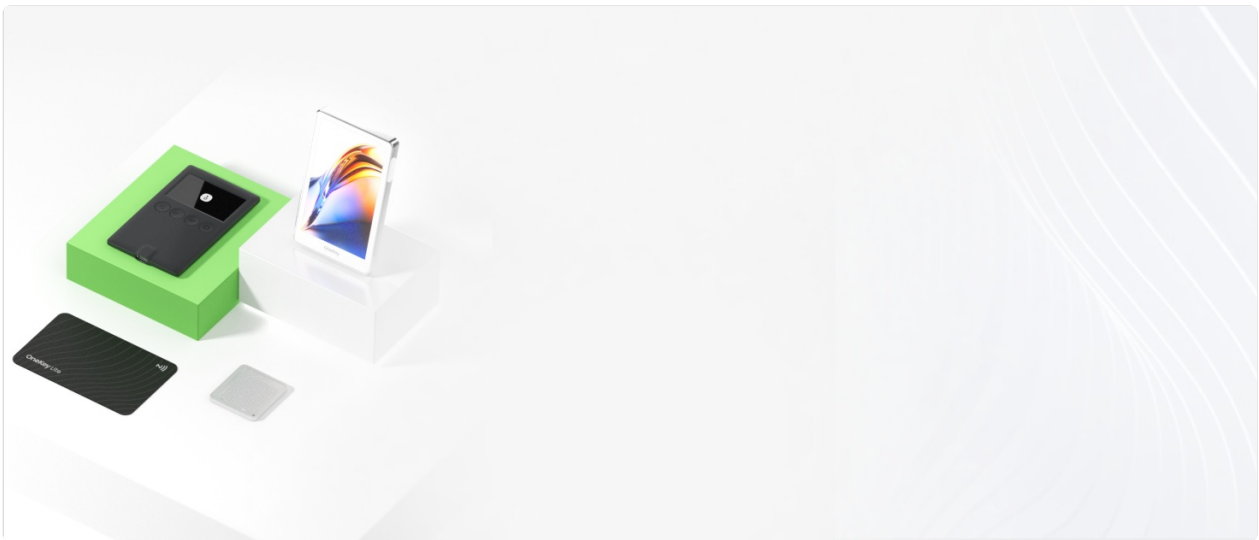


Image: The OneKey Classic 1S, highlighting its compact, card-like design.

2. SETUP

2.1 Unboxing and Initial Inspection

Upon receiving your OneKey Classic 1S, carefully inspect the packaging for any signs of tampering. The device comes with tamper-evident seals and self-destruct labels to ensure its integrity during transit. If any seals appear broken or compromised, do not proceed with setup and contact customer support immediately.

Your web3 homework.

Inside the envelope are 3 recovery sheets for you to hand-copy recovery phrases. Don't forget to complete them.



Image: Contents of the OneKey Classic 1S retail box.



Dear Valued Customer

- Upon receiving your package, please immediately check the product.
- Devices opened after the quality period will not be eligible for after-sales service.

Image: Tamper-evident packaging of the OneKey Classic 1S.

2.2 Package Contents

The standard package includes:

- OneKey Classic 1S Hardware Wallet
- USB Type-C Cable
- Recovery Sheets (x3)

2.3 Initial Device Activation and Recovery Phrase Setup

Follow the on-screen instructions on the OneKey Classic 1S device for initial activation. This process typically involves:

1. Powering on the device.
2. Setting up a PIN for device access.
3. Generating a new recovery phrase (seed phrase).
4. Carefully writing down the recovery phrase on the provided recovery sheets. This phrase is crucial for recovering your assets if the device is lost or damaged. Store it in a secure, offline location.
5. Verifying the recovery phrase as prompted by the device.

Code audits by blockchain experts.

We've engaged blockchain experts like Slowmist to conduct ongoing code audits for OneKey, scanning and checking for security vulnerabilities.

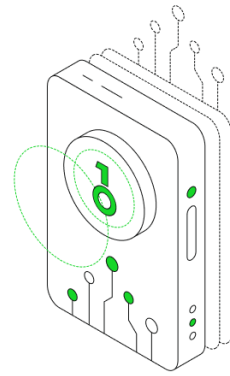


Image: The importance of securely recording your recovery phrase.

The device also features firmware attestation on first activation to ensure authenticity.

3. OPERATING THE ONEKEY CLASSIC 1S

3.1 Connecting the Device

The OneKey Classic 1S supports both wired (USB Type-C) and wireless (Bluetooth) connections. Connect the device to your computer or mobile device using the provided USB cable or pair it via Bluetooth.

Universal Compatibility

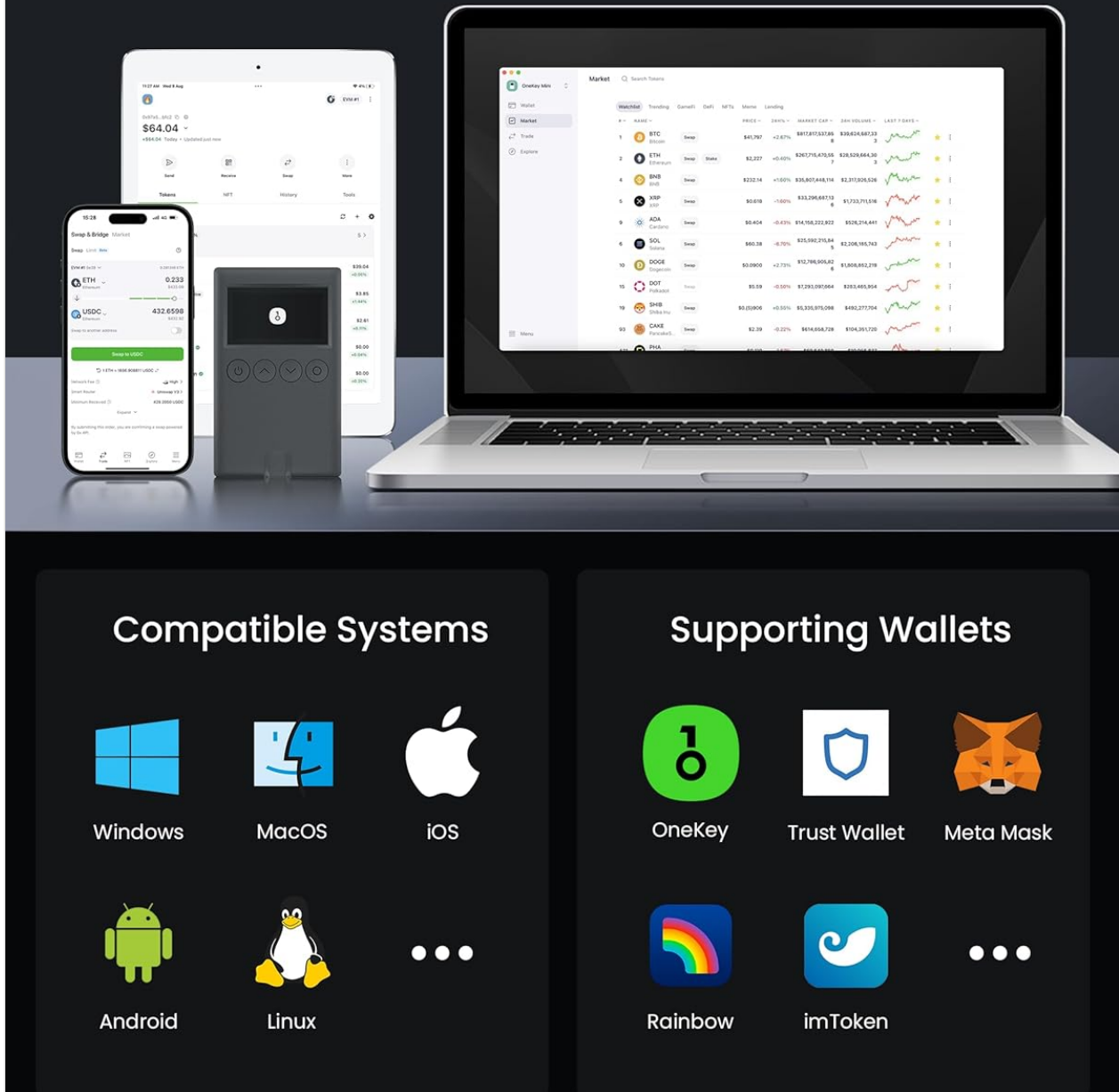


Image: The OneKey Classic 1S demonstrating universal compatibility with various devices.

3.2 User Interface and Navigation

The device features a simple interface with physical buttons for navigation. It supports fingerprint unlock and a 'swipe to sign' mechanism for transactions, designed for ease of use.

Resist from all magic attack.

Protect your keys with secure chips.

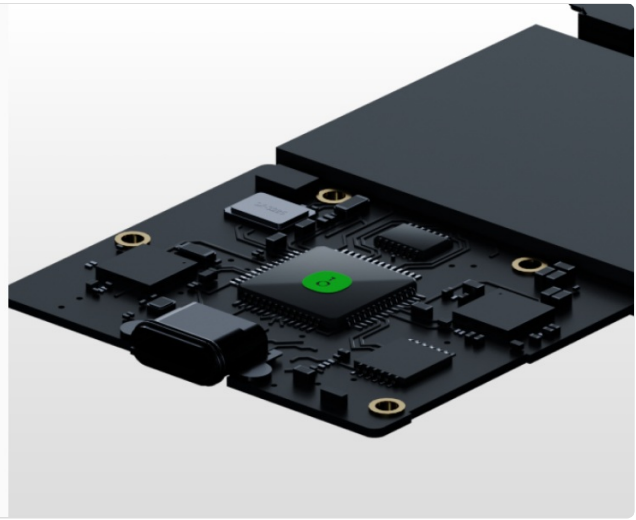


Image: Operating the OneKey Classic 1S with one hand to manage transactions.

3.3 Managing Cryptocurrencies and NFTs

The OneKey Classic 1S supports over 100 blockchain networks and 30,000+ cryptocurrencies, including major assets like BTC, ETH, SOL, USDT, DOGE, BNB, TRON, BCH, and KASPA. It also supports NFTs and DeFi applications.

Support Multi-Chain

70+

Blockchains

1000+

Blockchains



Image: The OneKey Classic 1S supporting multiple blockchain networks.

Seal packaging for peace of mind.

Security seal makes sure that you will be the first to use this hardware wallet, even if there is a customs inspection.

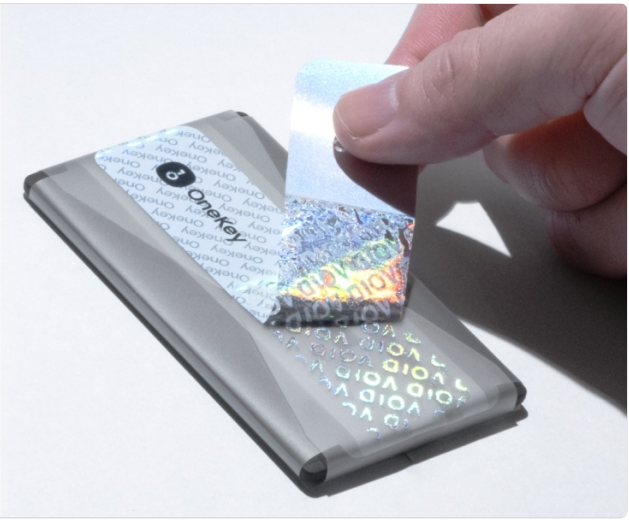


Image: Extensive multi-chain support for various cryptocurrencies.

3.4 Compatibility

The device is compatible with a wide range of operating systems and software wallets:

- **Operating Systems:** Windows, macOS, Linux, Android, iOS
- **Supported Wallets/Protocols:** MetaMask, OKX, Rabby, WalletConnect v2, OneKey App, Trust Wallet, Rainbow, ImToken

Easy to know who's the first to open the box.

With self-destruct labels, it's easy to know if you're the first person to open the box, preventing supply chain attacks.



Image: The OneKey platform interface across various devices and operating systems.

3.5 Security Features

The OneKey Classic 1S incorporates an EAL 6+ certified secure element chip to protect your private keys. It is fully open-source with reproducible builds and has undergone independent security audits.

Dual Security Chips & Open Source



SUPERCHARGED BY
EAL 6+ SECURITY
CHIP

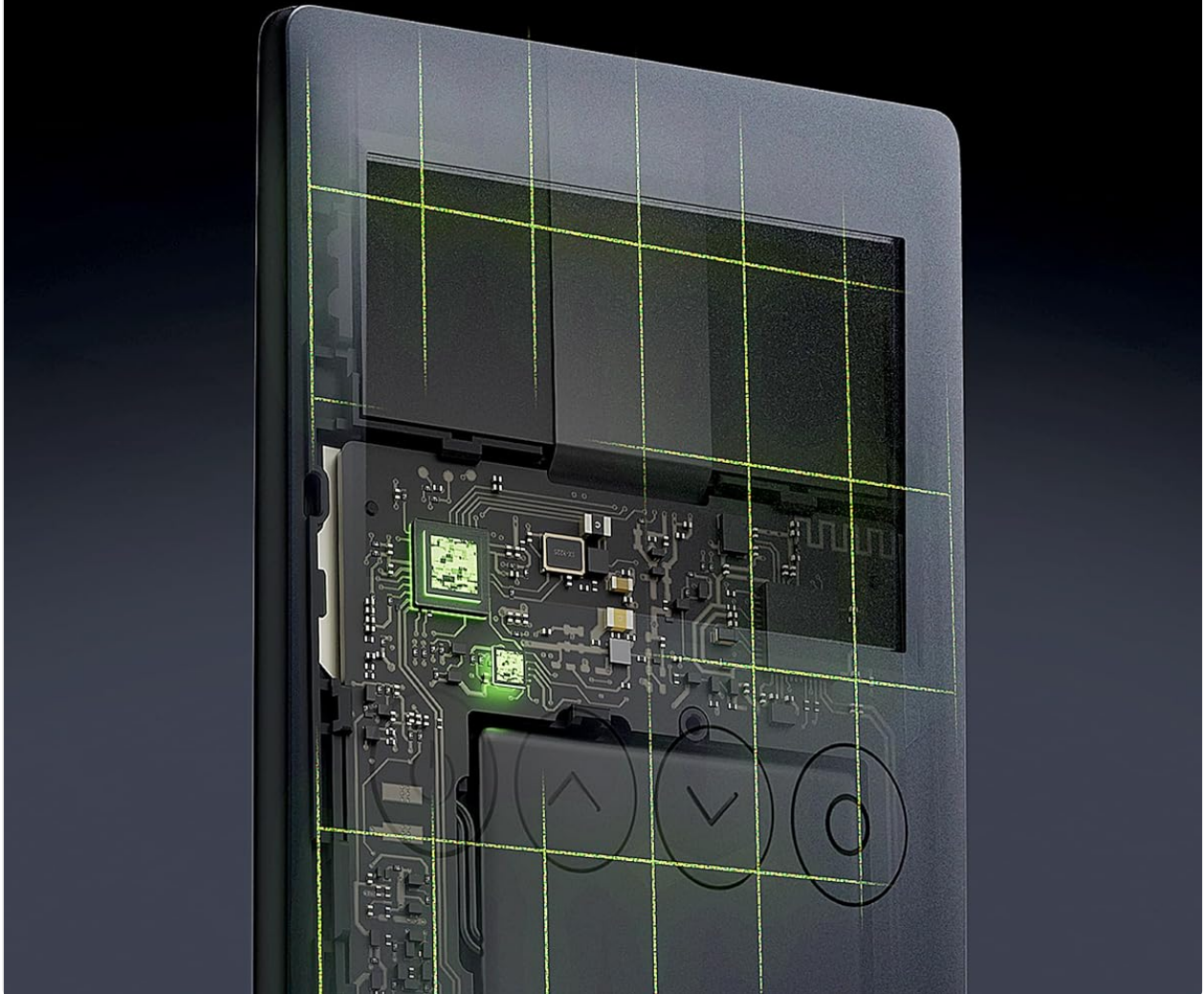
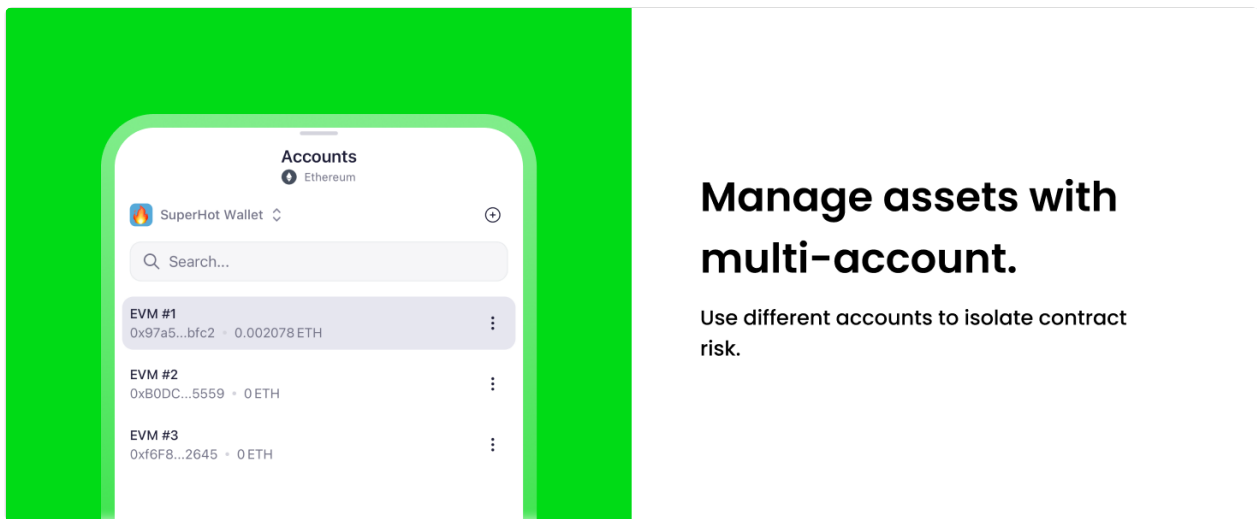


Image: Internal view highlighting the dual security chips and EAL 6+ security.



Manage assets with multi-account.

Use different accounts to isolate contract risk.

Image: Illustration of the secure chip protecting against attacks.

4. MAINTENANCE

4.1 Charging the Device

The OneKey Classic 1S has a built-in rechargeable battery. Connect it to a power source using the provided USB Type-C cable when the battery level is low. A full charge ensures continuous operation without external power.

4.2 General Care

- Keep the device clean and free from dust and moisture.
- Avoid extreme temperatures and direct sunlight.
- Do not attempt to open or modify the device, as this will void the warranty and compromise its security.

4.3 Firmware Updates

Regularly check for and install firmware updates through the official OneKey application. Firmware updates often include security enhancements and new features. Always ensure your device is sufficiently charged before initiating an update.

5. TROUBLESHOOTING

5.1 Device Not Powering On

- Ensure the device is fully charged. Connect it to a power source using the USB Type-C cable and allow it to charge for at least 30 minutes.
- Try a different USB cable or power adapter.

5.2 Connection Issues (USB/Bluetooth)

- **USB:** Ensure the USB cable is securely connected to both the device and your computer. Try a different USB port.
- **Bluetooth:** Ensure Bluetooth is enabled on both your OneKey Classic 1S and the host device (computer/smartphone). Try unpairing and re-pairing the device. Ensure no other devices are interfering with the Bluetooth signal.
- Verify that the OneKey application on your computer or mobile device is up to date.

5.3 Transaction Errors

- Check your internet connection.
- Ensure you have sufficient funds for the transaction, including any network fees.
- Verify the recipient address carefully.
- Confirm the transaction details on the device screen before approving.

5.4 Forgotten PIN or Lost Recovery Phrase

- If you forget your PIN, you may need to reset the device. This will require your recovery phrase to restore your assets.
- **WARNING:** If you lose your recovery phrase and your device is inaccessible (e.g., forgotten PIN, damaged), your assets will be permanently lost. The recovery phrase is the sole backup for your digital assets.

6. SPECIFICATIONS

Feature	Detail
Model Name	OneKey Classic 1S
Color	Black-Classic
Security Chip	EAL 6+ Certified Secure Element
Connectivity	USB Type-C, Bluetooth
Supported Assets	100+ Chains, 30,000+ Coins (BTC, ETH, SOL, DOGE, BNB, TRON, BCH, KASPA, NFTs, DeFi)
Compatibility	Windows, macOS, Linux, Android, iOS (via OneKey App, MetaMask, OKX, Rabby, WalletConnect v2)
Dimensions	7.24 x 3.35 x 1.61 inches (Package)
Item Weight	7 ounces
Battery	1 Nonstandard Battery (Rechargeable)
Flash Memory Type	SD (Note: This refers to internal secure element storage, not user-accessible storage)
Memory Storage Capacity	1 MB (Internal secure element storage)
Read/Write Speed	400 MB/s (Relevant for internal data transfer, not user-accessible storage)
Special Feature	Lightweight, Open Source

7. WARRANTY AND SUPPORT

For detailed information regarding the product warranty, technical support, and customer service, please refer to the official OneKey website or contact OneKey customer support directly. Specific warranty terms and conditions may vary by region and purchase location.

