

Discovery 1016875

Discovery 3D Human Anatomy Biology Model Kit

Model: 1016875

INTRODUCTION

The Discovery 3D Human Anatomy Biology Model Kit offers an interactive and educational experience for exploring the human body. This 28-piece model allows users to assemble and disassemble various anatomical structures, including the skeletal, muscular, and organ systems. Designed for ages 8 and up, this kit provides a hands-on approach to understanding biology and physiology. Some components of the skeletal system also feature a glow-in-the-dark effect for enhanced visual learning.

WHAT'S IN THE BOX

Carefully unbox all components and verify that all 28 pieces are present. The kit includes:

- **Organ System (14 pieces):** 1 Heart, 2 Lungs, 1 Pancreas, 1 Spleen, 1 Pair of Kidneys, 1 Intestine, 1 Stomach, 1 Diaphragm, 2 Vein Segments, 1 Liver, 1 Brain
- **Skeletal System:** 8 Bone Groups (glow-in-the-dark)
- **Muscular System:** 3 Muscle Groups
- **Additional Components:** 2 Outer Shells, 1 Pair of Forceps (tweezers), 1 Base

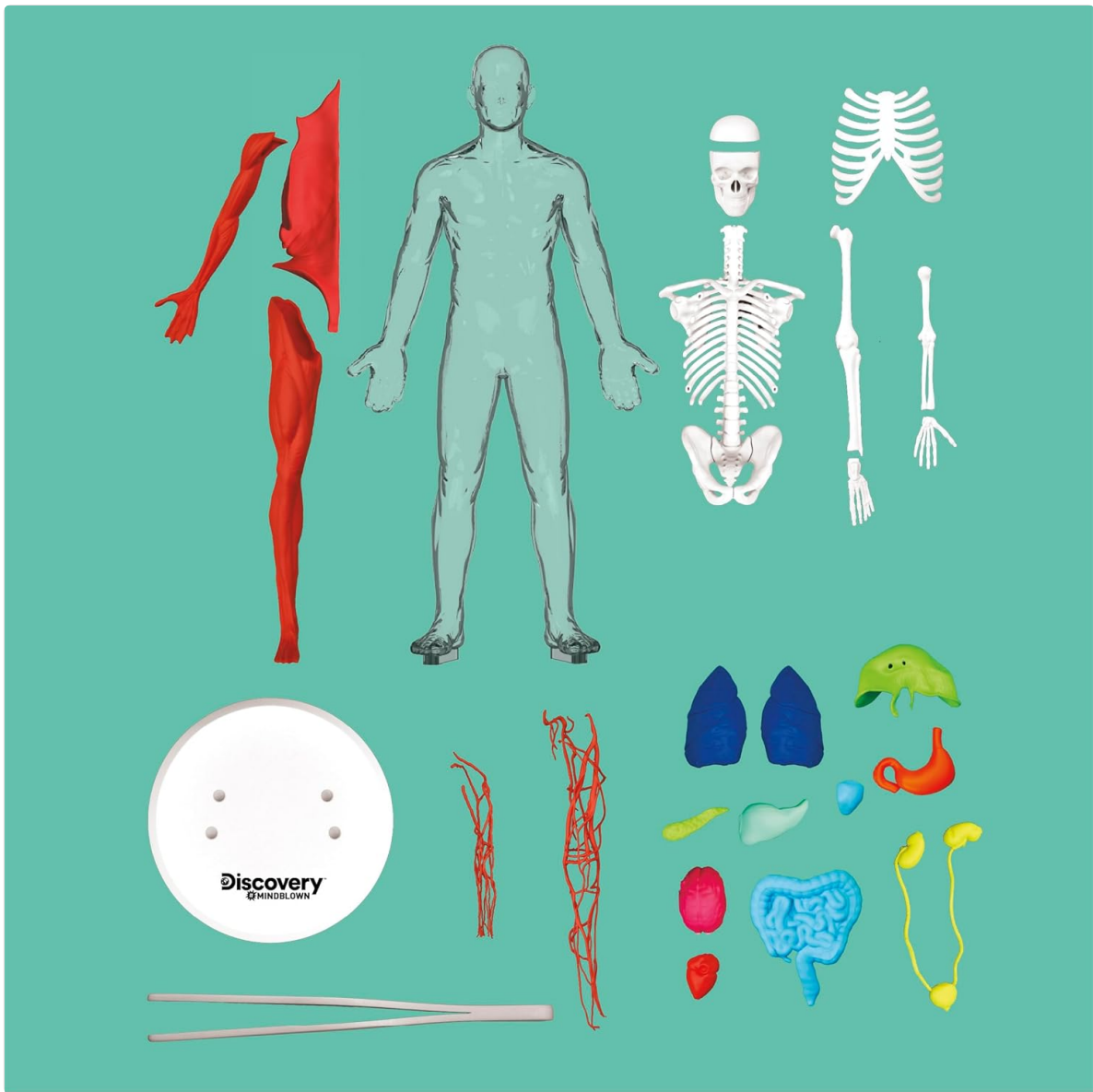


Image: All components of the 28-piece human anatomy model kit.

ASSEMBLY INSTRUCTIONS

Follow these steps to assemble your 3D Human Anatomy Model:

1. **Prepare the Base:** Place the main torso shell onto the provided base. Ensure it is stable.
2. **Insert Skeletal Components:** Begin by placing the glow-in-the-dark bone groups into their respective positions within the torso. Refer to the included guide for accurate placement.
3. **Add Organ Systems:** Using the provided forceps, carefully insert each organ into its correct anatomical location. The organs are designed to fit securely.
4. **Attach Muscular System:** Position the three muscle groups over the skeletal and organ structures as indicated in the guide.
5. **Close the Model:** Once all internal components are in place, attach the second outer shell to complete the human body model.



Image: Assembled model demonstrating the glow-in-the-dark feature and use of forceps.

**EXPLORE
THE COMPLEX
HUMAN BODY**



Image: Detailed view of placing an organ with forceps.

OPERATING INSTRUCTIONS

This model is designed for repeated assembly and disassembly to facilitate learning. Use the forceps to carefully remove and replace organs and skeletal pieces. This allows for detailed examination of each part and understanding their relative positions within the human body.

Glow-in-the-Dark Feature

To activate the glow-in-the-dark effect of the skeletal pieces, expose them to a bright light source for a few hours. This will charge the material, allowing the bones to glow in a darkened environment. The intensity and duration of the glow will depend on the exposure time to light.

Your browser does not support the video tag.

Video: Overview of the Discovery 3D Human Anatomy Model Kit, demonstrating its features and assembly process.

MAINTENANCE

To ensure the longevity of your Discovery 3D Human Anatomy Model Kit, follow these maintenance guidelines:

- **Cleaning:** Wipe the model and its components with a soft, damp cloth. Avoid using harsh chemicals or abrasive cleaners, as these may damage the plastic or the glow-in-the-dark properties.
- **Storage:** Store all 28 pieces safely in their original packaging or a designated container to prevent loss of small parts. Keep the kit away from direct sunlight and extreme temperatures to preserve material integrity.

TROUBLESHOOTING

Difficulty Assembling Pieces

If you encounter difficulty fitting certain pieces, particularly the organs or muscular system components, ensure they are correctly aligned with their corresponding slots. Some parts, such as the vein segments, may require careful positioning. Apply gentle, even pressure rather than force. If a piece does not fit, re-examine the assembly guide to confirm the correct orientation and location.

SPECIFICATIONS

Feature	Detail
Product Dimensions	3.13 x 9.5 x 13.53 inches
Item Weight	1.21 pounds
Item Model Number	1016875
Manufacturer Recommended Age	8 years and up
Number of Pieces	28
Special Features	Glow-in-the-Dark Skeletal Pieces

SAFETY INFORMATION

WARNING: CHOKING HAZARD - Small Parts.

This product contains small parts and is not suitable for children under 3 years of age. Adult supervision is recommended for children aged 8 and up during assembly and play to ensure all pieces are handled appropriately and to prevent accidental ingestion.

WARRANTY AND SUPPORT

For any questions, concerns, or support regarding your Discovery 3D Human Anatomy Biology Model Kit, please contact the manufacturer, Merchsource. Specific warranty details may be available through the retailer or on the product packaging.

