

Niagara WP-EL0621

Niagara Hydrotech Non-Electric Bidet Seat User Manual

Model: WP-EL0621

[Overview](#) [Installation](#) [Introduction](#) [Operation](#) [Safety Information](#) [Maintenance](#) [Package Contents](#) [Troubleshooting](#) [Product](#) [Specifications](#) [Warranty & Support](#)

1. INTRODUCTION

Thank you for choosing the Niagara Hydrotech Non-Electric Bidet Seat. This manual provides detailed instructions for the safe installation, operation, and maintenance of your new bidet seat. Please read this manual thoroughly before installation and retain it for future reference.

This bidet seat is designed to provide a hygienic and comfortable cleansing experience without requiring electricity. It features dual wash nozzles for front and rear cleansing, adjustable water pressure, and a soft-close seat for quiet operation.

2. SAFETY INFORMATION

- **Water Supply:** Ensure the water supply to the toilet is turned off before beginning installation.
- **Water Pressure:** Do not connect the bidet seat to a hot water supply. This unit is designed for cold water connection only.
- **Installation:** Follow all installation steps carefully. If you are unsure about any step, consult a qualified plumber.
- **Cleaning:** Use mild, non-abrasive cleaners. Avoid harsh chemicals that may damage the product finish or internal components.
- **Children:** Supervise children to ensure they do not play with the appliance.

3. PACKAGE CONTENTS

Verify that all components are present before beginning installation.



LID SIZE⁺
ELONGATED FOR COMFORT



SOFT CLOSE

Image: All components included in the Niagara Hydrotech Bidet Seat package, including the bidet seat, mounting plate, T-adapter, water supply hose, and mounting hardware.

- Niagara Hydrotech Bidet Seat (Elongated)
- Mounting Plate
- Mounting Bolts and Washers
- T-Adapter (7/8" x 7/8" x 1/2")
- Braided Metal Water Supply Hose (1/2" x 1/2")
- Installation Manual

4. PRODUCT OVERVIEW

Familiarize yourself with the different parts of your bidet seat.



Image: Top-down view of the Niagara Hydrotech Bidet Seat with the lid open, revealing the dual retractable nozzles.

1. **Control Knob:** Located on the right side, used to select wash mode and adjust water pressure.
2. **Dual Nozzles:** Retractable nozzles for front and rear wash.
3. **Quick Release Button:** Allows for easy removal of the seat for cleaning.
4. **Water Inlet:** Connection point for the water supply hose.
5. **Soft-Close Lid and Seat:** Prevents slamming and reduces noise.

5. INSTALLATION GUIDE

This bidet seat is designed for easy DIY installation. No special tools are required beyond a wrench for tightening connections.

5.1 Pre-Installation Checks

- Ensure your toilet bowl is an **elongated** type. This bidet seat is not compatible with round toilet bowls.



Image: Diagram illustrating the difference between round and elongated toilet bowls, indicating compatibility with elongated bowls.

- Locate the toilet's water supply valve and turn it off. Flush the toilet to drain the tank.
- Place a towel or small bucket under the toilet tank to catch any residual water.

5.2 Removing Your Existing Toilet Seat

1. Lift the hinge covers at the back of your current toilet seat.
2. Unscrew the bolts holding the seat to the toilet bowl. You may need a screwdriver or wrench.
3. Remove the old toilet seat and clean the area thoroughly.

5.3 Installing the Bidet Seat

1. Place the mounting plate over the bolt holes on the toilet bowl. Adjust its position to align with the holes.
2. Insert the mounting bolts through the mounting plate and toilet bowl holes.
3. Secure the bolts from underneath the toilet bowl using the washers and nuts. Do not overtighten yet, allowing for

minor adjustments.

4. Slide the Niagara Hydrotech Bidet Seat onto the mounting plate until it clicks into place.



Image: The Niagara Hydrotech Bidet Seat fully installed on a toilet, showing the water connection hose.

5. Adjust the seat's position for a comfortable fit, then fully tighten the mounting bolts.

5.4 Connecting the Water Supply

1. Disconnect the existing water supply hose from the toilet tank's fill valve.
2. Install the T-adapter onto the toilet tank's fill valve. Ensure the rubber washer is properly seated to prevent leaks.
3. Reconnect the original toilet water supply hose to the top of the T-adapter.
4. Connect one end of the provided braided metal water supply hose to the side of the T-adapter.
5. Connect the other end of the braided metal water supply hose to the water inlet on the bidet seat.
6. Slowly turn on the toilet's water supply valve. Check for any leaks at all connection points. Tighten connections gently if leaks are observed.

6. OPERATION

The Niagara Hydrotech Bidet Seat is simple to operate using the control knob located on the right side.



Image: A close-up view of the control knob on the side of the bidet seat, used for adjusting water pressure and selecting wash modes.

6.1 Wash Options



ADJUSTABLE

WATER PRESSURE WITH
AN EASY TO USE DIAL



WATER PRESSURE YOUR WAY

Image: Detail of the dual nozzles, illustrating their function for both front and rear cleansing.

- **Rear Wash:** Turn the control knob towards the "Rear" icon. The rear nozzle will extend and spray water.
- **Front Wash:** Turn the control knob towards the "Front" icon. The front nozzle will extend and spray water.

6.2 Adjusting Water Pressure

- While a wash option is selected, continue to rotate the control knob further in the chosen direction to increase water pressure.
- Rotate the knob back towards the center to decrease water pressure.
- To stop the wash, return the control knob to the central "Off" position. The nozzles will retract automatically.

7. MAINTENANCE AND CLEANING

Regular cleaning ensures optimal performance and hygiene of your bidet seat.

7.1 Routine Cleaning (Quick Release)



Image: A close-up of the quick release button located on the side of the bidet seat, designed for easy removal for cleaning.

1. Press the Quick Release button located on the side of the bidet seat.
2. Slide the bidet seat forward and lift it off the mounting plate.
3. Clean the bidet seat and the toilet bowl area with a mild, non-abrasive cleaner and a soft cloth.
4. Realign the bidet seat with the mounting plate and slide it back until it clicks into place.

7.2 Nozzle Cleaning

- The nozzles are self-cleaning and retract behind a gate after each use.
- For deeper cleaning, gently pull out the nozzles manually and wipe them with a soft cloth and mild soap. Do not use harsh chemicals or abrasive materials.
- Ensure the nozzles retract fully after cleaning.

8. TROUBLESHOOTING

Problem	Possible Cause	Solution
No water spray or weak spray	<ul style="list-style-type: none">• Water supply valve is closed.• T-adapter or hose connections are loose.• Nozzles are clogged.	<ul style="list-style-type: none">• Open the toilet's water supply valve fully.• Check and tighten all water connections.• Clean the nozzles as described in Section 7.2.
Water leakage	<ul style="list-style-type: none">• Loose connections.• Missing or improperly seated washers.	<ul style="list-style-type: none">• Turn off water supply. Tighten all connections gently.• Ensure all washers are correctly installed. Replace if damaged.

Problem	Possible Cause	Solution
Nozzles do not retract	<ul style="list-style-type: none">Control knob not in "Off" position.Debris obstructing nozzle movement.	<ul style="list-style-type: none">Ensure the control knob is centered in the "Off" position.Clean around the nozzles and nozzle gate.
Seat is loose	<ul style="list-style-type: none">Mounting bolts are loose.Seat not properly clicked onto mounting plate.	<ul style="list-style-type: none">Tighten the mounting bolts from underneath the toilet bowl.Remove and re-attach the seat to the mounting plate, ensuring it clicks securely.

9. SPECIFICATIONS

- **Model:** WP-EL0621
- **Type:** Non-Electric Bidet Seat
- **Compatibility:** Elongated Toilet Bowls
- **Material:** Plastic
- **Color:** White
- **Product Dimensions:** 18.63"L x 15.25"W
- **Item Weight:** 6.36 Pounds
- **Water Connection:** Cold Water Only
- **UPC:** 732291500012
- **Manufacturer:** Niagara


10. WARRANTY & SUPPORT

Niagara products are manufactured to high-quality standards. For warranty information or technical support, please contact Niagara customer service.

- **Customer Service:** Refer to the contact information provided on the product packaging or the official Niagara website.
- **Online Resources:** Visit the [Niagara Store on Amazon](#) for additional product information and support.

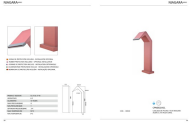



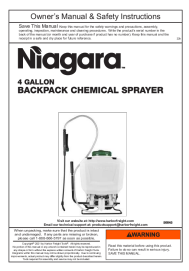


Related Documents - WP-EL0621

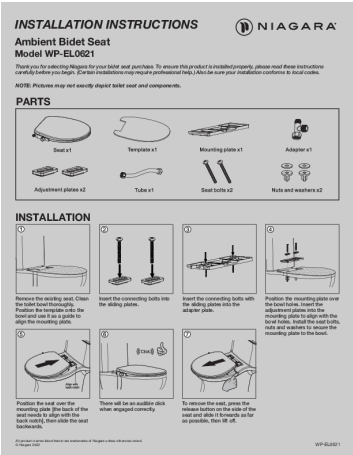


[Niagara The Original 0.5/0.95 GPF Dual Flush Toilet - Round Bowl, 12" Rough-In](#)

Discover the Niagara The Original dual flush toilet, featuring a water-saving 0.5/0.95 GPF system, a smooth ceramic surface, and ADA height compliance. This round bowl toilet with a 12-inch rough-in offers quiet, powerful flushing and reliable performance.

	<p>Niagara CPN002/ACL Pool Waterfall - Stainless Steel 316 Rosa Coral</p> <p>Discover the Niagara CPN002/ACL, a 15cm stainless steel 316 pool waterfall in Rosa Coral finish. This product overview includes technical specifications, dimensions, and features.</p>
	<p>Niagara Series CPN002/ANG Pool Waterfall - Technical Specifications</p> <p>Detailed technical specifications for the Niagara Series CPN002/ANG pool waterfall, featuring S.316 stainless steel construction in a matte black finish. Includes product dimensions, weight, guarantee, pressure ratings, and temperature limits.</p>
	<p>Niagara 4 Framework Supported Operating Systems Installation Guide</p> <p>Comprehensive guide detailing the supported operating systems for the Niagara 4 Framework, version 4.4 through 4.13, essential for installation and compatibility.</p>
	<p>Niagara OPC UA Driver Guide: Industrial Automation Connectivity & Data Exchange</p> <p>Learn how to integrate industrial automation systems with the Niagara OPC UA Driver. This guide from Tridium provides detailed instructions for Systems Integrators on configuring OPC UA Servers and Clients, managing data points, alarms, and histories for seamless connectivity and data exchange.</p>
	<p>Niagara 4 Gallon Backpack Chemical Sprayer Owner's Manual and Safety Instructions</p> <p>Comprehensive owner's manual and safety instructions for the Niagara 4 Gallon Backpack Chemical Sprayer. Covers assembly, operation, maintenance, troubleshooting, and warranty information.</p>

Documents - Niagara – WP-EL0621

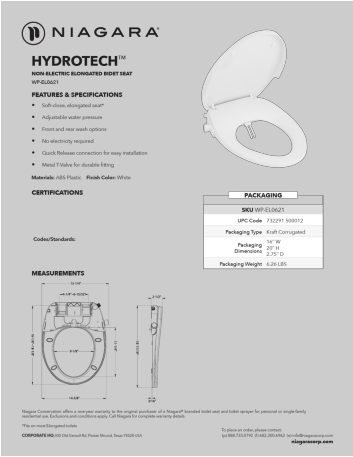


[\[pdf\]](#) User Manual Installation Guide Instructions Guide

Niagara installation instruction for WP EL0621 10 26 22 3473328 wpel 0621 manual final Elongated Toilet Seat Bidet hiag1044 WPEL0621Niagara WPEL0621secure img1 ag wfcdn dm document 3028f7c6 b91c 4fdd a4f5 62eb2a200851 |||

INSTALLATION INSTRUCTIONS Ambient Bidet Seat Model **WP-EL0621** Thank you for selecting Niagara for your bidet seat purchase. To ensure this product is installed properly, please read these instructions carefully before you begin. Certain installations may require professional help. Also be sure your...

lang:en score:57 filesize: 1.65 M page_count: 4 document date: 2022-10-26



[pdf] Specifications Dimension Guide Guide Warranty

Niagara WP EL0621 Dimensions Guide Hydrotech Elongated Ambient Bidet Seat 732291500012

65223327 lowes productdocuments 30092f03 18d1 45b9 89b3 9261fbd67fd5 |||

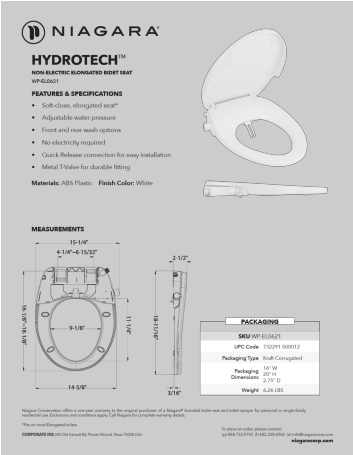
HYDROTECHTM NON-ELECTRIC ELONGATED BIDET SEAT **WP-EL0621**

FEATURES SPECIFICATIONS Soft-close, elongated seat* Adjustable water pressure

Front and rear wash options No electricity required Quick Release connection for easy

installation Metal T-Valve for durable fitting Materials: ABS Plastic Fi...

lang:en score:53 filesize: 307.25 K page_count: 1 document date: 2023-09-01



[pdf] Specifications Dimension Guide Warranty

3473328 specsheet hydrotech non electric wp el0621 final Elongated Toilet Seat Bidet Niagara hiag1044

WPEL0621Niagara WPEL0621secure img1 ag wfcnd dm document 21e088bc b971 46b6 aa84

7d4d931ae3e9 |||

HYDROTECHTM NON-ELECTRIC ELONGATED BIDET SEAT **WP-EL0621**

FEATURES SPECIFICATIONS Soft-close, elongated seat* Adjustable water pressure

Front and rear wash options No electricity required Quick Release connection for easy

installation Metal T-Valve for durable fitting Materials: ABS Plastic Fi...

lang:en score:38 filesize: 353.99 K page_count: 1 document date: 2023-07-06