

Libratone AIR+ 3

Libratone AIR+ 3 True Wireless In-Ear Headphones User Manual

Model: AIR+ 3 (LTW610) | Brand: Libratone

1. INTRODUCTION

Thank you for choosing the Libratone AIR+ 3 True Wireless In-Ear Headphones. This manual provides essential information for setting up, operating, and maintaining your device. Please read it carefully before use to ensure optimal performance and longevity of your headphones.

2. PACKAGE CONTENTS

Verify that all items are present in your package:

- Libratone AIR+ 3 True Wireless In-Ear Headphones (Left and Right earbuds)
- Wireless Charging Case
- USB Charging Cable
- Multiple Sizes of Eartips (S, M, L)
- User Manual (this document)

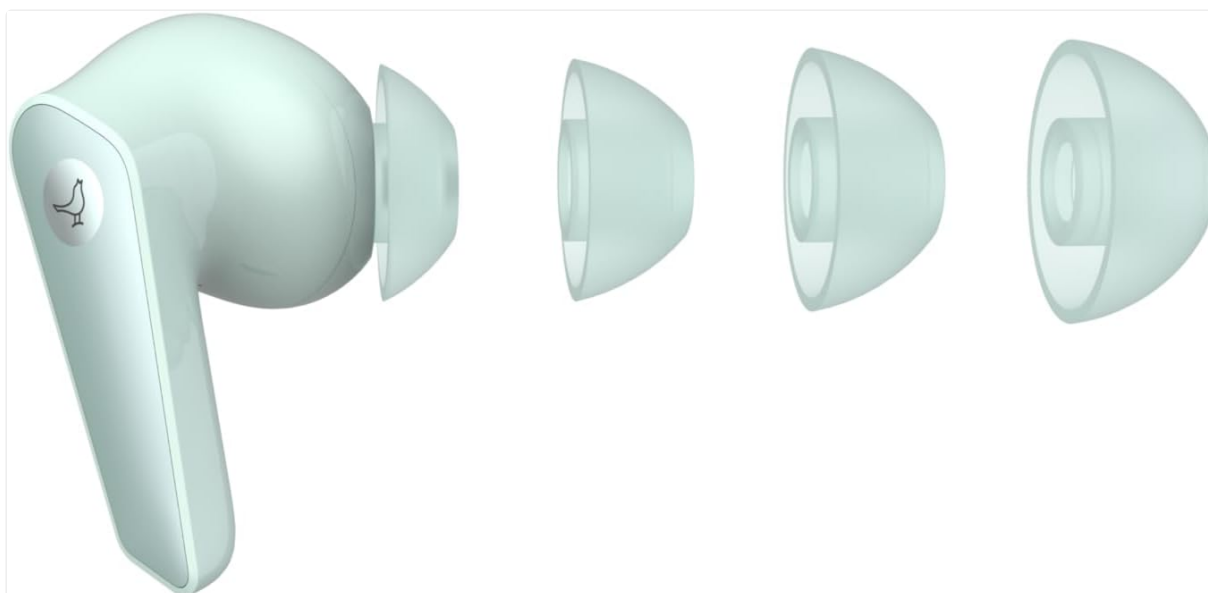


Image: One Libratone AIR+ 3 earbud shown alongside three different sizes of silicone eartips, illustrating the customizable

fit options.

3. PRODUCT OVERVIEW

Familiarize yourself with the components of your Libratone AIR+ 3 headphones.



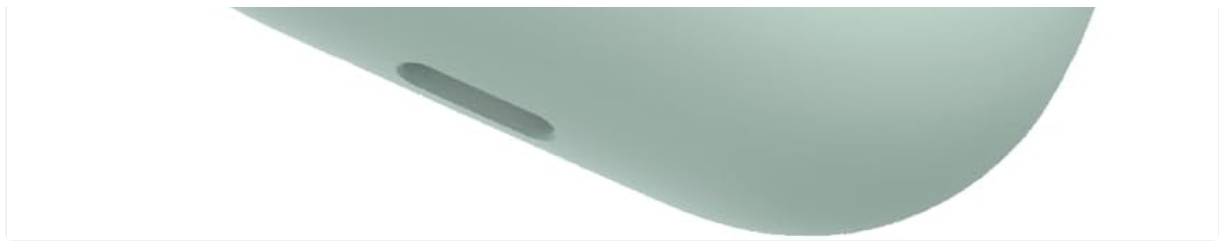


Image: The Libratone AIR+ 3 True Wireless Earbuds (Green) are displayed alongside their matching wireless charging case. The earbuds feature a sleek, triangular stem design.

Earbud Components:

- **Touch Control Area:** For playback, call management, and ANC modes.
- **Microphone:** For calls and voice commands.
- **Eartip:** Ensures a secure and comfortable fit, and optimal sound isolation.
- **Charging Contacts:** Located on the stem, for charging within the case.

Charging Case Components:

- **Earbud Slots:** Securely holds and charges the earbuds.
- **Charging Indicator Light:** Displays charging status and battery level.
- **USB-C Port:** For wired charging of the case.
- **Wireless Charging Coil:** For wireless charging of the case.

4. SETUP

4.1 Charging the Headphones and Case

Before first use, fully charge both the earbuds and the charging case.

1. **Charging the Earbuds:** Place the earbuds into the charging case. Ensure the charging contacts align. The indicator light on the case will show charging status.
2. **Charging the Case (Wired):** Connect the USB charging cable to the USB-C port on the case and to a power source.
3. **Charging the Case (Wireless):** Place the charging case on a compatible wireless charging pad.

A full charge takes approximately 1.5 hours. The earbuds provide up to 6 hours of playback, and the charging case provides an additional 3 full charges, totaling up to 24 hours of battery life.



Image: The Libratone AIR+ 3 earbuds are shown inside their open charging case, illustrating how they are seated for charging.

4.2 Bluetooth Pairing

To connect your Libratone AIR+ 3 headphones to a device:

1. Open the charging case. The earbuds will automatically enter pairing mode, indicated by a flashing light.
2. On your device (smartphone, tablet, computer), go to Bluetooth settings.
3. Select "Libratone AIR+ 3" from the list of available devices.
4. Once connected, the indicator light on the case will turn solid.

The headphones support Bluetooth 5.3 for stable and efficient wireless communication.

4.3 Libratone App Installation

For enhanced control and customization, download the official Libratone app from your device's app store. The app allows you to:

- Adjust Active Noise Cancellation (ANC) levels.
- Customize touch controls.
- Update firmware.
- Access equalizer settings.

5. OPERATING INSTRUCTIONS

5.1 Power On/Off

- **Power On:** Open the charging case, or take the earbuds out of the case. They will power on automatically.
- **Power Off:** Place the earbuds back into the charging case and close the lid. They will power off

automatically.

5.2 Music Playback and Call Management

The earbuds feature intuitive touch controls. Specific functions can be customized via the Libratone app.

Action	Function
Single Tap (Left/Right)	Play/Pause Music, Answer Call
Double Tap (Right)	Next Track
Double Tap (Left)	Previous Track
Triple Tap (Left/Right)	Activate Voice Assistant
Long Press (Left/Right)	Switch ANC Modes, End/Reject Call

5.3 Active Noise Cancellation (ANC) and Transparency Mode

The Libratone AIR+ 3 features advanced Active Noise Cancellation, offering a 3x improvement over previous models. Use the touch controls or the Libratone app to switch between modes:

- **ANC On:** Reduces ambient noise for an immersive listening experience.
- **Transparency Mode:** Allows you to hear your surroundings while still enjoying your audio.
- **ANC Off:** Standard audio playback without noise cancellation.

Umgebungsgeräusche werden weitgehend ausgeblendet

Modernste Technologie zur aktiven
Geräuschunterdrückung sorgt für ein
nie dagewesenes Hörerlebnis



Image: A single Libratone AIR+ 3 earbud is depicted with sound wave graphics, emphasizing its 3x improved active noise cancellation capability.

5.4 Multi-Device Switching

The AIR+ 3 can connect to up to 5 devices simultaneously. To switch between connected devices, use the Libratone app or the designated touch control (if customized). Each connected device is assigned a unique color indicator light for easy identification.

6. MAINTENANCE

6.1 Cleaning

- Regularly clean the earbuds and charging case with a soft, dry, lint-free cloth.
- Remove eartips and clean them with mild soap and water, then dry thoroughly before reattaching.
- Ensure charging contacts on both earbuds and case are free from dust and debris.

6.2 Storage

When not in use, store the earbuds in their charging case to protect them and keep them charged. Avoid extreme temperatures and humidity.

The earbuds are IP54 rated for dust and water resistance, making them suitable for various conditions, but they are not waterproof and should not be submerged.

7. TROUBLESHOOTING

- **No Sound:**
 - Ensure earbuds are charged.
 - Check Bluetooth connection on your device.
 - Adjust volume on both earbuds and connected device.
- **Earbuds Not Pairing:**
 - Place earbuds back in the case, close the lid, wait 5 seconds, then open again to re-enter pairing mode.
 - Forget "Libratone AIR+ 3" from your device's Bluetooth settings and try pairing again.
- **Poor Call Quality:**
 - Ensure microphones are clean and unobstructed.
 - Move closer to your connected device.
 - Avoid noisy environments if possible.
- **Charging Issues:**
 - Check charging cable and power source.
 - Ensure earbuds are correctly seated in the case.
 - Clean charging contacts on earbuds and case.

8. SPECIFICATIONS

Feature	Detail
Model Name	Libratone AIR+ 3 (LTW610)
Noise Control	Active Noise Cancellation (3x improved)
Audio Driver	11mm Dynamic Drivers
Connectivity	Bluetooth 5.3
Battery Life (Earbuds)	Up to 6 hours
Total Battery Life (with Case)	Up to 24 hours
Charging Time	Approx. 1.5 hours
Water Resistance	IP54 Rated (Dust and Water Resistant)
Weight	52 Grams (total)
Dimensions	2.17 x 0.84 x 1.95 inches
Control Type	App, Touch, Button
Material	Metal, Plastic, Silicone

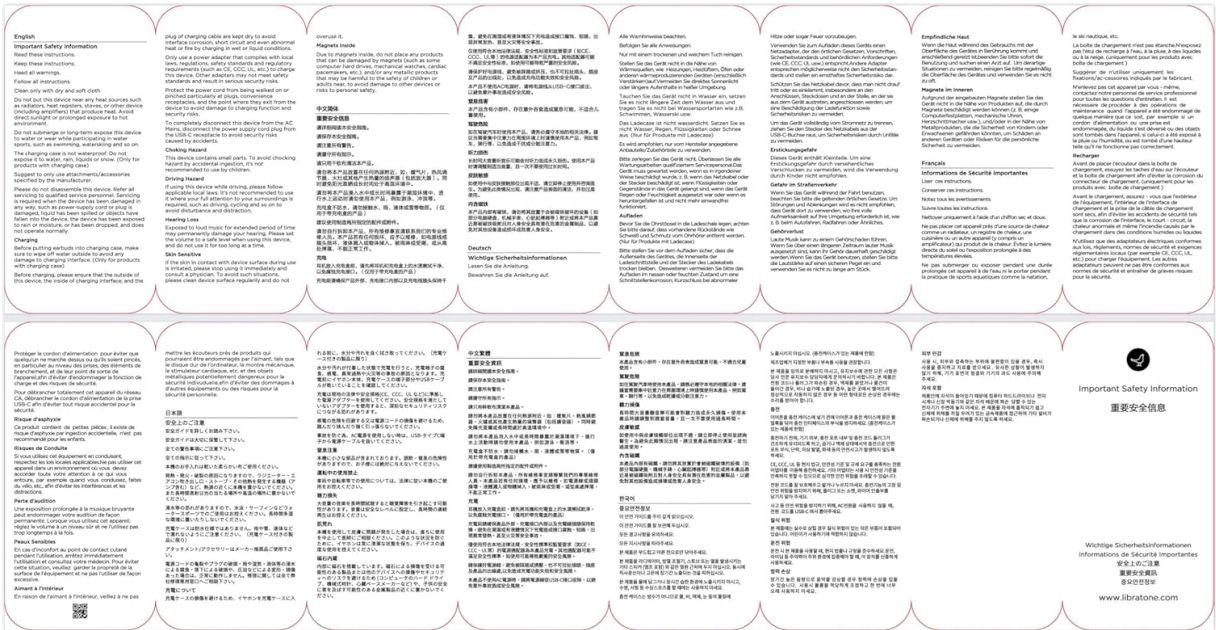


Image: The back of the Libratone AIR+ 3 product packaging, displaying key features, specifications, and regulatory compliance information.

9. SAFETY INFORMATION

Please refer to the included safety leaflet or the full digital manual on the Libratone website (www.libratone.com) for comprehensive safety guidelines, including information on battery handling, disposal, and regulatory compliance (FCC, CE, etc.).

Important: Do not attempt to disassemble or modify the product. Avoid exposing the device to extreme temperatures, direct sunlight, or liquids beyond its IP54 rating.

10. WARRANTY AND SUPPORT

Libratone products are covered by a limited warranty. For detailed warranty terms and conditions, or for technical support, please visit the official Libratone website or contact their customer service. Keep your proof of purchase for warranty claims.

Website: www.libratone.com